

WAKE TECHNICAL COMMUNITY COLLEGE 2006 FACT BOOK

TABLE OF CONTENTS

Policy Statement	1
Purpose of this FACT BOOK.....	2
Mission Statement	3
Glossary	6
The College	11
Service Area: Wake County	31
Students.....	33
Continuing Education.....	49
Employees.....	56
Facilities	60
Comparisons	70

POLICY STATEMENT

AFFIRMATIVE ACTION/EQUAL OPPORTUNITY

Wake Technical Community College offers Equal Employment and Educational Opportunities to all employees, students, prospective employees, and prospective students.

Affirmative Action, Equal Educational Opportunities, and Compliance with the Americans With Disabilities Act are viewed by the Board of Trustees as an integral part of the mission and purpose of Wake Technical Community College.

Questions concerning this policy should be addressed to:

STUDENT MATTERS:

Dean of Students
Wake Technical Community College
9101 Fayetteville Road
Raleigh, NC 27603-5696

EMPLOYEE MATTERS:

Director of Human Resources
Wake Technical Community College
9101 Fayetteville Road
Raleigh, NC 27603-5696

Individuals with disabilities who need assistance or require special accommodations to access College activities should request such services in advance by calling Disability Support Services at (919) 662-3405 or (919) 779-0668 (TDD).

PURPOSE OF THIS FACT BOOK

This **Fact Book** is designed to provide the public whom we serve, college administrators, planners, and other selected individuals such as trustees, local commissioners, legislators, and key college friends with an easily readable compilation of data about the College. While some historical information is included, the data and facts provide a profile of the College for one year. Accumulations of data, such as data for the last five years, are included as appropriate to illustrate change or percent of change.

This book has been compiled by the College's Office of Institutional Effectiveness and Research under the direction of Dr. John B. Boone, Associate Vice President of Institutional Effectiveness and Research.

Every effort has been made to make the **FACT BOOK** as error-free as possible. However, it will be greatly appreciated if typographical errors, incorrect data, and suggestions for improving the **FACT BOOK** are forwarded to the Office of Institutional Effectiveness and Research, Room 128, Holding Hall. Ms. Tammy Stephenson may be reached at 662-3451 and Dr. John Boone at 662-3454.

MISSION STATEMENT

The mission of Wake Technical Community College is to help improve and enrich lives by meeting the lifelong educational, training, and service needs of its diverse community. The College is committed to promoting individual success in the workplace and higher education and to promoting cultural, social, and economic development.

In pursuit of its mission, this public two-year comprehensive postsecondary educational institution adheres to an open-door policy by offering quality accessible and affordable educational opportunities to all adults regardless of age, sex, socioeconomic status, ethnic origin, race, religion, or disability. To meet the needs of its community, the College focuses on providing support services, resources, community outreach, and partnerships; programs in basic skills development; vocational, technical, and occupational training; and college/university transfer preparation.

ROLE AND SCOPE

In order to implement its mission through clearly defined programs and services, the College:

offers credit programs leading to associate degrees, diplomas and certificates designed for immediate entry into employment, an associate degree in general education, and associate degrees designed to transfer to four-year institutions. The College also offers pre-curriculum programs for students to develop academic proficiency so that they may successfully complete curriculum courses.

provides occupational career enhancement programs for individuals and support for economic development to businesses, industries, and agencies. Basic skills education, English as a Second Language, and a wide variety of continuing education courses and programs for personal enrichment are offered on campus and throughout the county. The College further serves its constituents by providing a broad range of community services, partnerships and outreach programs.

provides a wide range of support services designed to assist students in successfully fulfilling their education and occupational goals. These services, developed to meet the diverse needs of individual students, begin with their initial contact with the College and continue throughout their enrollment and job placement or transfer for further study.

practices sound fiscal management and systematic planning to provide facilities, equipment, and state-of-the art technology to ensure quality education opportunities at secure facilities accessible to Wake County citizens.

OUR VISION

Wake Tech will be a leader among the 58 NCCCS institutions and will:

- ◆ strive for quality and excellence in all educational programs by closely monitoring students satisfaction and success through a comprehensive system of research and institutional effectiveness
- ◆ position itself as a primary choice of Wake County citizens for workforce development, occupational, college/university transfer, basic education, and lifelong learning opportunities.
- ◆ be a major partner in attracting new and expanding business and industry by emphasizing human resource development and technology transfer.

- ◆ maximize service to area citizens by listening and responding to changing educational needs.

COLLEGE GOALS

Student Success

Provide a dynamic learning environment to ensure successful achievement of students' goals by administering sound policies, curricula, instruction and support services.

Workforce Development

In collaboration with *Regional Economic Development Partnerships*, identify the workforce needs of emerging jobs in rural and urban economies in North Carolina. Develop and implement the educational and training programs necessary to meet the workforce needs of each region and college services area and promote recruitment, retention and development of high quality faculty and staff necessary to achieve the educational and training objectives of the community college system and provide North Carolina with a world-class workforce.

Diverse Populations Learning Needs

Provide North Carolina citizens with the opportunity to develop essential skills for lifelong learning. Upgrade and retrain North Carolina learners for the workplace through flexible, accessible, customized educational and training programs within their communities.

Resources

Continuously research, analyze and secure the resources necessary to fulfill the mission of the North Carolina Community College System and develop processes for measuring the effectiveness of resource allocations and utilization, within the North Carolina Community College System.

Technology

Encourage and support North Carolina Community College faculty and staff in the effective and efficient uses of instructional technology and administrative computing systems to improve the delivery of academic programs to North Carolina citizens.

Community Services

Provide courses and support service activities for the enrichment of the community's civic, economic, and cultural needs.

Southern Association of Colleges and Schools Accreditation

Wake Technical Community College is accredited by the Commission on Colleges of the Southern Association of Colleges and Schools (1866 Southern Lane; Decatur, Georgia 30033-4097; Telephone Number 404-679-4501) to award the associate degree.

GLOSSARY

Academic Extension (non-credit) Courses consist of single courses, each complete in itself, designed to serve the academic educational needs of adult citizens.

Academic Semester - A sixteen week period during which credit classes are offered.

Academic Year - The academic year includes fall and spring semesters as well as an eleven-week summer term.

Accreditation - A formal means of recognizing an institution for maintaining standards that qualify the graduate for admission to higher institutions or for professional practice. Accrediting agencies are responsible for establishing the standards and evaluating the school's compliance with them (e.g., Southern Association of Colleges and Schools, American Dental Association, Engineering).

Accountability - The acceptance of personal responsibility for the achievement of predetermined measurable objectives.

Adult Education - Programs offered by a community college or technical institute that provide opportunities for adults and out-of-school youth to further their education.

Associate in Applied Science Programs - These programs range from 64 to 76 semester hour credits. A full-time student can typically complete one of these programs within two years. In addition to major course work, associate in applied science degree programs require a minimum of 15 semester hour credits of general education. General education requirements include course work in communications, humanities/fine arts, social/behavioral sciences and natural sciences/mathematics. Certain courses in associate degree programs may be accepted by a four-year college or university for transfer credit in an associated field.

Average Annual FTE - The annualized FTE of the fall and spring semesters added together for a given year.

Example: One full-time equivalent (FTE) student represents 16 student membership hours per week for 16 weeks or 256 student membership hours for each semester enrolled. Thus, if:

Fall Semester = $\frac{2,483,200}{512}$ membership hours = 4850 FTE
512 membership hours annualized
(256 X 2 semesters = 512)

Spring Semester = $\frac{2,380,800}{512}$ = 4650 FTE

Average Annual FTE = 4850 (Fall)
+4650 (Spring)
9500

Avocational Extension (non-credit) Courses consist of single courses, each complete in itself, which focus on an individual's personal or leisure needs rather than his occupation, profession, or employment.

Basic Skills - One of the primary missions of Wake Tech is to offer educational opportunities for adults 16 years of age and older who are out of school. Wake Tech provides educational opportunities through five major literacy components, consisting of classes located at work sites, churches, community centers, schools, libraries, sheltered workshops, prisons and the community college campuses.

Adult Basic Education (ABE) - A program of basic skills for adults, 16 years of age or older and out of school, who function at less than a high school level.

General Educational Development (GED) - A high school equivalency program enabling adults to take the General Education Development Tests to determine if they are at the 12th grade completion level of English, social studies, science, reading, and math. Individuals achieving the required scores on the GED are awarded the High School Equivalency Diploma. The program is open to individuals 18 years or older.

Adult High School (AHS) - A program of instruction offered cooperatively with local public school systems to help students earn an adult high school diploma.

English as a Second Language (ESL) - A program of instruction to help adults with limited or no English language proficiency.

Compensatory Education - A special state-funded educational program for developmentally handicapped adults (over 17 years of age).

Base Budget - Appropriations made by the Legislature to fund the current level of operation.

Capital Outlay - Capital outlay expenditures are those that result in the acquisition of fixed assets or additions to fixed assets (i.e., expenditures for land, buildings, or equipment).

Categorical Funds (restricted) - Funds from a federal, state, local, or private source that are restricted to expenditures in a particular category or program.

Certificate Programs - These programs range from 12 to 18 semester hour credits and can usually be completed within one semester by a full-time student. Associate degree level courses within a certificate program may also be applied toward a diploma or an associate in applied science degree.

Certification - A voluntary form of recognition for knowledge and skill in a particular profession.

Clock Hour - One hour of instruction given one student. Class periods from 50-60 minutes may be counted as one clock hour depending on the type of instruction delivered.

College Transfer Programs - These programs are offered through the Associate in Arts, Associate in Fine Arts and Associate in Science degrees. The Associate in Arts and the Associate in Science programs are part of the Comprehensive Articulation Agreement (CAA). This agreement addresses the transfer of students between institutions in the North Carolina Community College System and the constituent institutions of the University of North Carolina System.

Community Service Programs consist of those continuing education (extension) programs that are directed to the academic, avocational, and development of personal skills of the community.

Competency-Based Instruction - Instruction based on measurable student performance outcomes consistent with the skills and knowledge needed by entry-level employees in a particular field.

Continuing Education/Extension Programs include New and Expanding Industry, and Self-Supporting Recreational programs in addition to the Regular Budget Extension program areas of Adult High School, Academic Extension, Avocational Extension, Occupational Extension, Practical Skills, Adult Basic Education and Compensatory Education.

Credit Hour - An instructional unit used for recognition of the amount of credit a student earns for a given course. Example: Semester Credit Hour - A student who spends one classroom hour per week in a class for sixteen weeks earns one semester hour credit.

Current Expense - Funds used for the general operation of the institution to include salaries, benefits, and other instructional costs.

Curriculum Programs - A term used to describe a wide variety of planned educational programs which range in length from one semester to two years. The programs lead to certificates, diplomas or associate degrees, depending on the nature of the curriculum. Curriculum programs include certificate, diploma, Associate in Applied Science, Associate in Arts, Associate in Fine Arts, Associate in Science and Associate in General Education programs.

Developmental Education - A program providing specialized credit courses for students who need to improve their basic skill in order to perform at the level required for admission to degree and diploma programs. Usually these courses are in reading, writing, and mathematics.

Diploma Programs - These programs range from 36 to 48 semester hour credits and can usually be completed by a full-time student within two semesters and one summer term. Associate degree level courses within a diploma program may also be applied toward an Associate in Applied Science degree.

English as a Foreign Language (EFL) A pre-curriculum program designed to help non-native speaking students acquire sufficient skills in English to enter and succeed in curriculum (academic) programs. These courses are available only on Wake Tech's 401 South Campus.

English as a Second Language (ESL) - A program of instruction to help adults with limited or no English language proficiency. These courses are usually offered through continuing education at off-campus sites for students who have non-academic goals such as improvement of job performance, better communication with family members or the general public, etc.

Expansion Budget - Additional funds from the Legislature to increase the quantity or quality of services rendered.

Fiscal Year - The twelve-month period upon which the institution's budget is based, July 1 - June 30.

Full-Time Equivalent (FTE) - One full-time equivalent (FTE) student represents 16 student membership hours per week for 16 weeks or 256 student membership hours for each semester enrolled.

Annual Curriculum FTE - The total of fall and spring FTE.

Annual Extension FTE - The total of spring, summer and fall sequenced periods FTE.

Budget Full-Time Equivalent (B/FTE) - Used to prepare the operating budget and to provide for an equitable distribution of the operating funds allocated by the State Board to the institutions.

Equipment Full-Time Equivalent (E/FTE) - Used to prepare the equipment budget and to provide for an equitable distribution of the equipment funds allocated by the State Board to the institutions.

Library Full-Time Equivalent (L/FTE) - Used to prepare the library budget to provide for an equitable distribution of library funds allocated for the purchase of library books and audiovisual materials.

Credit Hour Full-Time Equivalent (H/FTE) - Used in furnishing data to the North Carolina Commission on Higher Education Facilities and the University of North Carolina.

Construction Full-Time Equivalent (C/FTE) - Used to determine priorities and institutional eligibility for federal and state construction funds for the institutions.

Full-Time Students - A student is considered full time if he/she carries 12 or more semester credit hours of classes.

General Education Programs - These programs are designed for individuals wishing to broaden their education, with emphasis on personal interest, growth and development. The two-year General Education program provides students opportunities to study English, literature, fine arts, philosophy, social science, science and mathematics at the college level. All courses in the program are college-level courses. Many of the courses are equivalent to college transfer courses; however, the program is not principally designed for college transfer. Successful completion of 64-65 semester hour credits leads to an associate in general education degree.

Human Resources Development (HRD) - A program for chronically unemployed adults with prevocational training and counseling.

Job Training Partnership Act (JTPA) - A federal program designed to provide job training and employment opportunities for economically disadvantaged, unemployed, or underemployed persons.

Learning Laboratory Programs (Center) consists of resources to help students succeed in their courses of study at Wake Tech. A learning lab coordinator or instructor offers one-on-one tutorial assistance, combined with a variety of other techniques and materials such as audiovisual and computer equipment and self-instructional materials, in an effort to help students learn.

New and Expanding Industry Programs provide for the training needs of new industries which are moving into the state and also for existing industries undergoing a major expansion which result in the need for additional skilled manpower.

Non-Credit (Extension) Courses - Courses for professional training, upgrading or general interest.

Occupational Education - Any type of instruction or training (credit or non-credit) that prepares one to enter an occupation.

Other Costs - A term used to describe current instructional and operating instructional support costs excluding personnel and the associated fringe benefits. The term is used for supplies, travel,

postage, etc.

Pell Grants - Needs-based federally funded grants.

Practical Skills Extension (non-credit) Programs consist of single courses each complete in itself, designed to provide practical training for persons pursuing additional skills which are not considered their major primary vocation but may supplement income or may reasonably lead to employment.

Regular Budget Extension Programs include Adult High School, Occupational Extension, Adult Basic Education and Compensatory Education.

Self-Supporting Recreational Programs are self-supporting courses which the college may provide at the request of the community but for which the college receives no budgetary credit.

Unduplicated Headcount - The total number of students (both full-time and part-time) enrolled in all courses during a year. Each student is counted only once during the year regardless of the number of classes he/she takes or the number of semesters for which he/she registers.

Source: A Matter of Facts, The North Carolina Community College System Fact Book, 2006.

Annual Statistical Report, 2004-2005, North Carolina Community College System.

THE COLLEGE

HISTORY

Wake Technical Community College is a public educational institution, nonprofit and tax supported, under the control of a Board of Trustees. It is an institutional member of the North Carolina System of Community Colleges, State Board of Community Colleges. Authority for the establishment of the College is found in Chapter 115D of the General Statutes of North Carolina and the amendments thereto.

The College was chartered April 3, 1958, as the Wake County Industrial Education Center under the governance of the Wake County Board of Education. In 1961, the Board employed Dr. Kenneth M. Wold as the Center's first Director and charged him with the responsibility of "developing a program of training for adults."

Because there was no central training facility, the first training efforts were conducted in cooperation with employers and users of the training. Practical nursing classes, for example, were held at Wake Memorial Hospital; fire prevention and lifesaving classes were held among area fire departments; and instruction in machine operating and supervision was provided at industrial locations.

On October 7, 1963, operation of the Center began at its present location in a single building of 40,795 square feet and costing \$560,000. There were 34 full-time students enrolled in classes on campus and an additional 270 enrolled in industrial training programs at locations throughout the County.

On January 8, 1964, the Center was formally dedicated as the W. W. Holding Industrial Education Center and was transferred from the authority of the Board of Education to an eight-member Board of Trustees.

In September 1965, Dr. Kenneth M. Wold resigned as Director, and Robert W. LeMay, Jr., head of the Center's general adult and community service programs, was named Acting Director. Mr. LeMay was named President on February 16, 1966.

On March 3, 1966, W. W. Holding Industrial Education Center was granted approval by the State Board of Education as the W. W. Holding Technical Institute.

The name was changed to Wake Technical Institute in 1974 and to Wake Technical College on March 1, 1980. The name was changed to Wake Technical Community College on December 1, 1987, to better reflect the college-level instruction that is provided.

Robert W. LeMay, Jr., served as President through June 30, 1979, at which time James A. Cox, the College's Vice President for Administration, was appointed temporary President. He served until June 30, 1980.

Dr. Bruce I. Howell was named the College's third President on July 1, 1980.

The College entered a contractual agreement with the University of North Carolina at Greensboro to offer college transfer courses in the fall of 1991. Subsequently, a college transfer program was approved to be offered by Wake Tech in the fall quarter of 1992. Students enrolled in the College Transfer program earn Associate in Arts and Associate in Science degrees. The College became a fully comprehensive community college in the fall of 1992.

The Wake Technical Community College News and Observer Adult Education Center

formally opened in August 1993. The Center was made possible through a \$100,000 gift from the News and Observer Foundation. Located on Capital Boulevard, the Center provides a home for the College's basic skills program, one of the largest in the North Carolina Community College System.

Wake Tech's share of county and state bond referendums held in 1993 was \$41 million. These funds were designated to build a student education/classroom building, connect the main campus to Fuquay-Varina's waste water treatment plant, construct a parking deck at the Health Education Campus, and renovate and repair existing facilities. During the summer of 1994, construction began on the student education/classroom building, and it was opened on December 3, 1996.

In January 1994, Wake Tech acquired 132 acres of land on Highway 401 North for a site for a northeast Wake County campus. This campus will serve the residents of northern Wake County. Wake Tech was designated a multi-campus college by the State Board of Community Colleges on February 16, 1996.

After a two-year in-depth self-study and an on-site visit by collegiate peers from across the southeastern United States in March 1995, Wake Tech's accreditation to award the associate degree was reaffirmed by the Commission on Colleges of the Southern Association of Colleges and Schools for another ten years.

In the fall of 1997, Wake Tech, along with the other 57 colleges of the North Carolina Community College System, converted from the quarter system to the semester system.

On June 19, 1998, the State Board of Community Colleges approved Wake Tech's request to change the Allied Health Center to the Health Sciences Campus.

In 2001 Wake Tech purchased 12 acres adjacent to Tech Road (SR 2811) and the US 401 South Main Campus for the construction of additional parking spaces for faculty, staff and students.

In 2002 Wake Tech along with several other community colleges (Edgecombe, Johnston, Nash, Wayne, and Wilson) opened the Eastern North Carolina Plastics Technology Center in Zebulon (Wake County). This 8,000 square foot building will house the specialized laboratory courses associated with the Manufacturing Technology/Plastics Program at each of these six institutions.

On October 15, 2003, Dr. Bruce I. Howell retired, as President of Wake Technical Community College and Dr. Stephen C. Scott became the College's fourth President.

In December 2005 the Commission on Colleges of the Southern Association of Colleges and Schools reaffirmed Wake Technical Community College's accreditation for another ten years.

FACILITIES GROWTH

When Wake Tech opened in 1963, there was one building of 40,795 square feet on a 30.8 acre tract. This building, named in honor of W. W. Holding, a long-time member of the Wake County Board of County Commissioners, was twice enlarged to its present size of 43,348 square feet.

In 1966-67, a maintenance shop and a laboratory building of 8,990 square feet were added to the campus. Additional property was purchased between 1968 and 1972, which increased the campus size to 76.64 acres.

In 1968, the business education building of 22,540 was constructed and named in honor of Leo Pucher, the College's first Board of Trustees Chairman who was also instrumental in founding the College. Also, vocational laboratories were expanded in 1968 and a 36,405 square-foot addition, which was named in honor of Dr. I. E. Ready who was Director of the Department of Community Colleges, was completed.

Two buildings and approximately 3.5 acres adjacent to Wake Medical Center were dedicated in 1972 by the Wake County Commissioners for health education. Subsequently, a power mechanics laboratory building was completed in 1974 on the main campus.

By 1975, a student services building of 28,066 square feet was constructed for the rapidly increasing student body. This facility was named in honor of Robert W. LeMay who served as President from 1966 until 1979.

Maintenance and storage facilities were added in 1980.

The technical education building, occupied in 1982, provides 40,860 square feet of classroom, laboratory and auditorium space for the conduct of technical education.

The College continued to grow with an 8,320 square-foot microelectronics laboratory addition completed in early 1984.

A mechanical technology building was completed in 1987. In approximately 16,980 square feet of space, this building provides space for a machine shop, two automation/robotics laboratories, and three classrooms.

In late 1988, construction was completed on a 84,000 square-foot library education building. This building features a 28,000 square-foot library with study rooms, drafting and typing labs; an enlarged audiovisual area with a new studio and two darkrooms; two architectural drafting labs; and 36 additional classrooms.

The 1990-91 school year was a busy one for campus construction. A 16,600 square-foot child care center was completed. It includes classrooms, offices, child care areas, and a full-service kitchen. Also, a 32,000 square-foot health education building that houses a library, offices, classrooms, and laboratories was completed. Additional parking was provided for both facilities.

In August 1993, the College, with the assistance of a \$100,000 gift from the News and Observer Foundation, opened the News and Observer Adult Education Center. Located on Capital Boulevard, the Center provides a home for the College's basic skills program, one of the largest in

the North Carolina Community College System. The 21,545 square-foot leased building, previously occupied by Hardbarger Business College, includes 12 classrooms, three computer labs, a student lounge, ten offices, a seminar/conference room, and a full resource center with individualized learning materials.

In 1996, Wake Tech opened a parking deck at the Health Sciences Campus and a 110,000 square-foot Student Education building on Main Campus. The Student Education building houses the Hotel and Restaurant Management and Culinary Arts programs and the kitchens and other facilities necessary for those programs, a conference center, and new cafeteria.

During the summer of 1998, the College purchased the Wells Furniture Company property at the corner of U.S. 401 south and Tech Road (SR 2811). This adds 14,200 square feet to the College's facilities inventory.

In the Spring 2000, Wake Tech opened the Business and Industry Center located at 600 New Waverly Place, Cary. The 14,963 square-foot leased building includes five computer labs, three classrooms, two conference rooms and ten offices.

In 2001 Wake Tech purchased 12 acres and constructed additional parking spaces adjacent to Tech Road (SR 2811) behind the Wells Furniture Company property.

In 2002 Wake Tech along with several other community colleges (Edgecombe, Johnston, Nash, Wayne, and Wilson) opened the Eastern North Carolina Plastics Technology Center in Zebulon (Wake County). This 8,000 square foot building will house the specialized laboratory courses associated with the Manufacturing Technology/Plastics Program at each of these six institutions.

In 2003, a 75,279 square-foot health sciences building was completed as well as an 86,500 square-foot engineering technology building on the main campus.

In 2004, the Automotive and Heavy Equipment Technology Complex (40,906 square feet) was completed on the main campus.

In 2005, a 30,000 square foot classroom/office addition was completed between Pucher and LeMay Halls connecting the two buildings. The complex was renamed Pucher-LeMay Hall. Also, the college purchased an office building off of Chapanoke Road and is now in the process of renovating the building (100,000 square footage) for future classroom and office space. Wake Technical Community College also moved its Business and Industry Center to another location in Cary in order to expand the college's curriculum and continuing education programs in the western section of the county. This new Western Wake Center opened prior to the Fall 2005 semester and encompasses 36,000 square feet (leased space) at the intersection of Kildaire Farm Road and Ten-Ten Road.

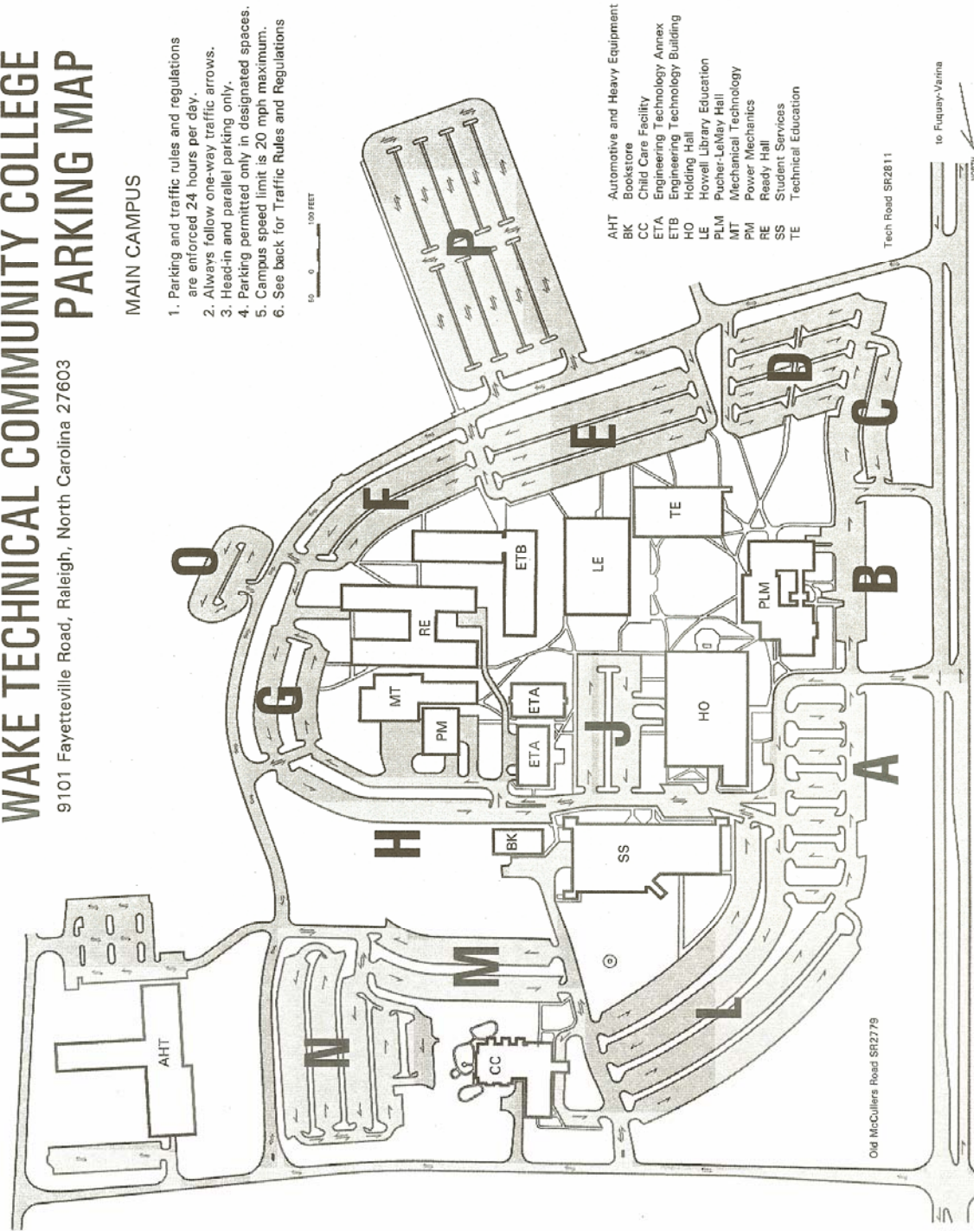
WAKE TECHNICAL COMMUNITY COLLEGE PARKING MAP

9101 Fayetteville Road, Raleigh, North Carolina 27603

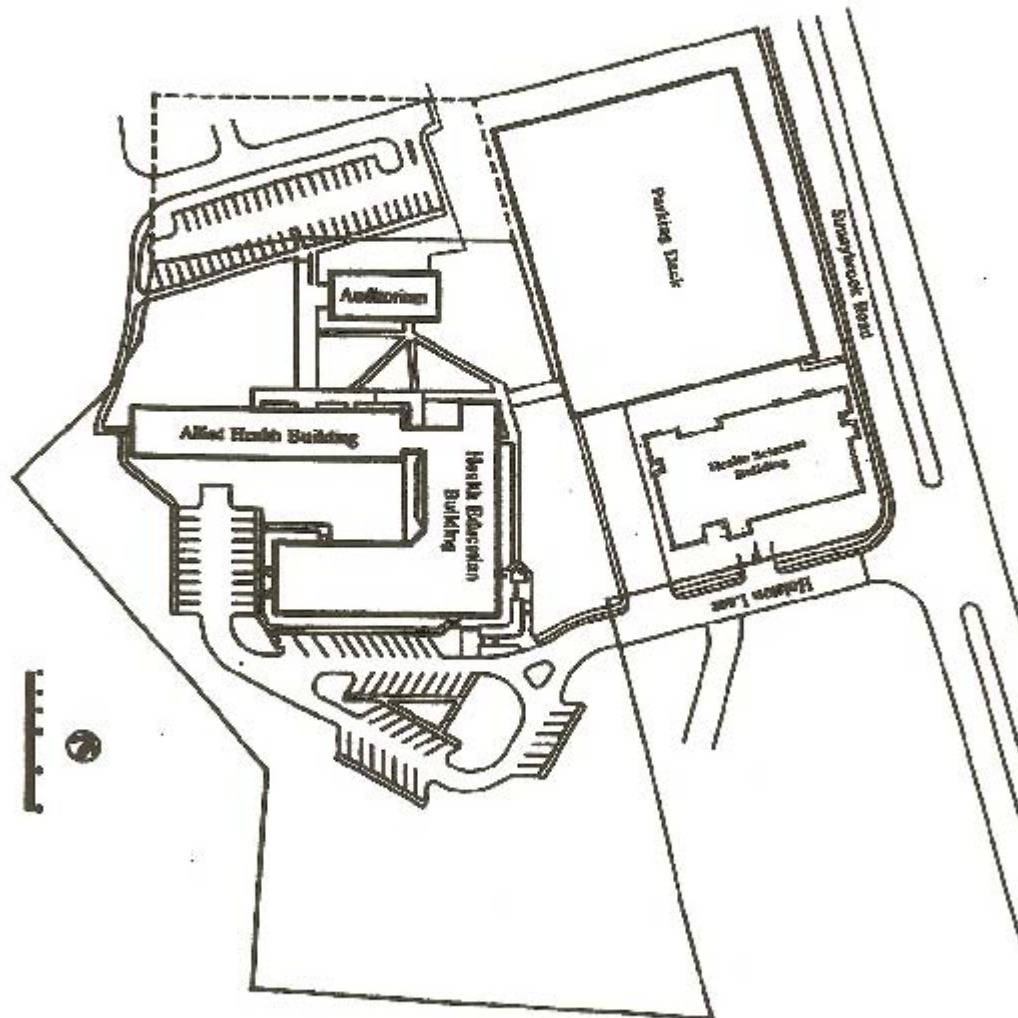
MAIN CAMPUS

1. Parking and traffic rules and regulations are enforced 24 hours per day.
2. Always follow one-way traffic arrows.
3. Head-in and parallel parking only.
4. Parking permitted only in designated spaces.
5. Campus speed limit is 20 mph maximum.
6. See back for Traffic Rules and Regulations

50 0 100 FEET



Wake Technical Community College
Health Sciences Campus Plan
Raleigh, North Carolina



MEMBERS OF THE BOARD OF TRUSTEES	
NAME, PHONE, FAX, E-MAIL	EXPIRATION DATE AND AGENCY APPOINTING
Dr. William K. Atkinson (B) 350-8112 Fax : 350-2847 E-mail : batkinson@wakemed.org	June 30, 2009 Wake County Board of Education
Mrs. Wanda W. Denning Fax: 552-0980 E-mail: wwden@aol.com	June 30, 2009 Wake County Commissioners
Dr. Benjamin D. Reese, Jr. (B) 919-684-8229 Fax: 919-684-8580 E-mail: ben.reese@duke.edu	June 30, 2009 Governor
Mrs. Nancy Barker Johns (B) 552-3431 Ext. 719 Fax : 552-1833 E-mail : nancyjohns@bobbarker.com	June 30, 2008 Wake County Commissioners
Mr. Harvey L. Montague (B) 362-7477 Fax: 387-8871 E-mail: montaguebldg@earthlink.net	June 30, 2008 Wake County Board of Education
Mr. J. Anthony (Andy) Penry (B) 833-9449 Fax : 833-9448 E-mail : andy.penry@tprr.com	June 30, 2008 Governor
Dr. Carl D. Price - Retired Educator Fax: 661-3449 E-mail: cdprice@earthlink.net	June 30, 2007 Governor
Mr. James R. Talton, Jr. (B) 463-9940 Ext. 103 Fax: 463-9983 E-mail: jim@impactholdings.com	June 30, 2007 Wake County Board of Education
Mr. Robert M. Zippay (Chair) Retired, John Deere and Company E-mail: rzippay@att.net	June 30, 2007 Wake County Commissioners
Mr. George N. Hamrick (B) 266-4500 Fax: 266-1816 E-mail: ghamrick@nc.rr.com	June 30, 2006 Governor
Mr. Jim W. Perry (Vice Chair) (B) 325-3000 Fax: 919-325-3013 E-mail : jimp@waste-ind.com	June 30, 2006 Wake County Board of Education
Mr. R. Keith Shackelford (B) 556-3134 Fax: 556-8366 E-mail: rkshack@wpalaw.com	June 30, 2006 Wake County Commissioners
Mr. Elkin Salinas E-mail: enycolombiano@aol.com	President, SGA Ex Officio, Non Voting
Dr. Stephen C. Scott (B) 662-3301 Fax: 779-3360 E-mail: scscott@waketech.edu	Secretary of the Board of Trustees

FORMER MEMBERS OF THE BOARD OF TRUSTEES	
NAME	EXPIRATION DATE
Lawrence E. Allen, Sr.	June 1995
Lide Cooke Anderson	June 2005
William D. Ashley	June 1973
Joseph S. Ashworth	February 1995
Thomas R. Ashworth	June 1989
W.W. Balentine	June 1965
Robert J. Barker	June 2001
A.L. Becker	June 1975
David B. Bell, Jr.	June 1996
W. Jennings Booth, Sr.	September 1986
Ralph G. Brashear	June 1985
Doris M. Burke	June 2004
Joan H. Burkhardt	June 1998
Donald H. Carpenter	June 1979
Harry K. Clark, II	November 1978
F. Roland Danielson	September 1979
C.P. Dean	June 1977
Paul A. DelaCourt	June 1975
Anthony DeLisse	June 1977
W.G. Enloe	June 1966
Emol A. Fails	May 1978
Johnny I. Farmer	June 2003
Ralph E. Forrest	June 1991
Mary M. Gentry	June 1987
William T. Graham	June 1999
T.M. Grimes	June 1971
W.H. (Buddy) Holding	June 1992
Joseph Q. Holliday	June 1977
William W. Johnson	June 1967
Walter M. Keller	June 1995
Henry Knight	June 2002
E.A. Loeser	December 1966
Paul M. Maulsby	October 2001
Joy E. Paige	June 2003
Don H. Perry	June 2002
Robert A. Pittillo, Jr.	June 1967
Leo E. Pucher	June 1979
Phillip O. Redwine	June 1977
James O. Roberson	June 2004
Carter S. Schaub	June 1973
Lee C. Smith	August 1966
Melba T. Sparrow	April 1993
Jack M. Stancil	June 2000
James P. Swindell	June 1997
William F. Troxler	June 1987
Harold H. Webb	June 1981
Willi T. Webb	June 1995
James C. Wheeler	December 1992
C.V. Whitley	June 1965
Cliffornia Wimberley	June 1990
W.L. Woodard	June 1975

WAKE TECHNICAL COMMUNITY COLLEGE FOUNDATION, INC.

Wake Technical Community College Foundation is a 501 (c) (3) nonprofit corporation established to serve as a conduit for a strong financial partnership with the private sector, supporting the community mission of Wake Technical Community College with gifts of cash and in-kind contributions of equipment and services that enhance the College's ability to fulfill its mission.

A 20-member Board of Directors comprised of community and business leaders in the Triangle area promote and administer a variety of funds from the private sector, including:

The Wake Tech Fund is the general fund that supports programs that receive limited or no support from traditional tax revenues, including institutional opportunities, student scholarships, financial aid grants, professional development needs of faculty and staff, the acquisition of state-of-the-art equipment and other areas that elevate the College's service role in the community to a greater prominence.

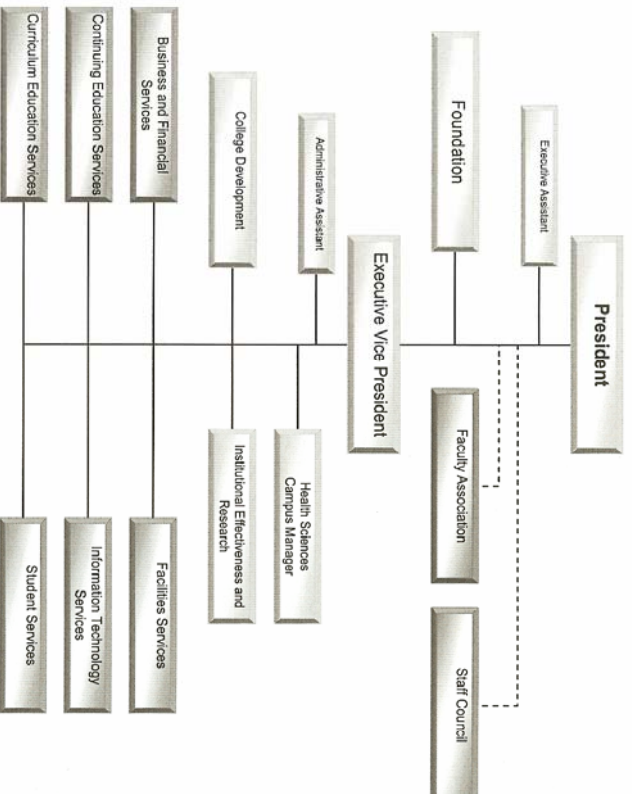
Donor-Restricted Funds benefit the interests of the donor as well as the College by providing restricted gifts to specific academic programs and scholarships that accommodate and address certain employment needs.

Endowment Funds are often established through various estate or major gifts which qualify for special tax consideration, creating permanent funds from which the interest income can be allocated to a specific area or serve as a source of supplemental revenues to state and local taxation.

Gifts-in-Kind from business and industry enhance and improve the quality of Wake Tech's instructional programs and labs with equipment that keeps technology current and instruction up to industry standards.

Since 1988, corporations, businesses, alumni, friends, trustees and employees have strengthened Wake Tech's programs with cash and noncash gifts to Wake Technical Community College Foundation totaling over \$8 million.

Office of the President



MEMBERSHIPS, APPROVALS, AND ACCREDITATIONS

The College Is A Member Of:

Accreditation Board for Engineering Technology
American Association of Community Colleges
American Association for Higher Education
American Dental Association, Commission on Dental Accreditation
American Mathematical Association of Two-Year Colleges
American Society of Radiologic Technicians
American Technical Education Association
Association of Collegiate Schools of Architecture
Association of Community College Trustees
Association on Higher Education and Disability
Carolinas Association of Collegiate Registrars and Admissions Officers
Chamber of Commerce--Apex
Chamber of Commerce--Cary
Chamber of Commerce--Fuquay-Varina
Chamber of Commerce--Garner
Chamber of Commerce--Knightdale
Chamber of Commerce--Morrisville
Chamber of Commerce--Raleigh
Chamber of Commerce-Wake Forest
Chamber of Commerce-Zebulon
College and University Mail Services
College Board
College News Association of the Carolinas
Commission on Accreditation of Allied health Education Programs
Community College Business Officials
Community College Leadership Institute
Community Education Network
Cooperative Education Association, Inc.
Council for Higher Education Accreditation
Council for Resource Development
Council on Hotel, Restaurant, and Institutional Education
Joint Review Committee on Education in Radiologic Technology
Keep North Carolina Clean and Beautiful
National Accreditation Agency for Clinical Laboratory Sciences
National Alliance of Community and Technical Colleges
National Association for Adults with Special Learning Needs
National Association for Foreign Student Affairs
National Association of College and University Business Officers
National Association of Colleges and Employers
National Association for Student Financial Aid Administrators
National College Testing Association
National Commission for Cooperative Education
National Council for Marketing and Public Relations
National Council for Research and Planning
National Council for Student Development
National Fire Protection Association
National HEP Camp Association
National Initiative for Leadership and Institutional Effectiveness
National League for Nursing
National Organization for Associate Degree Nursing
National Prime Users Group
National Restaurant Association
National Safety Council

North American Small Business International Trade Educators (NASBITE)
North Carolina Association of Colleges and Universities
North Carolina Association of Community College Business Officials
North Carolina Association of Community College Trustees
North Carolina Association of Coordinators of Veterans Affairs
North Carolina Association on Higher Education and Disability
North Carolina Bar Association
North Carolina Chapter-Colleges and Universities personnel Association
North Carolina Citizens for Business and Industry
North Carolina Community College Student Development Personnel Association
North Carolina Preservation Consortium (NCPC)
North Carolina Restaurant Association
Professional Construction Estimators Association
Public Relations, Information, and Marketing Association
Raleigh-Wake Personnel Association
Society for Human Resource Management
Southern Association of Collegiate Registrars and Admissions Officers
Southern Association of Community, Junior, and Technical Colleges
Southern Association of Student Employment Administrators
Travel Council of North Carolina
University and College Designers Association
Wake County Interagency Council for the Homeless
Wake County Interagency Council for Youth
Water Environmental Federation Financial Management Association

The College Is Approved By:

Division of Vocational Rehabilitation
Insurance Agents Pre-Licensing Education Program
North Carolina Board of Nursing
North Carolina Department of Insurance
North Carolina Office of Emergency Services
North Carolina Real Estate Commission
North Carolina State Approving Agency for Veterans Education and Training
North Carolina State Board of Community Colleges

The College Is Accredited By:

Wake Technical Community College is accredited by the Commission on Colleges of the Southern Association of Colleges and Schools (1866 Southern Lane, Decatur, Georgia 30033-4097; Telephone Number (404) 679-4501 to award the associate degree.*

North Carolina Criminal Justice Education and Training Standards Commission

The College Has Certain Programs Accredited By:

Accreditation Board for Engineering Technology**
Commission on Dental Accreditation, American Dental Association***
Committee on Allied Health Education and Accreditation:
 American Association of Medical Assistant's Endowment
Joint Review Committee on Education in Radiologic Technology
 National Accrediting Agency for Clinical Laboratory Sciences
North Carolina Board of Nursing
The Medical Assisting Program is accredited by the Commission on Accreditation of Allied Health Education

Programs (CAAHEP); on recommendation of the Committee on Accreditation for Medical Assistant Education****

*When it is appropriate to refer to the status between Wake Technical Community College and the Commission on Colleges in catalogs, brochures, and advertisements, the following statement is to be used: **"Wake Technical Community College is accredited by the Commission on Colleges of the Southern Association of Colleges and Schools (1866 Southern Lane, Decatur, Georgia 30033-4097; Telephone Number (404) 679-4501) to award the associate degree."**

**Five of Wake Technical Community College's Engineering Technology curriculums are nationally accredited by the Technology Accreditation Commission of the Accreditation Board for Engineering and Technology, Inc. The programs are Automation Engineering Technology, Civil, Computer, Electronics and Mechanical Engineering Technology.

***The programs Dental Hygiene and Dental Assisting are accredited by the Commission on Dental Accreditation of the American Dental Association.

****aka The Curriculum Review Board of the American Association of Medical Assistants' Endowment (AAMAE).

PROGRAMS OFFERED at WAKE TECHNICAL COMMUNITY COLLEGE

Associate Degree Programs

A degree is awarded for successful completion of a two-year program of study.

General Education

- B Associate in General Education A10300

ColielUniversity Transfer

- B Associate in Arts A10100
- B Associate in Science A10400
- B Associate in Science - Pre-Major: Engineering A1040D

Business Education

- B Accounting A25100
- B Business Administration A25120
- B Business AdministrationElectronic Commerce A25121
- B Business AdministrationHuman Resources Management A2512C
- B Criminal Justice Technology A55180
- D Culinary Technology A55200
- B Early Childhood Associate A55220
- D Hotel and Restaurant Management A25240
- D Medical Office Administration A25310
- D Office Systems Technology A25360
- D Office Systems TechnologyLegal A2536A

Computer Information Systems

- B Advertising and Graphic Design A30100
- B Computer Programming A25130
- B High Performance Computing A25230
- B Information Systems A25260
- B Internet Technologies A25290
- B Networking Technology A25340

Engineering Technology

- D Architectural Technology A40100
- B Automation Engineering Technology A40120
- D Civil Engineering Technology A40140
- B Computer Engineering Technology A40160
- B Electronics Engineering Technology A40200

- D Electronics Engineering TechnologyInstrumentation A4020A
- D Environmental Science Technology A20140
- B Industrial Engineering Technology A40240
- D Industrial Pharmaceutical Technology A20180
- D Landscape Architecture Technology A40260
- D Manufacturing TechnologyPlastics A5032A
- B Mechanical Engineering Technology A40320
- D Surveying Technology A40380
- B Telecommunications and Network Engineering Technology A40400

Health Sciences

- D Associate Degree Nursing A45120
- D Dental Hygiene A45260
- D Emergency Medical Science A45340
- B General Occupational Technology A55280
- B Human Services Technology A45380
- B Human Services Technology! Developmental Disabilities A4538A
- B Human Services Technology/Substance Abuse A4538E
- D Medical Assisting A45400
- D Medical Laboratory Technology A45420
- D Radiography A45700

Vocational Technology

- D Air Conditioning, Heating and Refrigeration Technology A35100
- D Automotive Systems Technology A60160
- D ElectricalElectronics Technology A35220
- D Heavy Equipment and Transport Technology A60240
- D Heavy Equipment and Transport Technology/Construction Equipment Systems A6024B
- D Industrial Systems Technology A50240
- D Machining Technology A50300
- D Machining Technology/Tool, Die, and Mold Making A5030A
- D Mechanical Drafting Technology A50340

Diploma Programs

A diploma is a one-year course of study focusing upon marketable skills

Business Education

- B Early Childhood Associate D55220A
- D Office Systems Technology D25360A

Engineering Technology

- D Manufacturing TechnologyPlastics D5032AB

Health Sciences

- D Computed Tomography and Magnetic Resonance Imaging Technology D45200
- D Dental Assisting D45240
- B Medical Assisting D45400
- D Surgical Technology D45740
- B Therapeutic Massage D45750

Computer Information Systems

- D Computer Programming: Digital Game Programming D25130A

Vocational Technology

- D Air Conditioning, Heating, and Refrigeration Technology D35100A
- D Automotive Systems Technology D60160A
- D ElectricalElectronics Technology D35220A
- D Heavy Equipment and Transport Technology! Construction Equipment Systems D6024BA
- D Industrial Systems Technology D50240A
- D Machining Technology D50300A
- D Mechanical Drafting Technology D50340A
- D Plumbing D35300
- D Welding Technology D50420A

Legend

D=Day
E = Evening
B = Both

More Programs listed on Reverse

Certificate Programs

A certificate is a short course of study, often less than one year, providing skills in a specific area.

Business Education

- E Business Administration:
Customer Service C25120B
- B Business Administration: Sales Development C25120A
- B Business Administration/Human
Resources Management C2512CA
- E Culinary Technology C55200A
- B Early Childhood Associate C55220B
- B Medical Office Administration:
Medical Billing and Coding C25310B
- B Medical Office Administration:
Medical Office Specialist C25310A
- B Medical Office Administration:
Medical Transcription Specialist C25310C
- B Office Systems Technology: Integrated Office Systems C25360D
- B Office Systems Technology:
Office Publications Certificate C25360E
- B Office Systems Technology: Office Specialist I C25360F
- B Office Systems Technology: Office Specialist II C25360C
- B Office Systems Technology: Word Processing C25360B
- B Office Systems Technology/Legal C2536AA
- E Real Estate C25400A
- E Real Estate Appraisal C25420

Computer Information Systems

- B Advertising and Graphic Design: Graphics and Design C30100A
- B Advertising and Graphic Design:
Web and Graphic Design C30100B
- B Computer Programming: C++ Programming C25130C
- B Computer Programming: Computer Science C25130E
- B Computer Programming: Java Programming C25130A
- B Computer Programming: Oracle DBA Programming C25130D
- B Computer Programming: Oracle Developer C25130F
- B Computer Programming: Visual Basic Programming C25130B
- B High Performance Computing: Bioinformatics
Computing C25230B
- B High Performance Computing: Linux/Red Hat
Administration C25230C
- B Information Systems: Computer Forensics C25260J
- B Information Systems: Hardware Troubleshooting
and Repair C25260G
- B Information Systems: IT Support Technician C25260K
- B Information Systems: M.O.S. C25260A
- B Information Systems: Spreadsheet Management C25260E
- B Internet Technologies: E-Commerce Programming C25290B
- B Internet Technologies: Web Developer C25290A
- B Internet Technologies: Web Designer C25290C
- B Networking Technology: CISCO Certificate C25340C
- B Networking Technology: CISCO Certified Network Professional
(CCNP) C25340I
- B* Networking Technology: MCSE C25340A B
- Networking Technology: Network Security
Administration C25340H

Engineering Technology

- B Architectural Technology: Architectural CAD C40100A
- D Automation Engineering Technology:
Industrial Controls C40120A

- B Computer Engineering Technology:
C Language Programming C40160B
- B Computer Engineering Technology: Personal
Computer Specialist C40160C
- B Computer Engineering Technology: UNIX System
Management and Programming C40160A
- B Electronics Engineering Technology:
Basic Electronics C40200A
- B Industrial Engineering Technology: Industrial
Management C40240A
- B Industrial Engineering Technology: Industrial Quality C40240B
- D Manufacturing Technology/Plastics:
Manufacturing Practices C5032AG
- D Manufacturing Technology/Plastics: Plastics Extrusion C5032AC
- D Manufacturing Technology/Plastics: Plastics Injection
Molding C5032AF
- D Manufacturing Technology/Plastics: Plastics Materials C5032AH
- B Mechanical Engineering Technology:
Mechanical Design C40320A
- B Mechanical Engineering Technology: Thermo Mechanics
C40320B
- B Telecommunications and Network Engineering
Technology: Basic Telecommunications
Electronics C40400A
- B Telecommunications and Network Engineering
Technology: Data Networking Technology C40400B
- B Telecommunications and Network Engineering
Technology: Telecommunications Switching C40400C

Health Sciences

- D Computed Tomography Technology C45200A
- B Human Services Technology/Substance Abuse C4538EA
- D Magnetic Resonance Imaging Technology C45200B
- B Nursing Assistant C45480
- D Phlebotomy C45600

Vocational Technology

- B Air Conditioning, Heating, and Refrigeration C35100B
- B Basic Law Enforcement Training C55120
- B Construction Management Technology C35190B
- B Electrical/Electronics Technology:
Commercial Wiring Methods C35220C
- B Electrical/Electronics Technology:
Residential Wiring Methods C35220B
- B Heavy Equipment and Transport Technology: Fuel
Injection, Electrical, and Electronics C6024BC
- B Heavy Equipment and Transport Technology: Hydraulics,
Engines, and Transmissions C6024BB
- B Industrial Systems Technology C50240B
- B Machining Technology C50300B
- B Machining Technology: CNC Machining C50300C
- B Machining Technology/Tool, Die, and
Mold Making: Mold Making C5030AA
- B Mechanical Drafting Technology C50340B
- D Plumbing Applications and Diagrams C35300A
- D Plumbing: Modern Plumbing Codes and
Blueprint Reading C35300B
- B Welding Technology C50420B

Other Programs

Cooperative Agreement Programs

A Cooperative Agreement program is one in which a student is concurrently enrolled in high school **and** Wake Tech.

D Concurrent (Dual) Enrollment T90980 D Huskins Bill T90970

COLLEGE COMMITTEES

Executive Council

President, Chairman
Vice Presidents
Administrative Employees who report to the President
Staff Council President
Faculty Association President

Curriculum Education Services Council

Vice President of Curriculum Education Services, Chairman
Curriculum Education Deans
Dean of Evening Programs

Continuing Education Services Council

Vice President of Continuing Education Services, Chairman
Continuing Education Deans
Continuing Education Directors, Coordinators, and Instructional Supervisors are invited and encouraged to attend meetings.

Planning Council

President, Chairman
Executive Council
Faculty Association Representatives
Staff Council Representative
Basic Skills Representatives

Staff Council

Staff Council President
One representative for every 10 eligible staff employees in a given service area

Drug and Substance Abuse Council

Department of Criminal Justice faculty member, Chairman
Human Resources Specialist
Dean of Students
Manager of Security
One Counselor
One representative from Continuing Education Division
One faculty member from each Curriculum Division

Curriculum Committee

Vice President of Curriculum Education Services, Chairman
Curriculum Education Deans
The Registrar
Director of Cooperative Education

Distance Education Committee

Dean of Academic Support Division, Chairperson
Vice President of Curriculum Education Services
Vice President of Information Technology Services
Associate Vice President of Institutional Effectiveness and Research
Assistant Coordinator of Distance Education
Continuing Education Representative
Four (4) faculty members

Health, Safety, and Security Committee

Manager of Security, Chairman
Facilities Manager
Dean of Students
Dean of Evening Programs
Business Manager
One student recommended by the Student Government Association
Two instructors from the Main Campus
One instructor from the Health Education Campus
One Representative recommended by the Continuing Education Services Council

Information Technology Services Advisory Committee

Vice President of Information Technology Services, Chairman
Vice President of Curriculum Education Services
Vice President of Continuing Education Services
Chief Business Officer
The Registrar
Curriculum Deans

Institutional Effectiveness (IE) Advisory Committee

Associate Vice President of Institutional Effectiveness and Research, Chairman
Curriculum Education Services SGA President
Continuing Education Representative
Student Services Representative
Administrative Services Representative
Adult Education Center Campus Representative
Health Science Campus Representative
Faculty Association Representative
Staff Council Representative

Faculty Professional Development Committee

Dean of Academic Support Division, Chairperson
Representatives from each of the curriculum divisions

Tuition Assistance Committee

Executive Director of the Wake Tech Foundation, Inc., Chairman
Vice President of Curriculum Education Services
Associate Vice President of Institutional Effectiveness and Research
President of the Faculty Association
President of the Staff Council
Vice President of Continuing Education Services

Grants Committee

Associate Vice President (Office of the Executive Vice President), Chairman
Vice President of Curriculum Education Services
Vice President of Student Services
Vice President of Continuing Education Services
Vice President of Information Technology Services
Facility Engineering Officer
Chief Financial Officer
Dean of Grants Development and Special Projects
Executive Director of Wake Tech Foundation, Inc.
Dean of Academic Support Division
Faculty Association Representative

Traffic Appeals Review Board

Executive Vice President or his designee, Chairman
Faculty Association Representative
Staff Council Representative
Student Government Association Representatives (2)

Faculty Association

One faculty member serves as President, Vice President, Secretary

The Faculty Association is open to all Wake Tech full-time faculty

Quality Enhancement Plan Committee

Dean of Planning and Accreditation, Chairman
Executive Council
Associate Vice President of Institutional Effectiveness and Research
Associate Vice President (Executive Vice President's Office)
Manager of Publications, Marketing, and Community Relations
Dean of Grants Development and Special Projects

**SERVICE AREA:
WAKE COUNTY**

DEMOGRAPHIC INDICATORS FOR WAKE COUNTY

LAND AREA IN SQUARE MILES	833.98
Density (Persons per square mile - 2004)	867.7

PERSONS (July 2004)

Total County Population	723,708	
Total Incorporated Population	551,692	76.2%
Total Unincorporated Population	172,016	23.8%
18 and Over	535,655	

MUNICIPAL POPULATION, 2000-2003

Municipality	2000 Census	July 2004
APEX	20,212	25,951
CARY	94,536	110,028
FUQUAY VARINA	7,898	10,300
GARNER	17,757	21,106
HOLLY SPRINGS	9,192	13,362
KNIGHTDALE	5,958	6,660
MORRISVILLE	5,208	12,126
RALEIGH	276,093	325,213
ROLESVILLE	907	1,036
WAKE FOREST	12,588	17,235
WENDELL	4,247	4,769
ZEBULON	4,046	4,458

OFFICE OF RESEARCH/SOURCE: N.C. OFFICE OF STATE BUDGET, AND
MANAGEMENT/September 2005
www.osbm.state.nc.us

STUDENTS

WAKE TECHNICAL COMMUNITY COLLEGE

CURRICULUM FTE LAST 5 YEARS

Year	Fall	Spring	Summer
2000-2001	3,281	3,382	1,193
2001-2002	3,579	3,382	1,193
2002-2003	3,750	3,661	1,202
2003-2004	3,885	3,753	1,161
2004-2005	3,990	3,841	1,179

JANUARY 2006

SOURCE: WAKE TECHNICAL COMMUNITY COLLEGE REGISTRAR

WAKE TECHNICAL COMMUNITY COLLEGE

STUDENT FINANCIAL AID

2004 - 2005

GRANTS, GIFT AWARDS SCHOLARSHIP	NUMBER OF STUDENTS	TOTAL DOLLARS	AVERAGE PER RECIPIENT
FSEOG	38	33,890	892
PELL GRANT TOTAL	2,568	5,215,067	2,031
EMPLOYMENT			
FWS	52	95,203	1,831
VOCATIONAL REHABILITATION	71	52,738	743
VETERANS ADMINISTRATION	92	169,029	1,837
JOB TRAINING PARTNERSHIP WIA, NAFTA	223	334,010	1,498
EXTERNAL SOURCES OF AID			
LOANS (STAFFORD)			
SUBSIDIZED	593	1,523,377	2,569
UNSUBSIDIZED	535	1,668,259	3,118
FPLUS	26	113,699	4,373
NCNESLP	57	53,348	936
NCHSM	5	15,000	3,000
NCSIG	71	37,800	532
NCCC GRANT	501	373,083	745
TOTAL	4,832	9,684,503	2,004

Abbreviations used in this report are:

FWS – College Work Study	FPLUS - Federal Plus	FSEOG – Federal
Supplemental Education Opportunity Grant		
HPEAA – Health Professions Education Assistance Act	HSM – Health, Science &	
Mathematics Student Loan Program		
JTPA – Job Training Partnership Act	NCCC - North Carolina Community College	
NCLTG – North Carolina Legislative Tuition Grants	NCSIG – North Carolina	
Student Incentive Grants		
NESLP – Nurse Education Scholarship Loan Program	NSP – Nurse Scholars	
Program		
NTA – Nurse Training Act	SCSF – State Contractual Scholarship Fund	

SOURCE: NCHED A-10

**WAKE TECHNICAL COMMUNITY COLLEGE
NUMBER OF GRADUATES PER YEAR LAST 5 YEARS
CUMULATIVE TOTAL**

YEAR	DEGREE	DIPLOMA	CERTIFICATE	TOTAL
2000-2001	595	95	524	1,214
2001-2002	709	107	432	1,248
2002-2003	820	142	395	1,357
2003-2004	837	107	352	1,296
2004-2005	1,011	114	414	1,539

OFFICE OF RESEARCH

JANUARY 2006

SOURCE: WAKE TECHNICAL COMMUNITY COLLEGE REGISTRAR

WAKE TECHNICAL COMMUNITY COLLEGE

ADULT HIGH SCHOOL GRADUATES LAST 5 YEARS

YEAR	NUMBER GRADUATES
2000-2001	71
2001-2002	59
2002-2003	49
2003-2004	60
2004-2005	56

GED GRADUATES LAST 5 YEARS

YEAR	NUMBER GRADUATES
2000-2001	734
2001-2002	731
2002-2003	505
2003-2004	608
2004-2005	704

OFFICE OF RESEARCH
JANUARY 2006
SOURCE: LEIS REPORT

2004 – 2005
Wake Technical Community College's
Student Population Compared with Wake County

2000 US Census Wake County		
Male	311,436	49.6%
Female	316,410	50.4%
Total	627,846	100.0%

2004 - 2005 Wake Tech					
Curriculum		Percent	Continuing Education		Percent
Male	6,895	44.9%	Male	20,687	52.2%
Female	8,453	55.1%	Female	18,887	47.8%
Total	15,348	100%		39,574	100%

Wake County – 2000 US Census		
American Indian	2,152	0.3%
Asian	21,249	3.3%
Hispanic	33,985	5.4%
Black	123,820	19.7%
White	454,544	72.3%
Total	627,846	

2004 - 2005 Wake Tech				
	Curriculum	Percent	Continuing Ed	Percent
American Indian	96	.8%	240	.9%
Asian	803	5.2%	1,726	4.3%
Black	3,753	24.4%	10,395	26.2%
Hispanic	661	4.3%	4,293	10.8%
White	9,594	62.5%	21,866	55.2%
Other	441	2.8%	1,054	2.6%
Total	15,348		39,574	

WAKE TECHNICAL COMMUNITY COLLEGE

PASSING RATES FOR LICENSURE EXAMS

2004-2005

CURRICULUM	NUMBER TESTED	PERCENT PASSED
Nursing	101	91
BLET	77	100%
Dental Assisting	13	100%
Dental Hygiene		
National Board Dental Hygiene Examination	15	100%
NC State Board Clinical Examination	15	100%
Human Services – Substance Abuse Counseling	10	100%
Medical Laboratory Technology		
American Society for Clinical Pathology	10	100%
National Cert. Agency for Laboratory Personnel	5	100%
Phlebotomy		
American Society for Clinical Pathology	8	87.5
National Certification Agency for Phlebotomy	2	100%
Medical Assisting	24	88%
Emergency Medical Technician (EMT)		
EMT	116	94%
EMT-1	27	93%
EMT-P	12	75%
Real Estate	61	67%
Radiography	24	100%
Nursing Assisting	395	100%
Therapeutic Massage	3	100%

OFFICE OF RESEARCH

MARCH 2006

SOURCE: NCCCS Critical Success Factors 2006

GRADUATES BY CURRICULUM

ARTS AND SCIENCES

GRADUATES 2004-2005

A10100	Associate in Arts Degree (for transfer to university liberal arts programs)	311
A10400	Associate in Science Degree (for transfer to university science and engineering programs)	63
A10300	Associate in General Education Degree	14
A1040D	Associate in Science – Pre Major: Engineering	0

BUSINESS EDUCATION

Associate in Applied Science Degree:

A25100	Accounting	27
A25120	Business Administration	28
A2512I	Business Administration/Electronic Commerce	3
A2512C	Business Administration/Human Resources Management	12
A55180	Criminal Justice Technology	41
A55200	Culinary Technology	25
A55220	Early Childhood Associate	27
A25240	Hotel and Restaurant Management	5
A25360	Office Systems Technology	12
A2536A	Office Systems Technology/Legal	3
A25310	Medical Office Administration	8

Diploma:

D55220A	Early Childhood Associate	20
D25360A	Office Systems Technology	2

Certificate:

C25120A	Business Administration: Sales Development	5
C2512CA	Business Administration: Human Resources Management	122
C25120B	Business Administration: Customer Service	3
C55200A	Culinary Technology	3
C55220B	Early Childhood Associate	91
C25310A	Medical Office Administration: Medical Office Specialist	15
C25360B	Office Systems Technology: Word Processing	8
C25400A	Real Estate	0
C25420	Real Estate Appraisal	0

ENGINEERING TECHNOLOGY

Associate in Applied Science Degree:

A40100	Architectural Technology	15
A40120	Automation/Robotics Technology	2
A40140	Civil Engineering Technology	13
A40160	Computer Engineering Technology	8

GRADUATES 2004-2005

A40200	Electronics Engineering Technology	10
A4020A	Electronics Engineering Technology/Instrumentation	2

A20140	Environmental Science Technology	4
A40240	Industrial Engineering Technology	1
A20180	Industrial Pharmaceutical Technology	19
A40260	Landscape Architecture Technology	6
A5032A	Manufacturing Technology/Plastics	0
A40320	Mechanical Engineering Technology	7
A40380	Surveying Technology	4
A40400	Telecommunications and Network Engineering Technology	6

Diploma:

D5032AB	Manufacturing Technology/Plastics	0
---------	-----------------------------------	---

Certificate:

C40100A	Architectural Technology: Architectural CAD	20
C40120A	Automation/Engineering Technology: Industrial Controls	1
C40160C	Computer Engineering Technology: Personal Computer Specialist	1
C40160A	Computer Engineering Technology: UNIX System Management and Programming	2
C40200A	Electronics Engineering Technology: Basic Electronics	2
C40400A	Telecommunications & Network Engineering Technology: Basic Telecommun.	1
C40400B	Telecommunications & Network Engineering Technology: Data Networking Tech.	1
C40400C	Telecommunications & Network Engineering Tech: Telecommunications Switch	1
C5032AF	Manufacturing Technology/Plastics: Plastics Injection Molding	6

COMPUTER INFORMATION SYSTEMS

Associate in Applied Science Degree:

A25260	Information Systems	9
A2526B	Information Systems: Helpdesk and Support Technology	0
A25130	Computer Programming	16
A25230	High Performance Computing	2
A25290	Internet Technologies	21
A25340	Networking Technology	30
A25430	Support Technologies	5
A30100	Advertising and Graphic Design	7

Diploma:

D25260	Information Systems (Prison)	7
--------	------------------------------	---

Certificate:

C25260A	Information Systems: Applications MOS	8
C25260F	Information Systems: Database Management	2
C25260C	Information Systems: Desktop Publishing	6
C25260G	Information Systems: Hardware Troubleshooting/Repair	9
C25260D	Information Systems: Networking	2
C25260E	Information Systems: Spreadsheet Management	1
C25130C	Computer Programming: C++ Programming	1

GRADUATES 2004-2005

C25130D	Computer Programming: Oracle Programming	9
C25130F	Computer Programming: Oracle Developer	12
C25130A	Computer Programming: Java Programming	12
C25130B	Computer Programming: Visual Basic Programming	6
C25340C	Networking Technology: CISCO Certificate	5
C25340I	Networking Technology: CISCO Certified Network Professional (CCNP)	3

HEALTH SCIENCES**Associate in Applied Science Degree:**

A45340	Emergency Medical Science	18
A45380	Human Services Technology	6
A4538A	Human Services Technology/Developmental Disabilities	0
A4538E	Human Services Technology/Substance Abuse	2
A45400	Medical Assisting	0
A45420	Medical Laboratory Technology	12
A45120	Nursing	102
A45700	Radiography	24
A45260	Dental Hygiene	15

Diploma:

D45240	Dental Assisting	11
D45400	Medical Assisting	26
D45200	Computed Tomography and Magnetic Resonance Imaging Technology	1
D45740	Surgical Technology	7
D45750	Therapeutic Massage	9

Certificate:

C45200A	Computed Tomography Technology	0
C45200B	Magnetic Resonance Imaging Technology	0
C45480	Nursing Assistant	0
C45600	Phlebotomy	14
C4538EA	Human Services Technology/Substance Abuse	3

VOCATIONAL TECHNOLOGY**Associate in Applied Science Degree:**

A35100	Air Conditioning, Heating and Refrigeration Technology	0
A35220	Electrical/Electronics Technology	8
A60240	Heavy Equipment and Transport Technology	0
A6024B	Heavy Equipment and Transport Technology/Construction Equipment Systems	12
A50240	Industrial Maintenance Technology	4
A50300	Machining Technology	0
A5030A	Machining Technology/Tool, Die and Mold Making	8
A50340	Mechanical Drafting Technology	4
A60160	Automotive Systems Technology	19

GRADUATES 2004-2005**Diploma:**

D35100A	Air Conditioning, Heating and Refrigeration Technology	13
D60160A	Automotive Systems Technology	6
D35220A	Electrical/Electronics Technology	4
D50240A	Industrial Systems Technology	1
D35300	Plumbing	4
D50420A	Welding Technology	3

Certificate:

C35100B	Air Conditioning, Heating and Refrigeration Technology	18
---------	--	----

C55120	Basic Law Enforcement Training	70
C35190B	Construction Management Technology	12
C35220C	Electrical/Electronics Technology: Commercial Wiring Methods	6
C35220B	Electrical/Electronics Technology: Residential Wiring Methods	12
C6024BB	Heavy Equipment and Transport Technology/Construction Equipment Systems: Hydraulics, Engines and Transmissions	3
C6024BC	Heavy Equipment and Transport Technology/Construction Equipment Systems: Fuel Injection, Electrical and Electronics	1
C50300B	Machining Technology	1
C5030AA	Machining Technology/Tool, Die and Mold Making: Mold Making	1
C50300C	Machining Technology: CNC Machining	2
C50340B	Mechanical Drafting Technology	3
C50420B	Welding Technology	3

2005 Average Starting Salaries

A.A.S. Degree

	Average	Starting Range	# Returns
Associate in Arts	30,900	17,000-48,000	19
Associate in General Education	41,300	31,000-48,000	3
Associate in Science	38,400	27,000-48,000	5
AA/AS/AGE			
Business Education Division			
Accounting	35,140	23,000-47,000	7
Business Administration	32,000	17,000-48,000	5
Business Administration: Human Resources Management	34,600	29,000-37,000	3
Criminal Justice	32,600	31,000-35,000	3
Culinary Technology	20,100	15,000-29,000	6
Early Childhood Associate	32,000	19,000-48,000	6
Hotel and Restaurant Management	26,000	19,000-31,000	2
Office Systems Technology	22,000		1
Office Systems Technology: Legal	22,000		1
Computer Information Systems			
Advertising and Graphic Design	24,000		1
Information Systems	40,000	31,000-45,000	3
Information Systems: Support Technologies	48,000		1
Information Systems: Networking	48,000		1
Internet Technologies	15,000		1
Networking Technology	40,000	35,000-48,000	4
Engineering Technology			
Architectural Technology	23,300	19,000-29,000	3
Automation Engineering Technology	16,000		1
Civil Engineering Technology	32,000	25,000-39,000	5
Computer Engineering Technology	40,000		1
Environmental Science Technology	28,000		1
Industrial Pharmaceutical Technology	31,000	25,000-37,000	2
Telecommunications and Network Engineering Tech	48,000		1
Health Sciences			
Associate Degree Nursing	37,000	15,000-48,000	39
Dental Hygiene	48,000	48,000	5
Emergency Medical Science	23,300	23,000-27,000	3
Human Services Technology	24,000		1
Medical Laboratory Technology	38,000	27,000-48,000	2
Radiography	40,100	28,000-48,000	14
Vocational Technology			
Automotive Systems Technology	26,000	23,000-29,000	2
Machining Technology/Tool, Die, and Mold Making	30,000		1
Mechanical Drafting Technology	26,000		1

2005 Average Starting Salaries for Diplomas

	Average	Starting Range	# Returns
Business Education Division			
Early Childhood Associate	18,000	16,000-25,000	5
Health Sciences			
Dental Assisting	30,400	23,000-37,000	9
Medical Assisting	25,000	23,000-27,000	2
Vocational Technology			
Air Conditioning, Heating, and Refrigeration Technology	32,000	29,000-35,000	2
Automotive Systems Technology	24,000		1
Plumbing	34,000		1
Welding	44,000		1

2005 Average Starting Salaries for Certificates

	Average	Starting Range	# Returns
Business Education Division			
Business Administration: Human Resources Management	43,000	38,000-48,000	3
Culinary Technology	28,000		1
Computer Information Systems			
Computer Programming: Computer Science	38,000		1
Computer Programming: Oracle Developer	48,000		1
High Performance Computing: Bioinformatics	48,000	48,000	2
Information Systems: Spreadsheet Management	24,000		1
Networking Technology: CISCO	48,000		1
Networking Technology: MCSE	48,000		1
Engineering Technology			
Architectural Technology: CAD	28,400	23,000-33,000	5
Telecommunications and Network Engineering: Basic	46,000		1
Health Sciences			
Nursing Assistant	38,000		1
Phlebotomy	26,000		1
Vocational Technology			
Air Conditioning, Heating, and Refrigeration	40,000	31,000-47,000	2
Basic Law Enforcement Training	34,000	24,000-48,000	23
Construction Management Technology	44,000		1
Electrical Electronics Technology: Commercial Wiring	26,000		1

PERCENT OF 2003-04 COLLEGE TRANSFER STUDENTS WITH A GP A
OF> = 2.0 AFTER TWO SEMESTERS AT A UNC INSTITUTION

INSTITUTION	TOTAL FTE	24 or More Semester Hours		Associate Degree Recipient		Total	
		Number	Percent >=2.0	Number	Percent >=2.0	Number	Percent >=2.0
Alamance CC	3,709	71	80.3%	23	91.3%	94	83.0%
Asheville-Buncombe TCC	5,576	60	85.0%	55	85.5%	115	85.2%
Beaufort County CC	1,837	17	82.4%	10	80.0%	27	81.5%
Bladen CC	1,452	15	80.0%	10	80.0%	25	80.0%
Blue Ridge CC	2,322	17	76.5%	12	91.7%	29	82.8%
Brunswick CC	1,332	18	61.1%	13	92.3%	31	74.2%
Caldwell CC & TI	3,644	85	89.4%	26	96.2%	111	91.0%
Cape Fear CC	6,699	164	75.6%	217	85.3%	381	81.1%
Carteret CC	1,718	30	93.3%	17	88.2%	47	91.5%
Catawba Valley CC	4,454	52	84.6%	27	85.2%	79	84.8%
Central Carolina CC	5,115	40	82.5%	14	85.7%	54	83.3%
Central Piedmont CC	12,304	246	80.9%	94	90.4%	340	83.5%
Cleveland CC	2,700	27	81.5%	**	**	27	81.5%
Coastal Carolina CC	4,238	56	89.3%	51	94.1 %	107	91.6%
College of The Albemarle	2,141	20	85.0%	37	91.9%	57	89.5%
Craven CC	2,816	53	88.7%	19	100.0%	72	91.7%
Davidson County CC	3,474	26	84.6%	15	73.3%	41	80.5%
Durham TCC	4,517	64	85.9%	39	89.7%	103	87.3%
Edgecombe CC	2,453	19	94.7%	**	**	19	94.7%
Fayetteville TCC	10,078	90	83.3%	41	97.6%	131	87.8%
Forsyth TCC	6,299	91	80.2%	17	94.1%	108	82.4%
Gaston College	4,494	49	79.6%	44	84.1%	93	81.7%
Guilford TCC	8,273	135	88.9%	37	89.2%	172	89.0%
Halifax CC	1,726	13	92.3%	**	**	13	92.3%
Haywood CC	1,792	**	**	12	75.0%	12	75.0%
Isothermal CC*	2,146	41	80.5%	11	81.8%	52	80.8%
James S Drunt CC*	1,352	31	87.1%	**	**	31	87.1%
Johnston CC	3,598	38	81.6%	21	90.5%	59	84.8%
Lenoir CC	3,103	42	71.4%	33	87.9%	75	78.7%
Martin CC	1,127	21	75.1%	11	81.8%	32	77.4%
Martinsville CC*	1,607	**	**	15	93.3%	15	93.3%
McDowell TCC	1,300	18	83.3%	**	**	18	83.3%
Mitchell CC	2,211	23	87.0%	25	88.0%	48	87.5%
Montgomery CC*	829	**	**	**	**	**	*
Nash CC*	2,359	56	78.6%	**	**	56	78.6%
Pamlico CC	528	**	**	**	**	**	*
Piedmont CC	2,356	17	76.5%	**	**	17	76.5%
Pitt CC	5,363	109	80.7%	28	78.6%	137	80.3%
Randolph CC	2,512	23	91.3%	**	**	23	91.3%
Richmond CC	1,957	13	69.2%	**	**	13	69.2%
Roanoke-Chowan CC	994	18	66.7%	**	**	18	66.7%
Robeson CC	3,514	15	100.0%	**	**	15	100.0%
Rockingham CC	2,103	29	86.2%	24	83.3%	53	84.9%
Rowan-Cabarrus CC	5,478	59	83.1 %	20	90.0%	79	84.8%
Sampson CC	1,760	23	73.9%	**	**	23	73.9%
Sandhills CC	3,550	26	69.2%	41	92.7%	67	83.6%
South Piedmont	2,034	14	85.7%	**	**	14	85.7%
Southeastern CC	2,417	30	80.0%	15	93.3%	45	84.4%
Southwestern CC	2,179	23	95.7%	30	86.7%	53	90.6%
Stanly CC	2,125	13	69.2%	10	80.0%	23	73.9%
Surry CC*	3,079	87	85.1 %	74	95.9%	161	90.1%
Tn-County CC	1,106	10	90.0%	12	83.3%	22	86.3%
Vance-Granville CC	4,371	34	85.3%	12	83.3%	46	84.8%
Wake TCC	10,377	296	88.2%	113	92.0%	409	89.2%
Wayne CC	3,524	60	90.0%	20	90.0%	80	90.0%
Western Piedmont CC*	2,930	64	82.8%	47	89.4%	111	85.6%
Wilkes CC	2,961	41	87.8%	46	95.7%	87	92.0%
Wilson TCC	2,220	18	77.8%	**	**	18	77.8%
System Totals	194,235	2,750	83.3%	1,438	88.6%	4,188	85.3%

*Includes data from private colleges and universities. **Number too small to report.
Italics: 3-year total number of students and 3-year percentage.

CONTINUING EDUCATION

WAKE TECHNICAL COMMUNITY COLLEGE

FULL-TIME EQUIVALENCY (FTE) DEFINITIONS

- CURRICULUM FTE:** Includes College Transfer, General Education, Technical, and Vocational Education.
- EXTENSION FTE:** Includes Academic, Adult High School, Avocational, Occupational, Practical Skills, ABE, Compensatory Education, Learning Lab (ILC), New and Expanding Industry, Human Resource Development, and Self-Supporting.
- BASIC SKILLS (LITERACY) FTE** - Includes Adult High School, ABE, and Compensatory Education
- HUMAN RESOURCES DEVELOPMENT FTE** - Includes Human Resources
- SMALL BUSINESS CENTER FTE** - Includes New and Expanding Industry, and Self-Supporting.
- REGULAR BUDGET EXTENSION** - Includes Adult High School, Occupational, Adult Basic Education, and Compensatory Education.
- NON-REGULAR BUDGET EXTENSION** - Includes Learning Laboratory, New and Expanding Industry, Human Resource Development, And Self-Supporting.
- COMMUNITY SERVICE** - Includes Academic, Avocational, Practical Skills, and Cultural and Civic Activities.
- OCCUPATIONAL** - Includes Occupational only. Occupational Extension Programs consist of single courses, complete in themselves, designed for the specific purposes of training an individual for employment, upgrading skills of persons presently employed, and retraining others for new employment in occupational fields.
- SELF-SUPPORTING** - Includes courses which the College may provide at the request of the community but for which the College receives no budgetary credit. The cost of such activities are borne exclusively by the participants or some contracting agency.
- SPECIAL NOTE:** Wake Tech and the North Carolina Community College System changed from the Quarter System to the Semester System beginning with Fall Semester 1997. The Summer of 1997 was a period of transition. Therefore, enrollment and FTE numbers for the Summer of 1997 were diminished.

When comparing annual enrollment and FTE figures for the Quarter System with the Semester System, you must remember to average the Quarter System numbers and sum the Semester System numbers.

Office of Research

PROGRESS OF BASIC SKILLS
STUDENTS, 2004-2005

INSTITUTION	SYSTEM EFF	TOTAL SERVED IN LITERACY	COMPLETED A LEVEL	PROGRESSING SAME LEVEL	MOVED TO A HIGHER LEVEL	EXIT NON- COMPETERD	COMPOSITE PROGRESS MEASURE
Alamance CC	3,709	3,078	9%	60%	22%	10%	90%
Asheville-Buncombe TCC	5,576	3,709	5%	47%	28%	20%	80%
Beaufort County CC	1,837	1,055	7%	47%	26%	20%	80%
Bladen CC	1,452	633	14%	48%	23%	15%	85%
Blue Ridge CC	2,322	1,350	13%	53%	18%	16%	84%
Brunswick CC	1,332	958	3%	63%	28%	7%	93%
Caldwell CC & TI	3,644	2,245	12%	60%	14%	13%	87%
Cape Fear CC	6,699	3,201	5%	52%	22%	22%	78%
Carteret CC	1,718	854	13%	45%	21%	22%	78%
Catawba Valley CC	4,454	3,292	13%	61%	14%	12%	88%
Central Carolina CC	5,115	4,634	13%	61%	17%	9%	91%
Central Piedmont CC	12,304	11,584	10%	41%	26%	23%	77%
Cleveland CC	2,700	676	14%	45%	27%	14%	86%
Coastal Carolina CC	4,238	4,234	5%	50%	35%	11%	89%
College of The Albemarle	2,141	2,762	10%	45%	19%	26%	74%
Craven CC	2,816	1,668	7%	53%	22%	17%	83%
Davidson County CC	3,474	3,024	12%	42%	35%	11%	89%
Durham TCC	4,517	4,384	5%	54%	18%	23%	77%
Edgecombe CC	2,453	1,979	3%	42%	25%	30%	70%
Fayetteville TCC	10,078	6,540	7%	53%	19%	20%	80%
Forsyth TCC	6,299	5,352	7%	51%	28%	15%	85%
Gaston College	4,494	2,621	10%	35%	36%	18%	82%
Guilford TCC	8,273	5,878	6%	44%	25%	25%	75%
Halifax CC	1,726	1,237	9%	47%	22%	21%	79%
Haywood CC	1,792	690	9%	47%	24%	21%	79%
Isothermal CC	2,146	1,470	8%	60%	21%	12%	88%
James Sprunt CC	1,352	898	11%	57%	12%	20%	80%
Johnston CC	3,598	1,693	11%	53%	13%	23%	77%
Lenoir CC	3,103	2,156	7%	57%	15%	21%	79%
Martin CC	1,127	802	9%	53%	31%	6%	94%
Mayland CC	1,607	1,121	14%	45%	24%	17%	83%
McDowell TCC	1,300	989	7%	43%	25%	25%	75%
Mitchell CC	2,211	2,323	13%	47%	16%	25%	75%
Montgomery CC	829	545	7%	37%	26%	30%	70%
Nash CC	2,359	1,798	3%	56%	22%	18%	82%
Pamlico CC	528	333	8%	32%	38%	23%	77%
Piedmont CC	2,356	1,067	13%	44%	19%	24%	76%
Pitt CC	5,363	2,843	6%	54%	15%	25%	75%
Randolph CC	2,512	2,045	5%	65%	22%	8%	92%
Richmond CC	1,957	1,844	11%	48%	25%	16%	84%
Roanoke-Chowan CC	994	740	14%	54%	11%	21%	79%
Robeson CC	3,514	2,870	5%	52%	21%	22%	78%
Rockingham CC	2,103	1,670	9%	37%	26%	29%	71%
Rowan-Cabarrus CC	5,478	3,457	16%	45%	20%	19%	81%
Sampson CC	1,760	1,134	11%	45%	22%	22%	78%
Sandhills CC	3,550	1,673	10%	41%	26%	22%	78%
South Piedmont CC	2,034	2,228	10%	46%	32%	12%	88%
Southeastern CC	2,417	1,475	14%	48%	22%	16%	84%
Southwestern CC	2,179	1,678	8%	36%	35%	21%	79%
Stanly CC	2,125	1,507	12%	52%	16%	20%	80%
Surry CC	3,079	1,654	8%	42%	25%	25%	75%
Tri-County CC	1,106	472	13%	48%	21%	17%	83%
Vance-Granville CC	4,371	2,679	16%	43%	17%	24%	76%
Wake TCC	10,377	7,807	6%	49%	26%	19%	81%
Wayne CC	3,524	3,087	14%	40%	26%	19%	81%

Western Piedmont CC	2,930	2,828	9%	50%	16%	24%	76%
Wilkes CC	2,961	1,666	3%	53%	25%	19%	81%
Wilson TCC	2,220	1,829	6%	60%	20%	14%	86%
System Totals	194,235	140,019	9%	49%	23%	19%	81%

**WAKE TECHNICAL COMMUNITY COLLEGE
EXTENSION FTE (INCLUDES BASIC SKILLS, LEARNING LAB,
OCCUPATIONAL EXTENSION, FOCUSED INDUSTRY TRAINING,
HUMAN RESOURCES DEVELOPMENT, NEW & EXPANDING
INDUSTRY, SMALL BUSINESS CENTER, JOB TRAINING
PARTNER, & COMMUNITY SERVICE)**

YEAR	FALL	SPRING	SUMMER
1998-1999	815	870	592
1999-2000	864	763.7	608.6
2000-2001	816	815.1	513
2001-2002	861.2	862	563
2002-2003	921	897	561
2003-2004	935	930	599
2004-2005	996	954.4	693

HRD is not Self-Support

JANUARY 2006

SOURCE: WAKE TECHNICAL COMMUNITY COLLEGE REGISTRAR

WAKE TECHNICAL COMMUNITY COLLEGE
BASIC SKILLS FTE (INCLUDES ADULT HIGH SCHOOL, ABE, COMPENSATORY
EDUCATION)

LAST 5 YEARS

<i>YEAR</i>	<i>FALL</i>	<i>SPRING</i>	<i>SUMMER</i>
2000-2001	297	343.2	212
2001-2002	369.7	381.6	241
2002-2003	357	342.1	226.1
2003-2004	362	367.3	237.8
2004-2005	394	378.7	238

JANUARY 2006

SOURCE: WAKE TECHNICAL COMMUNITY COLLEGE REGISTRAR

WAKE TECHNICAL COMMUNITY COLLEGE
SELF-SUPPORTING FTE (INCLUDES: OCCUPATIONAL EXTENSION RECEIPT,
FOCUSED INDUSTRY TRAINING, SMALL BUSINESS CENTER, JOB TRAINING
PARTNERSHIP, LEARNING LAB, COMMUNITY SERVICE SELF-SUPPORTING)
LAST 5 YEARS

<i>YEAR</i>	<i>FALL</i>	<i>SPRING</i>	<i>SUMMER</i>
<i>2000-2001</i>	<i>31</i>	<i>40.4</i>	<i>19.2</i>
<i>2001-2002</i>	<i>38.3</i>	<i>36.6</i>	<i>27</i>
<i>2002-2003</i>	<i>51</i>	<i>50.3</i>	<i>23.8</i>
<i>2003-2004</i>	<i>45</i>	<i>57.2</i>	<i>30.6</i>
<i>2004-2005</i>	<i>44</i>	<i>42.7</i>	<i>40</i>

NEW AND EXPANDING INDUSTRY FTE
LAST 5 YEARS

<i>YEAR</i>	<i>FALL</i>	<i>SPRING</i>	<i>SUMMER</i>
<i>2000-2001</i>	<i>91</i>	<i>48.6</i>	<i>24.2</i>
<i>2001-2002</i>	<i>25.5</i>	<i>6.5</i>	<i>3</i>
<i>2002-2003</i>	<i>14</i>	<i>6.6</i>	<i>3.7</i>
<i>2003-2004</i>	<i>5</i>	<i>4.6</i>	<i>3.3</i>
<i>2004-2005</i>	<i>8</i>	<i>21.5</i>	<i>50</i>

JANUARY 2006

SOURCE: WAKE TECHNICAL COMMUNITY COLLEGE REGISTRAR

WAKE TECHNICAL COMMUNITY COLLEGE

CONTINUING EDUCATION SERVICES

CORRECTIONS EDUCATION

Year	2000	2001	2002	2003	2004	2005
Classes	346	357	372	407	415	397
Students	3,942	4,344	4,036	4,497	4,263	4,387

EVENING DIVISION (Non-Credit)

Year	2000	2001	2002	2003	2004	2005
Classes	1,033	992	1,255	1,511	1,435	1,478
Students	14,683	13,813	14,633	14,442	13,969	12,857

FIRE SERVICES TRAINING

Year	2000	2001	2002	2003	2004	2005
Classes	504	540	551	565	760	648
Students	7,296	8,119	8,421	7,924	10,272	9,481

LAW ENFORCEMENT TRAINING

Year	2000	2001	2002	2003	2004	2005
Classes	340	346	386	492	605	515
Students	4,579	4,681	6,372	9,081	12,486	12,510

WORKPLACE BASIC SKILLS (ABE/GED, WORKPLACE SPECIFIC, AND ESL)

Year	2000	2001	2002	2003	2004	2005
Classes	18	16	23	11	9	8
Employers	16	15	21	9	7	6
Students	477	387	483	247	172	192

SOURCE: WAKE TECHNICAL COMMUNITY COLLEGE CONTINUING
EDUCATION, JANUARY 2006

EMPLOYEES

WAKE TECHNICAL COMMUNITY COLLEGE
FULL-TIME EMPLOYEES STATISTIC USING EEOC
CLASSIFICATION

DATA EFFECTIVE NOVEMBER 2005

FULL-TIME ANNUAL	MALES	%	FEMALES	%	TOTAL
EXECUTIVE/MANAGERIAL	15	62.5	9	37.5	24
INSTRUCTIONAL/FACULTY	160	40.6	234	59.3	394
PROFESSIONAL (NON-FACULTY)	44	33.1	89	66.9	133
SECRETARIAL/CLERICAL	6	6.1	93	93.9	99
TECHNICAL/PARPROFESSIONAL	11	28.3	28	71.7	39
SKILLED CRAFTS	3	100	0	0	3
SERVICE/MAINTENANCE	6	100	0	0	6
TOTAL	245	35.1	453	64.9	698

OFFICE OF RESEARCH
JANUARY 2006

SOURCE: WAKE TECHNICAL COMMUNITY COLLEGE ADMINISTRATIVE SERVICES (IPEDS)

WAKE TECHNICAL COMMUNITY COLLEGE

PART-TIME EMPLOYEES USING EEOC CLASSIFICATION BY SEX

DATA EFFECTIVE NOVEMBER 2005

EEOC CLASSIFICATION	MALES	FEMALES	TOTAL
EXECUTIVE/MANAGERIAL	0	0	0
INSTRUCTIONAL/FACULTY	279	385	664
PROFESSIONAL (NON-FACULTY)	13	32	45
SECRETARIAL/CLERICAL	7	28	35
TECHNICAL/PARPROFESSIONAL	10	19	29
SKILLED CRAFTS	0	0	0
SERVICE/MAINTENANCE	0	0	0
TOTAL	309	464	773

OFFICE OF RESEARCH

JANUARY 2006

SOURCE: WAKE TECHNICAL COMMUNITY COLLEGE ADMINISTRATIVE SERVICES (IPEDS)

WAKE TECHNICAL COMUNITY COLLEGE

STAFF INFORMATION REPORT

DATE EFFECTIVE: NOVEMBER 2005

CATEGORY	FULL-TIME	PART-TIME
Exec/Admin/Managerial	24	0
Instructional	394	664
Professional	133	45
Clerical	99	35
Tech/Paraprofessional	39	29
Skilled Crafts	3	0
Service Maintenance	6	0
Totals	698	773

OFFICE OF RESEARCH

JANUARY 2006

SOURCE: WAKE TECHNICAL COMMUNITY COLLEGE ADMINISTRATIVES
SERVICES (IPEDS)

FACILITIES

WAKE TECHNICAL COMMUNITY COLLEGE

PERMANENT FACILITIES

ACADEMIC YEAR	GROSS SQUARE FEET	LEASED
1996	404,110	22,260
1997	509,779	22,260
1998	509,779	22,260
1999	509,779	22,260
2000	509,779	22,260
2001	509,779	22,260
2002	492,979	37,223
2003	733,078	37,223
2004	736,397	45,513
2005	746,662	46,050

(Ownership of Buildings: Table 18)

SOURCE: FACILITIES INVENTORY AND UTILIZATION STUDY, STATE OF NORTH CAROLINA, THE UNIVERSITY OF NORTH CAROLINA COMMISSION ON HIGHER EDUCATION FACILITIES, CHAPEL HILL, NORTH CAROLINA, OCTOBER 2005

Facilities Inventory and Utilization Study 2004

The primary purpose of this research document is to provide higher education administrators with a detailed statistical profile of the facilities of their own campuses and of other colleges and universities in North Carolina (Facilities Inventory and Utilization Study, 2005).

Capacity/Enrollment Ratio

The capacity/enrollment ratio, often referred to as the C/E ratio, is the amount of instructional and library space on campus divided by the total fall term student clock hours of that institution. In analyzing and comparing the capacity/enrollment ratios, it should be kept in mind that a relatively low ratio generally indicates a high level of space utilization.

Capacity/Enrollment Ratio (Table 1)

	2004	2003	2002	2001	2000
Wake Tech CC	2.67*	2.85	2.28	2.28	2.21
Central Piedmont CC	3.85	3.39	3.59	3.34	3.78
Fayetteville CC	3.41	2.95	3.11	3.24	3.49
Guilford CC	3.49	3.33	3.78	3.95	4.88
System Average	3.78	3.61	3.66	3.77	4.04

* Fifth lowest figure among the 58 NC Community Colleges in 2004: 2.67

Facilities Inventory and Utilization Study 2004
State of North Carolina Higher Education Comprehensive Planning Program
The University of North Carolina Commission on Higher Education Facilities Chapel Hill,
North Carolina, October 2005

Square Feet of Academic Facilities Per FTE Student

The ratio of an institution's square footage of academic facilities to its full-time equivalent enrollment represents an important index of the instructional utilization of campus facilities. In this table, the FTE enrollments which are reported for the institutions of the Community College System include only credit enrollment generated in all inventoried space (on-campus only = Main Campus, Adult Education Center, and the Health Education Campus)

Square Feet of Academic Facilities Per FTE Student (Table 2)

	2004	2003	2002	2001	2000
Wake Tech CC	61*	61	52	52	54
Central Piedmont CC	93	79	82	110	109
Fayetteville CC	93	81	88	89	91
Guilford CC	87	86	92	90	95
System Average	89	84	86	91	98

* Wake Tech CC had the fourth lowest figures for 2004: 61

Facilities Inventory and Utilization Study 2004

State of North Carolina Higher Education Comprehensive Planning Program

The University of North Carolina Commission on Higher Education Facilities Chapel Hill,
North Carolina, October 2005

Average Weekly Room Hours of Instruction in Classroom

Is the average number of hours that an institution's classrooms are used for instructional purposes each week.

For the purpose of this study, a classroom is defined as a room used to conduct classes that do not require special-purpose equipment for student use.

Daytime utilization is based on all classes with beginning times between and including 5:00 a.m. and 4:59 p.m.; nighttime utilization is based on all other classes. The "All Hours" section in Table 3 indicates the sum of the daytime and nighttime figures for the last five years.

Average Weekly Room Hours of Instruction in Classrooms (Table 3)

	Daytime Hours	Nighttime Hours	All Hours				
			2004	2003	2002	2001	2000
Wake Tech CC	23.6	5.4	29.0	27.0	31.9	28.8	29.2
Central Piedmont CC	14.9	5.2	20.1	21.7	21.8	22.8	21.2
Fayetteville CC	15.4	5.2	20.6	20.5	21.4	23.3	22.3
Guilford CC	15.2	4.8	20.0	21.7	20.5	18.5	13.9
System Average	15.2	5.3	20.5	20.8	20.6	20.9	20.4

*Wake Tech CC had the third highest figure for 2004: 29.0 (ALL HOURS)

Facilities Inventory and Utilization Study 2004
State of North Carolina Higher Education Comprehensive Planning Program
The University of North Carolina Commission on Higher Education Facilities Chapel Hill,
North Carolina, October 2005

Average Weekly Room Hours of Instruction in Class Laboratories

Is the average number of hours that an institution's class laboratories are used for instructional purposes each week.

For purposes of this study, a class laboratory is defined as a room used primarily for regularly scheduled classes that require special-purpose equipment for student participation, experimentation, observation or practice in a field of study.

Daytime utilization is based on all classes with beginning times between and including 5:00 a.m. and 4:59 p.m.; nighttime utilization is based on all other classes. The "All Hours" section in Table 4 indicates the sum of the daytime and nighttime figures for the last five years.

Average Weekly Room Hours of Instruction in Class Laboratories (Table 4)

	Daytime Hours	Nighttime Hours	All Hours				
			2004	2003	2002	2001	2000
Wake Tech CC	17.3	6.0	23.3*	23.8	25.8	28.5	30.0
Central Piedmont CC	13.4	4.6	18.0	18.7	21.2	17.7	18.4
Fayetteville CC	12.6	3.2	15.8	18.5	17.3	18.1	16.9
Guilford CC	11.6	3.2	14.8	15.1	15.2	15.1	13.9
System Average	13.2	4.2	17.4	18.1	18.0	18.1	18.0

*Wake Tech CC had the sixth highest figure for 2004: 23.3 (ALL HOURS)

Facilities Inventory and Utilization Study 2004
State of North Carolina Higher Education Comprehensive Planning Program
The University of North Carolina Commission on Higher Education Facilities Chapel Hill,
North Carolina, October 2005

Average Weekly Use of Student Stations in Classrooms

The average number of hours each week that each classroom student station (seat) is used.

Average Weekly Use of Student Stations in Classrooms (Table 5)

	Daytime Hours	Nighttime Hours	All Hours				
			2004	2003	2002	2001	2000
Wake Tech CC	15.4	3.3	18.7*	16.6	21.3	18.0	18.4
Central Piedmont CC	9.3	3.0	12.3	13.8	12.6	13.1	10.8
Fayetteville CC	7.9	2.0	9.9	9.8	11.6	11.3	11.1
Guilford CC	10.8	3.2	14.0	15.5	13.6	13.1	9.6
System Average	9.4	2.8	12.2	12.5	12.6	12.1	11.2

*Wake Tech CC had the fourth highest figure for 2004: 18.7

Facilities Inventory and Utilization Study 2004

State of North Carolina Higher Education Comprehensive Planning Program

The University of North Carolina Commission on Higher Education Facilities Chapel Hill,
North Carolina, October 2005

Average Weekly Use of Student Stations in Class Laboratories

The average number of hours each week that each class lab student station is used.

Average Weekly Use of Student Stations in Class Laboratories (Table 6)

	Daytime Hours	Nighttime Hours	All Hours				
			2004	2003	2002	2001	2000
Wake Tech CC	11.9	3.7	15.6*	15.7	18.4	21.3	22.9
Central Piedmont CC	7.3	2.7	10.0	11.0	10.7	9.3	8.5
Fayetteville CC	7.0	1.4	8.4	10.8	10.1	10.4	8.9
Guilford CC	8.8	2.0	10.8	11.1	10.3	11.1	10.7
System Average	8.4	2.3	10.7	11.6	11.6	11.2	10.6

* Wake Tech CC had the fifth highest figure for 2004: 15.6

Facilities Inventory and Utilization Study 2004

State of North Carolina Higher Education Comprehensive Planning Program

The University of North Carolina Commission on Higher Education Facilities Chapel Hill,
North Carolina, October 2005

Percent Student Station Utilization Classrooms and Class Laboratories

Percent student station utilization indicates the average percentage of student stations (seats) that are occupied when classrooms or class laboratories are in use.

Percent Student Station Utilization Classrooms and Class Laboratories (Table 7)

Classrooms

CLASSROOMS	2004	2003	2002	2001	2000	1999
Wake Tech CC	65.6*	63.8	67.1	63.9	63.6	64.2
Central Piedmont CC	60.9	62.9	56.9	54.9	47.5	48.1
Fayetteville CC	42.8	43.8	48.7	45.1	46.1	49.9
Guilford CC	65.7	66.2	62.0	66.6	61.1	62.6
System Average	55.9	56.8	57.1	55.2	52.0	53.1

* Wake Tech CC has the third highest classroom figure for 2004: 65.6

Class Laboratories

LABORATORIES	2004	2003	2002	2001	2000	1999
Wake Tech CC	62.2*	61.9	66.1	68.7	70.1	72.2
Central Piedmont CC	51.4	56.0	49.1	48.9	43.9	49.7
Fayetteville CC	51.4	54.3	55.7	54.2	50.5	53.4
Guilford CC	65.5	64.6	60.5	62.4	65.8	61.7
System Average	56.5	58.8	58.5	56.3	53.9	54.8

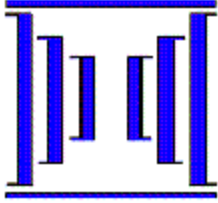
* Wake Tech CC has the thirteenth highest figure for Class Laboratories for 2004: 62.2

Facilities Inventory and Utilization Study 2004

State of North Carolina Higher Education Comprehensive Planning Program

The University of North Carolina Commission on Higher Education Facilities Chapel Hill,
North Carolina, October 2005

COMPARISONS



North Carolina Community College System

Curriculum/Continuing Education Information System

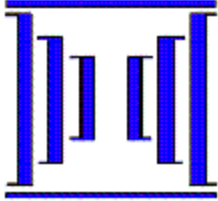
Curriculum and Continuing Education Student Enrollment by College

Table 1 Annual

Reporting Year: **2004 - 2005**

Last Refresh on : **10/20/2005**

College Name	Curriculum					Continuing Education											Total
	Assoc	Dipl	Cert	Trans	Curr Sub	Basic Skills	Learn Lab	Occ RB	Occ Ext SS	FIT	HRD	NIT/EIT	SBC	Comm Svc	Non Occ SS	CE Sub	
Alamance CC	4,155	437	467	1,327	6,243	3,078		3,989	789	35	515	132	416	887	634	9,948	15,686
Asheville-Buncombe TCC	4,570	389	255	4,004	9,020	3,577		7,858	1,033	104	2,192	372	704	1,346	1,421	17,308	25,305
Beaufort County CC	1,459	158	74	457	2,124	1,072		3,279	171	31	269	48	507	172	729	6,008	7,876
Bladen CC	1,513	124	76	196	1,885	660		1,322		36	1,013	27	118	95	476	3,447	4,972
Blue Ridge CC	1,769	178	240	730	2,842	1,378	43	5,107	292	221	1,953	230	272	3	4,361	12,673	14,936
Brunswick CC	850	266	117	133	1,325	974		2,596	530	21	424	246	138	230	1,111	5,798	6,993
Caldwell CC and TI	2,575	1,030	378	1,121	4,990	2,226	12	3,916	438	46	848	127	884	129	2,659	10,655	14,941
Cape Fear CC	6,851	520	773	1,500	9,423	3,247	2,735	7,565	221	40	1,945	898	349	523	3,786	20,384	26,536
Carteret CC	1,752	144	117	441	2,401	817		2,760	678	39	330		1,064	182	268	5,869	7,952
Catawba Valley CC	4,664	368	335	1,540	6,806	3,181		4,137	2,945	341	1,420	106	390	653	2,853	15,024	21,084
Central Carolina CC	3,661	447	1,046	1,471	6,439	4,500		6,903	438	76	468	235		776	348	13,349	19,062
Central Piedmont CC	13,485	552	562	10,216	24,182	11,846		10,139	10,585	63	571	907			3,132	35,487	57,384
Cleveland CC	2,321	544	269	1,328	4,342	750		2,946	190	33	1,431	135	102	238	1,112	6,676	10,628
Coastal Carolina CC	4,850	296	215	861	6,103	5,149		9,116	949	405	536	335	675	403	2,761	18,748	23,770
College of the Albemarle	2,001	164	113	808	3,046	2,732		3,387	41	26	122	7	1,366		1,013	8,420	11,028
Craven CC	3,423	175	82	1,066	4,651	1,656		3,962	269	109	439	520	297	478	1,066	8,287	12,518
Davidson County CC	2,873	462	437	687	4,326	3,130		6,881	597	323	447	72	656		925	12,258	16,019
Durham TCC	4,756	271	234	3,168	8,165	4,442		8,325	1,050	98	3,014	1,008			553	17,790	25,230
Edgecombe CC	2,347	299	39	1,065	3,698	1,965		2,115		31	1,764	34	410	146	63	5,661	9,138
Fayetteville TCC	9,369	659	185	4,792	14,499	6,395		11,002	4,334	54	1,804		544	1,962	382	24,533	37,620
Forsyth TCC	7,141	510	686	1,643	9,850	5,290		9,593	2,756	641	2,229	338	887	499	1,955	22,882	31,486
Gaston College	5,455	353	363	1,345	7,416	3,127		4,553	1,934	68	3,075	576	209	94	2,010	14,699	21,440
Guilford TCC	10,222	476	37	1,792	12,381	5,248		8,596	1,525	212	1,830	21	545	671	5,812	23,330	34,750
Halifax CC	1,584	194	288	232	2,261	1,254		2,151	314	103	103	30	723	213	56	4,731	6,739
Haywood CC	1,558	105	222	831	2,673	692	874	1,973		20	326	161	331	143	287	4,528	6,281
Isothermal CC	2,113	251	129	600	3,011	1,464		1,997		75	738	78	264		3,950	8,022	10,512
James Sprunt CC	918	316	163	634	1,960	930	116	2,285	7		227		605	153	2,396	6,444	8,034
Johnston CC	2,794	228	883	1,972	5,766	1,689		4,368	608	169	240	293	810	260	1,174	8,997	14,247
Lenoir CC	2,519	114	178	824	3,563	2,231		4,772		49	1,120	306	710	195	2,016	10,666	13,619
Martin CC	826	85	49	339	1,278	801		1,329	77	7	422		134	343		2,928	4,082
Mayland CC	764	181	356	626	1,865	1,099		2,248	61	6	820	35	342	18	710	4,968	6,415
McDowell TCC	1,025	253	154	334	1,724	947		3,178	1,097	165	865	173	138	112	779	7,158	8,551
Mitchell CC	2,114	290	174	738	3,248	2,272		2,811	846	112	1,416	249	332	79	1,023	8,520	11,341



North Carolina Community College System

Curriculum/Continuing Education Information System

Curriculum and Continuing Education Student Enrollment by College

Table 1 Annual

Reporting Year: **2004 - 2005**

Last Refresh on : **10/20/2005**

College Name	Curriculum					Continuing Education											Total
	Assoc	Dipl	Cert	Trans	Curr Sub	Basic Skills	Learn Lab	Occ RB	Occ Ext SS	FIT	HRD	NIT/EIT	SBC	Comm Svc	Non Occ SS	CE Sub	
Montgomery CC	737	99	156	327	1,284	523		1,385	308	11	93	38	215	54	61	2,570	3,643
Nash CC	2,445	116	262	1,086	3,860	1,775	26	3,774	671	95	855	16	573	358	336	7,984	11,469
Pamlico CC	282	41	131	97	545	349		580			110		185	162	32	1,289	1,738
Piedmont CC	1,584	250	675	1,121	3,579	1,793		2,189	506	58	1,010	99	204	98		5,573	8,741
Pitt CC	6,196	294	369	1,898	8,474	2,731		3,412	2,235	112	1,434	223	221	79	60	9,941	17,584
Randolph CC	1,790	586	102	587	3,015	1,925		3,788	649	687	676	193	356	247	799	8,880	11,550
Richmond CC	1,794	56	113	254	2,167	2,190		1,741	82	112	830	279	331			5,076	7,056
Roanoke Chowan CC	990	101	105	219	1,402	747		1,058	2	18	79		294	179	76	2,345	3,637
Robeson CC	2,379	141	222	335	3,029	2,921		5,002	994	406	2,484	246	298	312	306	11,752	14,288
Rockingham CC	1,587	220	580	548	2,838	1,596		3,269	582	153	571	284	578	288	2,112	8,754	10,956
Rowan-Cabarrus CC	4,602	1,639	450	1,075	7,552	3,473		6,430	1,641	105	458	1,010	422	167	457	12,478	19,254
Sampson CC	1,374	150	136	344	1,975	1,300		2,050	106	33	1,315	158	244	186	721	5,590	7,149
Sandhills CC	3,533	118	167	917	4,659	1,663		4,331	682	35	395	147	815	282	473	8,254	12,455
Southeastern CC	1,798	220	238	699	2,857	1,490		4,134	35	22	1,035	28	1,148	893	19	7,876	10,105
South Piedmont CC	1,453	202	214	660	2,465	2,138		2,345	658	379	1,555		728	60	493	7,727	9,847
Southwestern CC	1,860	77	178	623	2,703	1,733		3,013	505	22	641	14	259		343	5,609	8,139
Stanly CC	1,666	106	349	764	2,817	1,484		3,582	427	47	400		227	95		6,000	8,420
Surry CC	2,402	820	189	1,274	4,541	1,645		4,125	111	417	936	142	579	313	906	8,323	12,297
Tri-county CC	1,014	88	86	329	1,499	438		1,630	675	5	74	123	408	464	177	3,726	4,945
Vance-Granville CC	3,962	609	392	992	5,824	2,640		5,821	106	692	1,037	906	407	537	45	11,344	16,421
Wake TCC	13,167	663	1,181	2,337	17,015	8,132	3,695	18,355	2,178	663	2,359	1,395	1,332	3,532	303	39,574	52,303
Wayne CC	3,400	196	188	829	4,523	2,980	331	4,162	17	204	1,579	45	678	116	699	9,728	13,717
Western Piedmont CC	2,772	131	191	855	3,856	2,845	155	4,297	1,118	115	824	87	174	324	1,369	10,412	13,792
Wilkes CC	2,408	165	54	909	3,474	1,653		5,494	477	1,050	1,432	334	561	466	39	10,552	13,422
Wilson Technical CC	2,033	197	162	677	3,018	1,891		4,658	821	77	183	99	153	448	80	7,987	10,705
System Total	182,661	18,074	16,527	67,409	274,403	139,711	7,986	230,857	49,845	9,265	56,805	13,534	26,100	20,608	61,514	568,080	797,341

****Unduplicated headcounts are reported in each cell. Rows and columns will not add up.****

NORTH CAROLINA COMMUNITY COLLEGE SYSTEM
Curriculum Student Information II
Student Enrollment by Race and Gender by College
(Unduplicated Headcount) ANNTBL8 – II Reporting Year: 2004-2005

	Amlnd Fern	Amlnd Male	Asian Fern	Asian Male	Black Fern	Black Male	Hisp Fern	Hisp Male	Other Fern	Other Male	White Fern	White Male	Grand Total
Alamance CC	18	5	56	40	1,062	335	108	66	216	122	2,628	1,590	6,246
Asheville-Buncombe TCC	23	17	46	33	355	220	80	68	182	125	4,583	3,290	9,022
Beaufort County CC		3	6		575	186	17	15	9	8	794	511	2,124
Bladen CC	228	12	3	2	640	162	12	12	23	9	555	228	1,886
Blue Ridge CC	5	4	12	14	115	30	48	39	23	8	1,563	982	2,843
Brunswick CC	9	3	6	2	223	51	14	6	11	4	696	300	1,325
Caldwell CC and TI	4	6	24	16	123	99	31	34	42	50	2,489	2,072	4,990
Cape Fear CC	34	29	44	33	868	495	95	86	150	136	3,921	3,532	9,423
Carteret CC	13	2	18	5	176	57	22	8	48	22	1,360	670	2,401
Catawba Valley CC	15	4	207	180	415	257	123	72	29	19	3,434	2,053	6,808
Central Carolina CC	39	17	28	22	1,105	562	168	110	63	43	2,606	1,677	6,440
Central Piedmont CC	72	35	621	539	5,183	2,386	643	494	347	262	7,368	6,239	24,189
Cleveland CC	6	7	17	18	781	291	26	16	21	17	1,969	1,174	4,343
Coastal Carolina CC	46	24	134	68	891	420	317	196	20	9	2,595	1,390	6,110
College of the Albemarle	20	7	8	7	566	180	25	22	25	21	1,442	724	3,047
Craven CC	14	9	44	28	736	301	93	88	67	41	1,882	1,349	4,652
Davidson County CC	18	13	46	29	477	193	41	28	17	20	2,265	1,180	4,327
Durham TCC	23	8	255	185	2,679	1,005	196	116	113	87	2,054	1,448	8,169
Edgecombe ee	20		8	4	1,694	482	20	20	13	11	970	457	3,699
Fayetteville Tee	268	95	172	130	4,033	1,641	701	439	386	240	4,013	2,387	14,505
Forsyth Tee	40	25	81	39	1,877	750	167	102	114	83	4,053	2,525	9,856
Gaston College	23	9	44	30	1,010	275	104	70	74	52	3,841	1,890	7,422
Guilford Tee	36	25	200	152	2,797	1,556	149	139	153	94	3,637	3,445	12,383
Halifax ee	30	15	7	2	916	380	9	7	6	6	597	286	2,261
Haywood ee	18	10	5	4	28	11	14	13	5	3	1,469	1,094	2,674
Isothermal ee	10	4	9	3	346	122	25	14	26	21	1,523	911	3,014
James Sprunt ee	5	3	3		566	216	35	29	12	6	739	348	1,962
Johnston ee	18	23	19	19	749	535	121	71	36	50	2,591	1,536	5,768
Lenoir ee	5	2	7	3	1,143	381	33	12	43	24	1,228	682	3,563
Martin ee	4		2		574	149	2	3	7	8	383	146	1,278
Mayland ee	3	4	5	2	5	88	5	16	2	3	937	801	1,871
McDowell Tee	6	4	7	13	59	64	4	10	5	6	932	614	1,724
Mitchell ee	4	4	47	21	461	120	54	40	29	8	1,641	819	3,248
Montgomery ee	9	4	17	12	208	67	24	25	10	1	571	336	1,284
Nash ee	45	33	15	7	983	279	33	19	68	65	1,295	1,018	3,860
Pamlico ee	3	4	2		99	106	2	9	4	4	192	121	546
Piedmont ee	16	15	5	5	818	604	11	26	25	36	1,107	912	3,580
Pitt CC	17	16	44	26	2,010	871	61	59	153	113	2,760	2,348	8,478
Randolph CC	10	5	18	14	212	69	54	35	13	11	1,754	820	3,015
Richmond CC	154	39	11	8	544	174	12	3	1	2	820	399	2,167
Roanoke Chowan CC	6	6	5	3	733	203	3	1			313	129	1,402
Robeson CC	1,023	243	8	8	722	245	15	11	5	5	522	222	3,029
Rockingham CC	7	1	9	8	498	148	19	11	18	16	1,355	748	2,838
Rowan-Cabarrus CC	25	15	59	48	1,196	429	97	55	11	11	3,601	2,006	7,553
Sampson CC	52	16	4	1	573	164	59	24	8	2	736	336	1,975
Sandhills CC	198	48	20	15	917	298	51	34	114	71	1,766	1,128	4,660
Southeastern ce	115	47	5	5	615	271	8	20	16	27	1,125	603	2,857
South Piedmont CC	16	5	7	6	699	168	22	13	14	12	1,006	497	2,465
Southwestern CC	204	65	7	20	28	21	14	17	27	20	1,507	773	2,703
Stanly CC	5	3	39	31	251	124	13	9	8	20	1,508	810	2,821

	Amlnd Fern	Amlnd Male	Asian Fern	Asian Male	Black Fern	Black Male	Hisp Fern	Hisp Male	Other Fern	Other Male	White Fern	White Male	Grand Total
Surry CC	8	5	11	17	112	59	56	40	20	15	2,626	1,572	4,541
Tri-county CC	12		4	1	5	2	9	5	9	4	955	493	1,499
Vance-Granville CC	31	20	10	11	1,966	798	53	50	79	79	1,769	959	5,825
Wake TCe	56	50	529	373	2,754	1,497	423	314	262	233	5,459	5,067	17,017
Wayne CC	26	15	49	26	1,011	476	78	51	80	45	1,594	1,072	4,523
Western Piedmont CC	4	7	96	81	194	132	21	23	54	62	2,071	1,112	3,857
Wilkes CC	5	3	15	8	107	55	24	14	17	11	2,093	1,122	3,474
Wilson Technical CC	4	3	7	4	1,180	244	50	25	27	13	896	566	3,019
Total:	3,128	1,096	3,187	2,381	51,663	21,504	4,714	3,354	3,360	2,496	112,159	73,519	282,561



North Carolina Community College System

Course FTE Information System

Curriculum Two Semester Annualized FTE Ranked by Annual
FTE ANNTBL29

Fall 2004 - Spring 2005

Last Refresh on: 1/18/2006

Rank	Colleges	Fall	Spring	2004-2005	2003-2004	2002-2003
				AnnualFTE	AnnualFTE	AnnualFTE
1	Central Piedmont CC	5,167	4,942	10,109	9,951	9,782
2	Wake TCC	3,990	3,841	7,831	7,637	7,411
3	Fayetteville TCC	3,714	3,824	7,537	7,502	6,847
4	Guilford TCC	3,524	3,267	6,791	6,465	6,151
5	Cape Fear CC	2,766	2,632	5,399	5,410	5,312
6	Forsyth TCC	2,508	2,443	4,951	5,005	4,738
7	Pitt CC	2,459	2,326	4,785	4,660	4,350
8	Asheville-Buncombe TCC	2,219	2,218	4,437	4,266	4,046
9	Rowan-Cabarrus CC	2,149	2,038	4,188	3,852	3,234
10	Gaston College	1,889	1,892	3,781	3,747	3,589
11	Catawba Valley CC	1,874	1,786	3,660	3,745	3,436
12	Central Carolina CC	1,877	1,721	3,597	3,650	3,568
13	Durham TCC	1,769	1,691	3,460	3,483	3,434
14	Vance-Granville CC	1,706	1,601	3,307	3,325	3,084
15	Coastal Carolina CC	1,638	1,558	3,196	3,228	3,055
16	Alamance CC	1,583	1,525	3,109	3,053	2,697
17	Johnston CC	1,541	1,407	2,947	2,954	2,857
18	Caldwell CC & TI	1,457	1,436	2,893	2,904	2,815
19	Sandhills CC	1,440	1,423	2,864	3,156	3,051
20	Wayne CC	1,287	1,279	2,565	2,520	2,553
21	Davidson County CC	1,315	1,219	2,534	2,402	2,164
22	Surry CC	1,238	1,170	2,408	2,588	2,738
23	Cleveland CC	1,133	1,074	2,207	2,127	1,983
24	Lenoir CC	1,075	1,068	2,143	2,064	1,980
25	Western Piedmont CC	1,091	1,029	2,119	2,173	2,110
26	Craven CC	1,056	1,057	2,114	2,081	1,914
27	Wilkes CC	1,046	992	2,037	2,265	2,216
28	Piedmont CC	990	963	1,953	1,834	1,767
29	Robeson CC	979	901	1,881	1,894	1,908
30	Southeastern CC	916	913	1,829	1,792	1,850
31	Edgecombe CC	925	888	1,813	1,884	1,758
32	Mitchell CC	879	813	1,692	1,699	1,617
33	Nash CC	858	829	1,687	1,701	1,604
34	Randolph CC	843	843	1,686	1,714	1,534
35	Isothermal CC	865	816	1,681	1,701	1,570
36	College of The Albemarle	816	774	1,589	1,672	1,701
37	Southwestern CC	796	792	1,588	1,534	1,542

38	Rockingham CC	825	759	1,584	1,629	1 ,435
39	Stanly ce	826	740	1,565	1,658	1 ,499
40	Wilson TCe	791	769	1,561	1,604	1,410
41	Blue Ridge CC	791	765	1,556	1,653	1,547
42	Haywood ce	778	738	1,516	1,542	1,532
43	Halifax ce	741	702	1 ,443	1,467	1 ,450
44	South Piedmont ce	706	695	1 ,402	1,328	1,361
45	Carteret CC	679	641	1,321	1,359	1,356
46	Beaufort County ee	678	638	1,315	1,333	1,359
47	Richmond CC	663	626	1,289	1,383	1,375
48	Bladen CC	574	567	1,141	1,193	1,071
49	Mayland ec	584	536	1,120	1,039	1,018
50	Sampson CC	572	526	1,097	1,105	1,158
51	James Sprunt CC	559	524	1,083	1,177	1,194
52	McDowell TCC	524	472	996	1,012	998
53	Brunswick ce	422	415	837	870	813
54	Tri-County ce	411	406	817	927	968
55	Roanoke-Chowan ce	387	390	777	788	812
56	Martin CC	393	374	767	731	697
57	Montgomery CC	305	332	636	699	670
58	Pamlico CC	164	165	328	302	312
	Total 2004-2005	75,752	72,771	148,523	0	0
	Total 2003-2004	75,489	72,952	0	148,441	0
	Total 2002-2003	71,972	70,032	0	0	142,004

North Carolina Community College System Curriculum Student Information II
Unduplicated Curriculum Student Enrollment by Age, Program and Gender
CC101M - II
Reporting Year: 2004-2005

	Associate	Associate	Certificate	Certificate	Diploma	Diploma	Transitional	Transitional	Total	Total	Total
Age	Female	Male	Female	Male	Female	Male	Female	Male	Female	Male	Enrollment
17	2		1				31	10	34		44
18	43	37	1		1	1	105	72	150	110	260
19	495	484	6	8	18	17	115	67	634	576	1,210
20	757	721	11	15	24	15	98	75	890	826	1,716
21	635	682	18	14	21	17	87	69	761	782	1,543
22	527	541	17	14	15	17	70	57	629	629	1,258
23	490	444	12	22	19	13	82	39	603	518	1,121
24	394	350	23	14	17	11	56	39	490	414	904
25-29	1,398	1,049	94	94	94	38	213	127	1,799	1,308	3,107
30-34	867	589	91	99	74	26	13	101	1,171	815	1,986
35-39	680	380	71	85	51	26	10	96	906	587	1,493
40-44	492	235	82	78	49	16	90	75	713	404	1,117
45-49	349	150	52	77	19	14	78	67	498	308	806
50-54	148	82	43	39	16	12	50	33	257	166	423
55-59	53	50	20	47	12	3	30	24	115	124	239
60-64	23	16	4	16	4	1	14	11	45	4	89
65-69		7	2	5	2	1	1	4	5		22
70 & Up	1	1	2	4			2	6	5		16
Totals:	7,354	5,818	550	631	436	228	1,365	972	9,705	7,649	17,354

North Carolina Community College System
Continuing Education Student Enrollment
by Age and Program
NEXT0301 Report Year: 2004-2005

Student Age	16 &	17	18	19	20	21	22	23	24	25 - 29	30 - 34	35 - 39	40 -44	45 -49	50 - 54	55 - 59	60 - 64	65 • 69	70 &	Total	
Funding Area	Under																		Higher	Students	
BASIC SKILLS		63	221	449	460	439	398	373	383	1,570	1,117	898	650	477	258	152	105	59	60	8,132	
Percentage		0.77 %	2.72 %	5.52 %	5.66 %	5.40 %	4.89 %	4.59 %	4.71 %	19.31 %	13.74 %	11.04 %	7.99 %	5.87 %	3.17 %	1.87%	1.29 %	0.73 %	0.74 %	100.00 %	
COMMUNITY SERVICE -- GRANT SUPPORTED & RECEIPT SUP		1	9	19	36	33	37	59	70	499	455	458	375	340	285	207	165	88	396	3,532	
Percentage		0.03 %	0.25 %	0.54 %	1.02 %	0.93 %	1.05 %	1.67%	1.98 %	14.13 %	12.88 %	12.97 %	10.62 %	9.63 %	8.07 %	5.86 %	4.67 %	2.49 %	11.21 %	100.00 %	
FOCUSED INDUSTRY TRAINING FIT				3	5	10	8	9	10	61	98	88	98	88	70	52	59	4		663	
Percentage				0.45 %	0.75 %	1.51 %	1.21 %	1.36%	1.51 %	9.20 %	14.78 %	13.27 %	14.78 %	13.27 %	10.56 %	7.84 %	8.90 %	0.60 %		100.00 %	
HUMAN RESOURCES DEVELOPMENT HRD		1	16	35	52	49	54	45	44	280	256	335	392	328	234	130	79	13	16	2,359	
Percentage		0.04 %	0.68 %	1.48 %	2.20 %	2.08 %	2.29 %	1.91 %	1.87 %	11.87 %	10.85 %	14.20 %	16.62 %	13.90 %	9.92 %	5.51 %	3.35 %	0.55 %	0.68 %	100.00 %	
LEARNING LABORATORY	1	9	55	323	426	400	308	274	194	650	330	262	174	133	70	34	46	3	3	3,695	
Percentage	0.03 %	0.24 %	1.49 %	8.74 %	11.53 %	10.83 %	8.34 %	7.42 %	5.25 %	17.59 %	8.93 %	7.09 %	4.71 %	3.60 %	1.89%	0.92 %	1.24%	0.08 %	0.08 %	100.00 %	
NEW AND EXPANDING INDUSTRY NIT & EIT				4	10	23	25	29	26	158	223	198	203	145	97	66	186	2		1,395	
Percentage				0.29 %	0.72 %	1.65 %	1.79%	2.08 %	1.86 %	11.33 %	15.99 %	14.19 %	14.55 %	10.39 %	6.95 %	4.73 %	13.33 %	0.14 %		100.00 %	
OCCUPATIONAL EXTENSION Regular Budget	6	42	103	176	236	270	303	355	418	2,532	2,941	2,880	2,675	2,102	1,486	955	561	154	160	18,355	
Percentage	0.03 %	0.23 %	.056 %	0.96 %	1.29 %	1.47 %	1.65%	1.93 %	2.28 %	13.79 %	16.02 %	15.69 %	14.57 %	11.45 %	8.10 %	5.20 %	3.06 %	0.84 %	0.87 %	100.00 %	
RECEIPT SUPPORTED OCCUPATIONAL EXTENSION		1		4	5	3	7	19	28	191	247	319	334	314	296	214	142	23	31	2,178	
Percentage		0.05 %		0.18 %	0.23 %	0.14 %	0.32 %	0.87 %	1.29 %	8.77 %	11.34 %	14.65 %	15.34 %	14.42 %	13.59 %	9.83 %	6.52 %	1.06%	1.42 %	100.00 %	
SELF SUPPORTED - NON OCCUPATIONAL		3	5	3	5	5	11	9	8	47	41	36	31	33	24	27	9	4	2	303	
Percentage		0.99 %	1.65 %	0.99 %	1.65 %	1.65 %	3.63 %	2.97 %	2.64 %	15.51 %	13.53 %	11.88 %	10.23 %	10.89 %	7.92 %	8.91 %	2.97 %	1.32 %	0.66 %	100.00 %	
SMALL BUSINESS CENTER SBC				2	1	4	4	16	16	105	148	193	181	193	156	120	172	14	7	1,332	
Percentage				0.15 %	0.08 %	0.30 %	0.30 %	1.20 %	1.20%	7.88 %	11.11 %	14.49 %	13.59 %	14.49 %	11.71 %	9.01 %	12.91 %	1.05 %	0.53 %	100.00 %	
Wake TCC Totals:		7	120	409	1,018	1,236	1,236	1,155	1,188	1,197	6,093	5,856	5,667	5,113	4,153	2,976	1,957	1,524	364	675	39,574

WAKE TECHNICAL COMMUNITY COLLEGE

Unduplicated Student Enrollment by Age 2004 – 2005

Curriculum		
Age	Enrollment	%
17	44	.2%
18	260	1.4%
19	1,210	6.9%
20	1,716	9.9%
21	1,543	8.9%
22	1,258	7.3%
23	1,121	6.4%
24	904	5.3%
25-29	3,107	17.9%
30-34	1,986	11.5%
35-39	1,493	8.6%
40-44	1,117	6.4%
45-49	806	4.6%
50-54	423	2.6%
55-59	239	1.3%
60-64	89	.5%
65+	38	.2%
TOTAL	17,354	

Continuing Education		
Age	Enrollment	%
16 and under	7	.02%
17	120	28%
18	409	.9%
19	1,018	2.4%
20	1,236	2.9%
21	1,236	2.9%
22	1,155	2.7%
23	1,188	2.8%
24	1,197	2.8%
25-29	6,093	14.6%
30-34	5,856	13.9%
35-39	5,667	13.6%
40-44	5,113	12.2%
45-49	4,153	9.9%
50-54	2,976	7.2%
55-59	1,957	4.6%
60-64	1,524	3.6%
65+	1,039	2.6%
TOTAL	39,574	

Data Warehouse Tables CC101M-II and
NEXT 0301

WAKE TECHNICAL COMMUNITY COLLEGE

Curriculum and Continuing Education Student Enrollment by Gender 2004 – 2005

	Curriculum		Continuing Education	
Male	7,534	44.3%	20,684	52.2%
Female	9,488	55.7%	18,890	47.8%
Total	17,017	100%	39,574	100%

Curriculum and Continuing Education Student Enrollment by Race 2004 – 2005

	Curriculum		Continuing Education	
White	10,526	61.8%	21,881	55.2%
Black	4,251	24.9%	10,410	26.3%
Asian	902	5.3%	1,732	4.3%
Hispanic	737	4.3%	4,294	10.8%
Other	601	3.7%	1,257	3.4%
Total	17,017	100%	39,574	100%

