

---

FACT

---



---

BOOK

---

# Wake Technical Community College

---

*Office of  
Institutional Effectiveness  
&  
Research*

---

APRIL 2005

# **WAKE TECHNICAL COMMUNITY COLLEGE 2004 FACT BOOK**

## **TABLE OF CONTENTS**

<b>Policy Statement .....</b>	<b>1</b>
<b>Purpose of this FACT BOOK.....</b>	<b>2</b>
<b>Mission Statement .....</b>	<b>3</b>
<b>Glossary .....</b>	<b>6</b>
<b>The College .....</b>	<b>11</b>
<b>Service Area: Wake County.....</b>	<b>31</b>
<b>Students.....</b>	<b>33</b>
<b>Continuing Education .....</b>	<b>47</b>
<b>Employees .....</b>	<b>55</b>
<b>Facilities .....</b>	<b>59</b>
<b>Comparisons.....</b>	<b>69</b>

## **POLICY STATEMENT**

### **AFFIRMATIVE ACTION/EQUAL OPPORTUNITY**

Wake Technical Community College offers Equal Employment and Educational Opportunities to all employees, students, prospective employees, and prospective students.

Affirmative Action, Equal Educational Opportunities, and Compliance with the Americans With Disabilities Act are viewed by the Board of Trustees as an integral part of the mission and purpose of Wake Technical Community College.

Questions concerning this policy should be addressed to:

#### **STUDENT MATTERS:**

Dean of Students  
Wake Technical Community College  
9101 Fayetteville Road  
Raleigh, NC 27603-5696

#### **EMPLOYEE MATTERS:**

Human Resources Specialist  
Wake Technical Community College  
9101 Fayetteville Road  
Raleigh, NC 27603-5696

Individuals with disabilities who need assistance or require special accommodations to access College activities should request such services in advance by calling Disability Support Services at (919) 662-3405 or (919) 779-0668 (TDD).

## **PURPOSE OF THIS FACT BOOK**

This **Fact Book** is designed to provide the public whom we serve, college administrators, planners, and other selected individuals such as trustees, local commissioners, legislators, and key college friends with an easily readable compilation of data about the College. While some historical information is included, the data and facts provide a profile of the College for one year. Accumulations of data, such as data for the last five years, are included as appropriate to illustrate change or percent of change.

This book has been compiled by the College's Office of Institutional Effectiveness and Research under the direction of Dr. John B. Boone, Associate Vice President of Institutional Effectiveness and Research.

Every effort has been made to make the **FACT BOOK** as error-free as possible. However, it will be greatly appreciated if typographical errors, incorrect data, and suggestions for improving the **FACT BOOK** are forwarded to the Office of Institutional Effectiveness and Research, Room 128, Holding Hall. Ms. Tammy Stephenson may be reached at 662-3451 and Dr. John Boone at 662-3454

## **MISSION STATEMENT**

The mission of Wake Technical Community College is to help improve and enrich lives by meeting the lifelong educational, training, and service needs of its diverse community. The College is committed to promoting individual success in the workplace and higher education and to promoting cultural, social, and economic development.

In pursuit of its mission, this public two-year comprehensive postsecondary educational institution adheres to an open-door policy by offering quality accessible and affordable educational opportunities to all adults regardless of age, sex, socioeconomic status, ethnic origin, race, religion, or disability. To meet the needs of its community, the College focuses on providing support services, resources, community outreach, and partnerships; programs in basic skills development; vocational, technical, and occupational training; and college/university transfer preparation.

## **ROLE AND SCOPE**

In order to implement its mission through clearly defined programs and services, the College:

offers credit programs leading to associate degrees, diplomas and certificates designed for immediate entry into employment, an associate degree in general education, and associate degrees designed to transfer to four-year institutions. The College also offers pre-curriculum programs for students to develop academic proficiency so that they may successfully complete curriculum courses.

provides occupational career enhancement programs for individuals and support for economic development to businesses, industries, and agencies. Basic skills education, English as a Second Language, and a wide variety of continuing education courses and programs for personal enrichment are offered on campus and throughout the county. The College further serves its constituents by providing a broad range of community services, partnerships and outreach programs.

provides a wide range of support services designed to assist students in successfully fulfilling their education and occupational goals. These services, developed to meet the diverse needs of individual students, begin with their initial contact with the College and continue throughout their enrollment and job placement or transfer for further study.

practices sound fiscal management and systematic planning to provide facilities, equipment, and state-of-the art technology to ensure quality education opportunities at secure facilities accessible to Wake County citizens.

## **OUR VISION**

Wake Tech will be a leader among the 59 NCCCS institutions and will:

- ◆ strive for quality and excellence in all educational programs by closely monitoring students satisfaction and success through a comprehensive system of research and institutional effectiveness
- ◆ position itself as a primary choice of Wake County citizens for workforce development, occupational, college/university transfer, basic education, and lifelong learning opportunities.
- ◆ be a major partner in attracting new and expanding business and industry by emphasizing human resource development and technology transfer.
- ◆ maximize service to area citizens by listening and responding to changing educational needs.

## **COLLEGE GOALS**

### **Student Success**

Provide a dynamic learning environment to ensure successful achievement of students' goals by administering sound policies, curricula, instruction and support services.

### **Workforce Development**

In collaboration with *Regional Economic Development Partnerships*, identify the workforce needs of emerging jobs in rural and urban economies in North Carolina. Develop and implement the educational and training programs necessary to meet the workforce needs of each region and college services area and promote recruitment, retention and development of high quality faculty and staff necessary to achieve the educational and training objectives of the community college system and provide North Carolina with a world-class workforce.

### **Diverse Populations Learning Needs**

Provide North Carolina citizens with the opportunity to develop essential skills for lifelong learning. Upgrade and retrain North Carolina learners for the workplace through flexible, accessible, customized educational and training programs within their communities.

### **Resources**

Continuously research, analyze and secure the resources necessary to fulfill the mission of the North Carolina Community College System and develop processes for measuring the effectiveness of resource allocations and utilization, within the North Carolina Community College System.

**Technology**

Encourage and support North Carolina Community College faculty and staff in the effective and efficient uses of instructional technology and administrative computing systems to improve the delivery of academic programs to North Carolina citizens.

**Community Services**

Provide courses and support service activities for the enrichment of the community's civic, economic, and cultural needs.

**Southern Association of Colleges and Schools Accreditation**

Wake Technical Community College is accredited by the Commission on Colleges of the Southern Association of Colleges and Schools (1866 Southern Lane; Decatur, Georgia 30033-4097; Telephone Number 404-679-4501) to award the associate degree.

## GLOSSARY

**Academic Extension (non-credit) Courses** consist of single courses, each complete in itself, designed to serve the academic educational needs of adult citizens.

**Academic Semester** - A sixteen week period during which credit classes are offered.

**Academic Year** - The academic year includes fall and spring semesters as well as an eleven-week summer term.

**Accreditation** - A formal means of recognizing an institution for maintaining standards that qualify the graduate for admission to higher institutions or for professional practice. Accrediting agencies are responsible for establishing the standards and evaluating the school's compliance with them (e.g., Southern Association of Colleges and Schools, American Dental Association, Engineering).

**Accountability** - The acceptance of personal responsibility for the achievement of predetermined measurable objectives.

**Adult Education** - Programs offered by a community college or technical institute that provide opportunities for adults and out-of-school youth to further their education.

**Associate in Applied Science Programs** - These programs range from 64 to 76 semester hour credits. A full-time student can typically complete one of these programs within two years. In addition to major course work, associate in applied science degree programs require a minimum of 15 semester hour credits of general education. General education requirements include course work in communications, humanities/fine arts, social/behavioral sciences and natural sciences/mathematics. Certain courses in associate degree programs may be accepted by a four-year college or university for transfer credit in an associated field.

**Average Annual FTE** - The annualized FTE of the fall and spring semesters added together for a given year.

**Example:** One full-time equivalent (FTE) student represents 16 student membership hours per week for 16 weeks or 256 student membership hours for each semester enrolled. Thus, if:

Fall Semester =  $\frac{2,483,200}{512}$  membership hours annualized = 4850 FTE  
(256 X 2 semesters = 512)

Spring Semester =  $\frac{2,380,800}{512}$  = 4650 FTE

Average Annual FTE = 4850 (Fall)  
+4650 (Spring)  
9500



**Avocational Extension (non-credit) Courses** consist of single courses, each complete in itself, which focus on an individual's personal or leisure needs rather than his occupation, profession, or employment.

**Basic Skills** - One of the primary missions of Wake Tech is to offer educational opportunities for adults 16 years of age and older who are out of school. Wake Tech provides educational opportunities through five major literacy components, consisting of classes located at work sites, churches, community centers, schools, libraries, sheltered workshops, prisons and the community college campuses.

**Adult Basic Education (ABE)** - A program of basic skills for adults, 16 years of age or older and out of school, who function at less than a high school level.

**General Educational Development (GED)** - A high school equivalency program enabling adults to take the General Education Development Tests to determine if they are at the 12th grade completion level of English, social studies, science, reading, and math. Individuals achieving the required scores on the GED are awarded the High School Equivalency Diploma. The program is open to individuals 18 years or older.

**Adult High School (AHS)** - A program of instruction offered cooperatively with local public school systems to help students earn an adult high school diploma.

**English as a Second Language (ESL)** - A program of instruction to help adults with limited or no English language proficiency.

**Compensatory Education** - A special state-funded educational program for developmentally handicapped adults (over 17 years of age).

**Base Budget** - Appropriations made by the Legislature to fund the current level of operation.

**Capital Outlay** - Capital outlay expenditures are those that result in the acquisition of fixed assets or additions to fixed assets (i.e., expenditures for land, buildings, or equipment).

**Categorical Funds** (restricted) - Funds from a federal, state, local, or private source that are restricted to expenditures in a particular category or program.

**Certificate Programs** - These programs range from 12 to 18 semester hour credits and can usually be completed within one semester by a full-time student. Associate degree level courses within a certificate program may also be applied toward a diploma or an associate in applied science degree.

**Certification** - A voluntary form of recognition for knowledge and skill in a particular profession.

**Clock Hour** - One hour of instruction given one student. Class periods from 50-60 minutes may be counted as one clock hour depending on the type of instruction delivered.

**College Transfer Programs** - These programs are offered through the Associate in Arts, Associate in Fine Arts and Associate in Science degrees. The Associate in Arts and the Associate in Science programs are part of the Comprehensive Articulation Agreement (CAA). This agreement addresses the transfer of students between institutions in the North Carolina Community College System and the constituent institutions of the University of North Carolina System.

**Community Service Programs** consist of those continuing education (extension) programs that are directed to the academic, avocational, and development of personal skills of the community.

**Competency-Based Instruction** - Instruction based on measurable student performance outcomes consistent with the skills and knowledge needed by entry-level employees in a particular field.

**Continuing Education/Extension Programs** include New and Expanding Industry, and Self-Supporting Recreational programs in addition to the Regular Budget Extension program areas of Adult High School, Academic Extension, Avocational Extension, Occupational Extension, Practical Skills, Adult Basic Education and Compensatory Education.

**Credit Hour** - An instructional unit used for recognition of the amount of credit a student earns for a given course. Example: Semester Credit Hour - A student who spends one classroom hour per week in a class for sixteen weeks earns one semester hour credit.

**Current Expense** - Funds used for the general operation of the institution to include salaries, benefits, and other instructional costs.

**Curriculum Programs** - A term used to describe a wide variety of planned educational programs which range in length from one semester to two years. The programs lead to certificates, diplomas or associate degrees, depending on the nature of the curriculum. Curriculum programs include certificate, diploma, Associate in Applied Science, Associate in Arts, Associate in Fine Arts, Associate in Science and Associate in General Education programs.

**Developmental Education** - A program providing specialized credit courses for students who need to improve their basic skill in order to perform at the level required for admission to degree and diploma programs. Usually these courses are in reading, writing, and mathematics.

**Diploma Programs** - These programs range from 36 to 48 semester hour credits and can usually be completed by a full-time student within two semesters and one summer term. Associate degree level courses within a diploma program may also be applied toward an Associate in Applied Science degree.

**English as a Foreign Language (EFL)** A pre-curriculum program designed to help non-native speaking students acquire sufficient skills in English to enter and succeed in curriculum (academic) programs. These courses are available only on Wake Tech's 401 South Campus.

**English as a Second Language (ESL)** - A program of instruction to help adults with limited or no English language proficiency. These courses are usually offered through continuing education at off-campus sites for students who have non-academic goals such as improvement of job performance, better communication with family members or the general public, etc.

**Expansion Budget** - Additional funds from the Legislature to increase the quantity or quality of services rendered.

**Fiscal Year** - The twelve-month period upon which the institution's budget is based, July 1 - June 30.

**Full-Time Equivalent (FTE)** - One full-time equivalent (FTE) student represents 16 student membership hours per week for 16 weeks or 256 student membership hours for each semester enrolled.

**Annual Curriculum FTE** - The total of fall and spring FTE.

**Annual Extension FTE** - The total of spring, summer and fall sequenced periods FTE.

**Budget Full-Time Equivalent (B/FTE)** - Used to prepare the operating budget and to provide for an equitable distribution of the operating funds allocated by the State Board to the institutions.

**Equipment Full-Time Equivalent (E/FTE)** - Used to prepare the equipment budget and to provide for an equitable distribution of the equipment funds allocated by the State Board to the institutions.

**Library Full-Time Equivalent (L/FTE)** - Used to prepare the library budget to provide for an equitable distribution of library funds allocated for the purchase of library books and audiovisual materials.

**Credit Hour Full-Time Equivalent (H/FTE)** - Used in furnishing data to the North Carolina Commission on Higher Education Facilities and the University of North Carolina.

**Construction Full-Time Equivalent (C/FTE)** - Used to determine priorities and institutional eligibility for federal and state construction funds for the institutions.

**Full-Time Students** - A student is considered full time if he/she carries 12 or more semester credit hours of classes.

**General Education Programs** - These programs are designed for individuals wishing to broaden their education, with emphasis on personal interest, growth and development. The two-year General Education program provides students opportunities to study English, literature, fine arts, philosophy, social science, science and mathematics at the college level. All courses in the program are college-level courses. Many of the courses are equivalent to college transfer courses; however, the program is not principally designed for college transfer. Successful completion of 64-65 semester hour credits leads to an associate in general education degree.

**Human Resources Development (HRD)** - A program for chronically unemployed adults with prevocational training and counseling.

**Job Training Partnership Act (JTPA)** - A federal program designed to provide job training and employment opportunities for economically disadvantaged, unemployed, or underemployed persons.

**Learning Laboratory Programs (Center)** consists of resources to help students succeed in their courses of study at Wake Tech. A learning lab coordinator or instructor offers one-on-one tutorial assistance, combined with a variety of other techniques and materials such as audiovisual and computer equipment and self-instructional materials, in an effort to help students learn.

**New and Expanding Industry Programs** provide for the training needs of new industries which are moving into the state and also for existing industries undergoing a major expansion which result in the need for additional skilled manpower.

**Non-Credit (Extension) Courses** - Courses for professional training, upgrading or general interest.

**Occupational Education** - Any type of instruction or training (credit or non-credit) that prepares one to enter an occupation.

**Other Costs** - A term used to describe current instructional and operating instructional support costs excluding personnel and the associated fringe benefits. The term is used for supplies, travel, postage, etc.

**Pell Grants** - Needs-based federally funded grants.

**Practical Skills Extension (non-credit) Programs** consist of single courses each complete in itself, designed to provide practical training for persons pursuing additional skills which are not considered their major primary vocation but may supplement income or may reasonably lead to employment.

**Regular Budget Extension Programs** include Adult High School, Occupational Extension, Adult Basic Education and Compensatory Education.

**Self-Supporting Recreational Programs** are self-supporting courses which the college may provide at the request of the community but for which the college receives no budgetary credit.

**Unduplicated Headcount** - The total number of students (both full-time and part-time) enrolled in all courses during a year. Each student is counted only once during the year regardless of the number of classes he/she takes or the number of semesters for which he/she registers.

**Source:** A Matter of Facts, The North Carolina Community College System Fact Book, 2004.

Annual Statistical Report, 2002-2003, North Carolina Community College System.

# **THE COLLEGE**

## HISTORY

Wake Technical Community College is a public educational institution, nonprofit and tax supported, under the control of a Board of Trustees. It is an institutional member of the North Carolina System of Community Colleges, State Board of Community Colleges. Authority for the establishment of the College is found in Chapter 115D of the General Statutes of North Carolina and the amendments thereto.

The College was chartered April 3, 1958, as the Wake County Industrial Education Center under the governance of the Wake County Board of Education. In 1961, the Board employed Dr. Kenneth M. Wold as the Center's first Director and charged him with the responsibility of "developing a program of training for adults."

Because there was no central training facility, the first training efforts were conducted in cooperation with employers and users of the training. Practical nursing classes, for example, were held at Wake Memorial Hospital; fire prevention and lifesaving classes were held among area fire departments; and instruction in machine operating and supervision was provided at industrial locations.

On October 7, 1963, operation of the Center began at its present location in a single building of 40,795 square feet and costing \$560,000. There were 34 full-time students enrolled in classes on campus and an additional 270 enrolled in industrial training programs at locations throughout the County.

On January 8, 1964, the Center was formally dedicated as the W. W. Holding Industrial Education Center and was transferred from the authority of the Board of Education to an eight-member Board of Trustees.

In September 1965, Dr. Kenneth M. Wold resigned as Director, and Robert W. LeMay, Jr., head of the Center's general adult and community service programs, was named Acting Director. Mr. LeMay was named President on February 16, 1966.

On March 3, 1966, W. W. Holding Industrial Education Center was granted approval by the State Board of Education as the W. W. Holding Technical Institute.

The name was changed to Wake Technical Institute in 1974 and to Wake Technical College on March 1, 1980. The name was changed to Wake Technical Community College on December 1, 1987, to better reflect the college-level instruction that is provided.

Robert W. LeMay, Jr., served as President through June 30, 1979, at which time James A. Cox, the College's Vice President for Administration, was appointed temporary President. He served until June 30, 1980.

Dr. Bruce I. Howell was named the College's third President on July 1, 1980.

The College has grown since 1963 from the one building of 40,795 square feet to three campuses and facilities that include twenty-two permanent structures totaling over 733,000 square feet.

Today these facilities and a staff and faculty of just over 490 people serve a curriculum unduplicated headcount of approximately 12,000. When non-credit instruction is added to the College's service to Wake County citizens, approximately 44,000 persons take one or more courses annually.

The College entered a contractual agreement with the University of North Carolina at Greensboro to offer college transfer courses in the fall of 1991. Subsequently, a college transfer program was approved to be offered by Wake Tech in the fall quarter of 1992. Students enrolled in the College Transfer program earn Associate in Arts and Associate in Science degrees. The College became a fully comprehensive community college in the fall of 1992.

The Wake Technical Community College News and Observer Adult Education Center formally opened in August 1993. The Center was made possible through a \$100,000 gift from the News and Observer Foundation. Located on Capital Boulevard, the Center provides a home for the College's basic skills program, one of the largest in the North Carolina Community College System. The Adult Education Center also is the headquarters for Wake Tech's Small Business Center.

Wake Tech's share of county and state bond referendums held in 1993 was \$41 million. These funds were designated to build a student education/classroom building, connect the main campus to Fuquay-Varina's waste water treatment plant, construct a parking deck at the Health Education Campus, and renovate and repair existing facilities. During the summer of 1994, construction began on the student education/classroom building, and it was opened on December 3, 1996.

In January 1994, Wake Tech acquired 132 acres of land on Highway 401 North for a site for a northeast Wake County campus. This campus will serve the residents of northern Wake County. Wake Tech was designated a multi-campus college by the State Board of Community Colleges on February 16, 1996.

After a two-year in-depth self-study and an on-site visit by collegiate peers from across the southeastern United States in March 1995, Wake Tech's accreditation to award the associate degree was reaffirmed by the Commission on Colleges of the Southern Association of Colleges and Schools for another ten years.

In the fall of 1997, Wake Tech, along with the other 57 colleges of the North Carolina Community College System, converted from the quarter system to the semester system.

On June 19, 1998, the State Board of Community Colleges approved Wake Tech's request to change the Allied Health Center to the Health Sciences Campus.

In 2001 Wake Tech purchased 12 acres adjacent to Tech Road (SR 2811) and the US 401 South Main Campus for the construction of additional parking spaces for faculty, staff and students.

In 2002 Wake Tech along with several other community colleges (Edgecombe, Johnston, Nash, Wayne, and Wilson) opened the eastern North Carolina Plastics Technology Center in Zebulon (Wake County). This 8,000 square foot building will house the specialized laboratory courses associated with the Manufacturing Technology/Plastics Program at each of these six institutions.

On October 15, 2003, Dr. Bruce I. Howell retired, as President of Wake Technical Community College and Dr. Stephen C. Scott became the College's fourth President.

## **FACILITIES GROWTH**

When Wake Tech opened in 1963, there was one building of 40,795 square feet on a 30.8 acre tract. This building, named in honor of W. W. Holding, a long-time member of the Wake County Board of County Commissioners, was twice enlarged to its present size of 43,348 square feet.

In 1966-67, a maintenance shop and a laboratory building of 8,990 square feet were added to the campus. Additional property was purchased between 1968 and 1972, which increased the campus size to 76.64 acres.

In 1968, the business education building of 22,540 was constructed and named in honor of Leo Pucher, the College's first Board of Trustees Chairman who was also instrumental in founding the College. Also, vocational laboratories were expanded in 1968 and a 36,405 square-foot addition, which was named in honor of Dr. I. E. Ready who was Director of the Department of Community Colleges, was completed.

Two buildings and approximately 3.5 acres adjacent to Wake Medical Center were dedicated in 1972 by the Wake County Commissioners for health education. Subsequently, a power mechanics laboratory building was completed in 1974 on the main campus.

By 1975, a student services building of 28,066 square feet was constructed for the rapidly increasing student body. This facility was named in honor of Robert W. LeMay who served as President from 1966 until 1979.

Maintenance and storage facilities were added in 1980.

The technical education building, occupied in 1982, provides 40,860 square feet of classroom, laboratory and auditorium space for the conduct of technical education.

The College continued to grow with an 8,320 square-foot microelectronics laboratory addition completed in early 1984.

A mechanical technology building was completed in 1987. In approximately 16,980 square feet of space, this building provides space for a machine shop, two automation/robotics laboratories, and three classrooms.

In late 1988, construction was completed on a 84,000 square-foot library education building. This building features a 28,000 square-foot library with study rooms, drafting and typing labs; an enlarged audiovisual area with a new studio and two darkrooms; two architectural drafting labs; and 36 additional classrooms.

The 1990-91 school year was a busy one for campus construction. A 16,600 square-foot child care center was completed. It includes classrooms, offices, child care areas, and a full-service kitchen. Also, a 32,000 square-foot health education building that houses a library, offices,



classrooms, and laboratories was completed. Additional parking was provided for both facilities.

In August 1993, the College, with the assistance of a \$100,000 gift from the News and Observer Foundation, opened the News and Observer Adult Education Center. Located on Capital Boulevard, the Center provides a home for the College's basic skills program, one of the largest in the North Carolina Community College System. The 21,545 square-foot leased building, previously occupied by Hardbarger Business College, includes 12 classrooms, three computer labs, a student lounge, ten offices, a seminar/conference room, and a full resource center with individualized learning materials.

In 1996, Wake Tech opened a parking deck at the Health Sciences Campus and a 110,000 square-foot Student Education building on Main Campus. The Student Education building houses the Hotel and Restaurant Management and Culinary Arts programs and the kitchens and other facilities necessary for those programs, a conference center, and new cafeteria.

During the summer of 1998, the College purchased the Wells Furniture Company property at the corner of U.S. 401 south and Tech Road (SR 2811). This adds 14,200 square feet to the College's facilities inventory.

In the Spring 2000, Wake Tech opened the Business and Industry Center located at 600 New Waverly Place, Cary. The 14,963 square-foot leased building includes five computer labs, three classrooms, two conference rooms and ten offices.

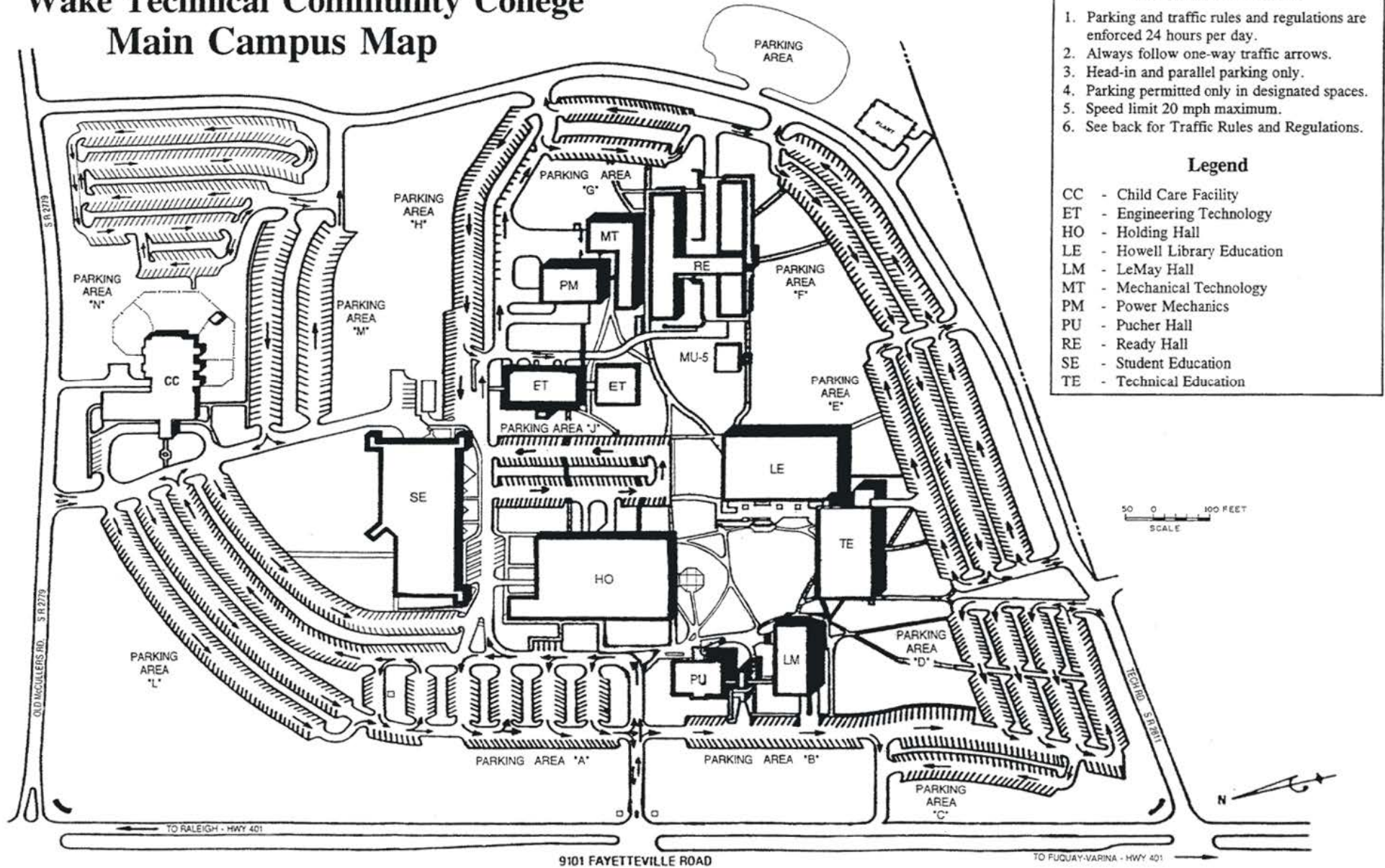
In 2001 Wake Tech purchased 12 acres and constructed additional parking spaces adjacent to Tech Road (SR 2811) behind the Wells Furniture Company property.

In 2002 Wake Tech along with several other community colleges (Edgecombe, Johnston, Nash, Wayne, and Wilson) opened the Eastern North Carolina Plastics Technology Center in Zebulon (Wake County). This 8,000 square foot building will house the specialized laboratory courses associated with the Manufacturing Technology/Plastics Program at each of these six institutions.

In 2003, a 75,279 square-foot health sciences building was completed as well as an 86,500 square-foot engineering technology building on the main campus.

In 2004, the Automotive and Heavy Equipment Technology Complex (40,906 square feet) was completed on the main campus.

# Wake Technical Community College Main Campus Map



## Parking and Traffic

1. Parking and traffic rules and regulations are enforced 24 hours per day.
2. Always follow one-way traffic arrows.
3. Head-in and parallel parking only.
4. Parking permitted only in designated spaces.
5. Speed limit 20 mph maximum.
6. See back for Traffic Rules and Regulations.

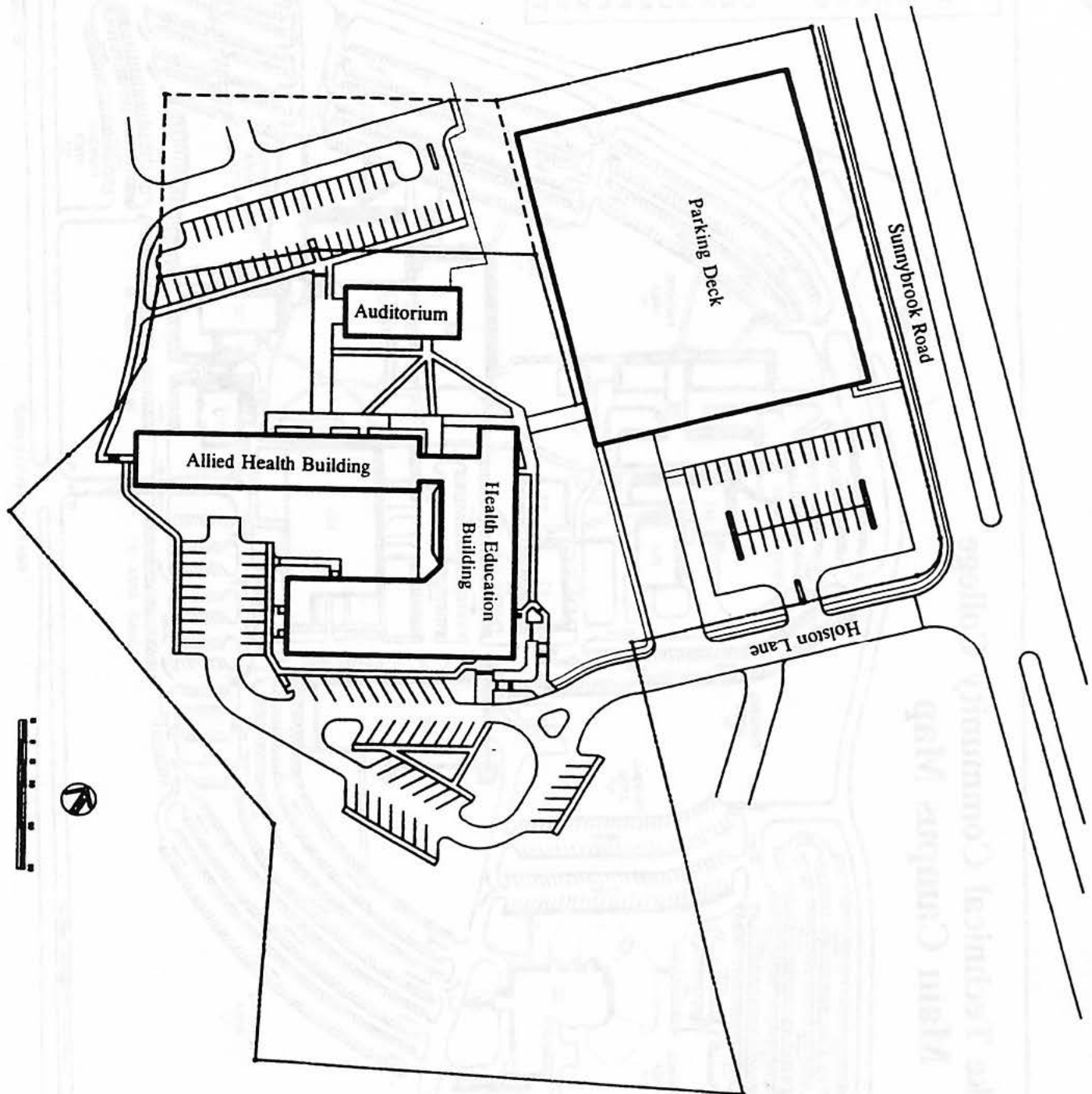
## Legend

CC	- Child Care Facility
ET	- Engineering Technology
HO	- Holding Hall
LE	- Howell Library Education
LM	- LeMay Hall
MT	- Mechanical Technology
PM	- Power Mechanics
PU	- Pucher Hall
RE	- Ready Hall
SE	- Student Education
TE	- Technical Education

# Wake Technical Community College

Health Sciences Campus Plan

Raleigh, North Carolina



## MEMBERS OF THE BOARD OF TRUSTEES

	<u>Beginning of Term</u>	<u>End of Term</u>
* Lide Cooke Anderson	July 1993	June 2005
Wanda W. Denning	July 2001	June 2005
Barbara T. Flood	July 1990	June 2005
George N. Hamrick	June 1998	June 2006
Nancy Barker Johns	June 2004	June 2008
Harvey L. Montague	July 1996	June 2008
Jim W. Perry	November 2002	June 2006
Carl D. Price	July 2003	June 2007
Senator Eric M. Reeves	June 2004	June 2008
R. Keith Shackelford	August 2002	June 2006
James R. Talton, Jr.	October 2001	June 2007
Robert M. Zippay	August 2002	June 2007
President, Student Government Association		

## FORMER MEMBERS OF THE BOARD OF TRUSTEES

**/*	Lawrence E. Allen, Sr.	July 1975	June 1995
**/**	William D. Ashley	November 1965	June 1973
	Joseph S. Ashworth	July 1989	February 1995
***	Thomas R. Ashworth	June 1977	June 1989
***	W. W. Balentine	October 1963	June 1965
	Robert J. Barker	June 1995	June 2001
***	A. L. Becker	September 1967	June 1975
	David B. Bell, Jr.	July 1985	June 1996
***	W. Jennings Booth, Sr.	August 1975	September 1986
	Ralph G. Brashear	October 1979	June 1985
	Doris M. Burke	June 2000	June 2004
	Joan H. Burkhardt	July 1990	June 1998
**	Donald H. Carpenter	August 1971	June 1979
	Harry K. Clark, II	February 1974	November 1978
***	F. Roland Danielson	July 1977	September 1979
	C. P. Dean	November 1965	June 1977
	Paul A. DelaCourt	August 1967	June 1975
***	Anthony DeLisse	February 1965	June 1977
***	W. G. Enloe	December 1965	June 1966
***	Emol A. Fails	January 1976	May 1978
	Johnny I. Farmer	October 1995	June 2003
	Ralph E. Forrest	June 1978	June 1991
**/**	Mary M. Gentry	August 1971	June 1987

## FORMER MEMBERS OF THE BOARD OF TRUSTEES

	William T. Graham	July 1995	June 1999
***	T. M. Grimes	October 1963	June 1971
	W.H. (Buddy) Holding	July 1979	June 1992
	Joseph Q. Holliday	September 1967	June 1977
***	William W. Johnson	October 1963	June 1967
	Walter M. Keller	February 1987	June 1995
	Henry C. Knight	June 1998	June 2002
	E. A. Loeser	November 1965	December 1966
	Paul M. Maultsby	October 1995	October 2001
	Joy E. Paige	July 1999	June 2003
*	Don H. Perry	January 1993	June 2002
**	Robert A. Pittillo, Jr.	December 1963	June 1967
*/***	Leo E. Pucher	October 1963	June 1979
	Phillip O. Redwine	January 1970	June 1977
**	James O. Roberson	July 1996	June 2004
***	Carter S. Schaub	October 1963	June 1973
	Lee C. Smith	November 1965	August 1966
	Melba T. Sparrow	July 1987	April 1993
	Jack M. Stancil	July 1996	June 2000
*	James P. Swindell	July 1977	June 1997
	William F. Troxler	July 1979	June 1987
	Harold H. Webb	July 1973	June 1981
	Willi T. Webb	July 1991	June 1995
	James C. Wheeler	July 1990	December 1992
***	C. V. Whitley	October 1963	June 1965
	Cliffornia Wimberley	January 1979	June 1990
***	W.L. Woodard	July 1967	June 1975

\*Chairman

\*\*Vice-Chairman

\*\*\*Deceased

## **WAKE TECHNICAL COMMUNITY COLLEGE FOUNDATION, INC.**

Wake Technical Community College Foundation is a 501 (c) (3) nonprofit corporation established to serve as a conduit for a strong financial partnership with the private sector, supporting the community mission of Wake Technical Community College with gifts of cash and in-kind contributions of equipment and services that enhance the College's ability to fulfill its mission.

A 20-member Board of Directors comprised of community and business leaders in the Triangle area promote and administer a variety of funds from the private sector, including:

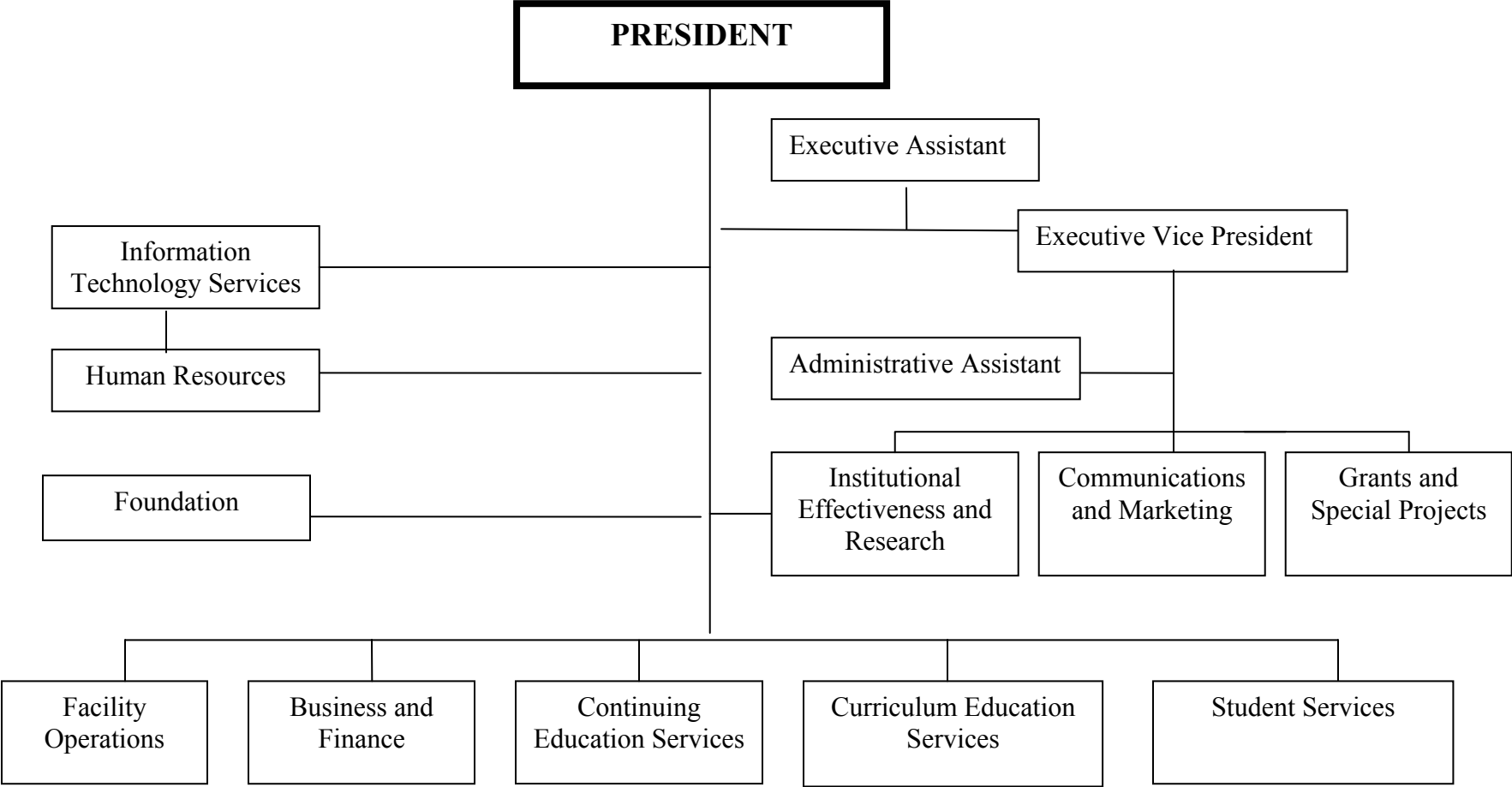
The Wake Tech Fund is the general fund that supports programs that receive limited or no support from traditional tax revenues, including institutional opportunities, student scholarships, financial aid grants, professional development needs of faculty and staff, the acquisition of state-of-the-art equipment and other areas that elevate the College's service role in the community to a greater prominence.

Donor-Restricted Funds benefit the interests of the donor as well as the College by providing restricted gifts to specific academic programs and scholarships that accommodate and address certain employment needs.

Endowment Funds are often established through various estate or major gifts which qualify for special tax consideration, creating permanent funds from which the interest income can be allocated to a specific area or serve as a source of supplemental revenues to state and local taxation.

Gifts-in-Kind from business and industry enhance and improve the quality of Wake Tech's instructional programs and labs with equipment that keeps technology current and instruction up to industry standards.

Since 1988, corporations, businesses, alumni, friends, trustees and employees have strengthened Wake Tech's programs with cash and noncash gifts to Wake Technical Community College Foundation totaling over \$8 million.



## MEMBERSHIPS, APPROVALS, AND ACCREDITATIONS

### **The College Is A Member Of:**

Accreditation Board for Engineering Technology  
American Association of Community Colleges  
American Association for Higher Education  
American Dental Association, Commission on Dental Accreditation  
American Mathematical Association of Two-Year Colleges  
American Society of Radiologic Technicians  
American Technical Education Association  
Association of Collegiate Schools of Architecture  
Association of Community College Trustees  
Association on Higher Education and Disability  
Carolinas Association of Collegiate Registrars and Admissions Officers  
Chamber of Commerce--Apex  
Chamber of Commerce--Cary  
Chamber of Commerce--Fuquay-Varina  
Chamber of Commerce--Garner  
Chamber of Commerce--Knightdale  
Chamber of Commerce--Morrisville  
Chamber of Commerce--Raleigh  
Chamber of Commerce--Wake Forest  
Chamber of Commerce--Zebulon  
College and University Mail Services  
College Board  
College News Association of the Carolinas  
Commission on Accreditation of Allied health Education Programs  
Community College Business Officials  
Community College Leadership Institute  
Community Education Network  
Cooperative Education Association, Inc.  
Council for Higher Education Accreditation  
Council for Resource Development  
Council on Hotel, Restaurant, and Institutional Education  
Joint Review Committee on Education in Radiologic Technology  
Keep North Carolina Clean and Beautiful  
National Accreditation Agency for Clinical Laboratory Sciences  
National Alliance of Community and Technical Colleges  
National Association for Adults with Special Learning Needs  
National Association for Foreign Student Affairs  
National Association of College and University Business Officers  
National Association of Colleges and Employers  
National Association for Student Financial Aid Administrators  
National College Testing Association  
National Commission for Cooperative Education  
National Council for Marketing and Public Relations  
National Council for Research and Planning



National Council for Student Development  
National Fire Protection Association  
National HEP Camp Association  
National Initiative for Leadership and Institutional Effectiveness  
National League for Nursing  
National Organization for Associate Degree Nursing  
National Prime Users Group  
National Restaurant Association  
National Safety Council  
North American Small Business International Trade Educators (NASBITE)  
North Carolina Association of Colleges and Universities  
North Carolina Association of Community College Business Officials  
North Carolina Association of Community College Trustees  
North Carolina Association of Coordinators of Veterans Affairs  
North Carolina Association on Higher Education and Disability  
North Carolina Bar Association  
North Carolina Chapter-Colleges and Universities personnel Association  
North Carolina Citizens for Business and Industry  
North Carolina Community College Student Development Personnel Association  
North Carolina Preservation Consortium (NCPC)  
North Carolina Restaurant Association  
Professional Construction Estimators Association  
Public Relations, Information, and Marketing Association  
Raleigh-Wake Personnel Association  
Society for Human Resource Management  
Southern Association of Collegiate Registrars and Admissions Officers  
Southern Association of Community, Junior, and Technical Colleges  
Southern Association of Student Employment Administrators  
Travel Council of North Carolina  
University and College Designers Association  
Wake County Interagency Council for the Homeless  
Wake County Interagency Council for Youth  
Water Environmental Federation Financial Management Association

**The College Is Approved By:**

Division of Vocational Rehabilitation  
Insurance Agents Pre-Licensing Education Program  
North Carolina Board of Nursing  
North Carolina Department of Insurance  
North Carolina Office of Emergency Services  
North Carolina Real Estate Licensing Board  
North Carolina State Approving Agency for Veterans Education and Training  
North Carolina State Board of Community Colleges

### **The College Is Accredited By:**

Wake Technical Community College is accredited by the Commission on Colleges of the Southern Association of Colleges and Schools (1866 Southern Lane, Decatur, Georgia 30033-4097; Telephone Number (404) 679-4501 to award the associate degree.\*

North Carolina Criminal Justice Education and Training Standards Commission

### **The College Has Certain Programs Accredited By:**

Accreditation Board for Engineering Technology\*\*

Commission on Dental Accreditation, American Dental Association\*\*\*

Committee on Allied Health Education and Accreditation:

American Association of Medical Assistant's Endowment

Joint Review Committee on Education in Radiologic Technology

National Accrediting Agency for Clinical Laboratory Sciences

North Carolina Board of Nursing

The Medical Assisting Program is accredited by the Commission on Accreditation of Allied Health Education Programs (CAAHEP); on recommendation of the Committee on Accreditation for Medical Assistant Education\*\*\*\*

\*When it is appropriate to refer to the status between Wake Technical Community College and the Commission on Colleges in catalogs, brochures, and advertisements, the following statement is to be used: **"Wake Technical Community College is accredited by the Commission on Colleges of the Southern Association of Colleges and Schools (1866 Southern Lane, Decatur, Georgia 30033-4097; Telephone Number (404) 679-4501) to award the associate degree."**

\*\*Five of Wake Technical Community College's Engineering Technology curriculums are nationally accredited by the Technology Accreditation Commission of the Accreditation Board for Engineering and Technology, Inc. The programs are Automation Engineering Technology, Civil, Computer, Electronics and Mechanical Engineering Technology.

\*\*\*The programs Dental Hygiene and Dental Assisting are accredited by the Commission on Dental Accreditation of the American Dental Association.

\*\*\*\*aka The Curriculum Review Board of the American Association of Medical Assistants' Endowment (AAMAE).

**PROGRAMS OFFERED**  
**at**  
**WAKE TECHNICAL COMMUNITY COLLEGE**

***Associate Degree Programs***

A degree is awarded for successful completion of a two-year program of study.

**General Education**

- B Associate in General Education A10300

**College/University Transfer**

- B Associate in Arts A10100  
B Associate in Science A10400

**Business Education**

- B Accounting A25100  
B Business Administration A25120  
B Business Administration/Electronic Commerce A25121  
B Business Administration/Human Resources Management A2512C  
B Criminal Justice Technology A55180  
D Culinary Technology A55200  
B Early Childhood Associate A55220  
D Hotel and Restaurant Management A25240  
D Medical Office Administration A25310  
D Office Systems Technology A25360  
D Office Systems Technology/Legal A2536A

**Computer Information Systems**

- B Computer Programming A25130  
B High Performance Computing A25230  
B Information Systems A25260  
B Information Systems/Helpdesk and Support A2526B  
B Internet Technologies A25290  
B Networking Technology A25340

**Engineering Technology**

- D Architectural Technology A40100  
B Automation/Robotics Technology A40120  
D Civil Engineering Technology A40140  
B Computer Engineering Technology A40160  
B Electronics Engineering Technology A40200

- D Electronics Engineering Technology/Instrumentation A4020A  
D Environmental Science Technology A20140  
B Industrial Engineering Technology A40240  
D Industrial Pharmaceutical Technology A20180  
D Landscape Architecture Technology A40260  
D Manufacturing Engineering Technology A40300  
D Manufacturing Technology/Plastics A5032A  
B Mechanical Engineering Technology A40320  
B Scientific Graphics Technology A40360  
D Surveying Technology A40380  
B Telecommunications and Network Engineering Technology A40400

**Health Sciences**

- D Associate Degree Nursing A45120  
D Dental Hygiene A45260  
D Emergency Medical Science A45340  
B General Occupational Technology A55280  
B Human Services Technology A45380  
B Human Services Technology/Developmental Disabilities A4538A  
B Human Services Technology/Substance Abuse A4538E  
D Medical Laboratory Technology A45420  
D Radiography A45700

**Vocational Technology**

- D Automotive Systems Technology A60160  
D Electrical/Electronics Technology A35220  
D Electronic Servicing Technology A50120  
D Heavy Equipment and Transport Technology A6024B  
D Industrial Systems Technology A50240  
D Machining Technology A50300  
D Machining Technology/Tool, Die, and Mold Making A5030A  
D Mechanical Drafting Technology A50340

---

***Diploma Programs***

A diploma is a one-year course of study focusing upon marketable skills

**Business Education**

- B Early Childhood Associate D55220A  
D Office Systems Technology D25360A

**Engineering Technology**

- D Manufacturing Technology/Plastics D5032AB

**Health Sciences**

- D Computed Tomography and Magnetic Resonance Imaging Technology D45200  
D Dental Assisting D45240  
B Medical Assisting D45400  
D Surgical Technology D45740

**Vocational Technology**

- D Air Conditioning, Heating, and Refrigeration Technology D35100A  
D Automotive Systems Technology D60160A  
D Electrical/Electronics Technology D35220A  
D Electronic Servicing Technology D50120A  
D Heavy Equipment and Transport Technology D6024BA  
D Industrial Systems Technology D50240A  
D Machining Technology D50300A  
D Mechanical Drafting Technology D50340A  
D Plumbing D35300  
D Welding Technology D50420A

***Legend***

- D = Day  
E = Evening  
B = Both  
\* = Weekend College

***More Programs Listed on Reverse***

## ***Certificate Programs***

A certificate is a short course of study, often less than one year, providing skills in a specific area.

### **Business Education**

- E Business Administration: Customer Service C25120B
- B Business Administration: Sales Development C25120A
- B Business Administration/Human Resources Management C2512CA
- E Culinary Technology C55200A
- B Early Childhood Associate C55220B
- D Medical Office Administration C25310A
- B Office Systems Technology: Word Processing C25360B
- E Real Estate C25400A
- E Real Estate Appraisal C25420

### **Computer Information Systems**

- B Computer Programming: C++ Programming C25130C
- B\* Computer Programming: Internet Programming C25130A
- B Computer Programming: Oracle Programming C25130D
- B\* Computer Programming: Visual Basic Programming C25130B
- B High Performance Computing: CCNP C25230C
- B Information Systems: Database Management C25260F
- B Information Systems: Graphics Design C25260C
- B Information Systems: Hardware Troubleshooting and Repair C25260G
- B Information Systems: M.O.U.S. C25260A
- B\* Information Systems: Networking C25260D
- B Information Systems: Spreadsheet Management C25260E
- B Information Systems: Web Services C25260H
- B Networking Technology: CISCO Certificate C25340C
- B Networking Technology: Internet Administration C25340D
- B Networking Technology: Linux/Red Hat Administration C25340F
- B Networking Technology: MCSA C25340G
- B\* Networking Technology: MCSE C25340A
- B Networking Technology: Network Security Administration C25340H
- B Networking Technology: Novell Administration C25340B
- B Networking Technology: SQL Server Administration C25340E

### **Engineering Technology**

- B Architectural Technology: Architectural CAD C40100A
- D Automation/Robotics Technology: Industrial Controls C40120A
- B Computer Engineering Technology: C Language Programming C40160B
- B Computer Engineering Technology: Personal Computer Specialist C40160C

- B Computer Engineering Technology: UNIX System Management and Programming C40160A
- B Electronics Engineering Technology: Basic Electronics C40200A
- B Industrial Engineering Technology: Industrial Management C40240A
- D Manufacturing Technology/Plastics: Plastics Extrusion C5032AC
- D Manufacturing Technology/Plastics: Plastics Injection Molding C5032AF
- D Manufacturing Technology/Plastics: Manufacturing Practices C5032AG
- D Manufacturing Technology/Plastics: Plastics Materials C5032AH
- B Telecommunications and Network Engineering Technology: Basic Telecommunications Electronics C40400A
- B Telecommunications and Network Engineering Technology: Data Networking Technology C40400B
- B Telecommunications and Network Engineering Technology: Telecommunications Switching C40400C

### **Health Sciences**

- D Computed Tomography Technology C45200A
- B Human Service Technology/Substance Abuse C4538EA
- D Magnetic Resonance Imaging Technology C45200B
- B Nursing Assistant C45480
- D Phlebotomy C45600

### **Vocational Technology**

- B Air Conditioning, Heating, and Refrigeration C35100B
- B Basic Law Enforcement Training C55120
- B Electrical/Electronics Technology: Commercial Wiring Methods C35220C
- B Electrical/Electronics Technology: Residential Wiring Methods C35220B
- B Heavy Equipment and Transport Technology: Fuel Injection, Electrical, and Electronics C6024BC
- B Heavy Equipment and Transport Technology: Hydraulics, Engines, and Transmissions C6024BB
- B Industrial Systems Technology C50240B
- B Machining Technology C50300B
- B Machining Technology: CNC Machining C50300C
- B Machining Technology/Tool, Die, and Mold Making: Mold Making C5030AA
- B Mechanical Drafting Technology C50340B
- D Plumbing Applications and Diagrams C35300A
- D Plumbing: Modern Plumbing Codes and Blueprint Reading C35300B
- B Welding Technology C50420B

---

## ***Other Programs***

### **Cooperative Agreement Programs**

A Cooperative Agreement program is one in which a student is concurrently enrolled in high school **and** Wake Tech.

- D Concurrent (Dual) Enrollment T90980
- D Huskins Bill T90970

### **Transitional Programs**

Transitional programs are designed to allow students to move from one stage of development to another.

- B Associate in General Education (undecided) A10300ZU
- D English as a Foreign Language (EFL) A10300ZQ

## **COLLEGE COMMITTEES**

### **Executive Council**

President, Chairman  
Vice Presidents  
Administrative Employees who report to the President  
Staff Council President  
Faculty Association President

### **Curriculum Education Services Council**

Vice President of Curriculum Education Services, Chairman  
Curriculum Education Deans  
Dean of Evening Programs

### **Continuing Education Services Council**

Vice President of Continuing Education Services, Chairman  
Continuing Education Deans  
Continuing Education Directors, Coordinators, and Instructional Supervisors are invited and encouraged to attend meetings.

### **Planning Council**

President, Chairman  
Executive Council  
Faculty Association Representatives  
Staff Council Representative  
Basic Skills Representatives

### **Staff Council**

Staff Council President  
One representative for every 10 eligible staff employees in a given service area

### **Drug and Substance Abuse Council**

Department of Criminal Justice faculty member, Chairman  
Human Resources Specialist  
Dean of Students  
Manager of Security  
One Counselor  
One representative from Continuing Education Division  
One faculty member from each Curriculum Division

### **Curriculum Committee**

Vice President of Curriculum Education Services, Chairman  
Curriculum Education Deans  
The Registrar  
Director of Cooperative Education

### **Distance Education Committee**

Dean of Academic Support Division, Chairperson  
Vice President of Curriculum Education Services  
Vice President of Information Technology Services  
Associate Vice President of Institutional Effectiveness and Research  
Assistant Coordinator of Distance Education  
Continuing Education Representative  
Four (4) faculty members

### **Health, Safety, and Security Committee**

Manager of Security, Chairman  
Facilities Manager  
Dean of Students  
Dean of Evening Programs  
Business Manager  
One student recommended by the Student Government Association  
Two instructors from the Main Campus  
One instructor from the Health Education Campus  
One Representative recommended by the Continuing Education Services Council

### **Information Technology Services Advisory Committee**

Vice President of Information Technology Services, Chairman  
Vice President of Curriculum Education Services  
Vice President of Continuing Education Services  
Chief Business Officer  
The Registrar  
Curriculum Deans

### **Institutional Effectiveness (IE) Advisory Committee**

Associate Vice President of Institutional Effectiveness and Research, Chairman  
Curriculum Education Services SGA President  
Continuing Education Representative  
Student Services Representative  
Administrative Services Representative  
Adult Education Center Campus Representative  
Health Science Campus Representative  
Faculty Association Representative  
Staff Council Representative

### **Faculty Professional Development Committee**

Dean of Academic Support Division, Chairperson  
Representatives from each of the curriculum divisions

### **Tuition Assistance Committee**

Executive Director of the Wake Tech Foundation, Inc., Chairman  
Vice President of Curriculum Education Services  
Associate Vice President of Institutional Effectiveness and Research  
President of the Faculty Association  
President of the Staff Council  
Vice President of Continuing Education Services

### **Grants Committee**

Associate Vice President (Office of the Executive Vice President), Chairman  
Vice President of Curriculum Education Services  
Vice President of Student Services  
Vice President of Continuing Education Services  
Vice President of Information Technology Services  
Facility Engineering Officer  
Chief Financial Officer  
Dean of Grants Development and Special Projects  
Executive Director of Wake Tech Foundation, Inc.  
Dean of Academic Support Division  
Faculty Association Representative

### **Traffic Appeals Review Board**

Executive Vice President or his designee, Chairman  
Faculty Association Representative  
Staff Council Representative  
Student Government Association Representatives (2)

### **Faculty Association**

One faculty member serves as President, Vice President, Secretary

The Faculty Association is open to all Wake Tech full-time faculty

### **Quality Enhancement Plan Committee**

Dean of Planning and Accreditation, Chairman  
Executive Council  
Associate Vice President of Institutional Effectiveness and Research  
Associate Vice President (Executive Vice President's Office)  
Manager of Publications, Marketing, and Community Relations  
Dean of Grants Development and Special Projects

# WAKE TECHNICAL COMMUNITY COLLEGE

## FUNDING GROWTH LAST 10 YEARS

### Educational and General Expenditures by source of Funds

---

Year	State	%	County	%	Other	%	Total
1995-96	18,986,857	73	4,909,382	19	2,011,909	8	25,907,329
1996-97	19,817,427	71	5,886,100	21	2,128,826	8	27,832,353
1997-98	21,128,693	71	6,435,000	21	2,333,350	8	29,987,043
1998-99	23,827,482	72	6,800,000	20	2,594,776	8	33,222,258
1999-00	27,968,018	72	7,202,000	19	3,383,705	9	38,553,723
2000-01	31,730,476	74	7,810,000	18	3,496,031	8	43,036,507
2001-02	34,335,261	72.4	8,495,000	17.9	4,618,009	9.7	47,448,270
2002-03	36,584,315	70.0	8,495,000	16.2	7,202,299	13.8	52,281,614
2003-04	38,084,456	69.8	8,600,000	15.7	7,901,522	14.5	54,585,978
2004-05	42,002,267	65.8	11,089,000	17.4	10,705,172	16.8	63,796,439

Office of Research (Does not include Capital and Construction Budgets)

MARCH 2004

Source: Wake Technical Community College Controller's Office Current Operating Budget



**SERVICE AREA:  
WAKE COUNTY**

## DEMOGRAPHIC INDICATORS FOR WAKE COUNTY

<b>LAND AREA IN SQUARE MILES</b>	833.98
<b>Density (Persons per square mile - 2003)</b>	838.7

### PERSONS (July 2003)

Total County Population	699,503	
Total Incorporated Population	529,421	75.6%
Total Unincorporated Population	170,082	24.4%
18 and Over	518,342	

---

### MUNICIPAL POPULATION, 2000-2003

<b>Municipality</b>	<b>2000 Census</b>	<b>July 2003</b>
APEX	20,212	24,701
CARY	94,536	106,304
FUQUAY VARINA	7,898	9,726
GARNER	17,757	20,144
HOLLY SPRINGS	9,192	12,375
KNIGHTDALE	5,958	6,484
MORRISVILLE	5,208	10,721
RALEIGH	276,093	313,004
ROLESVILLE	907	985
WAKE FOREST	12,588	16,490
WENDELL	4,247	4,599
ZEBULON	4,046	4,336

OFFICE OF RESEARCH/SOURCE: N.C. OFFICE OF STATE BUDGET, AND MANAGEMENT/September 2004  
[www.osbm.state.nc.us](http://www.osbm.state.nc.us)

# STUDENTS

# WAKE TECHNICAL COMMUNITY COLLEGE

## UNDUPLICATED HEADCOUNT

### LAST 10 YEARS

---

Year	Continuing Education	Curriculum	Total
1994-1995	32,315	12,228	44,543
1995-1996	31,948	11,988	43,936
1996-1997	32,606	11,622	44,228
1997-1998*	33,165	10,905	44,070
1998-1999	38,432	12,083	50,515
1999-2000	35,808	13,343	49,151
2000-2001	34,154	14,214	48,368
2001-2002	34,621	14,634	49,255
2002-2003	36,205	15,238	51,443
2003-2004	35,974	16,414	52,388

\* 1997-1998 Semester system began

MARCH 2004

SOURCE: ANNUAL STATISTICAL REPORTS, 2004 FACT BOOK, SYSTEM ANNUAL REPORTS, NCCCS

# WAKE TECHNICAL COMMUNITY COLLEGE

## AVERAGE ANNUAL FULL TIME EQUIVALENT (FTE)

Academic Years	FTE
1994-1995	5,809
1995-1996	5,908
1996-1997	5,668
1997-1998	6,848
1998-1999	7,745
1999-2000	8,292
2000-2001	8,550
2001-2002	9,150
2002-2003	9,757
2003-2004	10,047

## AVERAGE COST PER FTE ANALYSIS YEAR ENDING JUNE 30, 2004

	Wake Tech	System
Instruction-Curriculum *	2,596.73	2,575.27
Instruction Non-Curriculum **	2,603.47	2,803.60
Student Support	304.17	300.05
Plant Operation & Maintenance	0	89.85
Academic Support	556.83	421.62
Institutional Support	349.62	673.50

\* Average Based on Curriculum FTE only

\*\* Average Based on Continuing Education FTE – Including Non-Budget FTE

All averages (except as noted) are based on annualized average FTE earned with the exception of self-supporting FTE.

SOURCE: (AVERAGE COST PER FTE ANALYSIS) NCCCS FACT BOOK 2005  
(Current Operating / 112 Report Expenditures: Year Ending June 30, 2004)

# **WAKE TECHNICAL COMMUNITY COLLEGE**

## **CURRICULUM FTE LAST 5 YEARS**

---

<b>Year</b>	<b>Fall</b>	<b>Spring</b>	<b>Summer</b>
1999-2000	3,029	2,903	875
2000-2001	3,281	3,382	1,193
2001-2002	3,579	3,382	1,193
2002-2003	3,750	3,661	1,202
2003-2004	3,885	3,753	1,161

JANUARY 2005  
SOURCE: WAKE TECHNICAL COMMUNITY COLLEGE REGISTRAR

# WAKE TECHNICAL COMMUNITY COLLEGE

## STUDENT FINANCIAL AID

### 2003 - 2004

GRANTS, GIFT AWARDS SCHOLARSHIP	NUMBER OF STUDENTS	TOTAL DOLLARS	AVERAGE PER RECIPIENT
FSEOG	36	44,000	1,222
PELL GRANT TOTAL	2,519	5,493,177	2,180
<b>EMPLOYMENT</b>			
FWS	51	75,445	1,479
VOCATIONAL REHABILITATION	87	73,025	839
VETERANS ADMINISTRATION	73	91,845	1,258
JOB TRAINING PARTNERSHIP WIA, NAFTA	303	493,438	1,628
<b>EXTERNAL SOURCES OF AID</b>			
LOANS (STAFFORD)			
SUBSIDIZED	609	1,334,818	2,191
UNSUBSIDIZED	564	1,572,812	2,788
FPLUS	30	136,394	4,546
NCNESLP	65	51,200	787
NCHSM	6	18,000	3,000
NCSIG	98	51,450	525
NCCC GRANT	305	332,062	1,088
<b>TOTAL</b>	<b>4,743</b>	<b>9,767,666</b>	<b>2,059</b>

Abbreviations used in this report are:

FWS – College Work Study      FPLUS - Federal Plus      FSEOG – Federal Supplemental Education Opportunity Grant  
 HPEAA – Health Professions Education Assistance Act      HSM – Health, Science & Mathematics Student Loan Program  
 JTPA – Job Training Partnership Act      NCCC - North Carolina Community College  
 NCLTG – North Carolina Legislative Tuition Grants      NCSIG – North Carolina Student Incentive Grants  
 NESLP – Nurse Education Scholarship Loan Program      NSP – Nurse Scholars Program  
 NTA – Nurse Training Act      SCSF – State Contractual Scholarship Fund

SOURCE: NCHED A-10

**WAKE TECHNICAL COMMUNITY COLLEGE**  
**NUMBER OF GRADUATES PER YEAR LAST 5 YEARS**  
**CUMULATIVE TOTAL**

---

YEAR	DEGREE	DIPLOMA	CERTIFICATE	TOTAL
1999-2000	561	90	495	1,146
2000-2001	595	95	524	1,214
2001-2002	709	107	432	1,248
2002-2003	820	142	395	1,357
2003-2004	837	107	352	1,296

OFFICE OF RESEARCH  
JANUARY 2005  
SOURCE: WAKE TECHNICAL COMMUNITY COLLEGE REGISTRAR



# **WAKE TECHNICAL COMMUNITY COLLEGE**

## **ADULT HIGH SCHOOL GRADUATES LAST 5 YEARS**

---

<b>YEAR</b>	<b>NUMBER GRADUATES</b>
1999-2000	66
2000-2001	71
2001-2002	59
2002-2003	49
2003-2004	60

---

## **GED GRADUATES LAST 5 YEARS**

<b>YEAR</b>	<b>NUMBER GRADUATES</b>
1999-2000	642
2000-2001	734
2001-2002	731
2002-2003	505
2003-2004	608

OFFICE OF RESEARCH  
JANUARY 2005  
SOURCE: LEIS REPORT

# WAKE TECHNICAL COMMUNITY COLLEGE

## PASSING RATES FOR LICENSURE EXAMS

### 2003-2004

---

CURRICULUM	NUMBER TESTED	PERCENT PASSED
Nursing	33	94%
BLET	47	98%
Dental Assisting	19	100%
Dental Hygiene	13	100%
Medical Laboratory Technology		
American Society for Clinical Pathology	4	100%
National Cert. Agency for Laboratory Personnel	2	100%
Phlebotomy		
American Society for Clinical Pathology	6	100%
National Certification Agency for Phlebotomy	4	100%
Medical Assisting	19	89.4%
Emergency Medical Technician (EMT)		
EMT	116	94%
EMT-1	27	93%
EMT-P	12	75%
Real Estate	45	73%
Radiography	16	100%
Nursing Assisting	48	100%

OFFICE OF RESEARCH  
MARCH 2004  
SOURCE: NCCCS Critical Success Factors 2004

## GRADUATES BY CURRICULUM

### ARTS AND SCIENCES

### GRADUATES 2003-2004

A10100	<b>Associate in Arts Degree</b> (for transfer to university liberal arts programs)	238
A10400	<b>Associate in Science Degree</b> (for transfer to university science and engineering programs)	54
A10300	<b>Associate in General Education Degree</b>	20

### BUSINESS EDUCATION

#### **Associate in Applied Science Degree:**

A25100	Accounting	18
A25120	Business Administration	27
A2512C	Business Administration/Human Resources Management	13
A55180	Criminal Justice Technology	24
A55200	Culinary Technology	13
A55220	Early Childhood Associate	20
A25240	Hotel and Restaurant Management	5
A25360	Office Systems Technology	13
A2536A	Office Systems Technology/Legal	2
A25310	Medical Office Administration	3
A2512I	Business Administration/electronic Commerce	1

#### **Diploma:**

D55220A	Early Childhood Associate	10
D25360A	Office Systems Technology	5

#### **Certificate:**

C25120A	Business Administration: Sales Development	1
C2512CA	Business Administration: Human Resources Management	12
C55220B	Early Childhood Associate	98
C25360B	Office Systems Technology: Word Processing	9
C25400A	Real Estate	0
C25420	Real Estate Appraisal	0

### ENGINEERING TECHNOLOGY

#### **Associate in Applied Science Degree:**

A40100	Architectural Technology	14
A40120	Automation/Robotics Technology	3
A40140	Civil Engineering Technology	4
A40160	Computer Engineering Technology	8
A40200	Electronics Engineering Technology	9
A4020A	Electronics Engineering Technology/Instrumentation	2
A20140	Environmental Science Technology	5

A40240	Industrial Engineering Technology	3
A20180	Industrial Pharmaceutical Technology	24
		<b><u>GRADUATES 2003-2004</u></b>
A40260	Landscape Architecture Technology	3
A40300	Manufacturing Engineering Technology	2
A5032A	Manufacturing Technology/Plastics	1
A40320	Mechanical Engineering Technology	8
A40380	Surveying Technology	1
A40400	Telecommunications and Network Engineering Technology	6

**Certificate:**

C40100A	Architectural Technology: Architectural CAD	12
C40120A	Automation/Engineering Technology: Industrial Controls	0
C40160B	Computer Engineering Technology: C Language Programming	0
C40160C	Computer Engineering Technology: Personal Computer Specialist	4
C40160A	Computer Engineering Technology: UNIX System Management and Programming	0
C40200A	Electronics Engineering Technology: Basic Electronics	5
C40240A	Industrial Engineering Technology: Industrial Management	0
C40400A	Telecommunications & Network Engineering Technology: Basic Telecommunications	1
C40400B	Telecommunications & Network Engineering Technology: Data Networking	2
C40400C	Telecommunications & Network Engineering Tech: Telecommunications Switching	1
C5032AC	Manufacturing Technology/Plastics: Plastics Extrusion	0
C5032AF	Manufacturing Technology/Plastics: Plastics Injection	0
C5032AG	Manufacturing Technology/Plastics: Manufacturing Practices	0
C5032AH	Manufacturing Technology/Plastics: Plastics Materials	0

**COMPUTER INFORMATION SYSTEMS**

**Associate in Applied Science Degree:**

A25260	Information Systems	22
A2526B	Information Systems: Helpdesk and Support Technology	0
A25130	Computer Programming	11
A25230	High Performance Computing	1
A25290	Internet Technologies	22
A25340	Networking Technology	48
A25430	Support Technologies	8

**Diploma:**

D25260	Information Systems (Prison)	8
--------	------------------------------	---

**Certificate:**

C25260A	Information Systems: Applications	13
C25260F	Information Systems: Database Management	4
C25260C	Information Systems: Desktop Publishing	6
C25260G	Information Systems: Hardware Troubleshooting/Repair	8
C25260D	Information Systems: Networking	7

C25260E	Information Systems: Spreadsheet Management	14
C25260B	Information Systems: Technical Word Processing	1
C25130C	Information Systems/Programming: C++ Programming	2
C25130D	Information Systems/Programming: Oracle Programming	15
C25130A	Information Systems/Programming: Internet Programming	6
C25130B	Information Systems/Programming: Visual Basic Programming	4

## **HEALTH SCIENCES**

### **Associate in Applied Science Degree:**

A45340	Emergency Medical Science	14
A45380	Human Services Technology	24
A4538A	Human Services Technology/Developmental Disabilities	1
A4538E	Human Services Technology/Substance Abuse	5
A45420	Medical Laboratory Technology	5
A45120	Nursing	33
A45700	Radiography	15
A45260	Dental Hygiene	15
A55280	General Occupational Technology	0

## **GRADUATES 2003-2004**

### **Diploma:**

D45240	Dental Assisting	12
D45400	Medical Assisting	26
D45200	Computed Tomography and Magnetic Resonance Imaging Technology	1
D45740	Surgical Technology	7

### **Certificate:**

C45200	Computed Tomography Technology	3
C45200B	Magnetic Resonance Imaging Technology	3
C45480	Nursing Assistant	0
C45600	Phlebotomy	13

## **VOCATIONAL TECHNOLOGY**

### **Associate in Applied Science Degree:**

A35220	Electrical/Electronics Technology	6
A4538EA	Human Services Technology: Substance Abuse	0
A50120	Electronic Servicing Technology	5
A6024B	Heavy Equipment and Transport Technology/Construction Equipment Systems	14
A50240	Industrial Maintenance Technology	2
A50300	Machining Technology	0
A5030A	Machining Technology/Tool, Die and Mold Making	4
A50340	Mechanical Drafting Technology	4
A60160	Automotive Systems Technology	9

### **Diploma:**

D35100A	Air Conditioning, Heating and Refrigeration Technology	12
D60160A	Automotive Systems Technology	8
D35220A	Electrical/Electronics Technology	4
D50120A	Electronic Servicing Technology	0
D6024BA	Heavy Equipment and Transport Technology/Construction Equipment Systems	1
D50240A	Industrial Maintenance Technology	1
D50300A	Machining Technology	1
D50340A	Mechanical Drafting Technology	1
D35300	Plumbing	4
D50420A	Welding Technology	3

**Certificate:**

C35100B	Air Conditioning, Heating and Refrigeration Technology	15
C55120	Basic Law Enforcement Training	24
C35220C	Electrical/Electronics Technology: Commercial Wiring Methods	3
C35220B	Electrical/Electronics Technology: Residential Wiring Methods	6
C6024BB	Heavy Equipment and Transport Technology/Construction Equipment Systems: Hydraulics, Engines and Transmissions	0
C6024BC	Heavy Equipment and Transport Technology/Construction Equipment Systems: Fuel Injection, Electrical and Electronics	0
C50300B	Machining Technology	2
C5030AA	Machining Technology/Tool, Die and Mold Making: Mold Making	0
C50340B	Mechanical Drafting Technology	5
C35300B	Plumbing: Modern Plumbing, Codes and Blueprint Reading	0
C35300A	Plumbing: Plumbing Applications and Diagrams	0
C50420B	Welding Technology	2

## 2004 Average Starting Salaries

### A.A.S. Degrees

<b>Business Education Division</b>	<b>Average</b>	<b>Starting Range</b>	<b>#Return</b>
Accounting	33,800	22,000-47,000	6
Business Administration	35,000	15,000-47,000	9
BA/Human Resource Mgmt	39,300	30,000-44,000	3
Culinary Technology	24,000	22,000-26,000	3
Criminal Justice Technology	27,700	24,000-32,000	6
Early Childhood Associate	22,300	15,000-28,000	12
Hotel/Restaurant Management	16,500	15,000-18,000	2
Medical Office Administration	16,000		1
Office Systems Technology	19,300	15,000-26,000	4
<b>Computer&amp; Information Technology Division</b>			
Computer Programming	37,000	32,000-47,000	3
Information Systems	39,600	15,000-47,000	7
Information Systems Support Technologies	18,000		1
Internet Technologies	30,000		1
Networking Technology	31,600	20,000-47,000	7
<b>Engineering Technology Division</b>			
Architectural Technology	25,200	22,000-28,000	5 -
Automation Engineering Technology	47,000		1 -
Civil Engineering Technology	24,000	23,000-25,000	1 -
Computer Engineering Technology	30,000		1 -
Electronics Engineering Technology	34,000		1 -
Industrial Pharmaceutical Technology	31,000	15,000-44,000	3 -
Landscaping Architecture Technology	34,000		1 -
Mechanical Engineering Technology	34,300	28,000-47,000	4 -
Telecom & Networking Engineer Technology	47,000		1 -
<b>Health Sciences Division</b>			
Nursing	36,700	30,000-47,000	29
Computer Tomography & Mag Res Imag	47,000		1
Dental Assisting	29,800	24,000-34,000	9
Dental Hygiene	46,000	44,000-47,000	5
Emergency Medical Science	28,800	15,000-34,000	9
Human Services Technology	22,200	15,000-28,000	5
Human Services Technology/Substance Abuse	22,000 -	16,000-26,000	3
Medical Assisting	23,300	20,000-28,000	6
Radiography	37,100	32,000-44,000	11
Surgical Technology	28,000	24,000-32,000	2
<b>Vocational Education Division</b>			
Automotive Systems Technology	23,000	18,000-28,000	2 -
Electrical/Electronics Technology	30,000	22,000-46,000	4 -
Electronics Servicing Technology	31,000	16,000-46,000	2 -
HEATT/John Deere	18,000	16,000-20,000	2 -
Heavy Equipment & Transport Technology	36,500	26,000-47,000	2 -
Machining Tech/Tool, Die & Mold Making	15,000		1 -
Mechanical Drafting Technology	40,000		1 -

Figures taken from 2004 Graduate Placement Survey.

Curriculums not represented had 0% return for salary information.

Unrelated and part-time employment are not calculated in ranges and averages.

Duplication of salaries could be recorded since multiple copies of the survey were mailed.

Surveys were not mailed out from Job Placement but are maintained in that Office.

**2004 Average Starting Salaries**  
**Certificates or Diplomas**

<b>Business Education Division</b>		<b>Average</b>	<b>Starting Range</b>	<b>#Return</b>
Business Admin/Human Resource Mgmt (C) -	41,000		32,000-47,000	3 -
Early Childhood Associate (C) -	20,300		15,000-30,000	9 -
Early Childhood Associate (D) -	24,700		18,000-40,000	7 -
Office Systems Technology (D) -	40,000			1 -
<b>Computer&amp; Information Technology Division</b>				
Computer Programming/C++ Programming (C)	32,000			1 -
Computer Programming/Oracle Developer (C)	46,500		46,000-47,000	2 -
Computer Programming/Oracle Prog (C)	35,400		30,000-47,000	1 -
Computer Programming/Internet Prog (C)	36,000			1 -
Computer Programming/Visual Basic Prog (C)	32,000			1 -
High Performance Comp/Bioinformatics (C)	37,000		28,000-46,000	2
Information Systems/Graphics Design (C)	38,000			1 -
Information Systems/Networking (C)	32,000			1 -
Information Systems/Spreadsheet Mgt (C)	18,000			1 -
Information Systems/Web Services (C)	40,000			1 -
Networking Technology/Novell Admin (C)	47,000			1 -
<b>Health Sciences Division</b>				
Human Services Tech/Substance Abuse (C)	33,700		26,000-47,000 -	3 -
Magnetic Resonance Imaging Technology (C)	44,000			1 -
<b>Vocational Education Division</b>				
Air Conditioning, Heating, & Refrigeration (C) -	47,000			3 -
Automotive Systems Technology (D) -	32,000		20,000-40,000	3 -
Basic Law Enforcement (C) -	32,100		22,000-47,000	7 -
Electrical/Elect Tech/Resid Wiring Meth (C) -	24,800		15,000-30,000	4 -
Mechanical Drafting Technology (C) -	20,000			1 -

Figures taken from 2004 Graduate Placement Survey.

Curriculums not represented had 0% return for salary information.

Unrelated and part-time employment are not calculated in ranges and averages.

Duplication of salaries could be recorded since multiple copies of the survey were mailed.

Surveys were not mailed out from Job Placement but are maintained in that Office.



PERCENT OF 2002-03 COLLEGE TRANSFER STUDENTS WITH A  
GPA OF >= 2.0 AFTER TWO SEMESTERS AT A UNC INSTITUTION

INSTITUTION	TOTAL FTE	24 or More Semester Hours		Associate Degree Recipient		Total	
		Number	Percent >=2.0	Number	Percent >=2.0	Number	Percent >=2.0
Alamance CC	3,676	53	86.8%	10	90.0%	63	87.3%
Asheville-Buncombe TCC	5,373	53	90.6%	54	88.9%	107	89.7%
Beaufort County CC	1,830	21	76.2%	9	88.9%	30	80.0%
Bladen CC	1,533	28	78.6%	4	75.0%	32	78.2%
Blue Ridge CC	2,438	17	82.4%	**	**	17	82.4%
Brunswick CC	1,321	11	54.6%	20	95.0%	31	80.7%
Caldwell CC & TI	3,625	89	86.5%	14	100.0%	103	88.3%
Cape Fear CC	6,518	159	82.4%	186	85.0%	345	83.8%
Carteret CC	1,722	26	92.3%	16	87.5%	42	90.5%
Catawba Valley CC	4,485	54	70.4%	13	84.6%	67	73.2%
Central Carolina CC	5,174	30	83.3%	25	92.0%	55	87.3%
Central Piedmont CC*	12,113	285	79.0%	89	83.2%	374	80.0%
Cleveland CC	2,693	13	38.5%	3	66.7%	16	43.8%
Coastal Carolina CC	4,170	48	87.5%	41	95.1%	89	91.0%
College of The Albemarle	2,236	24	79.2%	31	90.3%	55	85.5%
Craven CC	2,688	28	78.6%	18	83.3%	46	80.4%
Davidson County CC*	3,339	35	85.7%	16	100.0%	51	90.2%
Durham TCC	4,441	65	81.5%	36	94.4%	101	86.1%
Edgecombe CC	2,459	4	100.0%	3	66.7%	7	85.7%
Fayetteville TCC	10,076	87	86.2%	39	82.1%	126	84.9%
Forsyth TCC*	6,319	92	77.2%	29	89.7%	121	80.2%
Gaston College	4,407	68	85.3%	16	87.5%	84	85.7%
Guilford TCC	7,864	139	84.2%	4	75.0%	143	83.9%
Halifax CC*	1,783	**	**	13	84.6%	13	84.6%
Haywood CC	1,853	11	81.8%	15	73.3%	26	76.9%
Isothermal CC	2,196	15	66.7%	23	87.0%	38	79.0%
James Sprunt CC*	1,446	20	95.0%	12	91.7%	32	93.8%
Johnston CC	3,606	26	69.2%	13	76.9%	39	71.8%
Lenoir CC	3,048	19	57.9%	29	75.9%	48	68.8%
Martin CC	1,080	11	90.9%	4	100.0%	15	93.3%
Mayland CC	1,458	6	50.0%	4	100.0%	10	70.0%
McDowell TCC	1,319	10	50.0%	17	76.5%	27	66.7%
Mitchell CC	2,218	25	84.0%	16	81.3%	41	82.9%
Montgomery CC	900			**	**	**	**
Nash CC	2,357	26	84.6%	6	83.3%	32	84.4%
Pamlico CC	487	**	**			**	**
Piedmont CC	2,222	16	68.8%	4	100.0%	20	75.0%
Pitt CC	5,227	84	79.8%	33	93.9%	117	83.8%
Randolph CC	2,544	23	91.3%	12	83.3%	35	88.6%
Richmond CC	1,973	18	77.8%	12	91.7%	30	83.4%
Roanoke-Chowan CC	996	9	55.6%	3	100.0%	12	66.7%
Robeson CC	3,460	11	90.9%	3	66.7%	14	85.7%
Rockingham CC	2,162	18	72.2%	22	90.9%	40	82.5%
Rowan-Cabarrus CC	4,854	70	75.7%	23	82.6%	93	77.4%
Sampson CC	1,722	22	86.4%	5	100.0%	27	88.9%
Sandhills CC*	3,808	26	92.3%	6	100.0%	32	93.7%
South Piedmont*	1,910	18	77.8%	**	**	18	77.8%
Southeastern CC	2,429	31	74.2%	27	85.2%	58	79.3%
Southwestern CC	2,130	26	69.2%	23	78.3%	49	73.5%
Stanly CC*	2,230	9	88.9%	12	91.7%	21	90.5%
Surry CC*	3,263	85	83.6%	54	96.3%	139	88.5%
Tri-County CC	1,255	18	88.9%	11	100.0%	29	93.1%
Vance-Granville CC	4,440	23	95.7%	10	90.0%	33	94.0%
Wake TCC	10,047	261	84.7%	113	90.3%	374	86.4%
Wayne CC	3,503	64	71.9%	25	96.0%	89	78.7%
Western Piedmont CC*	2,994	37	83.8%	22	95.5%	59	88.2%
Wilkes CC	3,083	35	77.1%	37	83.8%	72	80.5%
Wilson TCC	2,186	11	81.8%	**	**	11	81.8%
<b>System Totals</b>	192,693	2,513	81.0%	1,285	87.2%	3,798	83.1%

\*Includes data from private colleges and universities.

\*\*Number too small to report without violating students'privacy.

# **CONTINUING EDUCATION**

## WAKE TECHNICAL COMMUNITY COLLEGE

### FULL-TIME EQUIVALENCY (FTE) DEFINITIONS

CURRICULUM FTE: Includes College Transfer, General Education, Technical, and Vocational Education.

EXTENSION FTE: Includes Academic, Adult High School, Avocational, Occupational, Practical Skills, ABE, Compensatory Education, Learning Lab (ILC), New and Expanding Industry, Human Resource Development, and Self-Supporting.

BASIC SKILLS (LITERACY) FTE - Includes Adult High School, ABE, and Compensatory Education

HUMAN RESOURCES DEVELOPMENT FTE - Includes Human Resources

SMALL BUSINESS CENTER FTE - Includes New and Expanding Industry, and Self-Supporting.

REGULAR BUDGET EXTENSION - Includes Adult High School, Occupational, Adult Basic Education, and Compensatory Education.

NON-REGULAR BUDGET EXTENSION - Includes Learning Laboratory, New and Expanding Industry, Human Resource Development, And Self-Supporting.

COMMUNITY SERVICE - Includes Academic, Avocational, Practical Skills, and Cultural and Civic Activities.

OCCUPATIONAL - Includes Occupational only. Occupational Extension Programs consist of single courses, complete in themselves, designed for the specific purposes of training an individual for employment, upgrading skills of persons presently employed, and retraining others for new employment in occupational fields.

SELF-SUPPORTING - Includes courses which the College may provide at the request of the community but for which the College receives no budgetary credit. The cost of such activities are borne exclusively by the participants or some contracting agency.

SPECIAL NOTE: Wake Tech and the North Carolina Community College System changed from the Quarter System to the Semester System beginning with Fall Semester 1997. The Summer of 1997 was a period of transition. Therefore, enrollment and FTE numbers for the Summer of 1997 were diminished.

When comparing annual enrollment and FTE figures for the Quarter System with the Semester System, you must remember to average the Quarter System numbers and sum the Semester System numbers.

Main Campus = 401 South Campus

AEC = Adult Education Center (News & Observer)

HSC = Health Sciences Campus

SPDC = State Personnel Development Center

Office of Research

PROGRESS OF BASIC SKILLS STUDENTS, 2003-2004

INSTITUTIONS	SYSTEM FTE	TOTAL SERVED IN LITERACY	COMPLETED A LEVEL	PROGRESSING SAME LEVEL	MOVED TO A HIGHER LEVEL	EXIT NON-COMPLETER	COMPOSITE PROGRESS MEASURE
Alamance CC	3,676	3,255	9%	58%	20%	13%	87%
Asheville-Buncombe TCC	5,373	3,908	6%	58%	19%	16%	84%
Beaufort County CC	1,830	1,087	6%	50%	24%	21%	79%
Bladen CC	1,533	726	11%	40%	25%	24%	76%
Blue Ridge CC	2,438	1,409	13%	45%	21%	21%	79%
Brunswick CC	1,321	900	9%	61%	24%	6%	94%
Caldwell CC & TI	3,625	2,377	10%	52%	14%	24%	76%
Cape Fear CC	6,518	3,243	3%	52%	23%	22%	78%
Carteret CC	1,722	892	15%	43%	20%	21%	79%
Catawba Valley CC	4,485	3,125	9%	57%	17%	17%	83%
Central Carolina CC	5,174	4,801	12%	62%	16%	10%	90%
Central Piedmont CC	12,113	10,952	13%	40%	26%	21%	79%
Cleveland CC	2,693	694	23%	39%	22%	16%	84%
Coastal Carolina CC	4,170	3,987	9%	50%	27%	15%	85%
College of The Albemarle	2,236	2,747	11%	56%	11%	22%	78%
Craven CC	2,688	1,759	6%	54%	22%	18%	82%
Davidson County CC	3,339	3,256	10%	40%	36%	14%	86%
Durham TCC	4,441	4,333	4%	52%	19%	24%	76%
Edgecombe CC	2,459	1,955	6%	57%	14%	23%	77%
Fayetteville TCC	10,076	6,604	4%	47%	29%	20%	80%
Forsyth TCC	6,319	5,080	7%	40%	29%	24%	76%
Gaston College	4,407	2,617	13%	37%	28%	22%	78%
Guilford TCC	7,864	5,842	6%	50%	21%	22%	78%
Halifax CC	1,783	1,168	8%	49%	24%	19%	81%
Haywood CC	1,853	954	11%	52%	18%	19%	81%
Isothermal CC	2,196	1,727	8%	64%	19%	10%	90%
James Sprunt CC	1,446	890	12%	57%	12%	19%	81%
Johnston CC	3,606	1,950	12%	50%	13%	26%	74%
Lenoir CC	3,048	2,351	6%	58%	18%	18%	82%
Martin CC	1,080	811	8%	61%	24%	7%	93%
Mayland CC	1,458	1,197	12%	45%	27%	16%	84%
McDowell TCC	1,319	894	9%	42%	24%	25%	75%
Mitchell CC	2,218	2,218	14%	46%	16%	24%	76%
Montgomery CC	900	546	3%	40%	21%	37%	63%
Nash CC	2,357	1,732	3%	55%	22%	20%	80%
Pamlico CC	487	352	6%	36%	34%	24%	76%
Piedmont CC	2,222	1,101	15%	46%	17%	22%	78%
Pitt CC	5,227	2,613	7%	50%	18%	25%	75%
Randolph CC	2,544	2,235	5%	67%	18%	10%	90%
Richmond CC	1,973	1,913	6%	51%	21%	21%	79%
Roanoke-Chowan CC	996	714	6%	59%	8%	26%	74%
Robeson CC	3,460	3,021	5%	53%	23%	19%	81%
Rockingham CC	2,162	1,019	11%	38%	37%	15%	85%
Rowan-Cabarrus CC	4,854	3,868	11%	47%	22%	21%	79%
Sampson CC	1,722	1,085	11%	47%	18%	24%	76%
Sandhills CC	3,808	1,763	6%	47%	23%	24%	76%
Southeastern CC	1,910	1,462	12%	43%	21%	24%	76%
South Piedmont CC	2,429	2,467	14%	46%	22%	17%	83%
Southwestern CC	2,130	1,508	9%	41%	26%	24%	76%
Stanly CC	2,230	1,441	10%	47%	21%	22%	78%
Surry CC	3,263	1,902	8%	50%	19%	24%	76%
Tri-County CC	1,255	536	11%	49%	23%	17%	83%
Vance-Granville CC	4,440	2,856	15%	39%	21%	25%	75%
Wake TCC	10,047	7,367	8%	51%	18%	23%	77%
Wayne CC	3,503	3,101	14%	38%	24%	24%	76%
Western Piedmont CC	2,994	2,893	10%	51%	14%	25%	75%
Wilkes CC	3,083	1,865	4%	58%	17%	22%	78%
Wilson TCC	2,186	1,857	6%	49%	21%	25%	75%
System Totals	192,693	140,926	9%	49%	22%	20%	80%

# WAKE TECHNICAL COMMUNITY COLLEGE

EXTENSION FTE (INCLUDES BASIC SKILLS, LEARNING LAB,  
OCCUPATIONAL EXTENSION, FOCUSED INDUSTRY TRAINING,  
HUMAN RESOURCES DEVELOPMENT, NEW & EXPANDING  
INDUSTRY, SMALL BUSINESS CENTER, JOB TRAINING  
PARTNER, & COMMUNITY SERVICE)

YEAR	FALL	SPRING	SUMMER
1998-1999	815	870	592
1999-2000	864	763.7	608.6
2000-2001	816	815.1	513
2001-2002	861.2	862	563
2002-2003	921	897	561
2003-2004	935	930	599

HRD is not Self-Support

JANUARY 2005

SOURCE: WAKE TECHNICAL COMMUNITY COLLEGE REGISTRAR

**WAKE TECHNICAL COMMUNITY COLLEGE**  
**BASIC SKILLS FTE (INCLUDES ADULT HIGH SCHOOL, ABE,**  
**COMPENSATORY EDUCATION)**  
**LAST 5 YEARS**

---

<b>YEAR</b>	<b>FALL</b>	<b>SPRING</b>	<b>SUMMER</b>
1999-2000	274	282	200
2000-2001	297	343.2	212
2001-2002	369.7	381.6	241
2002-2003	357	342.1	226.1
2003-2004	394	367.3	237.8

JANUARY 2005  
SOURCE: WAKE TECHNICAL COMMUNITY COLLEGE REGISTRAR

**WAKE TECHNICAL COMMUNITY COLLEGE**  
**SELF-SUPPORTING FTE (INCLUDES: OCCUPATIONAL**  
**EXTENSION RECEIPT, FOCUSED INDUSTRY TRAINING, SMALL**  
**BUSINESS CENTER, JOB TRAINING PARTNERSHIP, LEARNING**  
**LAB, COMMUNITY SERVICE SELF-SUPPORTING)**  
**LAST 5 YEARS**

<b>YEAR</b>	<b>FALL</b>	<b>SPRING</b>	<b>SUMMER</b>
1999-2000	40	37.8	24.4
2000-2001	31	40.4	19.2
2001-2002	38.3	36.6	27
2002-2003	51	50.3	23.8
2003-2004	44	57.2	30.6

**NEW AND EXPANDING INDUSTRY FTE**  
**LAST 5 YEARS**

<b>YEAR</b>	<b>FALL</b>	<b>SPRING</b>	<b>SUMMER</b>
1999-2000	75.7	49.5	50.1
2000-2001	91	48.6	24.2
2001-2002	25.5	6.5	3
2002-2003	14	6.6	3.7
2003-2004	8	4.6	3.3

JANUARY 2005  
 SOURCE: WAKE TECHNICAL COMMUNITY COLLEGE REGISTAR

# WAKE TECHNICAL COMMUNITY COLLEGE

## CONTINUING EDUCATION SERVICES

### CORRECTIONS EDUCATION

Year	1999	2000	2001	2002	2003	2004
<b>Classes</b>	329	346	357	372	407	415
<b>Students</b>	4,086	3,942	4,344	4,036	4,497	4,263

### EVENING DIVISION (Non-Credit)

Year	1999	2000	2001	2002	2003	2004
<b>Classes</b>	4,751	1,033	992	1,255	1,511	1,435
<b>Students</b>	18,931	14,683	13,813	14,633	14,442	13,969

### FIRE SERVICES TRAINING

Year	1999	2000	2001	2002	2003	2004
<b>Classes</b>	475	504	540	551	565	760
<b>Students</b>	7,412	7,296	8,119	8,421	7,924	10,272

### LAW ENFORCEMENT TRAINING

Year	1999	2000	2001	2002	2003	2004
<b>Classes</b>	339	340	346	386	492	605
<b>Students</b>	5,109	4,579	4,681	6,372	9,081	12,486

### WORKPLACE BASIC SKILLS (ABE/GED, WORKPLACE SPECIFIC, AND ESL)

Year	1998-1999	2000	2001	2002	2003	2004
<b>Classes</b>	28	18	16	23	11	9
<b>Employers</b>	23	16	15	21	9	7
<b>Students</b>	760	477	387	483	247	172

SOURCE: WAKE TECHNICAL COMMUNITY COLLEGE CONTINUING EDUCATION, JANUARY 2005



# **EMPLOYEES**

# WAKE TECHNICAL COMMUNITY COLLEGE

## FULL-TIME EMPLOYEES STATISTIC USING EEOC CLASSIFICATION

### DATA EFFECTIVE NOVEMBER 2004

---

<b>FULL-TIME ANNUAL</b>	<b>MALES</b>	<b>%</b>	<b>FEMALES</b>	<b>%</b>	<b>TOTAL</b>
EXECUTIVE/MANAGERIAL	14	63.7	8	36.4	22
INSTRUCTIONAL/FACULTY	141	40.63	206	59.37	347
PROFESSIONAL (NON-FACULTY)	47	36.43	82	63.5	129
SECRETARIAL/CLERICAL	4	4.40	87	95.60	91
TECHNICAL/PARPROFESSIONAL	5	17.2	24	82.8	29
SKILLED CRAFTS	9	100	0	0	9
SERVICE/MAINTENANCE	2	100	0	0	2
<b>TOTAL</b>	<b>222</b>	<b>35.30</b>	<b>407</b>	<b>64.70</b>	<b>629</b>

OFFICE OF RESEARCH  
JANUARY 2005

SOURCE: WAKE TECHNICAL COMMUNITY COLLEGE ADMINISTRATIVE SERVICES (IPEDS)

**WAKE TECHNICAL COMMUNITY COLLEGE**  
**PART-TIME EMPLOYEES USING EEOC CLASSIFICATION BY**  
**SEX**  
**DATA EFFECTIVE NOVEMBER 2004**

---

<b>EEOC CLASSIFICATION</b>	<b>MALES</b>	<b>FEMALES</b>	<b>TOTAL</b>
EXECUTIVE/MANAGERIAL	0	0	0
INSTRUCTIONAL/FACULTY	323	418	741
PROFESSIONAL (NON-FACULTY)	14	29	43
SECRETARIAL/CLERICAL	3	20	23
TECHNICAL/PARPROFESSIONAL	8	16	24
SKILLED CRAFTS	0	0	0
SERVICE/MAINTENANCE	0	0	0
<b>TOTAL</b>	<b>348</b>	<b>483</b>	<b>831</b>

OFFICE OF RESEARCH  
JANUARY 2005  
SOURCE: WAKE TECHNICAL COMMUNITY COLLEGE ADMINISTRATIVE SERVICES (IPEDS)

# WAKE TECHNICAL COMUNITY COLLEGE

## STAFF INFORMATION REPORT

**DATE EFFECTIVE: NOVEMBER 2004**

<b>CATEGORY</b>	<b>FULL-TIME</b>	<b>PART-TIME</b>
Exec/Admin/Managerial	22	0
Instructional	347	741
Professional	129	43
Clerical	91	23
Tech/Paraprofessional	29	24
Skilled Crafts	9	0
Service Maintenance	2	0
<b>Totals</b>	<b>629</b>	<b>831</b>

OFFICE OF RESEARCH  
JANUARY 2005

SOURCE: WAKE TECHNICAL COMMUNITY COLLEGE ADMINISTRATIVES SERVICES (IPEDS)

# **FACILITIES**

## WAKE TECHNICAL COMMUNITY COLLEGE PERMANENT FACILITIES

---

ACADEMIC YEAR	GROSS SQUARE FEET	LEASED
1994	404,110	22,260
1995	404,110	22,260
1996	404,110	22,260
1997	509,779	22,260
1998	509,779	22,260
1999	509,779	22,260
2000	509,779	22,260
2001	509,779	22,260
2002	492,979	37,223
2003	733,078	37,223
2004	736,397	45,513

(Ownership of Buildings: Table 18)

SOURCE: FACILITIES INVENTORY AND UTILIZATION STUDY, STATE OF NORTH CAROLINA, THE UNIVERSITY OF NORTH CAROLINA, THE UNIVERSITY OF NORTH CAROLINA COMMISSION ON HIGHER EDUCATION FACILITIES CHAPEL HILL, NORTH CAROLINA, OCTOBER 2004

## **Facilities Inventory and Utilization Study 2003**

The primary purpose of this research document is to provide higher education administrators with a detailed statistical profile of the facilities of their own campuses and of other colleges and universities in North Carolina (Facilities Inventory and Utilization Study, 2004).

### **Capacity/Enrollment Ratio**

The capacity/enrollment ratio, often referred to as the C/E ratio, is the amount of instructional and library space on campus divided by the total fall term student clock hours of that institution. In analyzing and comparing the capacity/enrollment ratios, it should be kept in mind that a relatively low ratio generally indicates a high level of space utilization.

#### **Capacity/Enrollment Ratio (Table 1)**

	<b>2003</b>	<b>2002</b>	<b>2001</b>	<b>2000</b>	<b>1999</b>	<b>1998</b>
<b>Wake Tech CC</b>	2.85*	2.28	2.28	2.21	2.28	2.79
<b>Central Piedmont CC</b>	3.39	3.59	3.34	3.78	3.80	3.29
<b>Fayetteville CC</b>	2.95	3.11	3.24	3.49	3.14	3.04
<b>Guilford CC</b>	3.33	3.78	3.95	4.88	4.40	4.75
<b>System Average</b>	3.61	3.66	3.77	4.04	3.97	4.06

\* Sixth lowest figure among the 58 NC Community Colleges in 2003: 2.85

Facilities Inventory and Utilization Study 2003  
State of North Carolina Higher Education Comprehensive Planning Program  
The University of North Carolina Commission on Higher Education Facilities Chapel Hill,  
North Carolina, October 2004

### **Square Feet of Academic Facilities Per FTE Student**

The ratio of an institution's square footage of academic facilities to its full-time equivalent enrollment represents an important index of the instructional utilization of campus facilities. In this table, the FTE enrollments which are reported for the institutions of the Community College System include only credit enrollment generated in all inventoried space (on-campus only = Main Campus, Adult Education Center, and the Health Education Campus)

**Square Feet of Academic Facilities Per FTE Student (Table 2)**

	<b>2003</b>	<b>2002</b>	<b>2001</b>	<b>2000</b>	<b>1999</b>	<b>1998</b>
<b>Wake Tech CC</b>	61*	52	52	54	58	59
<b>Central Piedmont CC</b>	79	82	110	109	102	89
<b>Fayetteville CC</b>	81	88	89	91	85	85
<b>Guilford CC</b>	86	92	90	95	103	103
<b>System Average</b>	84	86	91	98	97	98

\* Wake Tech CC had the fourth lowest figures for 2003: 61

Facilities Inventory and Utilization Study 2003

State of North Carolina Higher Education Comprehensive Planning Program

The University of North Carolina Commission on Higher Education Facilities Chapel Hill,  
North Carolina, October 2004



### **Average Weekly Room Hours of Instruction in Classroom**

Is the average number of hours that an institution's classrooms are used for instructional purposes each week.

For the purpose of this study, a classroom is defined as a room used to conduct classes that do not require special-purpose equipment for student use.

Daytime utilization is based on all classes with beginning times between and including 5:00 a.m. and 4:59 p.m.; nighttime utilization is based on all other classes. The "All Hours" section in Table 3 indicates the sum of the daytime and nighttime figures for the last five years.

**Average Weekly Room Hours of Instruction in Classrooms (Table 3)**

	<b>Daytime Hours</b>	<b>Nighttime Hours</b>	<b>All Hours</b>				
			<b>2003</b>	<b>2002</b>	<b>2001</b>	<b>2000</b>	<b>1999</b>
<b>Wake Tech CC</b>	22.6	4.4	31.9*	27.0	28.8	29.2	30.0
<b>Central Piedmont CC</b>	15.6	6.1	21.7	21.8	22.8	21.2	20.9
<b>Fayetteville CC</b>	15.0	5.5	20.5	21.4	23.3	22.3	23.2
<b>Guilford CC</b>	16.7	5.0	21.7	20.5	18.5	13.9	17.6
<b>System Average</b>	15.3	5.5	20.8	20.6	20.9	20.4	20.6

\*Wake Tech CC had the sixth highest figure for 2003: 27.0 (ALL HOURS)

Facilities Inventory and Utilization Study 2003  
State of North Carolina Higher Education Comprehensive Planning Program  
The University of North Carolina Commission on Higher Education Facilities Chapel Hill,  
North Carolina, October 2004

### **Average Weekly Room Hours of Instruction in Class Laboratories**

Is the average number of hours that an institution's class laboratories are used for instructional purposes each week.

For purposes of this study, a class laboratory is defined as a room used primarily for regularly scheduled classes that require special-purpose equipment for student participation, experimentation, observation or practice in a field of study.

Daytime utilization is based on all classes with beginning times between and including 5:00 a.m. and 4:59 p.m.; nighttime utilization is based on all other classes. The "All Hours" section in Table 4 indicates the sum of the daytime and nighttime figures for the last five years.

**Average Weekly Room Hours of Instruction in Class Laboratories (Table 4)**

	<b>Daytime Hours</b>	<b>Nighttime Hours</b>	<b>All Hours</b>				
			<b>2003</b>	<b>2002</b>	<b>2001</b>	<b>2000</b>	<b>1999</b>
<b>Wake Tech CC</b>	17.9	5.9	23.8*	25.8	28.5	30.0	27.3
<b>Central Piedmont CC</b>	12.8	5.9	18.7	21.2	17.7	18.4	18.0
<b>Fayetteville CC</b>	14.5	4.0	18.5	17.3	18.1	16.9	17.7
<b>Guilford CC</b>	11.4	3.7	15.1	15.2	15.1	13.9	14.4
<b>System Average</b>	13.5	4.6	18.1	18.0	18.1	18.0	17.8

\*Wake Tech CC had the fourth highest figure for 2003: 23.8 (ALL HOURS)

Facilities Inventory and Utilization Study 2003  
State of North Carolina Higher Education Comprehensive Planning Program  
The University of North Carolina Commission on Higher Education Facilities Chapel Hill,  
North Carolina, October 2004

### Average Weekly Use of Student Stations in Classrooms

The average number of hours each week that each classroom student station (seat) is used.

**Average Weekly Use of Student Stations in Classrooms (Table 5)**

	<b>Daytime Hours</b>	<b>Nighttime Hours</b>	<b>All Hours</b>				
			<b>2003</b>	<b>2002</b>	<b>2001</b>	<b>2000</b>	<b>1999</b>
<b>Wake Tech CC</b>	13.9	2.7	16.6*	21.3	18.0	18.4	18.8
<b>Central Piedmont CC</b>	10.0	3.8	13.8	12.6	13.1	10.8	10.5
<b>Fayetteville CC</b>	7.7	2.1	9.8	11.6	11.3	11.1	12.4
<b>Guilford CC</b>	11.9	3.6	15.5	13.6	13.1	9.6	11.6
<b>System Average</b>	9.5	3.0	12.5	12.6	12.1	11.2	11.5

\*Wake Tech CC had the seventh highest figure for 2003: 16.6

Facilities Inventory and Utilization Study 2003

State of North Carolina Higher Education Comprehensive Planning Program

The University of North Carolina Commission on Higher Education Facilities Chapel Hill,  
North Carolina, October 2004

### Average Weekly Use of Student Stations in Class Laboratories

The average number of hours each week that each class lab student station is used.

**Average Weekly Use of Student Stations in Class Laboratories (Table 6)**

	<b>Daytime Hours</b>	<b>Nighttime Hours</b>	<b>All Hours</b>					
			<b>2003</b>	<b>2002</b>	<b>2001</b>	<b>2000</b>	<b>1999</b>	<b>1998</b>
<b>Wake Tech CC</b>	12.0	3.7	15.7*	18.4	21.3	22.9	21.5	23.3
<b>Central Piedmont CC</b>	7.6	3.4	11.0	10.7	9.3	8.5	9.3	11.2
<b>Fayetteville CC</b>	8.8	2.0	10.8	10.1	10.4	8.9	9.7	9.8
<b>Guilford CC</b>	8.7	2.4	11.1	10.3	11.1	10.7	10.1	9.3
<b>System Average</b>	9.0	2.6	11.6	11.6	11.2	10.6	10.6	10.7

\* Wake Tech CC had the sixth highest figure for 2003: 15.7

Facilities Inventory and Utilization Study 2002

State of North Carolina Higher Education Comprehensive Planning Program

The University of North Carolina Commission on Higher Education Facilities Chapel Hill,  
North Carolina, October 2004

### Percent Student Station Utilization Classrooms and Class Laboratories

Percent student station utilization indicates the average percentage of student stations (seats) that are occupied when classrooms or class laboratories are in use.

#### Percent Student Station Utilization Classrooms and Class Laboratories (Table 7)

##### Classrooms

<b>CLASSROOMS</b>	<b>2003</b>	<b>2002</b>	<b>2001</b>	<b>2000</b>	<b>1999</b>
<b>Wake Tech CC</b>	63.8*	67.1	63.9	63.6	64.2
<b>Central Piedmont CC</b>	62.9	56.9	54.9	47.5	48.1
<b>Fayetteville CC</b>	43.8	48.7	45.1	46.1	49.9
<b>Guilford CC</b>	66.2	62.0	66.6	61.1	62.6
<b>System Average</b>	56.8	57.1	55.2	52.0	53.1

\* Wake Tech CC has the seventh highest classroom figure for 2003: 63.8

##### Class Laboratories

<b>LABORATORIES</b>	<b>2003</b>	<b>2002</b>	<b>2001</b>	<b>2000</b>	<b>1999</b>
<b>Wake Tech CC</b>	61.9*	66.1	68.7	70.1	72.2
<b>Central Piedmont CC</b>	56.0	49.1	48.9	43.9	49.7
<b>Fayetteville CC</b>	54.3	55.7	54.2	50.5	53.4
<b>Guilford CC</b>	64.6	60.5	62.4	65.8	61.7
<b>System Average</b>	58.8	58.5	56.3	53.9	54.8

\* Wake Tech CC has the nineteenth highest figure for Class Laboratories for 2003: 61.9

Facilities Inventory and Utilization Study 2003

State of North Carolina Higher Education Comprehensive Planning Program

The University of North Carolina Commission on Higher Education Facilities Chapel Hill,  
North Carolina, October 2004

## Enrollments

This table for 1999-2002 lists only fall on-campus (inventoried space) credit enrollment. Noncredit enrollments are not included. Instruction which took place in facilities not on a community college's facilities inventory was not considered in determining the FTE enrollment listed. For 2003, the fall on-campus credit FTE is provided, but as a means of comparison, the total fall credit FTE (representing both on-campus and off-campus credit instruction) is listed for all colleges in parentheses.

**FTE Enrollments (Table 12)**

	<b>2003</b>	<b>2002</b>	<b>2001</b>	<b>2000</b>	<b>1999</b>
<b>Wake Tech CC</b>	6,782 (7,770)	6,536 (7,500)	6,322 (7,158)	5,846 (6,556)	5,338 (7,788)
<b>Central Piedmont CC</b>	9,102 (10,266)	9,016 (10,078)	6,378 (9,556)	6,188 (8,850)	6,426 (10,666)
<b>Fayetteville CC</b>	5,454 (7,412)	5,102 (6,696)	4,990 (6,296)	4,652 (5,748)	4,832 (8,088)
<b>Guilford CC</b>	6,164 (6,700)	5,816 (6,364)	5,988 (6,304)	5,568 (5,842)	5,160 (6,566)

\* Figures in parentheses represent total FTE enrollments (both on and off campus).

Facilities Inventory and Utilization Study 2003  
 State of North Carolina Higher Education Comprehensive Planning Program  
 The University of North Carolina Commission on Higher Education Facilities Chapel Hill,  
 North Carolina, October 2004

# COMPARISONS

**North Carolina Community College System**  
**Curriculum/Continuing Education Information System**  
**Curriculum and Continuing Education Student Enrollment by College**

**Table 1 Annual**

**Reporting Year: 2003 - 2004**

**Last Refresh on : 6/13/2005**

College Name	Curriculum					Continuing Education											Total
	Assoc	Dipl	Cert	Trans	Curr Sub	Basic Skills	Learn Lab	Occ RB	Occ Ext SS	FIT	HRD	NIT/EIT	SBC	Comm Svc	Non Occ SS	CE Sub	
Alamance CC	3,902	430	473	1,541	6,222	3,151		4,087	784	99	362	56	297	861	533	9,784	15,589
Asheville-Buncombe TCC	4,289	445	346	3,947	8,797	3,865		8,662	1,035	69	1,088	202	564	1,373	1,620	17,238	25,089
Beaufort County CC	1,488	136	60	517	2,179	1,026		2,956	158	6	219	60	144	188	877	5,403	7,334
Bladen CC	1,576	144	61	193	1,951	695		1,360		20	871	21	85	106	584	3,451	5,096
Blue Ridge CC	1,745	256	279	716	2,891	1,396	15	5,163	403	204	1,917	279	341	608	3,979	12,985	15,386
Brunswick CC	902	201	163	202	1,430	896		2,275	215	2	610	123	134	500	1,044	5,532	6,822
Caldwell CC and TI	2,542	1,094	393	1,147	5,029	2,278	33	3,842	471	59	518	23	857	137	1,423	9,212	13,637
Cape Fear CC	6,744	556	728	1,546	9,335	3,116	1,678	7,308	455	109	1,434	734	197	487	4,737	19,304	26,266
Carteret CC	1,703	156	134	530	2,474	882		2,409	812		367		860	224	203	5,462	7,585
Catawba Valley CC	4,520	438	359	1,606	6,787	3,134		3,742	1,647	97	590	82	533	713	1,307	11,297	17,487
Central Carolina CC	3,257	422	797	1,164	5,576	4,738		6,664	426	120	377	603		673	387	13,463	18,436
Central Piedmont CC	12,945	554	542	10,245	23,809	11,697		9,159	11,120	236	590	522			3,161	34,825	56,520
Cleveland CC	2,184	505	239	1,285	4,091	740		2,922	17	58	885	674	97	232	806	6,267	9,913
Coastal Carolina CC	4,798	317	236	858	6,102	5,012		8,113	1,336	40	484	22	519	581	2,855	17,722	22,795
College of the Albemarle	2,022	126	149	1,118	3,357	2,854		2,992	40		510		859		673	7,659	10,516
Craven CC	3,426	188	76	1,026	4,650	1,779		4,292	447		624	804	329	509	792	9,069	13,236
Davidson County CC	2,697	540	432	702	4,268	3,157		6,420	965	316	1,928	41	306	29	534	12,713	16,225
Durham TCC	4,842	265	229	3,312	8,344	4,455		7,455	106	49	1,991	761			736	15,064	22,794
Edgecombe CC	2,297	300	47	1,035	3,628	2,047		1,944	31	7	1,560		400	90	25	5,286	8,701
Fayetteville TCC	8,940	673	185	5,358	14,605	6,496		11,329	3,516	94	1,337		586	1,939	351	23,771	36,920
Forsyth TCC	7,189	519	578	1,807	9,935	5,186		8,881	2,899	199	333	100	806	651	1,969	19,989	28,768
Gaston College	5,235	401	331	1,397	7,272	2,599		4,520	1,975	72	4,006	340	216	134	1,917	14,842	21,282
Guilford TCC	10,039	393	46	2,003	12,309	5,912		8,087	1,365	79	2,072	81	487	895	6,924	24,595	35,873
Halifax CC	1,654	264	236	272	2,349	1,127	38	2,293	609	55	44	138	817	188	65	5,110	7,173
Haywood CC	1,533	103	233	854	2,680	995	820	2,141			426		314	178	439	4,907	6,662
Isothermal CC	2,049	335	155	639	3,020	1,739		2,271		74	464	923	405	64	5,040	10,064	12,355
James Sprunt CC	957	388	177	473	1,921	845	103	2,234	6	110	84		387	150	2,055	5,797	7,425
Johnston CC	2,603	266	954	2,108	5,853	1,868		3,999	976	286	245	623	744	237	905	9,285	14,622
Lenoir CC	2,324	119	200	1,013	3,557	2,388		4,159		45	962	580	603	218	1,875	10,055	13,105
Martin CC	821	85	60	302	1,246	815		1,426	86	12	400	30	204	324	21	3,021	4,152
Mayland CC	705	257	398	683	1,958	1,304		1,752	306	7	403		290	57	782	4,490	6,029
McDowell TCC	1,010	221	205	337	1,710	934		2,998	1,011	136	513	317	62	162	637	6,474	7,901
Mitchell CC	1,979	536	154	590	3,151	2,273		3,146	728	120	1,752	311	212	73	1,151	9,155	11,851



**North Carolina Community College System**  
**Curriculum/Continuing Education Information System**  
**Curriculum and Continuing Education Student Enrollment by College**

**Table 1 Annual**

**Reporting Year: 2003 - 2004**

**Last Refresh on : 6/13/2005**

College Name	Curriculum					Continuing Education											Total
	Assoc	Dipl	Cert	Trans	Curr Sub	Basic Skills	Learn Lab	Occ RB	Occ Ext SS	FIT	HRD	NIT/EIT	SBC	Comm Svc	Non Occ SS	CE Sub	
Montgomery CC	726	111	126	301	1,234	547	2	1,171	333	15	123	24	138	57	26	2,276	3,341
Nash CC	2,485	109	296	1,020	3,844	1,780	27	3,891	920	94	491		496	295	419	7,746	11,189
Pamlico CC	277	57	116	127	565	338		561			108		130	127		1,156	1,639
Piedmont CC	1,475	258	682	1,085	3,426	1,905		2,009	651	55	741	53	257	161		5,345	8,371
Pitt CC	6,042	313	307	1,465	7,997	2,778		2,828	2,303	157	1,323	65	74	49	78	9,109	16,407
Randolph CC	1,734	667	147	809	3,289	2,181		3,750	862	550	679		176	291	998	8,675	11,528
Richmond CC	1,861	65	118	275	2,280	1,965		1,915	20	73	406	97	227			4,349	6,440
Roanoke-Chowan CC	983	94	110	176	1,353	727		911	2		45		298	217	78	2,237	3,483
Robeson CC	2,267	162	275	449	3,099	2,954		4,562	847	298	2,008	139	441	443	67	10,910	13,601
Rockingham CC	1,598	213	635	570	2,916	1,633		3,176	413	340	509	166	606	250	2,036	8,324	10,744
Rowan-Cabarrus CC	4,492	1,646	522	1,211	7,581	3,874		5,720	1,792	163	963	103	378	110	443	12,017	18,826
Sampson CC	1,418	166	121	391	2,062	1,291		2,008	144	20	1,563	112	358	222	785	5,737	7,367
Sandhills CC	3,604	119	170	997	4,785	1,741		4,508	985	48	230	106	597	185	482	8,339	12,583
Southeastern CC	1,776	224	281	726	2,912	1,434		3,586	32	20	1,077	44	992	1,084	12	7,456	9,700
South Piedmont CC	1,378	185	257	805	2,537	2,520		2,205	664	96	1,352		344	56	506	7,216	9,385
Southwestern CC	1,817	89	167	629	2,672	1,527		2,895	504	10	726	72	185		431	5,436	7,930
Stanly CC	1,623	123	287	777	2,750	1,680		3,905	687	22	354	28	189	87	55	6,534	8,816
Surry CC	2,509	824	248	1,303	4,696	1,840		4,171	99	797	913	42	420	356	1,036	8,886	12,922
Tri-county CC	1,132	91	83	354	1,642	538		1,473	695	21	116	163	847	439	131	3,990	5,300
Vance-Granville CC	3,704	467	357	1,377	5,798	2,597		5,885	109	712	1,053	1,136	300	454	162	11,528	16,584
Wake TCC	12,669	664	1,367	2,003	16,407	7,698	3,493	16,044	1,651	612	2,072	607	1,044	4,717	283	35,974	48,424
Wayne CC	3,285	210	163	746	4,317	3,123	389	3,746	21	107	1,302	6	874	138	739	9,395	13,216
Western Piedmont CC	2,848	146	182	834	3,927	2,955	228	4,121	2,086	174	866	73	198	326	1,041	10,640	14,098
Wilkes CC	2,594	158	110	852	3,656	1,756		5,677	587	842	1,066	293	282	353	79	9,907	12,880
Wilson Technical CC	2,059	207	183	751	3,103	1,858		4,795	477	92	308	112	156	531	24	7,992	10,706
<b>System Total</b>	<b>178,738</b>	<b>18,941</b>	<b>16,911</b>	<b>69,380</b>	<b>273,626</b>	<b>142,210</b>	<b>6,824</b>	<b>221,739</b>	<b>50,306</b>	<b>8,085</b>	<b>50,012</b>	<b>11,865</b>	<b>22,512</b>	<b>23,473</b>	<b>60,115</b>	<b>549,128</b>	<b>779,132</b>

\*\*\*\*Unduplicated headcounts are reported in each cell. Rows and columns will not add up.\*\*\*\*

**North Carolina Community College System**  
**Curriculum Student Information II**  
**Student Enrollment by Race and Gender by College**  
**(Unduplicated Headcount)**

**ANNTBL8 - II**

**Reporting Year: 2003-2004**

Last Refresh on : 6/13/2005

	Am Ind Fem	Am Ind Male	Asian Fem	Asian Male	Black Fem	Black Male	Hisp Fem	Hisp Male	Other Fem	Other Male	White Fem	White Male	Grand Total
<b>Alamance CC</b>	21	10	45	39	1,035	336	93	52	158	120	2,723	1,593	<b>6,225</b>
<b>Asheville-Buncombe TCC</b>	24	18	37	38	349	198	72	60	154	159	4,391	3,297	<b>8,797</b>
<b>Beaufort County CC</b>	1	2	5	3	616	186	8	11	7	5	812	524	<b>2,180</b>
<b>Bladen CC</b>	197	21	5	3	725	182	8	12	19	5	531	243	<b>1,951</b>
<b>Blue Ridge CC</b>	8	6	13	11	107	44	40	27	16	9	1,557	1,054	<b>2,892</b>
<b>Brunswick CC</b>	8	1	2		264	68	6	6	14	3	746	312	<b>1,430</b>
<b>Caldwell CC and TI</b>	3	8	25	20	149	124	29	35	34	53	2,481	2,069	<b>5,030</b>
<b>Cape Fear CC</b>	41	38	46	33	955	511	94	68	135	140	3,873	3,403	<b>9,337</b>
<b>Carteret CC</b>	10	4	19	5	231	60	29	10	54	28	1,323	703	<b>2,476</b>
<b>Catawba Valley CC</b>	11	7	197	165	389	244	104	68	27	17	3,416	2,142	<b>6,787</b>
<b>Central Carolina CC</b>	39	22	41	23	1,167	549	157	109	60	30	2,647	1,733	<b>6,577</b>
<b>Central Piedmont CC</b>	65	36	548	500	5,032	2,293	600	432	321	233	7,441	6,310	<b>23,811</b>
<b>Cleveland CC</b>	6	8	14	7	728	338	18	14	19	10	1,778	1,152	<b>4,092</b>
<b>Coastal Carolina CC</b>	45	22	112	63	908	447	301	184	11	3	2,598	1,410	<b>6,104</b>
<b>College of the Albemarle</b>	11	7	13	5	611	239	25	29	29	25	1,530	833	<b>3,357</b>
<b>Craven CC</b>	20	13	49	32	748	316	108	105	54	38	1,846	1,321	<b>4,650</b>
<b>Davidson County CC</b>	17	9	41	28	499	198	30	25	20	15	2,205	1,183	<b>4,270</b>
<b>Durham TCC</b>	17	9	270	190	2,713	1,066	162	116	101	78	2,069	1,557	<b>8,348</b>

**North Carolina Community College System**  
**Curriculum Student Information II**  
**Student Enrollment by Race and Gender by College**  
**(Unduplicated Headcount)**

**ANNTBL8 - II**

**Reporting Year: 2003-2004**

Last Refresh on : 6/13/2005

	Am Ind Fem	Am Ind Male	Asian Fem	Asian Male	Black Fem	Black Male	Hisp Fem	Hisp Male	Other Fem	Other Male	White Fem	White Male	Grand Total
Edgecombe CC	25	1	4	5	1,676	496	20	24	15	14	945	405	3,630
Fayetteville TCC	265	101	198	112	4,006	1,797	694	414	353	210	4,006	2,454	14,610
Forsyth TCC	38	29	81	42	1,873	715	149	90	109	76	4,164	2,580	9,946
Gaston College	19	8	48	30	998	292	89	52	53	38	3,764	1,882	7,273
Guilford TCC	31	31	199	152	2,765	1,481	150	116	151	103	3,648	3,493	12,320
Halifax CC	33	10	4	3	955	358	6	4	6	20	635	319	2,353
Haywood CC	20	6	13	5	22	8	13	15	4	3	1,476	1,096	2,681
Isothermal CC	9	3	8	2	341	117	17	16	17	18	1,531	941	3,020
James Sprunt CC	5	5	4		627	237	26	16	11	3	672	316	1,922
Johnston CC	25	14	21	17	740	593	114	79	46	32	2,582	1,592	5,855
Lenoir CC	6	3	7	3	1,084	379	30	10	34	19	1,269	715	3,559
Martin CC	2				535	172	4	5	7	3	357	161	1,246
Mayland CC	5	12	4	2	5	75	7	8	3	6	950	882	1,959
McDowell TCC	4	5	5	14	58	71	9	3	7	2	951	581	1,710
Mitchell CC	5	2	39	21	490	125	42	42	22	8	1,559	796	3,151
Montgomery CC	5	5	15	4	201	108	16	15	6	2	493	364	1,234
Nash CC	45	26	18	4	1,010	349	22	19	74	56	1,234	987	3,844
Pamlico CC	3	5	4		98	88	1	5	2	4	226	129	565
Piedmont CC	9	10	7	9	786	645	14	12	15	42	1,011	867	3,427

**North Carolina Community College System**  
**Curriculum Student Information II**  
**Student Enrollment by Race and Gender by College**  
**(Unduplicated Headcount)**

**ANNTBL8 - II**

**Reporting Year: 2003-2004**

Last Refresh on : 6/13/2005

	Am Ind Fem	Am Ind Male	Asian Fem	Asian Male	Black Fem	Black Male	Hisp Fem	Hisp Male	Other Fem	Other Male	White Fem	White Male	Grand Total
<b>Pitt CC</b>	20	21	44	32	1,920	769	64	60	143	89	2,624	2,215	<b>8,001</b>
<b>Randolph CC</b>	10	14	22	12	228	65	45	41	17	14	1,905	916	<b>3,289</b>
<b>Richmond CC</b>	153	42	9	11	605	191	10	4	3	3	832	417	<b>2,280</b>
<b>Roanoke Chowan CC</b>	5	5	3	2	696	222	4	2		1	286	127	<b>1,353</b>
<b>Robeson CC</b>	1,030	288	4	6	713	256	12	11	5	3	530	242	<b>3,100</b>
<b>Rockingham CC</b>	8	4	11	9	489	156	14	9	26	14	1,389	787	<b>2,916</b>
<b>Rowan-Cabarrus CC</b>	20	13	61	46	1,235	375	72	54	15	10	3,625	2,055	<b>7,581</b>
<b>Sampson CC</b>	38	15	3	2	595	177	60	25	6		772	370	<b>2,063</b>
<b>Sandhills CC</b>	216	49	18	13	992	314	47	30	105	55	1,795	1,152	<b>4,786</b>
<b>Southeastern CC</b>	123	38	5	4	589	276	6	21	21	19	1,176	634	<b>2,912</b>
<b>South Piedmont CC</b>	15	7	8	8	670	175	14	15	20	11	1,053	541	<b>2,537</b>
<b>Southwestern CC</b>	191	94	6	8	24	21	24	7	26	18	1,454	799	<b>2,672</b>
<b>Stanly CC</b>	6	3	38	31	239	131	7	8	12	20	1,434	822	<b>2,751</b>
<b>Surry CC</b>	4	2	9	14	115	70	56	33	11	11	2,813	1,559	<b>4,697</b>
<b>Tri-county CC</b>	20	3	2	4	11	5	10	5	5	5	1,051	522	<b>1,643</b>
<b>Vance-Granville CC</b>	38	17	14	13	1,944	881	37	52	102	82	1,673	953	<b>5,806</b>
<b>Wake TCC</b>	54	45	485	403	2,788	1,505	343	283	220	195	5,199	4,894	<b>16,414</b>
<b>Wayne CC</b>	33	15	46	35	1,005	378	63	44	61	37	1,551	1,052	<b>4,320</b>
<b>Western Piedmont CC</b>	4	8	87	88	194	153	17	17	46	61	2,081	1,171	<b>3,927</b>

**North Carolina Community College System**  
**Curriculum Student Information II**  
**Student Enrollment by Race and Gender by College**  
 (Unduplicated Headcount)

**ANNTBL8 - II**

**Reporting Year: 2003-2004**

Last Refresh on : 6/13/2005

	Am Ind Fem	Am Ind Male	Asian Fem	Asian Male	Black Fem	Black Male	Hisp Fem	Hisp Male	Other Fem	Other Male	White Fem	White Male	Grand Total
<b>Wilkes CC</b>	4	8	14	10	107	54	20	22	9	7	2,162	1,239	<b>3,656</b>
<b>Wilson Technical CC</b>	7	1	5	5	1,185	315	45	26	17	10	889	601	<b>3,106</b>
Total:	<b>3,097</b>	<b>1,209</b>	<b>3,055</b>	<b>2,346</b>	<b>51,840</b>	<b>21,994</b>	<b>4,277</b>	<b>3,077</b>	<b>3,038</b>	<b>2,295</b>	<b>111,734</b>	<b>74,467</b>	<b>282,429</b>

# North Carolina Community College System

## Course FTE Information System

### Curriculum Two Semester Annualized FTE

#### ANNTBL29

Fall 2003 - Spring 2004

Last Refresh on: 6/14/2005

Colleges	Fall	Spring	2003-2004 Annual FTE	2002-2003 Annual FTE	2001-2002 Annual FTE
Alamance CC	1,573	1,480	3,053	2,697	2,564
Asheville-Buncombe TCC	2,155	2,111	4,266	4,046	3,845
Beaufort County CC	659	674	1,333	1,359	1,290
Bladen CC	587	607	1,193	1,071	931
Blue Ridge CC	855	798	1,653	1,547	1,389
Brunswick CC	444	426	870	813	754
Caldwell CC & TI	1,464	1,440	2,904	2,815	2,793
Cape Fear CC	2,841	2,569	5,410	5,312	4,717
Carteret CC	672	688	1,359	1,356	1,324
Catawba Valley CC	1,885	1,861	3,745	3,436	2,871
Central Carolina CC	1,932	1,718	3,650	3,568	3,367
Central Piedmont CC	5,133	4,817	9,951	9,782	9,417
Cleveland CC	1,065	1,062	2,127	1,983	1,984
Coastal Carolina CC	1,646	1,582	3,228	3,055	2,914
College of The Albemarle	852	820	1,672	1,701	1,588
Craven CC	1,030	1,051	2,081	1,914	1,762
Davidson County CC	1,205	1,197	2,402	2,164	2,077
Durham TCC	1,758	1,726	3,483	3,434	3,126
Edgecombe CC	956	929	1,884	1,758	1,545
Fayetteville TCC	3,706	3,796	7,502	6,847	6,425
Forsyth TCC	2,556	2,449	5,005	4,738	4,262
Gaston College	1,906	1,842	3,747	3,589	3,401
Guilford TCC	3,350	3,116	6,465	6,151	6,030
Halifax CC	754	713	1,467	1,450	1,367
Haywood CC	804	738	1,542	1,532	1,401
Isothermal CC	831	870	1,701	1,570	1,451
James Sprunt CC	621	556	1,177	1,194	1,078
Johnston CC	1,549	1,406	2,954	2,857	2,514
Lenoir CC	1,045	1,019	2,064	1,980	1,899
Martin CC	352	380	731	697	640
Mayland CC	527	512	1,039	1,018	995
McDowell TCC	509	503	1,012	998	962
Mitchell CC	860	838	1,699	1,617	1,507
Montgomery CC	347	352	699	670	569
Nash CC	881	820	1,701	1,604	1,715
Pamlico CC	142	160	302	312	287
Piedmont CC	925	909	1,834	1,767	1,566
Pitt CC	2,371	2,289	4,660	4,350	4,183
Randolph CC	865	849	1,714	1,534	1,403

# North Carolina Community College System

## Course FTE Information System

### Curriculum Two Semester Annualized FTE

#### ANNTBL29

Fall 2003 - Spring 2004

Last Refresh on: 6/14/2005

Colleges	Fall	Spring	2003-2004 Annual FTE	2002-2003 Annual FTE	2001-2002 Annual FTE
Richmond CC	704	679	1,383	1,375	1,192
Roanoke-Chowan CC	390	398	788	812	739
Robeson CC	1,000	894	1,894	1,908	1,791
Rockingham CC	801	828	1,629	1,435	1,551
Rowan-Cabarrus CC	1,892	1,960	3,852	3,234	3,139
Sampson CC	586	519	1,105	1,158	1,027
Sandhills CC	1,611	1,545	3,156	3,051	2,734
Southeastern CC	902	890	1,792	1,850	1,759
South Piedmont CC	652	677	1,328	1,361	1,290
Southwestern CC	767	767	1,534	1,542	1,429
Stanly CC	843	816	1,658	1,499	1,379
Surry CC	1,348	1,241	2,588	2,738	2,675
Tri-County CC	453	474	927	968	967
Vance-Granville CC	1,699	1,626	3,325	3,084	2,908
Wake TCC	3,885	3,753	7,637	7,411	6,961
Wayne CC	1,267	1,253	2,520	2,553	2,372
Western Piedmont CC	1,103	1,070	2,173	2,110	1,799
Wilkes CC	1,176	1,089	2,265	2,216	1,956
Wilson TCC	801	803	1,604	1,410	1,323
<b>Total 2003-2004</b>	<b>75,489</b>	<b>72,952</b>	<b>148,441</b>	<b>0</b>	<b>0</b>
<b>Total 2002-2003</b>	<b>71,972</b>	<b>70,032</b>	<b>0</b>	<b>142,004</b>	<b>0</b>
<b>Total 2001-2002</b>	<b>67,288</b>	<b>65,621</b>	<b>0</b>	<b>0</b>	<b>132,909</b>

# North Carolina Community College System

## Course FTE Information System

### Curriculum Two Semester Annualized FTE

#### Ranked by Annual FTE

ANNTBL29

Fall 2003 - Spring 2004

Last Refresh on: 6/14/2005

Rank	Colleges	Fall	Spring	2003-2004 Annual FTE	2002-2003 Annual FTE	2001-2002 Annual FTE
1	Central Piedmont CC	5,133	4,817	9,951	9,782	9,417
2	Wake TCC	3,885	3,753	7,637	7,411	6,961
3	Fayetteville TCC	3,706	3,796	7,502	6,847	6,425
4	Guilford TCC	3,350	3,116	6,465	6,151	6,030
5	Cape Fear CC	2,841	2,569	5,410	5,312	4,717
6	Forsyth TCC	2,556	2,449	5,005	4,738	4,262
7	Pitt CC	2,371	2,289	4,660	4,350	4,183
8	Asheville-Buncombe TCC	2,155	2,111	4,266	4,046	3,845
9	Rowan-Cabarrus CC	1,892	1,960	3,852	3,234	3,139
10	Gaston College	1,906	1,842	3,747	3,589	3,401
11	Catawba Valley CC	1,885	1,861	3,745	3,436	2,871
12	Central Carolina CC	1,932	1,718	3,650	3,568	3,367
13	Durham TCC	1,758	1,726	3,483	3,434	3,126
14	Vance-Granville CC	1,699	1,626	3,325	3,084	2,908
15	Coastal Carolina CC	1,646	1,582	3,228	3,055	2,914
16	Sandhills CC	1,611	1,545	3,156	3,051	2,734
17	Alamance CC	1,573	1,480	3,053	2,697	2,564
18	Johnston CC	1,549	1,406	2,954	2,857	2,514
19	Caldwell CC & TI	1,464	1,440	2,904	2,815	2,793
20	Surry CC	1,348	1,241	2,588	2,738	2,675
21	Wayne CC	1,267	1,253	2,520	2,553	2,372
22	Davidson County CC	1,205	1,197	2,402	2,164	2,077
23	Wilkes CC	1,176	1,089	2,265	2,216	1,956
24	Western Piedmont CC	1,103	1,070	2,173	2,110	1,799
25	Cleveland CC	1,065	1,062	2,127	1,983	1,984
26	Craven CC	1,030	1,051	2,081	1,914	1,762
27	Lenoir CC	1,045	1,019	2,064	1,980	1,899
28	Robeson CC	1,000	894	1,894	1,908	1,791
29	Edgecombe CC	956	929	1,884	1,758	1,545
30	Piedmont CC	925	909	1,834	1,767	1,566
31	Southeastern CC	902	890	1,792	1,850	1,759
32	Randolph CC	865	849	1,714	1,534	1,403
33	Isothermal CC	831	870	1,701	1,570	1,451
34	Nash CC	881	820	1,701	1,604	1,715
35	Mitchell CC	860	838	1,699	1,617	1,507
36	College of The Albemarle	852	820	1,672	1,701	1,588



# North Carolina Community College System

## Course FTE Information System

### Curriculum Two Semester Annualized FTE

#### Ranked by Annual FTE

ANNTBL29

Fall 2003 - Spring 2004

Last Refresh on: 6/14/2005

Rank	Colleges	Fall	Spring	2003-2004 Annual FTE	2002-2003 Annual FTE	2001-2002 Annual FTE
37	Stanly CC	843	816	1,658	1,499	1,379
38	Blue Ridge CC	855	798	1,653	1,547	1,389
39	Rockingham CC	801	828	1,629	1,435	1,551
40	Wilson TCC	801	803	1,604	1,410	1,323
41	Haywood CC	804	738	1,542	1,532	1,401
42	Southwestern CC	767	767	1,534	1,542	1,429
43	Halifax CC	754	713	1,467	1,450	1,367
44	Richmond CC	704	679	1,383	1,375	1,192
45	Carteret CC	672	688	1,359	1,356	1,324
46	Beaufort County CC	659	674	1,333	1,359	1,290
47	South Piedmont CC	652	677	1,328	1,361	1,290
48	Bladen CC	587	607	1,193	1,071	931
49	James Sprunt CC	621	556	1,177	1,194	1,078
50	Sampson CC	586	519	1,105	1,158	1,027
51	Mayland CC	527	512	1,039	1,018	995
52	McDowell TCC	509	503	1,012	998	962
53	Tri-County CC	453	474	927	968	967
54	Brunswick CC	444	426	870	813	754
55	Roanoke-Chowan CC	390	398	788	812	739
56	Martin CC	352	380	731	697	640
57	Montgomery CC	347	352	699	670	569
58	Pamlico CC	142	160	302	312	287
	<b>Total 2003-2004</b>	<b>75,489</b>	<b>72,952</b>	<b>148,441</b>	<b>0</b>	<b>0</b>
	<b>Total 2002-2003</b>	<b>71,972</b>	<b>70,032</b>	<b>0</b>	<b>142,004</b>	<b>0</b>
	<b>Total 2001-2002</b>	<b>67,288</b>	<b>65,621</b>	<b>0</b>	<b>0</b>	<b>132,909</b>