

**WAKE TECHNICAL COMMUNITY  
COLLEGE**

# **FACT BOOK**

**INSTITUTIONAL EFFECTIVENESS  
AND RESEARCH**

**APRIL 2003**

# **WAKE TECHNICAL COMMUNITY COLLEGE 2003 FACT BOOK**

## **TABLE OF CONTENTS**

<b>Policy Statement .....</b>	<b>1</b>
<b>Purpose of this FACT BOOK .....</b>	<b>2</b>
<b>Mission Statement .....</b>	<b>3</b>
<b>Glossary .....</b>	<b>6</b>
<b>The College.....</b>	<b>11</b>
<b>Service Area: Wake County .....</b>	<b>31</b>
<b>Students .....</b>	<b>33</b>
<b>Continuing Education .....</b>	<b>46</b>
<b>Employees .....</b>	<b>54</b>
<b>Facilities .....</b>	<b>57</b>
<b>Comparisons .....</b>	<b>67</b>

## **POLICY STATEMENT**

### **AFFIRMATIVE ACTION/EQUAL OPPORTUNITY**

Wake Technical Community College offers Equal Employment and Educational Opportunities to all employees, students, prospective employees, and prospective students.

Affirmative Action, Equal Educational Opportunities, and Compliance with the Americans With Disabilities Act are viewed by the Board of Trustees as an integral part of the mission and purpose of Wake Technical Community College.

Questions concerning this policy should be addressed to:

#### **STUDENT MATTERS:**

Dean of Students  
Wake Technical Community College  
9101 Fayetteville Road  
Raleigh, NC 27603-5696

#### **EMPLOYEE MATTERS:**

Human Resources Specialist  
Wake Technical Community College  
9101 Fayetteville Road  
Raleigh, NC 27603-5696

Individuals with disabilities who need assistance or require special accommodations to access College activities should request such services in advance by calling Disability Support Services at (919) 662-3405 or (919) 779-0668 (TDD).

## **PURPOSE OF THIS FACT BOOK**

This **Fact Book** is designed to provide the public whom we serve, college administrators, planners, and other selected individuals such as trustees, local commissioners, legislators, and key college friends with an easily readable compilation of data about the College. While some historical information is included, the data and facts provide a profile of the College for one year. Accumulations of data, such as data for the last five years, are included as appropriate to illustrate change or percent of change.

This book has been compiled by the College's Office of Institutional Effectiveness and Research under the direction of Dr. John B. Boone, Associate Vice President of Institutional Effectiveness and Research.

Every effort has been made to make the **FACT BOOK** as error-free as possible. However, it will be greatly appreciated if typographical errors, incorrect data, and suggestions for improving the **FACT BOOK** are forwarded to the Office of Institutional Effectiveness and Research, Room 128, Holding Hall. Ms. Tammy Stephenson may be reached at 662-3451 and Dr. John Boone at 662-3454



## **MISSION STATEMENT**

The mission of Wake Technical Community College is to provide quality education and training for the workforce including vocational, technical, college/university transfer, and basic skills programs. The College is a public, two-year, comprehensive, post-secondary educational institution. The major purpose is and shall continue to be the offering of quality vocational and technical education and training. Through its open-door policy, the college offers educational opportunities to all adults regardless of age, sex, socio-economic status, ethnic origin, race, religion, or disability.

## **ROLE AND SCOPE**

In order to implement its mission through clearly defined programs and services, the College:

offers credit programs leading to associate degrees, diplomas and certificates designed for immediate entry into employment, an associate degree in general education, and associate degrees designed to transfer to four-year institutions. The College also offers pre-curriculum programs for students to develop academic proficiency so that they may successfully complete curriculum courses.

provides occupational career enhancement programs for individuals and support for economic development to businesses, industries, and agencies. Basic skills education, English as a Second Language, and a wide variety of continuing education courses and programs for personal enrichment are offered on campus and throughout the county. The College further serves its constituents by providing a broad range of community services, partnerships and outreach programs.

provides a wide range of support services designed to assist students in successfully fulfilling their education and occupational goals. These services, developed to meet the diverse needs of individual students, begin with their initial contact with the College and continue throughout their enrollment and job placement or transfer for further study.

practices sound fiscal management and systematic planning to provide facilities, equipment, and state-of-the art technology to ensure quality education opportunities at secure facilities accessible to Wake County citizens.

## **OUR VISION**

Wake Tech will be a leader among the 59 NCCCS institutions and will:

- ◆ strive for quality and excellence in all educational programs by closely monitoring students satisfaction and success through a comprehensive system of research and institutional effectiveness

- ◆ position itself as a primary choice of Wake County citizens for workforce development, occupational, college/university transfer, basic education, and lifelong learning opportunities.
- ◆ be a major partner in attracting new and expanding business and industry by emphasizing human resource development and technology transfer.
- ◆ maximize service to area citizens by listening and responding to changing educational needs.

## **COLLEGE GOALS**

### **Student Success**

Provide a dynamic learning environment to ensure successful achievement of students' goals by administering sound policies, curricula, instruction and support services.

### **Workforce Development**

In collaboration with *Regional Economic Development Partnerships*, identify the workforce needs of emerging jobs in rural and urban economies in North Carolina. Develop and implement the educational and training programs necessary to meet the workforce needs of each region and college services area and promote recruitment, retention and development of high quality faculty and staff necessary to achieve the educational and training objectives of the community college system and provide North Carolina with a world-class workforce.

### **Diverse Populations Learning Needs**

Provide North Carolina citizens with the opportunity to develop essential skills for lifelong learning. Upgrade and retrain North Carolina learners for the workplace through flexible, accessible, customized educational and training programs within their communities.

### **Resources**

Continuously research, analyze and secure the resources necessary to fulfill the mission of the North Carolina Community College System and develop processes for measuring the effectiveness of resource allocations and utilization, within the North Carolina Community College System.

**Technology**

Encourage and support North Carolina Community College faculty and staff in the effective and efficient uses of instructional technology and administrative computing systems to improve the delivery of academic programs to North Carolina citizens.

**Community Services**

Provide courses and support service activities for the enrichment of the community's civic, economic, and cultural needs.

**Southern Association of Colleges and Schools Accreditation**

Wake Technical Community College is accredited by the Commission on Colleges of the Southern Association of Colleges and Schools (1866 Southern Lane; Decatur, Georgia 30033-4097; Telephone Number 404-679-4501) to award the associate degree.

## GLOSSARY

**Academic Extension (non-credit) Courses** consist of single courses, each complete in itself, designed to serve the academic educational needs of adult citizens.

**Academic Semester** - A sixteen week period during which credit classes are offered.

**Academic Year** - The academic year includes fall and spring semesters as well as an eleven-week summer term.

**Accreditation** - A formal means of recognizing an institution for maintaining standards that qualify the graduate for admission to higher institutions or for professional practice. Accrediting agencies are responsible for establishing the standards and evaluating the school's compliance with them (e.g., Southern Association of Colleges and Schools, American Dental Association, Engineering).

**Accountability** - The acceptance of personal responsibility for the achievement of predetermined measurable objectives.

**Adult Education** - Programs offered by a community college or technical institute that provide opportunities for adults and out-of-school youth to further their education.

**Associate in Applied Science Programs** - These programs range from 64 to 76 semester hour credits. A full-time student can typically complete one of these programs within two years. In addition to major course work, associate in applied science degree programs require a minimum of 15 semester hour credits of general education. General education requirements include course work in communications, humanities/fine arts, social/behavioral sciences and natural sciences/mathematics. Certain courses in associate degree programs may be accepted by a four-year college or university for transfer credit in an associated field.

**Average Annual FTE** - The annualized FTE of the fall and spring semesters added together for a given year.

**Example:** One full-time equivalent (FTE) student represents 16 student membership hours per week for 16 weeks or 256 student membership hours for each semester enrolled. Thus, if:

Fall Semester =  $\frac{1,301,151}{512}$  membership hours = 2541 FTE  
512 membership hours annualized  
(256 X 2 semesters = 512)

Spring Semester =  $\frac{1,245,103}{512}$  = 2432 FTE

Average Annual FTE = 2541 (Fall)  
+2432 (Spring)  
4973

**Avocational Extension (non-credit) Courses** consist of single courses, each complete in itself, which focus on an individual's personal or leisure needs rather than his occupation, profession, or employment.

**Basic Skills** - One of the primary missions of Wake Tech is to offer educational opportunities for adults 16 years of age and older who are out of school. Wake Tech provides educational opportunities through five major literacy components, consisting of classes located at work sites, churches, community centers, schools, libraries, sheltered workshops, prisons and the community college campuses.

**Adult Basic Education (ABE)** - A program of basic skills for adults, 16 years of age or older and out of school, who function at less than a high school level.

**General Educational Development (GED)** - A high school equivalency program enabling adults to take the General Education Development Tests to determine if they are at the 12th grade completion level of English, social studies, science, reading, and math. Individuals achieving the required scores on the GED are awarded the High School Equivalency Diploma. The program is open to individuals 18 years or older.

**Adult High School (AHS)** - A program of instruction offered cooperatively with local public school systems to help students earn an adult high school diploma.

**English as a Second Language (ESL)** - A program of instruction to help adults with limited or no English language proficiency.

**Compensatory Education** - A special state-funded educational program for developmentally handicapped adults (over 17 years of age).

**Base Budget** - Appropriations made by the Legislature to fund the current level of operation.

**Capital Outlay** - Capital outlay expenditures are those that result in the acquisition of fixed assets or additions to fixed assets (i.e., expenditures for land, buildings, or equipment).

**Categorical Funds** (restricted) - Funds from a federal, state, local, or private source that are restricted to expenditures in a particular category or program.

**Certificate Programs** - These programs range from 12 to 18 semester hour credits and can usually be completed within one semester by a full-time student. Associate degree level courses within a certificate program may also be applied toward a diploma or an associate in applied science degree.

**Certification** - A voluntary form of recognition for knowledge and skill in a particular profession.

**Clock Hour** - One hour of instruction given one student. Class periods from 50-60 minutes may be counted as one clock hour depending on the type of instruction delivered.

**College Transfer Programs** - These programs are offered through the Associate in Arts, Associate in Fine Arts and Associate in Science degrees. The Associate in Arts and the Associate in Science programs are part of the Comprehensive Articulation Agreement (CAA). This agreement addresses the transfer of students between institutions in the North Carolina Community College System and the constituent institutions of the University of North Carolina System.

**Community Service Programs** consist of those continuing education (extension) programs that are directed to the academic, avocational, and development of personal skills of the community.

**Competency-Based Instruction** - Instruction based on measurable student performance outcomes consistent with the skills and knowledge needed by entry-level employees in a particular field.

**Continuing Education/Extension Programs** include New and Expanding Industry, and Self-Supporting Recreational programs in addition to the Regular Budget Extension program areas of Adult High School, Academic Extension, Avocational Extension, Occupational Extension, Practical Skills, Adult Basic Education and Compensatory Education.

**Credit Hour** - An instructional unit used for recognition of the amount of credit a student earns for a given course. Example: Semester Credit Hour - A student who spends one classroom hour per week in a class for sixteen weeks earns one semester hour credit.

**Current Expense** - Funds used for the general operation of the institution to include salaries, benefits, and other instructional costs.

**Curriculum Programs** - A term used to describe a wide variety of planned educational programs which range in length from one semester to two years. The programs lead to certificates, diplomas or associate degrees, depending on the nature of the curriculum. Curriculum programs include certificate, diploma, Associate in Applied Science, Associate in Arts, Associate in Fine Arts, Associate in Science and Associate in General Education programs.

**Developmental Education** - A program providing specialized credit courses for students who need to improve their basic skill in order to perform at the level required for admission to degree and diploma programs. Usually these courses are in reading, writing, and mathematics.

**Diploma Programs** - These programs range from 36 to 48 semester hour credits and can usually be completed by a full-time student within two semesters and one summer term. Associate degree level courses within a diploma program may also be applied toward an Associate in Applied Science degree.

**English as a Foreign Language (EFL)** A pre-curriculum program designed to help non-native speaking students acquire sufficient skills in English to enter and succeed in curriculum (academic) programs. These courses are available only on Wake Tech's 401 South Campus.

**English as a Second Language (ESL)** - A program of instruction to help adults with limited or no English language proficiency. These courses are usually offered through continuing education at off-campus sites for students who have non-academic goals such as improvement of job performance, better communication with family members or the general public, etc.

**Expansion Budget** - Additional funds from the Legislature to increase the quantity or quality of services rendered.

**Fiscal Year** - The twelve-month period upon which the institution's budget is based, July 1 - June 30.

**Full-Time Equivalent (FTE)** - One full-time equivalent (FTE) student represents 16 student membership hours per week for 16 weeks or 256 student membership hours for each semester enrolled.

**Annual Curriculum FTE** - The total of fall and spring FTE.

**Annual Extension FTE** - The total of spring, summer and fall sequenced periods FTE.

**Budget Full-Time Equivalent (B/FTE)** - Used to prepare the operating budget and to provide for an equitable distribution of the operating funds allocated by the State Board to the institutions.

**Equipment Full-Time Equivalent (E/FTE)** - Used to prepare the equipment budget and to provide for an equitable distribution of the equipment funds allocated by the State Board to the institutions.

**Library Full-Time Equivalent (L/FTE)** - Used to prepare the library budget to provide for an equitable distribution of library funds allocated for the purchase of library books and audiovisual materials.

**Credit Hour Full-Time Equivalent (H/FTE)** - Used in furnishing data to the North Carolina Commission on Higher Education Facilities and the University of North Carolina.

**Construction Full-Time Equivalent (C/FTE)** - Used to determine priorities and institutional eligibility for federal and state construction funds for the institutions.

**Full-Time Students** - A student is considered full time if he/she carries 12 or more semester credit hours of classes.

**General Education Programs** - These programs are designed for individuals wishing to broaden their education, with emphasis on personal interest, growth and development. The two-year General Education program provides students opportunities to study English, literature, fine arts, philosophy, social science, science and mathematics at the college level. All courses in the program are college-level courses. Many of the courses are equivalent to college transfer courses; however, the program is not principally designed for college transfer. Successful completion of 64-65 semester hour credits leads to an associate in general education degree.

**Human Resources Development (HRD)** - A program for chronically unemployed adults with prevocational training and counseling.

**Job Training Partnership Act (JTPA)** - A federal program designed to provide job training and employment opportunities for economically disadvantaged, unemployed, or underemployed persons.

**Learning Laboratory Programs (Center)** consists of resources to help students succeed in their courses of study at Wake Tech. A learning lab coordinator or instructor offers one-on-one tutorial assistance, combined with a variety of other techniques and materials such as audiovisual and computer equipment and self-instructional materials, in an effort to help students learn.

**New and Expanding Industry Programs** provide for the training needs of new industries which are moving into the state and also for existing industries undergoing a major expansion which result in the need for additional skilled manpower.

**Non-Credit (Extension) Courses** - Courses for professional training, upgrading or general interest.

**Occupational Education** - Any type of instruction or training (credit or non-credit) that prepares one to enter an occupation.

**Other Costs** - A term used to describe current instructional and operating instructional support costs excluding personnel and the associated fringe benefits. The term is used for supplies, travel, postage, etc.

**Pell Grants** - Needs-based federally funded grants.

**Practical Skills Extension (non-credit) Programs** consist of single courses each complete in itself, designed to provide practical training for persons pursuing additional skills which are not considered their major primary vocation but may supplement income or may reasonably lead to employment.

**Regular Budget Extension Programs** include Adult High School, Occupational Extension, Adult Basic Education and Compensatory Education.

**Self-Supporting Recreational Programs** are self-supporting courses which the college may provide at the request of the community but for which the college receives no budgetary credit.

**Unduplicated Headcount** - The total number of students (both full-time and part-time) enrolled in all courses during a year. Each student is counted only once during the year regardless of the number of classes he/she takes or the number of semesters for which he/she registers.

**Source:** A Matter of Facts, The North Carolina Community College System Fact Book, 1998.

Annual Statistical Report, 1998-1999, North Carolina Community College System.



# **THE COLLEGE**

## **HISTORY**

### **WAKE TECHNICAL COMMUNITY COLLEGE**

Wake Technical Community College is a public educational institution, nonprofit and tax supported, under the control of a Board of Trustees. It is an institutional member of the North Carolina System of Community Colleges, State Board of Community Colleges. Authority for the establishment of the College is found in Chapter 115D of the General Statutes of North Carolina and the amendments thereto.

The College was chartered April 3, 1958, as the Wake County Industrial Education Center under the governance of the Wake County Board of Education. In 1961, the Board employed Dr. Kenneth M. Wold as the Center's first Director and charged him with the responsibility of "developing a program of training for adults."

Because there was no central training facility, the first training efforts were conducted in cooperation with employers and users of the training. Practical nursing classes, for example, were held at Wake Memorial Hospital; fire prevention and lifesaving classes were held among area fire departments; and instruction in machine operating and supervision was provided at industrial locations.

On October 7, 1963, operation of the Center began at its present location in a single building of 40,795 square feet and costing \$560,000. There were 34 full-time students enrolled in classes on campus and an additional 270 enrolled in industrial training programs at locations throughout the County.

On January 8, 1964, the Center was formally dedicated as the W. W. Holding Industrial Education Center and was transferred from the authority of the Board of Education to an eight-member Board of Trustees.

In September 1965, Dr. Kenneth M. Wold resigned as Director, and Robert W. LeMay, Jr., head of the Center's general adult and community service programs, was named Acting Director. Mr. LeMay was named President on February 16, 1966.

On March 3, 1966, W. W. Holding Industrial Education Center was granted approval by the State Board of Education as the W. W. Holding Technical Institute.

The name was changed to Wake Technical Institute in 1974 and to Wake Technical College on March 1, 1980. The name was changed to Wake Technical Community College on December 1, 1987, to better reflect the college-level instruction that is provided.

Robert W. LeMay, Jr., served as President through June 30, 1979, at which time James A. Cox, the College's Vice President for Administration, was appointed temporary President. He served until June 30, 1980.

Dr. Bruce I. Howell was named the College's third President on July 1, 1980.

The College has grown since 1963 from the one building of 40,795 square feet to three campuses and facilities that include twenty-two permanent structures totaling over 500,000 square feet.

Today these facilities and a staff and faculty of just over 490 people serve a curriculum unduplicated headcount of approximately 12,000. When non-credit instruction is added to the College's service to Wake County citizens, approximately 44,000 persons take one or more courses annually.

The College entered a contractual agreement with the University of North Carolina at Greensboro to offer college transfer courses in the fall of 1991. Subsequently, a college transfer program was approved to be offered by Wake Tech in the fall quarter of 1992. Students enrolled in the College Transfer program earn Associate in Arts and Associate in Science degrees. The College became a fully comprehensive community college in the fall of 1992.

The Wake Technical Community College News and Observer Adult Education Center formally opened in August 1993. The Center was made possible through a \$100,000 gift from the News and Observer Foundation. Located on Capital Boulevard, the Center provides a home for the College's basic skills program, one of the largest in the North Carolina Community College System. The Adult Education Center also is the headquarters for Wake Tech's Small Business Center.

Wake Tech's share of county and state bond referendums held in 1993 was \$41 million. These funds were designated to build a student education/classroom building, connect the main campus to Fuquay-Varina's waste water treatment plant, construct a parking deck at the Health Education Campus, and renovate and repair existing facilities. During the summer of 1994, construction began on the student education/classroom building, and it was opened on December 3, 1996.

In January 1994, Wake Tech acquired 132 acres of land on Highway 401 North for a site for a northeast Wake County campus. This campus will serve the residents of northern Wake County. Wake Tech was designated a multi-campus college by the State Board of Community Colleges on February 16, 1996.

After a two-year in-depth self-study and an on-site visit by collegiate peers from across the southeastern United States in March 1995, Wake Tech's accreditation to award the associate degree was reaffirmed by the Commission on Colleges of the Southern Association of Colleges and Schools for another ten years.

In the fall of 1997, Wake Tech, along with the other 57 colleges of the North Carolina Community College System, converted from the quarter system to the semester system.

On June 19, 1998, the State Board of Community Colleges approved Wake Tech's request to change the Allied Health Center to the Health Sciences Campus.

In 2001 Wake Tech purchased 12 acres adjacent to Tech Road (SR 2811) and the US 401 South Main Campus for the construction of additional parking spaces for faculty, staff and students.

In 2002 Wake Tech along with several other community colleges (Edgecombe, Johnston, Nash, Wayne, and Wilson) opened the eastern North Carolina Plastics Technology Center in Zebulon (Wake County). This 8,000 square foot building will house the specialized laboratory courses associated with the Manufacturing Technology/Plastics Program at each of these six institutions.

## **FACILITIES GROWTH**

When Wake Tech opened in 1963, there was one building of 40,795 square feet on a 30.8 acre tract. This building, named in honor of W. W. Holding, a long-time member of the Wake County Board of County Commissioners, was twice enlarged to its present size of 43,348 square feet.

In 1966-67, a maintenance shop and a laboratory building of 8,990 square feet were added to the campus. Additional property was purchased between 1968 and 1972, which increased the campus size to 76.64 acres.

In 1968, the business education building of 22,540 was constructed and named in honor of Leo Pucher, the College's first Board of Trustees Chairman who was also instrumental in founding the College. Also, vocational laboratories were expanded in 1968 and a 36,405 square-foot addition, which was named in honor of Dr. I. E. Ready who was Director of the Department of Community Colleges, was completed.

Two buildings and approximately 3.5 acres adjacent to Wake Medical Center were dedicated in 1972 by the Wake County Commissioners for health education. Subsequently, a power mechanics laboratory building was completed in 1974 on the main campus.

By 1975, a student services building of 28,066 square feet was constructed for the rapidly increasing student body. This facility was named in honor of Robert W. LeMay who served as President from 1966 until 1979.

Maintenance and storage facilities were added in 1980.

The technical education building, occupied in 1982, provides 40,860 square feet of classroom, laboratory and auditorium space for the conduct of technical education.

The College continued to grow with a 8,320 square-foot microelectronics laboratory addition completed in early 1984.

A mechanical technology building was completed in 1987. In approximately 16,980 square feet of space, this building provides space for a machine shop, two automation/robotics laboratories, and three classrooms.

In late 1988, construction was completed on a 84,000 square-foot library education building. This building features a 28,000 square-foot library with study rooms, drafting and typing labs; an enlarged audiovisual area with a new studio and two darkrooms; two architectural drafting labs; and 36 additional classrooms.

The 1990-91 school year was a busy one for campus construction. A 16,600 square-foot child care center was completed. It includes classrooms, offices, child care areas, and a full-service kitchen. Also, a 32,000 square-foot health education building that houses a library, offices,

classrooms, and laboratories was completed. Additional parking was provided for both facilities.

In August 1993, the College, with the assistance of a \$100,000 gift from the News and Observer Foundation, opened the News and Observer Adult Education Center. Located on Capital Boulevard, the Center provides a home for the College's basic skills program, one of the largest in the North Carolina Community College System. The 21,545 square-foot leased building, previously occupied by Hardbarger Business College, includes 12 classrooms, three computer labs, a student lounge, ten offices, a seminar/conference room, and a full resource center with individualized learning materials.

In 1996, Wake Tech opened a parking deck at the Health Sciences Campus and a 110,000 square-foot Student Education building on Main Campus. The Student Education building houses the Hotel and Restaurant Management and Culinary Arts programs and the kitchens and other facilities necessary for those programs, a conference center, and new cafeteria.

During the summer of 1998, the College purchased the Wells Furniture Company property at the corner of U.S. 401 south and Tech Road (SR 2811). This adds 14,200 square feet to the College's facilities inventory.

The College currently owns 509,779 gross square feet (exterior wall measurement), of which 22,260 is leased and 363,626 square feet are assignable to, or available for assignment to, an occupant or specific use.

In the Spring 2000, Wake Tech opened the Business and Industry Center located at 600 New Waverly Place, Cary. The 14,963 square-foot leased building includes five computer labs, three classrooms, two conference rooms and ten offices.

In 2001 Wake Tech purchased 12 acres and constructed additional parking spaces adjacent to Tech Road (SR 2811) behind the Wells Furniture Company property.

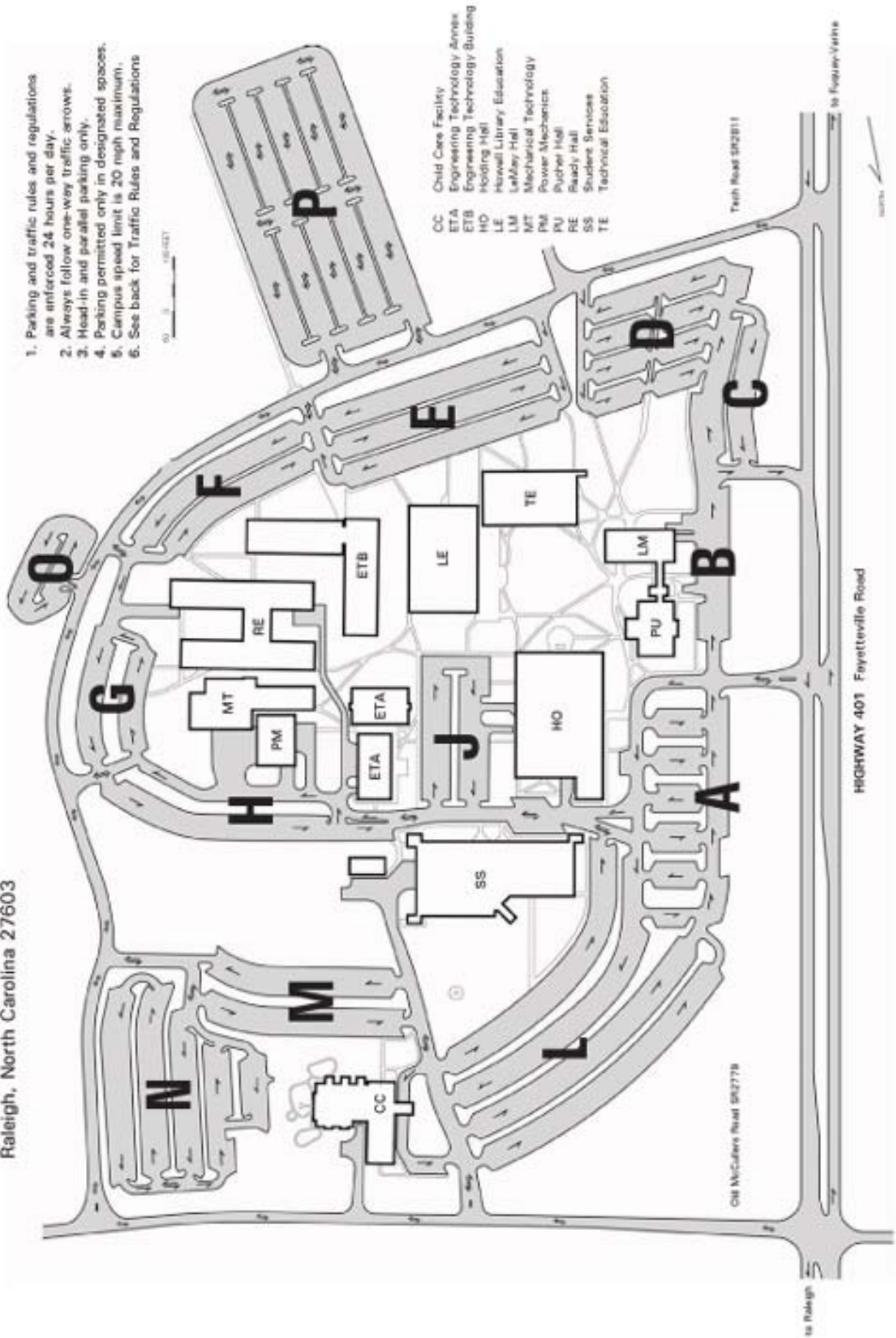
In 2002 Wake Tech along with several other community colleges (Edgecombe, Johnston, Nash, Wayne, and Wilson) opened the Eastern North Carolina Plastics Technology Center in Zebulon (Wake County). This 8,000 square foot building will house the specialized laboratory courses associated with the Manufacturing Technology/Plastics Program at each of these six institutions.

# WAKE TECHNICAL COMMUNITY COLLEGE PARKING MAP

## MAIN CAMPUS

9101 Fayetteville Road  
Raleigh, North Carolina 27603

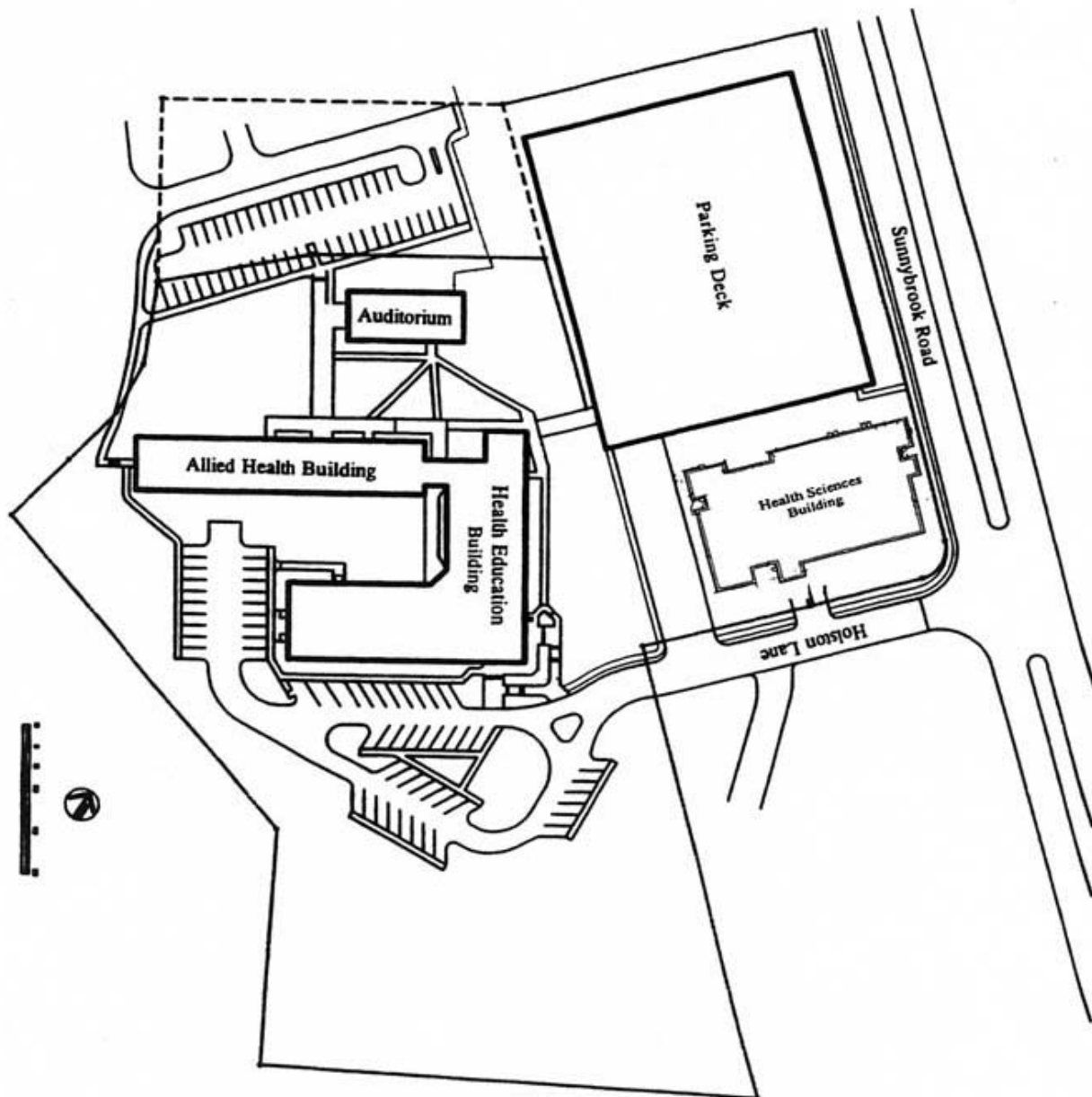
1. Parking and traffic rules and regulations are enforced 24 hours per day.
2. Always follow one-way traffic arrows.
3. Head-in and parallel parking only.
4. Parking permitted only in designated spaces.
5. Campus speed limit is 20 mph maximum.
6. See back for Traffic Rules and Regulations



# Wake Technical Community College

## Health Sciences Campus Plan

Raleigh, North Carolina



## MEMBERS OF THE BOARD OF TRUSTEES

	<u>Beginning of Term</u>	<u>End of Term</u>
* Lide Cooke Anderson	July 1993	June 2005
Doris M. Burke	June 2000	June 2004
Wanda W. Denning	July 2001	June 2005
Johnny I. Farmer	October 1995	June 2003
Barbara T. Flood	July 1990	June 2005
George N. Hamrick	June 1998	June 2006
Harvey L. Montague	July 1996	June 2004
Jim W. Perry	November 2002	June 2006
** James O. Roberson	July 1996	June 2004
R. Keith Shackelford	August 2002	June 2006
James R. Talton, Jr.	October 2001	June 2003
Robert M. Zippay	August 2002	June 2003
President, Student Government Association		

## FORMER MEMBERS OF THE BOARD OF TRUSTEES

**/*	Lawrence E. Allen, Sr.	July 1975	June 1995
**/**	William D. Ashley	November 1965	June 1973
	Joseph S. Ashworth	July 1989	February 1995
***	Thomas R. Ashworth	June 1977	June 1989
***	W. W. Balentine	October 1963	June 1965
	Robert J. Barker	June 1995	June 2001
***	A. L. Becker	September 1967	June 1975
	David B. Bell, Jr.	July 1985	June 1996
***	W. Jennings Booth, Sr.	August 1975	September 1986
	Ralph G. Brashear	October 1979	June 1985
	Joan H. Burkhardt	July 1990	June 1998
**	Donald H. Carpenter	August 1971	June 1979
	Harry K. Clark, II	February 1974	November 1978
***	F. Roland Danielson	July 1977	September 1979
	C. P. Dean	November 1965	June 1977
	Paul A. DelaCourt	August 1967	June 1975
***	Anthony DeLisse	February 1965	June 1977
***	W. G. Enloe	December 1965	June 1966
***	Emol A. Fails	January 1976	May 1978
	Ralph E. Forrest	June 1978	June 1991
**/**	Mary M. Gentry	August 1971	June 1987
	William T. Graham	July 1995	June 1999



***	T. M. Grimes	October 1963	June 1971
	W.H. (Buddy) Holding	July 1979	June 1992
	Joseph Q. Holliday	September 1967	June 1977
***	William W. Johnson	October 1963	June 1967
	Walter M. Keller	February 1987	June 1995
	Henry C. Knight	June 1998	June 2002
	E. A. Loeser	November 1965	December 1966
	Paul M. Maulsby	October 1995	October 2001
	Joy E. Paige	July 1999	June 2003
*	Don H. Perry	January 1993	June 2002
**	Robert A. Pittillo, Jr.	December 1963	June 1967
*/***	Leo E. Pucher	October 1963	June 1979
	Phillip O. Redwine	January 1970	June 1977
***	Carter S. Schaub	October 1963	June 1973
	Lee C. Smith	November 1965	August 1966
	Melba T. Sparrow	July 1987	April 1993
	Jack M. Stancil	July 1996	June 2000
*	James P. Swindell	July 1977	June 1997
	William F. Troxler	July 1979	June 1987
	Harold H. Webb	July 1973	June 1981
	Willi T. Webb	July 1991	June 1995
	James C. Wheeler	July 1990	December 1992
***	C. V. Whitley	October 1963	June 1965
	Cliffornia Wimberley	January 1979	June 1990
***	W.L. Woodard	July 1967	June 1975

\*Chairman

\*\*Vice-Chairman

\*\*\*Deceased

## **WAKE TECHNICAL COMMUNITY COLLEGE FOUNDATION, INC.**

Wake Technical Community College Foundation is a 501 (c) (3) nonprofit corporation established to serve as a conduit for a strong financial partnership with the private sector, supporting the community mission of Wake Technical Community College with gifts of cash and in-kind contributions of equipment and services that enhance the College's ability to fulfill its mission.

A 26-member Board of Directors comprised of community and business leaders in the Triangle area promote and administer a variety of funds from the private sector, including:

The Wake Tech Fund is the general fund that supports programs that receive limited or no support from traditional tax revenues, including institutional opportunities, student scholarships, financial aid grants, professional development needs of faculty and staff, the acquisition of state-of-the-art equipment and other areas that elevate the College's service role in the community to a greater prominence.

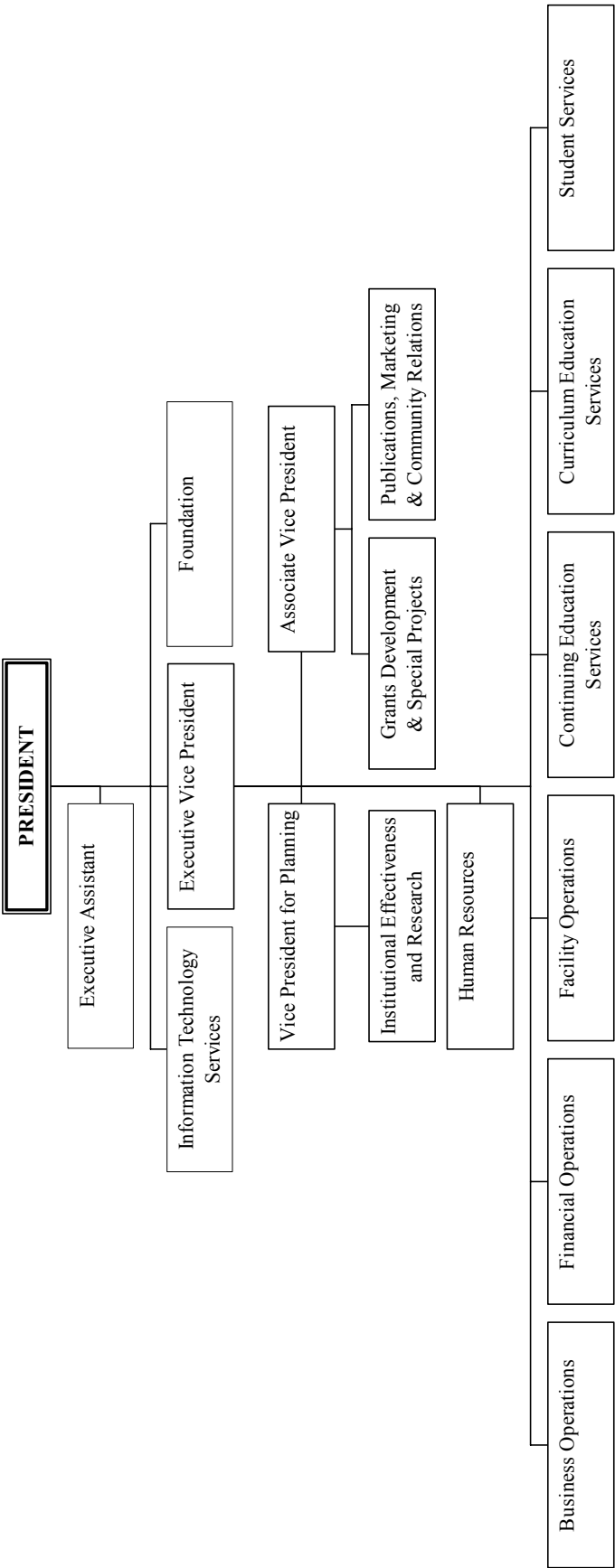
Donor-Restricted Funds benefit the interests of the donor as well as the College by providing restricted gifts to specific academic programs and scholarships that accommodate and address certain employment needs.

Endowment Funds are often established through various estate or major gifts which qualify for special tax consideration, creating permanent funds from which the interest income can be allocated to a specific area or serve as a source of supplemental revenues to state and local taxation.

Gifts-in-Kind from business and industry enhance and improve the quality of Wake Tech's instructional programs and labs with equipment that keeps technology current and instruction up to industry standards.

Since 1988, corporations, businesses, alumni, friends, trustees and employees have strengthened Wake Tech's programs with cash and noncash gifts to Wake Technical Community College Foundation totaling nearly \$5 million.

OFFICE OF THE PRESIDENT



## MEMBERSHIPS, APPROVALS, AND ACCREDITATIONS

### **The College Is A Member Of:**

American Association of Collegiate Registrars and Admissions Officers  
American Association of Community Colleges  
American Association for Higher Education  
American Technical Education Association  
Association of Collegiate Schools of Architecture  
Association of community College Trustees  
Association on Higher Education and Disability  
Carolinas Association of Collegiate Registrars and Admissions Officers  
Chamber of Commerce--Apex  
Chamber of Commerce--Cary  
Chamber of Commerce--Fuquay-Varina  
Chamber of Commerce--Garner  
Chamber of Commerce--Knightdale  
Chamber of Commerce--Morrisville  
Chamber of Commerce--Raleigh  
College and University Mail Services  
College Board  
College News Association of the Carolinas  
Community College Leadership Institute  
Community Education Network  
Cooperative Education Association, Inc.  
Council on Hotel, Restaurant, and Institutional Education  
National Alliance of Community and Technical Colleges  
National Association for Adults with Special Learning Needs  
National Association for Foreign Student Affairs  
National Association of Colleges and Employers  
National Association for Student Financial Aid Administrators  
National Commission for Cooperative Education  
National Council for Marketing and Public Relations  
National Council for Research and Planning  
National Council for Student Development  
National Initiative for Leadership and Institutional Effectiveness  
National League for Nursing  
National Prime Users Group  
National Restaurant Association  
National Safety Council  
North Carolina Association of Colleges and Universities  
North Carolina Association of Community College Business Officials  
North Carolina Association of Community College Trustees  
North Carolina Association of Coordinators of Veterans Affairs  
North Carolina Association on Higher Education and Disability  
North Carolina Bar Association  
North Carolina Citizens for Business and Industry

North Carolina Restaurant Association  
Project Seraphim  
Raleigh-Wake Personnel Association  
Society for Human Resource Management  
Southeastern Association of Colleges and Employers  
Southeastern Testing Association  
Southern Association of Collegiate Registrars and Admissions Officers  
Southern Association of Community, Junior, and Technical Colleges  
Travel Council of North Carolina  
Wake County Interagency Council for the Homeless  
Wake County Interagency Council for Youth

**The College Is Approved By:**

Division of Vocational Rehabilitation  
Insurance Agents Pre-Licensing Education Program  
North Carolina Department of Insurance  
North Carolina Office of Emergency Services  
North Carolina Real Estate Licensing Board  
North Carolina State Approving Agency for Veterans Education and Training  
North Carolina State Board of Community Colleges

**The College Is Accredited By:**

Wake Technical Community College is accredited by the Commission on Colleges of the Southern Association of Colleges and Schools (1866 Southern Lane, Decatur, Georgia 30033-4097; Telephone Number (404) 679-4501 to award the associate degree.\*

North Carolina Criminal Justice Education and Training Standards Commission

**The College Has Certain Programs Accredited By:**

Accreditation Board for Engineering Technology\*\*  
Commission on Dental Accreditation, American Dental Association\*\*\*  
Committee on Allied Health Education and Accreditation:  
    American Association of Medical Assistant's Endowment  
Joint Review Committee on Education in Radiologic Technology  
    National Accrediting Agency for Clinical Laboratory Sciences  
North Carolina Board of Nursing  
The Medical Assisting Program is accredited by the Commission on Accreditation of Allied Health Education Programs (CAAHEP); on recommendation of the Committee on Accreditation for Medical Assistant Education\*\*\*\*

\*When it is appropriate to refer to the status between Wake Technical Community College and the Commission on Colleges in catalogs, brochures, and advertisements, the following statement is to be used: **"Wake Technical Community College is accredited by the Commission on Colleges of the Southern Association of Colleges and Schools (1866 Southern Lane, Decatur, Georgia 30033-4097; Telephone Number (404) 679-4501) to award the associate degree."**

\*\*Five of Wake Technical Community College's Engineering Technology curriculums are nationally accredited by the Technology Accreditation Commission of the Accreditation Board for Engineering and Technology, Inc. The programs are Automation/Robotics Technology, Civil, Computer, Electronics and Mechanical Engineering Technology.

\*\*\*The program in Dental Assisting is accredited by the Commission on Dental Accreditation of the American Dental Association.

\*\*\*\*aka The Curriculum Review Board of the American Association of Medical Assistants' Endowment (AAMAE).

# PROGRAMS OFFERED

## at

## WAKE TECHNICAL COMMUNITY COLLEGE

### *Associate Degree Programs*

A degree is awarded for successful completion of a two-year program of study.

#### General Education

- B Associate in General Education A10300

#### College/University Transfer

- B Associate in Arts A10100
- B Associate in Science A10400

#### Business Education

- B Accounting A25100
- B Business Administration A25120
- B Business Administration/Electronic Commerce A2512I
- B Business Administration/Human Resources Management A2512C
- B Criminal Justice Technology A55180
- D Culinary Technology A55200
- B Early Childhood Associate A55220
- D Hotel and Restaurant Management A25240
- D Medical Office Administration A25310
- D Office Systems Technology A25360
- D Office Systems Technology/Legal A2536A

#### Computer Information Systems

- B Computer Programming A25130
- B High Performance Computing A25230
- B Information Systems A25260
- B Information Systems/Helpdesk and Support A2526B
- B Internet Technologies A25290
- B Networking Technology A25340

#### Engineering Technology

- D Architectural Technology A40100
- B Automation/Robotics Technology A40120
- D Civil Engineering Technology A40140
- B Computer Engineering Technology A40160
- B Electronics Engineering Technology A40200

- D Electronics Engineering Technology/Instrumentation A4020A
- D Environmental Science Technology A20140
- B Industrial Engineering Technology A40240
- D Industrial Pharmaceutical Technology A20180
- D Landscape Architecture Technology A40260
- D Manufacturing Engineering Technology A40300
- D Manufacturing Technology/Plastics A5032A
- B Mechanical Engineering Technology A40320
- B Scientific Graphics Technology A40360
- D Surveying Technology A40380
- B Telecommunications and Network Engineering Technology A40400

#### Health Sciences

- D Associate Degree Nursing A45120
- D Dental Hygiene A45260
- D Emergency Medical Science A45340
- B General Occupational Technology A55280
- B Human Services Technology A45380
- B Human Services Technology/Developmental Disabilities A4538A
- B Human Services Technology/Substance Abuse A4538E
- D Medical Laboratory Technology A45420
- D Radiography A45700

#### Vocational Technology

- D Automotive Systems Technology A60160
- D Electrical/Electronics Technology A35220
- D Electronic Servicing Technology A50120
- D Heavy Equipment and Transport Technology A6024B
- D Industrial Systems Technology A50240
- D Machining Technology A50300
- D Machining Technology/Tool, Die, and Mold Making A5030A
- D Mechanical Drafting Technology A50340

### *Diploma Programs*

A diploma is a one-year course of study focusing upon marketable skills

#### Business Education

- B Early Childhood Associate D55220A
- D Office Systems Technology D25360A

#### Engineering Technology

- D Manufacturing Technology/Plastics D5032AB

#### Health Sciences

- D Computed Tomography and Magnetic Resonance Imaging Technology D45200
- D Dental Assisting D45240
- B Medical Assisting D45400
- D Surgical Technology D45740

#### Vocational Technology

- D Air Conditioning, Heating, and Refrigeration Technology D35100A
- D Automotive Systems Technology D60160A
- D Electrical/Electronics Technology D35220A
- D Electronic Servicing Technology D50120A
- D Heavy Equipment and Transport Technology D6024BA
- D Industrial Systems Technology D50240A
- D Machining Technology D50300A
- D Mechanical Drafting Technology D50340A
- D Plumbing D35300
- D Welding Technology D50420A

#### *Legend*

- D = Day
- E = Evening
- B = Both
- \* = Weekend College

*More Programs Listed on Reverse*

## Certificate Programs

A certificate is a short course of study, often less than one year, providing skills in a specific area.

### Business Education

- E Business Administration:
  - Customer Service C25120B
- B Business Administration:
  - Sales Development C25120A
- B Business Administration/Human Resources Management C2512CA
- E Culinary Technology C55200A
- B Early Childhood Associate C55220B
- D Medical Office Administration C25310A
- B Office Systems Technology: Word Processing C25360B
- E Real Estate C25400A
- E Real Estate Appraisal C25420

### Computer Information Systems

- B Computer Programming: C++ Programming C25130C
- B\* Computer Programming: Internet Programming C25130A
- B Computer Programming: Oracle Programming C25130D
- B\* Computer Programming: Visual Basic Programming C25130B
- B High Performance Computing: CCNP C25230C
- B Information Systems: Database Management C25260F
- B Information Systems: Graphics Design C25260C
- B Information Systems: Hardware Troubleshooting and Repair C25260G
- B Information Systems: M.O.U.S. C25260A
- B\* Information Systems: Networking C25260D
- B Information Systems: Spreadsheet Management C25260E
- B Information Systems: Web Services C25260H
- B Networking Technology: CISCO Certificate C25340C
- B Networking Technology: Internet Administration C25340D
- B Networking Technology: Linux/Red Hat Administration C25340F
- B Networking Technology: MCSA C25340G
- B\* Networking Technology: MCSE C25340A
- B Networking Technology: Network Security Administration C25340H
- B Networking Technology: Novell Administration C25340B
- B Networking Technology: SQL Server Administration C25340E

### Engineering Technology

- B Architectural Technology: Architectural CAD C40100A
- D Automation/Robotics Technology:
  - Industrial Controls C40120A
- B Computer Engineering Technology:
  - C Language Programming C40160B
- B Computer Engineering Technology: Personal Computer Specialist C40160C

- B Computer Engineering Technology: UNIX System Management and Programming C40160A
- B Electronics Engineering Technology:
  - Basic Electronics C40200A
- B Industrial Engineering Technology: Industrial Management C40240A
- D Manufacturing Technology/Plastics: Plastics Extrusion C5032AC
- D Manufacturing Technology/Plastics: Plastics Injection Molding C5032AF
- D Manufacturing Technology/Plastics: Manufacturing Practices C5032AG
- D Manufacturing Technology/Plastics: Plastics Materials C5032AH
- B Telecommunications and Network Engineering Technology: Basic Telecommunications Electronics C40400A
- B Telecommunications and Network Engineering Technology: Data Networking Technology C40400B
- B Telecommunications and Network Engineering Technology: Telecommunications Switching C40400C

### Health Sciences

- D Computed Tomography Technology C45200A
- B Human Service Technology/Substance Abuse C4538EA
- D Magnetic Resonance Imaging Technology C45200B
- B Nursing Assistant C45480
- D Phlebotomy C45600

### Vocational Technology

- B Air Conditioning, Heating, and Refrigeration C35100B
- B Basic Law Enforcement Training C55120
- B Electrical/Electronics Technology:
  - Commercial Wiring Methods C35220C
- B Electrical/Electronics Technology:
  - Residential Wiring Methods C35220B
- B Heavy Equipment and Transport Technology: Fuel Injection, Electrical, and Electronics C6024BC
- B Heavy Equipment and Transport Technology: Hydraulics, Engines, and Transmissions C6024BB
- B Industrial Systems Technology C50240B
- B Machining Technology C50300B
- B Machining Technology: CNC Machining C50300C
- B Machining Technology/Tool, Die, and Mold Making: Mold Making C5030AA
- B Mechanical Drafting Technology C50340B
- D Plumbing Applications and Diagrams C35300A
- D Plumbing: Modern Plumbing Codes and Blueprint Reading C35300B
- B Welding Technology C50420B

## Other Programs

### Cooperative Agreement Programs

A Cooperative Agreement program is one in which a student is concurrently enrolled in high school **and** Wake Tech.

- D Concurrent (Dual) Enrollment T90980
- D Huskins Bill T90970

### Transitional Programs

Transitional programs are designed to allow students to move from one stage of development to another.

- B Associate in General Education (undecided) A10300ZU
- D English as a Foreign Language (EFL) A10300ZQ



## **COLLEGE COMMITTEES**

### **Executive Council**

President, Chairman  
Vice Presidents  
Administrative Employees who report to the President  
Staff Council President  
Faculty Association President

### **Curriculum Education Services Council**

Vice President of Curriculum Education Services, Chairman  
Curriculum Education Deans  
Dean of Evening Programs

### **Continuing Education Services Council**

Vice President of Continuing Education Services, Chairman  
Continuing Education Deans  
Continuing Education Directors, Coordinators, and Instructional Supervisors are invited and encouraged to attend meetings.

### **Planning Council**

President, Chairman  
Executive Council  
Faculty Association Representatives  
Staff Council Representative  
Basic Skills Representatives

### **Staff Council**

Staff Council President  
One representative for every 10 eligible staff employees in a given service area

### **Drug and Substance Abuse Council**

Department of Criminal Justice faculty member, Chairman  
Human Resources Manager  
Dean of Students  
Manager of Security  
One Counselor  
One representative from Continuing Education Division  
One faculty member from each Curriculum Division

### **Curriculum Committee**

Vice President of Curriculum Education Services, Chairman  
Curriculum Education Deans  
The Registrar  
Director of Cooperative Education

### **Educational Support Services Advisory Committee**

Dean, Educational Support Services, Chairman  
Director of Library Services  
Health Sciences Librarian  
Head of Individualized Learning Center  
Head of English as a Foreign Language  
Director of Audiovisual  
One Representative from Continuing Education  
One Representative from Howell Library  
One full-time student appointed by the Student Government Association President  
Six full-time faculty members--one representing each academic division

### **Health, Safety, and Security Committee**

Manager of Security, Chairman  
Facilities Manager  
Dean of Students  
Dean of Evening Programs  
Business Manager  
One student recommended by the Student Government Association  
Two instructors from the Main Campus  
One instructor from the Health Education Campus  
One Representative recommended by the Continuing Education Services Council

### **Institutional Effectiveness (IE) Advisory Committee**

Dean of IE, Grants Development and Special Projects, Chairman  
Curriculum Education Services SGA President  
Continuing Education  
Student Services  
Administrative Services  
Adult Education Center Campus  
Health Science Campus Representative  
Faculty Association President  
Staff Council Member

### **Instructional Computer Services Advisory Committee**

Vice President of Computer Services, Chairman  
Vice President of Curriculum Education Services  
Vice President of Continuing Education Services  
Dean of Computer Information Systems  
Dean of Engineering Technology

### **Faculty Association**

One faculty member serves as President, Vice President, Secretary

The Faculty Association is open to all Wake Technical Community College full-time faculty

# WAKE TECHNICAL COMMUNITY COLLEGE

## FUNDING GROWTH LAST 10 YEARS

### Educational and General Expenditures by source of Funds

---

Year	State	%	County	%	Other	%	Total
1994-95	18,414,785	73	5,087,554	20	1,665,442	7	25,167,781
1995-96	18,986,857	73	4,909,382	19	2,011,909	8	25,907,329
1996-97	19,817,427	71	5,886,100	21	2,128,826	8	27,832,353
1997-98	21,128,693	71	6,435,000	21	2,333,350	8	29,987,043
1998-99	23,827,482	72	6,800,000	20	2,594,776	8	33,222,258
1999-00	27,968,018	72	7,202,000	19	3,383,705	9	38,553,723
2000-01	31,730,476	74	7,810,000	18	3,496,031	8	43,036,507
2001-02	34,335,261	72.4	8,495,000	17.9	4,618,009	9.7	47,448,270
2002-03	36,584,315	70.0	8,495,000	16.2	7,202,299	13.8	52,281,614

Office of Research (Does not include Capital and Construction Budgets)

MARCH 2003

Source: Wake Technical Community College Controller's Office Current Operating Budget

**SERVICE AREA:  
WAKE COUNTY**

## SOCIOECONOMIC AND DEMOGRAPHIC INDICATORS FOR WAKE COUNTY

<b>LAND AREA IN SQUARE MILES</b>	833.98
<b>Density (Persons per square mile)</b>	789.57

### PERSONS (July 2001)

Total County Population	658,490	
Total Incorporated Population	481,837	73.17%
Total Unincorporated Population	176,653	26.83%
18 and Over	473,917	

---

### MUNICIPAL POPULATION, JULY 2001

<b>Municipality</b>	<b>2000 Census</b>	<b>July 2001</b>
APEX	20,212	21,947
CARY	94,536	100,219
FUQUAY VARINA	7,898	8,399
GARNER	17,757	18,777
HOLLY SPRINGS	9,192	9,887
KNIGHTDALE	5,958	6,278
MORRISVILLE	5,208	5,546
RALEIGH	276,093	288,131
ROLESVILLE	907	953
WAKE FOREST	12,588	13,057
WENDELL	4,247	4,450
ZEBULON	4,046	4,218

OFFICE OF RESEARCH/SOURCE: N.C. OFFICE OF STATE BUDGET, AND MANAGEMENT/SEPTEMBER 2002  
[www.osbm.state.nc.us](http://www.osbm.state.nc.us)

# **STUDENTS**

# WAKE TECHNICAL COMMUNITY COLLEGE

## UNDUPLICATED HEADCOUNT

### LAST 10 YEARS

---

Year	Continuing Education	Curriculum	Total
1991-1992	26,421	11,805	38,226
1992-1993	11,759	39,832	28,073
1993-1994	30,129	11,796	41,925
1994-1995	32,315	12,228	44,543
1995-1996	31,948	11,988	43,936
1996-1997	32,606	11,622	44,228
1997-1998*	33,165	10,905	44,070
1998-1999	38,432	12,083	50,515
1999-2000	35,808	13,343	49,151
2000-2001	34,154	14,214	48,368
2001-2002	34,621	14,634	49,255

\* 1997-1998 Semester system began

MARCH 2003

SOURCE: ANNUAL STATISTICAL REPORTS, 2002 FACT BOOK, SYSTEM ANNUAL REPORTS, NCCCS



# WAKE TECHNICAL COMMUNITY COLLEGE

## AVERAGE ANNUAL FULL TIME EQUIVALENT (FTE)

Academic Years	FTE
1992-1993	5,884
1993-1994	5,732
1994-1995	5,809
1995-1996	5,908
1996-1997	5,668
1997-1998	6,848
1998-1999	7,745
1999-2000	8,292
2000-2001	8,550
2001-2002	9,150

## AVERAGE COST PER FTE ANALYSIS YEAR ENDING JUNE 30, 2002

	Wake Tech	System
Instruction-Curriculum	2,611.21	2,622.77
Instruction Non-Curriculum	2,840.80	2,550.32
Student Support	296.17	300.50
Plant Operation & Maintenance	0	107.86
Academic Support	494.37	437.92
Institutional Support	365.19	682.84

SOURCE: (AVERAGE COST PER FTE ANALYSIS) NCCCS FACT BOOK 2003

# **WAKE TECHNICAL COMMUNITY COLLEGE**

## **CURRICULUM FTE LAST 5 YEARS**

---

<b>Year</b>	<b>Fall</b>	<b>Spring</b>	<b>Summer</b>
1997-1998	2,541	2,432	844
1998-1999	2,830	2,716	844
1999-2000	3,029	2,903	875
2000-2001	3,281	3,382	1,193
2001-2002	3,579	3,382	1,193

MARCH 2003  
SOURCE: WAKE TECHNICAL COMMUNITY COLLEGE REGISTRAR

# WAKE TECHNICAL COMMUNITY COLLEGE

## STUDENT FINANCIAL AID

### 2001-2002

GRANTS, GIFT AWARDS SCHOLARSHIP	NUMBER OF STUDENTS	TOTAL DOLLARS	AVERAGE PER RECIPIENT
FSEOG	42	31,920	760
PELL GRANT TOTAL	1,948	3,738,891	1,919
<b>EMPLOYMENT</b>			
FWS	67	90,752	1,354
VOCATIONAL REHABILITATION	133	77,433	582
VETERANS ADMINISTRATION	55	23,785	432
JOB TRIANING PARTNERSHIP WIA, NAFFA	145	102,782	709
<b>EXTERNAL SOURCES OF AID</b>			
LOANS (STAFFORD)			
SUBSIDIZED	391	755,078	1,931
UNSUBSIDIZED	421	1,030,948	2,449
FPLUS	16	41,682	2,605
NCNESLP	32	38,123	1,191
NCHSM	4	8,923	2,231
NCSIG	19	8,750	460
NCCC GRANT	288	172,476	599
<b>TOTAL</b>	<b>3,561</b>	<b>6,121,553</b>	<b>1,719</b>

Abbreviations used in this report are:

FWS – College Work Study                      FSEOG – Federal Supplemental Education Opportunity Grant  
 HPEAA – Health Professions Education Assistance Act      HSM – Health, Science & Mathematics Student Loan Program  
 JTPA – Job Training Partnership Act                      NCCC - North Carolina Community College  
 NCLTG – North Carolina Legislative Tuition Grants                      NCSIG – North Carolina Student Incentive Grants  
 NESLP – Nurse Education Scholarship Loan Program                      NSP – Nurse Scholars Program  
 NTA – Nurse Training Act                      SCSF – State Contractural Scholarship Fund  
 SOURCE: NCHEA A-10

**WAKE TECHNICAL COMMUNITY COLLEGE  
NUMBER OF GRADUATES PER YEAR LAST 5 YEARS  
CUMULATIVE TOTAL**

---

YEAR	DEGREE	DIPLOMA	CERTIFICATE	TOTAL
1997-98	440	80	195	715
1998-99	536	69	322	927
1999-00	561	90	495	1,146
2000-2001	595	95	524	1,214
2001-2002	709	107	432	1,248

OFFICE OF RESEARCH  
MARCH 2003  
SOURCE: WAKE TECHNICAL COMMUNITY COLLEGE REGISTRAR

# **WAKE TECHNICAL COMMUNITY COLLEGE**

## **ADULT HIGH SCHOOL GRADUATES LAST 5 YEARS**

---

<b>YEAR</b>	<b>NUMBER GRADUATES</b>
1997-1998	51
1998-1999	42
1999-2000	66
2000-2001	71
2001-2002	59

---

## **GED GRADUATES LAST 5 YEARS**

<b>YEAR</b>	<b>NUMBER GRADUATES</b>
1997-1998	646
1998-1999	587
1999-2000	642
2000-2001	734
2001-2002	731

OFFICE OF RESEARCH  
MARCH 2003  
SOURCE: LEIS REPORT

# WAKE TECHNICAL COMMUNITY COLLEGE

## PASSING RATES FOR LICENSURE EXAMS

### 2001-2002

---

CURRICULUM	NUMBER TESTED	PERCENT PASSED
Nursing	49	100%
BLET	51	86%
Dental Assisting	21	95.2%
Medical Laboratory Technology		
American Society for Clinical Pathology	4	100%
National Cert. Agency for Laboratory Personnel	4	100%
Phlebotomy		
American Society for Clinical Pathology	7	100%
National Certification Agency for Phlebotomy	4	100%
Medical Assisting	4	85%
Emergency Medical Technician (EMT)	192	85.5%
EMT		
EMT-D		
EMT-1		
EMT-P		
EMD		
Real Estate (7/01/2001 - 06/30/2002)	48	69%
Radiography	17	100%
Nursing Assisting	68	100%

OFFICE OF RESEARCH  
MARCH 2003  
SOURCE: NCCCS Critical Success Factors 2003

## GRADUATES BY CURRICULUM

### **ARTS AND SCIENCES**

### **GRADUATES 2001-2002**

A10100	<b>Associate in Arts Degree</b> (for transfer to university liberal arts programs)	182
A10400	<b>Associate in Science Degree</b> (for transfer to university science and engineering programs)	53
A10300	<b>Associate in General Education Degree</b>	10

### **BUSINESS EDUCATION**

#### **Associate in Applied Science Degree:**

A25100	Accounting	17
A25120	Business Administration	20
A2512C	Business Administration/Human Resources Management	7
A55180	Criminal Justice Technology	21
A55200	Culinary Technology	9
A55240	Early Childhood Associate	22
A25240	Hotel and Restaurant Management	10
A25360	Office Systems Technology	5
A2536A	Office Systems Technology/Legal	0
A25310	Medical Office Administration	4

#### **Diploma:**

D55220A	Early Childhood Associate	12
D25360A	Office Systems Technology	5

#### **Certificate:**

C25120A	Business Administration: Sales Development	2
C2512CA	Business Administration: Human Resources Management	6
C55220B	Early Childhood Associate	121
C25360B	Office Systems Technology: Word Processing	1
C25400A	Real Estate	0
C25420	Real Estate Appraisal	0

### **ENGINEERING TECHNOLOGY**

#### **Associate in Applied Science Degree:**

A40100	Architectural Technology	11
A40120	Automation/Robotics Technology	5
A40140	Civil Engineering Technology	7
A40160	Computer Engineering Technology	7
A40200	Electronics Engineering Technology	5
A4020A	Electronics Engineering Technology/Instrumentation	0
A20140	Environmental Science Technology	7
A40240	Industrial Engineering Technology	3
A20180	Industrial Pharmaceutical Technology	10

**GRADUATES 2000-2001**

A40260	Landscape Architecture Technology	4
A40300	Manufacturing Engineering Technology	2
A5032A	Manufacturing Technology/Plastics	0
A40320	Mechanical Engineering Technology	15
A40360	Scientific Graphics Technology	2
A40380	Surveying Technology	7
A40400	Telecommunications and Network Engineering Technology	3

**Certificate:**

C40100A	Architectural Technology: Architectural CAD	11
C40120A	Automation/Robotics Technology: Industrial Controls	3
C40160B	Computer Engineering Technology: C Language Programming	3
C40160C	Computer Engineering Technology: Personal Computer Specialist	3
C40160A	Computer Engineering Technology: UNIX System Management and Programming	7
C40240A	Industrial Engineering Technology: Industrial Management	0

**COMPUTER INFORMATION SYSTEMS****Associate in Applied Science Degree:**

A25260	Information Systems	38
A2526B	Information Systems: Helpdesk and Support Technology	2
A25130	Computer Programming	27
A25340	Networking Technology	57

**Certificate:**

C25260A	Information Systems: Applications	2
C25260F	Information Systems: Database Management	9
C25260C	Information Systems: Desktop Publishing	13
C25260G	Information Systems: Hardware Troubleshooting/Repair	7
C25260D	Information Systems: Networking	5
C25260E	Information Systems: Spreadsheet Management	3
C25260B	Information Systems: Technical Word Processing	0
C25130C	Information Systems/Programming: C++ Programming	5
C25130D	Information Systems/Programming: Oracle Programming	6
C25130A	Information Systems/Programming: Internet Programming	10
C25130B	Information Systems/Programming: Visual Basic Programming	14

**HEALTH SCIENCES****Associate in Applied Science Degree:**

A45340	Emergency Medical Science	14
A45380	Human Services Technology	8
A4538A	Human Services Technology/Developmental Disabilities	2
A4538E	Human Services Technology/Substance Abuse	3
A45420	Medical Laboratory Technology	4
A45120	Nursing	49
A45700	Radiography	17



**GRADUATES 2000-2001****Diploma:**

D45240	Dental Assisting	21
D45400	Medical Assisting	12

**Certificate:**

C45480	Nursing Assistant	10
C45600	Phlebotomy	11

**VOCATIONAL TECHNOLOGY****Associate in Applied Science Degree:**

A35220	Electrical/Electronics Technology	5
A50120	Electronic Servicing Technology	4
A6024B	Heavy Equipment and Transport Technology/Construction Equipment Systems	2
A50240	Industrial Maintenance Technology	4
A50300	Machining Technology	2
A5030A	Machining Technology/Tool, Die and Mold Making	1
A50340	Mechanical Drafting Technology	4

**Diploma:**

D35100A	Air Conditioning, Heating and Refrigeration Technology	10
D60160A	Automotive Systems Technology	16
D35220A	Electrical/Electronics Technology	1
D50120A	Electronic Servicing Technology	1
D6024BA	Heavy Equipment and Transport Technology/Construction Equipment Systems	1
D50240A	Industrial Maintenance Technology	3
D50300A	Machining Technology	1
D50340A	Mechanical Drafting Technology	0
D35300	Plumbing	2
D50420A	Welding Technology	2

**Certificate:**

C35100B	Air Conditioning, Heating and Refrigeration Technology	16
C55120	Basic Law Enforcement Training	49
C35220C	Electrical/Electronics Technology: Commercial Wiring Methods	5
C35220B	Electrical/Electronics Technology: Residential Wiring Methods	10
C6024BB	Heavy Equipment and Transport Technology/Construction Equipment Systems: Hydraulics, Engines and Transmissions	0
C6024BC	Heavy Equipment and Transport Technology/Construction Equipment Systems: Fuel Injection, Electrical and Electronics	1
C50300B	Machining Technology	1
C5030AA	Machining Technology/Tool, Die and Mold Making: Mold Making	0
C50340B	Mechanical Drafting Technology	1
C35300B	Plumbing: Modern Plumbing, Codes and Blueprint Reading	0
C35300A	Plumbing: Plumbing Applications and Diagrams	0
C50420B	Welding Technology	4

## 2002 Average Starting Salaries

<b>Business Education Division</b>	<b>Average Starting</b>	<b>Range</b>	<b>#Returns</b>
Accounting	\$ 24,500	22,000-30,000	4
Business Administration	27,000	15,000-29,000	2
Hotel/Restaurant Management	15,500	15,000-16,000	1
Early Childhood Associate	19,333	15,000-37,000	5
Office Systems Technology	28,000	27,000-29,000	1
<b>Computer&amp; Information Technology Division</b>			
Information Systems Technology	33,000	25,000-45,000	3
Computer Programming	47,000	47,000	1
Networking Technologies	32,000	25,000-47,000	5
Internet Technologies	24,000	23,000-25,000	1
<b>Engineering Technology Division</b>			
Architectural Technology	24,000	23,000-25,000	2
Automation/Robotics Technology	28,000	27,000-29,000	1
Civil Engineering Technology	36,000	35,000-37,000	1
Computer Engineering Technology	36,000	35,000-37,000	1
Electronics Engineering Technology	38,500	29,000-47,000	2
Environmental Science Technology	30,000	29,000-31,000	2
Surveying Technology	31,333	31,000-39,000	3
Telecom & Networking Engineering Technology	42,000	41,000-43,000	1
Industrial Pharmaceutical Technology	26,000	25,000-27,000	2
Landscape Engineering Technology	22,000	21,000-23,000	1
Manufacturing Engineering Technology	38,000	37,000-39,000	1
<b>Health Sciences Division</b>			
Medical Laboratory	30,000	29,000-31,000	1
Nursing	35,250	30,000-47,000	24
Radiologic Technology	31,420	23,000-39,000	14
Emergency Medical Science	30,000	29,000-31,000	2
Human Services Technology	22,500	15,000-27,000	6
Magnetic Resouce Imaging	31,000	21,000-41,000	2
Medical Assisting	22,500	15,000-27,000	6
Dental Assistant	24,850	21,000-31,000	7
Nursing Assistant	20,000	19,000-21,000	1
<b>Vocational Education Division</b>			
Mechanical Drafting Technology	25,000	21,000-29,000	2
HVAC	28,660	23,000-35,000	3
Plumbing	16,000	15,000-17,000	1
Electrical/Electronics	31,000	27,000-35,000	2
Electronic Servicing	18,000	17,000-19,000	1
Welding	30,000	29,000-31,000	1
BLET	31,730	21,000-47,000	19

Curriculums not represented had 0% return for salary information.

Unrelated and part-time are not calculated in ranges and averages.

Figures taken from 2002 Graduate Placement Survey - check with Placement Office if questions - 662-3376.

PERCENT OF 1999-00 COLLEGE TRANSFER STUDENTS WITH A  
GPA OF > = 2.0 AFTER TWO SEMESTERS AT A UNC INSTITUTION

COLLEGE	TOTAL FTE	24 OR MORE SEMESTER HOURS		ASSOCIATE DEGREE RECIPIENT		TOTAL	
		NUMBER	PERCENT>=2.0	NUMBER	PERCENT>=2.0	NUMBER	PERCENT >=2.0
Alamance CC	3,172	**	**	**	**	**	**
Asheville-Buncombe TCC	4,995	46	100.0%	15	86.7%	61	96.7%
Beaufort County CC	1,817	**	**	**	**	12	91.7%
Bladen CC	1,253	**	**	**	**	**	**
Blue Ridge CC	2,123	17	76.5%	**	**	26	84.6%
Brunswick CC	1,182	12	75.0%	**	**	20	80.0%
Caldwell CC & TI	3,410	60	80.0%	19	84.2%	79	81.0%
Cape Fear CC	5,756	148	78.4%	109	79.8%	257	79.0%
Carteret CC	1,684	**	**	**	**	10	80.0%
Catawba Valley CC	3,726	28	75.0%	**	**	36	77.8%
Central Carolina CC	4,807	23	78.3%	13	92.3%	36	83.4%
Central Piedmont CC	11,775	28	82.1%	74	78.4%	102	79.4%
Cleveland CC	2,419	**	**	**	**	14	78.6%
Coastal Carolina CC	3,918	45	84.4%	41	82.9%	86	83.7%
College of The Albemarle	2,143	15	86.7%	33	93.9%	48	91.7%
Craven CC	2,243	31	90.3%	30	93.3%	61	91.8%
Davidson County CC*	2,906	34	94.1%	16	93.8%	50	94.0%
Durham TCC	4,005	54	75.9%	27	85.2%	81	79.0%
Edgecombe CC*	2,208	**	85.7%	**	83.3%	13	84.6%
Fayetteville TCC	9,004	47	93.6%	25	88.0%	72	91.7%
Forsyth TCC	5,653	58	67.2%	18	77.8%	76	69.7%
Gaston College*	4,093	73	79.5%	35	74.3%	108	77.8%
Guilford TCC	7,645	20	80.0%	27	96.3%	47	89.4%
Halifax CC*	1,784	14	50.0%	**	100.0%	20	65.0%
Haywood CC	1,675	**	**	14	92.9%	19	89.5%
Isothermal CC	1,895	14	64.3%	14	92.9%	28	78.6%
James Sprunt CC	1,360	**	**	**	**	12	75.0%
Johnston CC	3,084	31	74.2%	13	92.3%	44	79.5%
Lenoir CC	2,847	39	82.1%	22	86.4%	61	83.7%
Martin CC	1,074	**	**	**	**	**	**
Mayland CC	1,488	**	**	**	**	**	**
McDowell TCC	1,339	**	**	**	**	**	**
Mitchell CC	1,986	14	78.6%	16	81.3%	30	80.0%
Montgomery CC	726	**	**	**	**	**	**
Nash CC*	2,470	28	89.3%	**	**	36	86.1%
Pamlico CC	518	**	**	**	**		
Piedmont CC	1,922	**	**	**	**	**	**
Pitt CC	4,854	58	67.2%	27	77.8%	85	70.6%
Randolph CC	2,108	11	90.9%	12	83.3%	23	86.9%
Richmond CC	1,957	**	**	**	**	14	71.5%
Roanoke-Chowan CC	930	**	**	**	**		
Robeson CC	3,228	12	83.3%	**	**	15	86.6%
Rockingham CC	1,991	20	75.0%	20	85.0%	40	80.0%
Rowan-Cabarrus CC	4,082	20	90.0%	15	86.7%	35	88.6%
Sampson CC	1,599	**	**	**	**	16	81.3%
Sandhills CC*	3,480	66	74.2%	24	66.7%	90	72.2%
South Piedmont	1,902	**	**	**	**	**	**
Southeastern CC	2,292	19	63.2%	17	94.1%	36	77.8%
Southwestern CC	2,012	21	76.2%	13	76.9%	34	76.5%
Stanly CC	1,750	**	**	**	**	13	69.2%
Surry CC*	3,380	56	82.1%	95	90.5%	151	87.4%
Tri-County CC	1,249	16	87.5%	**	**	24	91.7%
Vance-Granville CC	4,090	16	87.5%	13	92.3%	29	89.7%
Wake TCC	9,150	188	85.1%	47	87.2%	235	85.5%
Wayne CC*	3,323	108	77.8%	76	89.5%	184	82.6%
Western Piedmont CC	2,694	29	72.4%	18	77.8%	47	74.5%
Wilkes CC	2,712	21	81.0%	20	85.0%	41	83.0%
Wilson TCC	1,855	**	**	**	**	11	87.4%
System Totals	176,743	1,581	79.6%	1,016	84.0%	2,597	81.3%

\*Includes data collected from private colleges and universities.

\*\*Number too small to report without violating students'privacy.

# **CONTINUING EDUCATION**

## WAKE TECHNICAL COMMUNITY COLLEGE

### FULL-TIME EQUIVALENCY (FTE) DEFINITIONS

CURRICULUM FTE: Includes College Transfer, General Education, Technical, and Vocational Education.

EXTENSION FTE: Includes Academic, Adult High School, Avocational, Occupational, Practical Skills, ABE, Compensatory Education, Learning Lab (ILC), New and Expanding Industry, Human Resource Development, and Self-Supporting.

BASIC SKILLS (LITERACY) FTE - Includes Adult High School, ABE, and Compensatory Education

HUMAN RESOURCES DEVELOPMENT FTE - Includes Human Resources

SMALL BUSINESS CENTER FTE - Includes New and Expanding Industry, and Self-Supporting.

REGULAR BUDGET EXTENSION - Includes Adult High School, Occupational, Adult Basic Education, and Compensatory Education.

NON-REGULAR BUDGET EXTENSION - Includes Learning Laboratory, New and Expanding Industry, Human Resource Development, And Self-Supporting.

COMMUNITY SERVICE - Includes Academic, Avocational, Practical Skills, and Cultural and Civic Activities.

OCCUPATIONAL - Includes Occupational only. Occupational Extension Programs consist of single courses, complete in themselves, designed for the specific purposes of training an individual for employment, upgrading skills of persons presently employed, and retraining others for new employment in occupational fields.

SELF-SUPPORTING - Includes courses which the College may provide at the request of the community but for which the College receives no budgetary credit. The cost of such activities are borne exclusively by the participants or some contracting agency.

SPECIAL NOTE: Wake Tech and the North Carolina Community College System changed from the Quarter System to the Semester System beginning with Fall Semester 1997. The Summer of 1997 was a period of transition. Therefore, enrollment and FTE numbers for the Summer of 1997 were diminished.

When comparing annual enrollment and FTE figures for the Quarter System with the Semester System, you must remember to average the Quarter System numbers and sum the Semester System numbers.

Main Campus = 401 South Campus

AEC = Adult Education Center (News & Observer)

HSC = Health Sciences Campus

SPDC = State Personnel Development Center

Office of Research



Adult Basic Skills Program Enrollments by Type, 2001-2002

INSTITUTION	1990 TARGET POP.	LEIS UNDUPLICATED HEADCOUNT						% OF POP. SERVED
		ABE	AHS	ESL	GED	HSG	TOTAL	
Alamance CC	25,269	1,164	217	1,118	463	66	3,028	11.98%
Asheville-Buncombe TCC	38,873	2,422	43	1,272	629	208	4,574	11.77%
Beaufort County CC	14,670	869	*	462	158	0	1,489	10.15%
Bladen CC	8,654	625	73	130	74	31	933	10.78%
Blue Ridge CC	18,350	794	137	613	395	0	1,939	10.57%
Brunswick CC	11,582	367	147	96	294	0	904	7.81%
Caldwell CC & TI	28,772	1,896	210	470	586	9	3,171	11.02%
Cape Fear CC	26,376	1,453	503	1,147	287	1	3,391	12.86%
Carteret CC	9,618	518	147	166	229	2	1,062	11.04%
Catawba Valley CC	37,155	1,838	*	1,618	463	40	3,959	10.66%
Central Carolina CC	33,532	1,702	386	2,078	844	0	5,010	14.94%
Central Piedmont CC	69,835	3,947	997	4,689	1,842	0	11,475	16.43%
Cleveland CC	22,089	640	186	93	44	1	964	4.36%
Coastal Carolina CC	15,045	3,569	222	275	669	1,842	6,577	43.72%
College of The Albemarle	23,648	1,461	286	393	552	133	2,825	11.95%
Craven CC	13,372	764	136	221	320	24	1,465	10.96%
Davidson County CC	39,621	1,825	379	550	336	222	3,312	8.36%
Durham TCC	37,648	1,097	317	2,254	430	0	4,098	10.89%
Edgecombe CC	16,212	769	165	127	1,118	32	2,211	13.64%
Fayetteville TCC	34,431	3,722	296	829	515	1,153	6,515	18.92%
Forsyth TCC	53,218	2,724	187	2,588	620	2	6,121	11.50%
Gaston College	63,143	2,039	212	629	818	12	3,710	5.88%
Guilford TCC	60,326	2,209	263	2,587	651	35	5,745	9.52%
Halifax CC	23,882	1,203	*	10	238	0	1,451	6.08%
Haywood CC	11,463	571	9	131	219	60	990	8.64%
Isothermal CC	20,498	1,087	242	343	249	28	1,949	9.51%
James Sprunt CC	12,239	503	40	116	229	1	889	7.26%
Johnston CC	20,801	782	222	453	234	1	1,692	8.13%
Lenoir CC	22,346	1,831	67	450	237	7	2,592	11.60%
Martin CC	12,346	820	44	70	60	6	1,000	8.10%
Mayland CC	13,255	773	*	124	230	75	1,202	9.07%
McDowell TCC	10,818	531	*	179	190	2	902	8.34%
Mitchell CC	23,014	1,275	*	630	466	68	2,439	10.60%
Montgomery CC	7,445	326	19	201	102	0	648	8.70%
Nash CC	19,155	1,233	119	319	202	56	1,929	10.07%
Pamlico CC	2,861	307	*	17	81	1	406	14.19%
Piedmont CC	15,027	1,144	*	154	208	75	1,581	10.52%
Pitt CC	19,804	1,581	102	363	538	26	2,610	13.18%
Randolph CC	29,749	1,093	153	746	122	78	2,192	7.37%
Richmond CC	21,587	1,690	282	277	734	139	3,122	14.46%
Roanoke-Chowan CC	12,873	670	*	38	37	0	745	5.79%
Robeson CC	29,797	2,244	397	388	79	1	3,109	10.43%
Rockingham CC	25,574	1,023	*	179	324	67	1,593	6.23%
Rowan-Cabarrus CC	50,922	1,220	66	1,523	537	4	3,350	6.58%
Sampson CC	12,725	861	*	281	62	0	1,204	9.46%
Sandhills CC	18,119	1,533	60	376	444	58	2,471	13.64%
Southeastern CC	15,732	1,359	104	187	147	23	1,820	11.57%
South Piedmont CC	13,992	1,413	183	765	324	51	2,736	19.55%
Southwestern CC	15,080	1,339	55	194	185	5	1,778	11.79%
Stanly CC	23,135	468	331	173	325	75	1,372	5.93%
Surry CC	28,521	1,077	*	723	586	35	2,421	8.49%
Tri-County CC	10,165	459	*	64	108	0	631	6.21%
Vance-Granville CC	35,236	2,008	143	269	569	0	2,989	8.48%
Wake TCC	45,581	3,626	122	4,902	787	77	9,514	20.87%
Wayne CC	20,911	2,010	323	393	602	55	3,383	16.18%
Western Piedmont CC	22,709	1,899	119	352	865	12	3,247	14.30%
Wilkes CC	30,935	1,466	316	409	133	179	2,503	8.09%
Wilson TCC	17,230	1,072	121	399	117	11	1,720	9.98%
<b>System Totals</b>	<b>1,416,966</b>	<b>80,911</b>	<b>9,148</b>	<b>40,603</b>	<b>22,907</b>	<b>5,089</b>	<b>158,658</b>	<b>11.20%</b>

\* College does not offer AHSD program.

Source: Literacy, DW, Planning and Research, NCCCS - 4/03.



PROGRESS OF BASIC SKILLS STUDENTS, 2001-2002

COLLEGE	TOTAL FTE	TOTAL SERVED IN LITERACY	COMPLETED A LEVEL	PROGRESSING SAME LEVEL	EXIT NON-COMPLETERS	MOVED TO A HIGHER LEVEL	COMPOSITE PROGRESS MEASURE
Alamance CC	3,172	3,020	13%	60%	12%	15%	88%
Asheville-Buncombe TCC	4,995	4,564	10%	48%	22%	20%	78%
Beaufort County CC	1,817	1,465	5%	55%	23%	17%	77%
Bladen CC	1,253	933	12%	56%	16%	16%	84%
Blue Ridge CC	2,123	1,939	13%	44%	24%	19%	76%
Brunswick CC	1,182	904	11%	62%	10%	18%	90%
Caldwell CC & TI	3,410	2,625	18%	39%	25%	18%	75%
Cape Fear CC	5,756	3,372	7%	49%	23%	21%	77%
Carteret CC	1,684	1,026	19%	46%	18%	17%	82%
Catawba Valley CC	3,726	3,957	12%	60%	18%	11%	82%
Central Carolina CC	4,807	4,994	15%	42%	28%	15%	72%
Central Piedmont CC	11,775	11,271	12%	49%	23%	16%	77%
Cleveland CC	2,419	964	17%	37%	32%	14%	68%
Coastal Carolina CC	3,918	6,573	7%	62%	20%	11%	80%
College of The Albemarle	2,143	2,824	15%	56%	20%	10%	80%
Craven CC	2,243	1,464	12%	56%	24%	8%	76%
Davidson County CC	2,906	3,312	9%	47%	15%	30%	85%
Durham TCC	4,005	3,272	16%	44%	18%	21%	82%
Edgecombe CC	2,208	2,182	19%	54%	15%	12%	85%
Fayetteville TCC	9,004	6,510	5%	57%	24%	14%	76%
Forsyth TCC	5,653	6,117	8%	44%	19%	28%	81%
Gaston College	4,093	3,626	16%	38%	28%	18%	72%
Guilford TCC	7,645	5,745	11%	59%	7%	23%	93%
Halifax CC	1,784	1,433	4%	71%	1%	23%	99%
Haywood CC	1,675	990	11%	45%	25%	19%	75%
Isothermal CC	1,895	1,949	8%	57%	16%	19%	84%
James Sprunt CC	1,360	889	10%	38%	21%	31%	79%
Johnston CC	3,084	1,465	11%	49%	27%	13%	73%
Lenoir CC	2,847	2,532	9%	54%	24%	13%	76%
Martin CC	1,074	1,000	14%	54%	17%	15%	83%
Mayland CC	1,488	1,201	16%	32%	18%	34%	82%
McDowell TCC	1,339	899	16%	34%	18%	32%	82%
Mitchell CC	1,986	2,438	10%	47%	25%	19%	75%
Montgomery CC	726	645	8%	50%	28%	14%	72%
Nash CC	2,470	1,929	9%	51%	24%	15%	76%
Pamlico CC	518	319	16%	15%	44%	25%	56%
Piedmont CC	1,922	1,579	10%	51%	24%	15%	76%
Pitt CC	4,854	2,586	8%	54%	24%	14%	76%
Randolph CC	2,108	2,192	5%	69%	10%	15%	90%
Richmond CC	1,957	3,122	6%	39%	19%	36%	81%
Roanoke-Chowan CC	930	725	15%	51%	27%	7%	73%
Robeson CC	3,228	1,456	12%	49%	16%	23%	84%
Rockingham CC	1,991	1,592	9%	41%	30%	21%	70%
Rowan-Cabarrus CC	4,082	3,276	13%	29%	38%	20%	62%
Sampson CC	1,599	1,170	10%	41%	25%	25%	75%
Sandhills CC	3,480	2,458	6%	49%	24%	21%	76%
South Piedmont CC	2,292	2,736	11%	37%	22%	29%	78%
Southeastern CC	1,902	1,812	13%	45%	24%	18%	76%
Southwestern CC	2,012	1,769	10%	47%	20%	23%	80%
Stanly CC	1,750	1,372	13%	48%	25%	13%	75%
Surry CC	3,380	2,421	11%	41%	25%	23%	75%
Tri-County CC	1,249	629	14%	48%	12%	26%	88%
Vance-Granville CC	4,090	2,986	14%	31%	19%	35%	81%
Wake TCC	9,150	9,503	5%	45%	35%	15%	65%
Wayne CC	3,323	3,383	19%	53%	7%	21%	93%
Western Piedmont CC	2,694	3,230	11%	47%	24%	18%	76%
Wilkes CC	2,712	2,499	6%	51%	25%	18%	75%
Wilson TCC	1,855	1,718	7%	52%	25%	17%	75%
<b>System Totals</b>	<b>176,743</b>	<b>154,562</b>	<b>11%</b>	<b>49%</b>	<b>22%</b>	<b>19%</b>	<b>78%</b>

# **WAKE TECHNICAL COMMUNITY COLLEGE**

**EXTENSION FTE (INCLUDES BASIC SKILLS, LEARNING LAB,  
OCCUPATIONAL EXTENSION, FOCUSED INDUSTRY TRAINING,  
HUMAN RESOURCES DEVELOPMENT, NEW & EXPANDING  
INDUSTRY, SMALL BUSINESS CENTER, JOB TRAINING  
PARTNER, & COMMUNITY SERVICE)**

<b>YEAR</b>	<b>FALL</b>	<b>SPRING</b>	<b>SUMMER</b>
1997-1998	844	775	594
1998-1999	815	870	592
1999-2000	864	763.7	608.6
2000-2001	816	815.1	513
2001-2002	861.2	862	563

HRD is not Self-Support

MARCH 2003

SOURCE: WAKE TECHNICAL COMMUNITY COLLEGE REGISTRAR



**WAKE TECHNICAL COMMUNITY COLLEGE**  
**BASIC SKILLS FTE (INCLUDES ADULT HIGH SCHOOL, ABE,**  
**COMPENSATORY EDUCATION)**  
**LAST 5 YEARS**

---

<b>YEAR</b>	<b>FALL</b>	<b>SPRING</b>	<b>SUMMER</b>
1997-1998	313	261	189
1998-1999	259.7	266	199
1999-2000	274	282	200
2000-2001	297	343.2	212
2001-2002	369.7	381.6	241

MARCH 2003  
SOURCE: WAKE TECHNICAL COMMUNITY COLLEGE REGISTRAR

**WAKE TECHNICAL COMMUNITY COLLEGE**  
**SELF-SUPPORTING FTE (INCLUDES: OCCUPATIONAL**  
**EXTENSION RECEIPT, FOCUSED INDUSTRY TRAINING, SMALL**  
**BUSINESS CENTER, JOB TRAINING PARTNERSHIP, LEARNING**  
**LAB, COMMUNITY SERVICE SELF-SUPPORTING)**  
**LAST 5 YEARS**

<b>YEAR</b>	<b>FALL</b>	<b>SPRING</b>	<b>SUMMER</b>
1997-1998	32	25	17
1998-1999	34.95	109	80
1999-2000	56	54.8	35.2
2000-2001	40	50.1	19.2
2001-2002	55	60.9	47.4

**NEW AND EXPANDING INDUSTRY FTE**  
**LAST 5 YEARS**

<b>YEAR</b>	<b>FALL</b>	<b>SPRING</b>	<b>SUMMER</b>
1997-1998	58	80	74
1998-1999	64.8	100	50
1999-2000	75.7	49.5	50.1
2000-2001	91	48.6	24.2
2001-2002	25.5	6.5	3

MARCH 2003  
 SOURCE: WAKE TECHNICAL COMMUNITY COLLEGE REGISTRAR

# WAKE TECHNICAL COMMUNITY COLLEGE CONTINUING EDUCATION SERVICES

## CORRECTIONS EDUCATION

Year	1997	1998	1999	2000	2001	2002
<b>Classes</b>	175	276	329	346	357	372
<b>Students</b>	2,505	3,209	4,086	3,942	4,344	4,036

## EVENING DIVISION (Non-Credit)

Year	1997	1998	1999	2000	2001	2002
<b>FTE</b>	481	504	620.39	437.15	405	443.7
<b>Students</b>	15,080	15,241	18,931	14,683	13,813	14,633

## FIRE SERVICES TRAINING

Year	1997	1998	1999	2000	2001	2002
<b>Classes</b>	429	448	475	504	540	551
<b>Students</b>	6,051	6,563	7,412	7,296	8,119	8,421

## LAW ENFORCEMENT TRAINING

Year	1997	1998	1999	2000	2001	2002
<b>Classes</b>	92	198	339	340	346	386
<b>Students</b>	1,377	4,322	5,109	4,579	4,681	6,372

## WORKPLACE BASIC SKILLS (ABE/GED, WORKPLACE SPECIFIC, AND ESL)

Year	1996-1997	1997-1998	1998-1999	2000	2001	2002
<b>Classes</b>	17	13	28	18	16	23
<b>Employers</b>	14	11	23	16	15	21
<b>Students</b>	237	260	760	477	387	483

SOURCE: WAKE TECHNICAL COMMUNITY COLLEGE CONTINUING EDUCATION

# **EMPLOYEES**

**WAKE TECHNICAL COMMUNITY COLLEGE**  
**FULL-TIME EMPLOYEES STATISTIC USING EEOC CLASSIFICATION**  
**DATA EFFECTIVE NOVEMBER 2002**

<b>FULL-TIME ANNUAL</b>	<b>MALES</b>	<b>%</b>	<b>FEMALES</b>	<b>%</b>	<b>TOTAL</b>
EXECUTIVE/MANAGERIAL	12	63.1	7	36.9	19
INSTRUCTIONAL/FACULTY	152	42.6	204	57.4	356
PROFESSIONAL (NON-FACULTY)	42	38.1	68	61.9	110
SECRETARIAL/CLERICAL	2	2.3	86	97.7	88
TECHNICAL/PARPROFESSIONAL	5	23.8	17	76.2	21
SKILLED CRAFTS	3	100	0	0	3
SERVICE/MAINTENANCE	9	81.8	2	18.2	11
<b>TOTAL</b>	<b>225</b>	<b>37.0</b>	<b>384</b>	<b>63.0</b>	<b>608</b>

OFFICE OF RESEARCH  
MARCH 2003  
SOURCE: WAKE TECHNICAL COMMUNITY COLLEGE ADMINISTRATIVE SERVICES

**WAKE TECHNICAL COMMUNITY COLLEGE**  
**PART-TIME EMPLOYEES USING EEOC CLASSIFICATION BY SEX**  
**DATA EFFECTIVE NOVEMBER 2002**

---

<b>EEOC CLASSIFICATION</b>	<b>MALES</b>	<b>FEMALES</b>	<b>TOTAL</b>
EXECUTIVE/MANAGERIAL	1	0	1
INSTRUCTIONAL/FACULTY	337	390	727
PROFESSIONAL (NON-FACULTY)	6	24	30
SECRETARIAL/CLERICAL	1	11	12
TECHNICAL/PARPROFESSIONAL	6	11	17
SKILLED CRAFTS	0	0	0
SERVICE/MAINTENANCE	0	0	0
<b>TOTAL</b>	<b>351</b>	<b>436</b>	<b>787</b>

OFFICE OF RESEARCH  
MARCH 2003  
SOURCE: WAKE TECHNICAL COMMUNITY COLLEGE ADMINISTRATIVE SERVICES

# **FACILITIES**

## WAKE TECHNICAL COMMUNITY COLLEGE PERMANENT FACILITIES

---

ACADEMIC YEAR	GROSS SQUARE FEET	LEASED
1991	404,110	
1992	404,110	
1993	404,110	22,260
1994	404,110	22,260
1995	404,110	22,260
1996	404,110	22,260
1997	509,779	22,260
1998	509,779	22,260
1999	509,779	22,260
2000	509,779	22,260
2001	509,779	22,260
2002	492,979	37,223

SOURCE: FACILITIES INVENTORY AND UTILIZATION STUDY, STATE OF NORTH CAROLINA, THE UNIVERSITY OF NORTH CAROLINA, THE UNIVERSITY OF NORTH CAROLINA COMMISSION ON HIGHER EDUCATION FACILITIES CHAPEL HILL, NORTH CAROLINA, DECEMBER 2002.



## **Facilities Inventory and Utilization Study 2001**

The primary purpose of this research document is to provide higher education administrators with a detailed statistical profile of the facilities of their own campuses and of other colleges and universities in North Carolina (Facilities Inventory and Utilization Study, 2000).

### **Capacity/Enrollment Ratio**

The capacity/enrollment ratio, often referred to as the C/E ratio, is the amount of instructional and library space on campus divided by the total fall term student clock hours of that institution. In analyzing and comparing the capacity/enrollment ratios, it should be kept in mind that a relatively low ratio generally indicates a high level of space utilization.

#### **Capacity/Enrollment Ratio (Table 1)**

	<b>2001</b>	<b>2000</b>	<b>1999</b>	<b>1998</b>	<b>1997</b>	<b>1996</b>
<b>Wake Tech CC</b>	2.28*	2.21	2.28	2.79	2.76	2.78
<b>Central Piedmont CC</b>	3.34	3.78	3.80	3.29	2.64	2.79
<b>Fayetteville CC</b>	3.24	3.49	3.14	3.04	2.66	2.87
<b>Guilford CC</b>	3.95	4.88	4.40	4.75	4.60	3.74
<b>System Average</b>	3.77	4.04	3.97	4.06	3.64	3.62

\* Lowest figure among the 58 NC Community Colleges in 2001

Facilities Inventory and Utilization Study 2001  
State of North Carolina Higher Education Comprehensive Planning Program  
The University of North Carolina Commission on Higher Education Facilities Chapel Hill,  
North Carolina, December 2002

### **Square Feet of Academic Facilities Per FTE Student**

The ratio of an institution's square footage of academic facilities to its full-time equivalent enrollment represents an important index of the instructional utilization of campus facilities. In this table, the FTE enrollments which are reported for the institutions of the Community College System include only credit enrollment generated in all inventoried space (on-campus only = Main Campus, Adult Education Center, and the Health Education Campus)

**Square Feet of Academic Facilities Per FTE Student (Table 2)**

	<b>2001</b>	<b>2000</b>	<b>1999</b>	<b>1998</b>	<b>1997</b>	<b>1996</b>
<b>Wake Tech CC</b>	52*	54	58	59	66	63
<b>Central Piedmont CC</b>	110	109	102	89	81	69
<b>Fayetteville CC</b>	89	91	85	85	83	68
<b>Guilford CC</b>	90	95	103	103	104	93
<b>System Average</b>	91	98	97	98	99	87

\* Wake Tech CC had the lowest figures for 2001.

Facilities Inventory and Utilization Study 2001

State of North Carolina Higher Education Comprehensive Planning Program

The University of North Carolina Commission on Higher Education Facilities Chapel Hill,  
North Carolina, December 2002

### **Average Weekly Room Hours of Instruction in Classroom**

Is the average number of hours that an institution's classrooms are used for instructional purposes each week.

For the purpose of this study, a classroom is defined as a room used to conduct classes that do not require special-purpose equipment for student use.

Daytime utilization is based on all classes with beginning times between and including 5:00 a.m. and 4:59 p.m.; nighttime utilization is based on all other classes. The "All Hours" section in Table 3 indicates the sum of the daytime and nighttime figures for the last five years.

**Average Weekly Room Hours of Instruction in Classrooms (Table 3)**

	<b>Daytime Hours</b>	<b>Nighttime Hours</b>	<b>2001</b>	<b>2000</b>	<b>1999</b>	<b>1998</b>	<b>1997</b>	<b>1996</b>
				<b>All Hours</b>				
<b>Wake Tech CC</b>	23.8	5.0	28.8*	29.2	30.0	27.0	24.4	26.0
<b>Central Piedmont CC</b>	16.7	6.1	22.8	21.2	20.9	22.8	22.2	26.5
<b>Fayetteville CC</b>	17.3	6.0	23.3	22.3	23.2	23.4	24.9	30.1
<b>Guilford CC</b>	13.9	4.6	18.5	13.9	17.6	16.2	14.9	15.5
<b>System Average</b>	15.3	5.6	20.9	20.4	20.6	20.0	20.2	22.6

Wake Tech CC had the fourth highest figure for 2001: 28.8 (ALL HOURS)

Facilities Inventory and Utilization Study 2001  
State of North Carolina Higher Education Comprehensive Planning Program  
The University of North Carolina Commission on Higher Education Facilities Chapel Hill,  
North Carolina, December 2002

### Average Weekly Room Hours of Instruction in Class Laboratories

Is the average number of hours that an institution's class laboratories are used for instructional purposes each week.

For purposes of this study, a class laboratory is defined as a room used primarily for regularly scheduled classes that require special-purpose equipment for student participation, experimentation, observation or practice in a field of study.

Daytime utilization is based on all classes with beginning times between and including 5:00 a.m. and 4:59 p.m.; nighttime utilization is based on all other classes. The "All Hours" section in Table 4 indicates the sum of the daytime and nighttime figures for the last five years.

**Average Weekly Room Hours of Instruction in Class Laboratories (Table 4)**

	Daytime Hours	Nighttime Hours	All Hours					
			2001	2000	1999	1998	1997	1996
<b>Wake Tech CC</b>	21.0	7.5	28.5*	30.0	27.3	28.8	26.3	28.6
<b>Central Piedmont CC</b>	12.5	5.2	17.7	18.4	18.0	20.1	19.4	26.0
<b>Fayetteville CC</b>	14.0	4.1	18.1	16.9	17.7	17.6	20.2	17.5
<b>Guilford CC</b>	11.0	4.1	15.1	13.9	14.7	13.1	13.2	13.9
<b>System Average</b>	13.3	4.8	18.1	18.0	17.8	17.6	17.9	19.0

\*Wake Tech CC had the second highest figure for 2001: 28.5 (ALL HOURS)

\* Surry CC had the highest figure for 2001: 29.1 (ALL HOURS)

Facilities Inventory and Utilization Study 2001

State of North Carolina Higher Education Comprehensive Planning Program

The University of North Carolina Commission on Higher Education Facilities Chapel Hill,  
North Carolina, December 2002

### Average Weekly Use of Student Stations in Classrooms

The average number of hours each week that each classroom student station (seat) is used.

**Average Weekly Use of Student Stations in Classrooms (Table 5)**

	<b>Daytime Hours</b>	<b>Nighttime Hours</b>	<b>All Hours</b>					
			<b>2001</b>	<b>2000</b>	<b>1999</b>	<b>1998</b>	<b>1997</b>	<b>1996</b>
<b>Wake Tech CC</b>	15.0	3.0	18.0*	18.4	18.8	17.1	15.1	15.2
<b>Central Piedmont CC</b>	9.6	3.5	13.1	10.8	10.5	12.2	12.2	14.6
<b>Fayetteville CC</b>	8.9	2.4	11.3	11.1	12.4	12.3	12.2	15.5
<b>Guilford CC</b>	10.1	3.0	13.1	9.6	11.6	10.5	10.0	9.5
<b>System Average</b>	9.2	2.9	12.1	11.2	11.5	11.2	11.2	12.6

Wake Tech CC had the second highest figure for 2001: 18.0

\* Pitt CC had the highest figure for 2001: 20.4

Facilities Inventory and Utilization Study 2001

State of North Carolina Higher Education Comprehensive Planning Program

The University of North Carolina Commission on Higher Education Facilities Chapel Hill,  
North Carolina, December 2002

### Average Weekly Use of Student Stations in Class Laboratories

The average number of hours each week that each class lab student station is used.

**Average Weekly Use of Student Stations in Class Laboratories (Table 6)**

	<b>Daytime Hours</b>	<b>Nighttime Hours</b>	<b>All Hours</b>					
			<b>2001</b>	<b>2000</b>	<b>1999</b>	<b>1998</b>	<b>1997</b>	<b>1996</b>
<b>Wake Tech CC</b>	15.6	5.7	21.3*	22.9	21.5	23.3	19.7	20.7
<b>Central Piedmont CC</b>	6.5	2.8	9.3	8.5	9.3	11.2	10.5	13.8
<b>Fayetteville CC</b>	8.4	2.0	10.4	8.9	9.7	9.8	10.6	10.6
<b>Guilford CC</b>	8.2	2.9	11.1	10.7	10.1	9.3	9.9	9.7
<b>System Average</b>	8.5	2.7	11.2	10.6	10.6	10.7	10.6	11.5

\* Wake Tech CC had the highest figure for 2001: 21.3

Facilities Inventory and Utilization Study 2001  
State of North Carolina Higher Education Comprehensive Planning Program  
The University of North Carolina Commission on Higher Education Facilities Chapel Hill,  
North Carolina, December 2002

### Percent Student Station Utilization Classrooms and Class Laboratories

Percent student station utilization indicates the average percentage of student stations (seats) that are occupied when classrooms or class laboratories are in use.

#### Percent Student Station Utilization Classrooms and Class Laboratories (Table 7)

##### Classrooms

<b>CLASSROOMS</b>	<b>2001</b>	<b>2000</b>	<b>1999</b>	<b>1998</b>	<b>1997</b>	<b>1996</b>
<b>Wake Tech CC</b>	63.9*	63.6	64.2	64.2	61.8	59.4
<b>Central Piedmont CC</b>	54.9	47.5	48.1	52.9	53.4	53.6
<b>Fayetteville CC</b>	45.1	46.1	49.9	50.2	47.3	49.7
<b>Guilford CC</b>	66.6	61.1	62.6	61.6	64.8	58.1
<b>System Average</b>	55.2	52.0	53.1	53.0	52.6	52.8

\* Wake Tech CC had the fifth highest classroom figure for 2001: 63.9

##### Class Laboratories

<b>LABORATORIES</b>	<b>2001</b>	<b>2000</b>	<b>1999</b>	<b>1998</b>	<b>1997</b>	<b>1996</b>
<b>Wake Tech CC</b>	68.7*	70.1	72.2	75.6	71.3	67.8
<b>Central Piedmont CC</b>	48.9	43.9	49.7	48.1	45.2	44.7
<b>Fayetteville CC</b>	54.2	50.5	53.4	54.2	52.3	57.0
<b>Guilford CC</b>	62.4	65.8	61.7	65.0	67.2	63.4
<b>System Average</b>	56.3	53.9	54.8	55.8	54.5	55.8

\* Wake Tech CC had the third highest figure for Class Laboratories for 2001: 68.7

Facilities Inventory and Utilization Study 2001

State of North Carolina Higher Education Comprehensive Planning Program

The University of North Carolina Commission on Higher Education Facilities Chapel Hill,  
North Carolina, December 2002

## Enrollments

This table for 1996-1998 lists only fall on-campus (inventoried space) credit enrollment. Noncredit enrollments are not included. Instruction which took place in facilities not on a community college's facilities inventory was not considered in determining the FTE enrollment listed. For 1999 and 2000, the fall on-campus credit FTE is provided, but as a means of comparison, the total fall credit FTE (representing both on-campus and off-campus credit instruction) is listed for all colleges in parentheses.

**FTE Enrollments (Table 12)**

	<b>2001</b>	<b>2000</b>	<b>1999</b>	<b>1998</b>	<b>1997</b>	<b>1996</b>
<b>Wake Tech CC</b>	6,322 (7,158)	5,846 (6,556)	5,338 (7,788)	5,022	4,452	4,250
<b>Central Piedmont CC</b>	6,378 (9,556)	6,188 (8,850)	6,426 (10,666)	6,966	6,810	7,943
<b>Fayetteville CC</b>	4,990 (6,296)	4,652 (5,748)	4,832 (8,088)	4,514	4,296	4,997
<b>Guilford CC</b>	5,988 (6,304)	5,568 (5,842)	5,160 (6,566)	4,994	4,670	5,076

\* Figures in parentheses represent total FTE enrollments (both on and off campus).

Facilities Inventory and Utilization Study 2001  
 State of North Carolina Higher Education Comprehensive Planning Program  
 The University of North Carolina Commission on Higher Education Facilities Chapel Hill,  
 North Carolina, December 2002





# COMPARISONS





# North Carolina Community College System

## Curriculum/Continuing Education Information System

### Annual Curriculum and Continuing Education Student Enrollment by College

ANNTBL1

Report Period: 2001-2002

Last Refresh on: 07/07/03

Colleges	Curriculum Programs					Continuing Education Programs												UNDUPLICATED TOTAL
	ASSOCIATE	CERTIFICATE	DIPLOMA	TRANSITION	CURR SUB-TOTAL	BASIC SKILLS	OCC RB	BUDGET SUBTOTAL	LEARN LAB	OCC SS	FIT	HRD	MIT EIT	SBC	COMM SVC	NON OCC SS	CON-ED SUBTOTAL	
Alamance CC	2,744	418	314	1,232	4,654	2,992	4,483	7,442	0	455	135	61	60	303	632	903	9,560	13,882
Ashville-Buncombe TCC	3,290	225	377	2,399	6,149	3,916	8,037	11,811	0	670	39	787	1,352	512	1,236	1,426	16,739	22,312
Beaufort County CC	1,111	20	153	581	1,854	1,377	2,420	3,744	0	151	0	159	222	299	181	386	4,899	6,586
Bladen CC	471	28	183	521	1,175	806	1,405	2,177	0	0	18	626	83	159	116	481	3,373	4,403
Blue Ridge CC	1,229	220	166	567	2,151	1,876	4,850	6,551	39	689	79	1,121	195	374	444	4,951	13,195	15,027
Brunswick CC	616	103	161	133	1,004	795	2,258	3,030	0	501	11	546	108	137	500	1,169	5,488	6,377
Caldwell CC & TI	2,054	309	699	929	3,918	2,793	3,655	6,353	16	129	47	626	28	673	162	1,341	9,027	12,486
Cape Fear CC	5,065	418	339	965	6,739	3,023	6,875	9,592	1,424	699	79	949	204	226	313	4,075	16,722	21,820
Carroll CC	1,063	73	112	693	1,903	959	2,177	3,101	0	548	2	291	0	572	19	177	4,475	6,166
Catawba Valley CC	3,153	279	234	1,254	4,862	3,830	3,944	7,631	0	1,930	161	217	37	589	773	3,159	13,884	18,167
Central Carolina CC	2,497	1,002	423	979	4,810	4,964	5,715	10,527	0	205	106	801	293	1	468	468	12,547	16,987
Central Piedmont CC	11,408	499	514	12,030	23,954	11,807	10,181	21,758	0	11,228	172	507	350	0	0	3,590	35,124	57,239
Cleveland CC	1,513	194	396	1,097	3,164	819	2,409	3,220	0	92	53	811	648	303	487	539	5,865	8,756
Coastal Carolina CC	3,592	324	364	704	4,993	6,413	9,585	15,885	49	1,834	21	446	0	753	473	2,947	20,699	24,639
College of The Albemarle	1,510	66	200	814	2,575	2,863	3,275	6,090	0	94	0	816	0	1,404	0	719	8,601	10,777
Craven CC	2,268	72	135	690	3,135	1,520	3,490	4,961	11	487	62	769	0	508	264	893	7,439	10,342
Davidson County CC	1,747	221	236	981	3,127	3,595	6,266	9,726	0	687	306	668	110	374	125	214	11,481	14,209
Durham TCC	3,351	217	213	2,627	6,251	4,472	6,259	10,683	0	37	86	3,607	412	0	0	396	14,928	20,699
Edgecombe CC	1,526	14	221	583	2,325	2,152	2,373	4,157	0	18	249	671	159	706	103	81	5,789	7,984
Fayetteville TCC	5,820	110	608	3,852	9,972	6,545	12,807	18,909	0	3,110	60	1,826	314	601	2,039	245	25,708	34,748
Forsyth TCC	4,895	392	448	1,502	7,116	5,938	10,108	15,912	0	3,089	611	201	0	1,064	629	2,388	22,515	28,748
Gaston College	3,574	220	369	771	4,885	3,431	4,609	7,975	0	2,251	117	2,777	385	281	213	1,953	15,008	19,330
Guilford TCC	7,631	52	208	1,585	9,454	5,852	8,188	13,864	0	1,752	131	1,222	244	858	878	7,756	25,357	34,042
Halifax CC	1,162	157	173	276	1,759	1,419	2,378	3,729	14	419	63	36	258	727	327	36	5,339	6,899

\* Unduplicated headcounts are reported in each cell. Rows and columns will not add up.





# North Carolina Community College System

## Curriculum/Continuing Education Information System

### Annual Curriculum and Continuing Education Student Enrollment by College

ANNTBL1

Report Period: 2001-2002

Last Refresh on: 07/07/03

Colleges	Curriculum Programs					Continuing Education Programs												UNDU- PLICATED TOTAL
	ASSOCIATE	CERTIFICATE	DIPLOMA	TRANSITION	CURR. SUB- TOTAL	BASIC SKILLS	OCC:RB	BUDGET SUBTOTAL	LEARN LAB	OCC:SS	FIT	HRD	NIT:BIT	SBC	COMM SVC	NON OCC SS	CON-ED SUBTOTAL	
Haywood CC	1,158	232	80	496	1,935	923	1,767	2,650	696	8	6	682	25	297	145	664	4,733	6,026
Lenoir Community CC	1,168	129	323	534	2,139	1,937	2,179	3,992	0	0	48	151	215	352	10	4,284	8,112	9,916
James Sprunt CC	662	160	282	447	1,521	825	2,155	2,955	284	0	28	90	46	572	176	1,643	5,533	6,719
Johnston CC	1,940	780	216	1,033	3,934	1,865	4,381	6,178	317	808	104	128	293	908	122	986	9,346	12,571
Lenoir CC	1,724	136	99	682	2,607	2,741	4,057	6,643	0	0	53	944	790	1,052	208	1,761	10,773	12,973
Martin CC	565	13	73	172	821	958	1,558	2,486	0	94	6	308	273	140	401	20	3,536	4,297
Wayland CC	581	294	189	392	1,436	1,019	2,507	3,429	0	166	59	190	193	166	32	511	4,535	5,703
McDowell TCC	870	141	235	253	1,463	840	2,671	3,495	0	3,219	132	1,238	319	198	128	981	8,788	9,912
Mitchell CC	1,434	107	419	590	2,492	2,442	3,327	5,683	0	352	134	1,324	7	291	73	1,051	8,229	10,482
Montgomery CC	486	98	107	166	844	625	1,241	1,838	2	333	12	77	159	243	72	86	2,642	3,383
Nash CC	1,974	320	80	573	2,925	1,890	4,141	5,975	359	346	162	298	684	387	316	335	8,370	11,011
Pamlico CC	200	76	26	61	360	383	660	1,005	0	0	0	72	0	171	118	0	1,284	1,583
Piedmont CC	985	443	182	709	2,306	2,512	1,841	4,239	0	492	63	447	53	495	202	0	5,730	7,804
Pitt CC	4,335	198	220	1,505	6,198	2,292	4,128	6,349	0	3,845	170	811	205	210	146	84	11,082	16,701
Randolph CC	1,429	146	310	507	2,345	2,179	4,209	6,272	0	489	368	302	70	531	329	1,257	8,999	11,062
Richmond CC	1,365	51	49	167	1,623	2,852	1,896	4,247	0	51	219	499	128	214	79	0	4,912	6,469
Rosario-Crowan CC	770	75	117	176	1,094	845	960	1,783	0	2	15	23	0	450	370	20	2,628	3,608
Robeson CC	1,656	210	169	162	2,183	3,062	5,048	8,021	0	590	71	433	122	642	369	187	10,002	11,914
Rockingham CC	1,297	449	203	421	2,323	1,477	3,466	4,764	0	468	246	417	122	596	305	2,234	8,487	10,439
Rowan-Cabarrus CC	3,235	754	337	1,195	5,408	3,233	5,375	8,554	0	2,660	211	440	937	433	244	384	12,422	17,428
Sampson CC	963	128	130	399	1,599	1,208	2,151	3,272	0	112	0	2,228	132	538	225	1,269	7,244	8,516
Sandhills CC	2,544	128	129	847	3,615	2,357	4,910	6,977	0	1,058	38	161	115	603	177	830	9,418	12,720
Southeastern CC	1,315	189	160	318	1,969	1,866	3,015	4,740	0	43	15	464	127	780	1,193	24	7,040	8,525
South Piedmont CC	745	500	266	561	2,005	2,294	1,791	4,026	0	661	132	2,062	7	224	119	333	7,076	8,769

\* Unduplicated headcounts are reported in each cell. Rows and columns will not add up.





# North Carolina Community College System

## Curriculum/Continuing Education Information System

### Annual Curriculum and Continuing Education Student Enrollment by College

ANNTBL1

Report Period: 2001-2002

Last Refresh on: 07/07/03

Colleges	Curriculum Programs					Continuing Education Programs												UNDUPLICATED TOTAL
	ASSOCIATE	CERTIFICATE	DIPLOMA	TRANSITION	CURR SUB-TOTAL	BASIC SKILLS	OCC RS	BUDGET SUBTOTAL	LEARN LAB	OCC SS	FIT	HRD	NIT EIT	SBC	COMM SVC	NON OCC SS	CON-ED SUBTOTAL	
Southwestern CC	1,326	84	37	492	1,925	1,761	2,947	4,439	0	411	292	755	0	193	0	565	5,836	7,611
Stanly CC	1,057	243	113	549	1,914	1,326	2,842	4,107	0	145	48	168	64	123	128	83	4,656	6,334
Surry CC	2,364	138	493	909	3,819	2,301	4,433	6,584	0	128	386	1,004	7	795	552	1,396	9,604	12,812
Tri-County CC	972	45	124	171	1,290	608	1,438	2,009	0	474	18	659	298	231	389	145	3,761	4,779
Vance-Granville CC	2,336	242	287	1,390	4,208	2,764	6,229	8,818	0	231	185	378	1,317	427	260	604	11,579	15,278
Wake TCC	8,542	1,456	415	1,559	11,793	9,650	15,558	24,883	3,072	2,502	695	1,253	585	1,133	2,699	308	34,704	43,821
Wayne CC	2,692	83	228	666	3,617	3,409	4,674	7,794	538	79	41	1,111	25	904	134	1,009	10,466	13,690
Western Piedmont CC	1,956	157	99	625	2,799	3,219	4,588	7,591	336	1,252	122	793	52	301	348	2,113	11,867	14,307
Wilkes CC	1,791	114	146	489	2,518	2,265	4,966	7,000	0	524	532	1,110	223	228	339	135	9,267	11,385
Wilson TCC	1,321	112	201	536	2,124	1,771	4,608	6,336	0	266	106	63	247	769	578	39	8,028	9,854
Total 2001-2002	129,861	14,040	13,768	56,966	209,455	153,211	226,596	371,718	7,152	52,575	7,263	41,491	13,280	26,788	21,310	65,513	561,334	739,067
Total 2000-2001	145,155	18,287	15,506	75,432	244,508	157,792	233,569	383,646	6,581	52,370	9,714	36,693	19,748	26,235	25,181	61,202	577,216	779,931
Total 1999-2000	141,826	16,609	15,749	68,233	233,514	147,259	241,699	381,416	6,600	56,399	8,653	24,814	18,004	24,422	28,535	60,121	564,454	757,747

\* Unduplicated headcounts are reported in each cell. Rows and columns will not add up.



**North Carolina Community College System**  
**Course FTE Information System**  
**Two Semester Annualized FTE**  
**ANNTBL29**

Fall 2001 - Spring 2002

Last Refresh on: 6/28/2002

Colleges	Fall	Spring	2001-2002 Annual FTE	2000-2001 Annual FTE	1999-2000 Annual FTE
Alamance CC	1,285	1,279	2,564	2,089	2,104
Asheville-Buncombe TCC	1,962	1,883	3,845	3,381	3,155
Beaufort County CC	657	633	1,290	1,132	1,149
Bladen CC	456	475	931	802	800
Blue Ridge CC	697	691	1,389	1,299	1,229
Brunswick CC	387	366	754	711	698
Caldwell CC & TI	1,430	1,363	2,793	2,491	2,336
Cape Fear CC	2,356	2,362	4,717	4,111	3,937
Carteret CC	663	662	1,324	1,189	1,155
Catawba Valley CC	1,453	1,418	2,871	2,619	2,439
Central Carolina CC	1,716	1,651	3,367	3,222	2,903
Central Piedmont CC	4,778	4,639	9,417	8,521	8,057
Cleveland CC	984	1,001	1,984	1,501	1,566
Coastal Carolina CC	1,485	1,429	2,914	2,726	2,706
College of The Albemarle	799	789	1,588	1,538	1,512
Craven CC	881	881	1,762	1,697	1,665
Davidson County CC	1,056	1,021	2,077	1,839	1,740
Durham TCC	1,599	1,528	3,126	2,824	2,826
Edgecombe CC	751	794	1,545	1,316	1,234
Fayetteville TCC	3,148	3,278	6,425	5,871	5,948
Forsyth TCC	2,163	2,099	4,262	3,858	3,649
Gaston College	1,709	1,692	3,401	2,983	2,824
Guilford TCC	3,152	2,879	6,030	5,487	5,161
Halifax CC	659	708	1,367	1,102	1,277
Haywood CC	704	698	1,401	1,297	1,237
Isothermal CC	716	735	1,451	1,448	1,588
James Sprunt CC	529	549	1,078	984	913
Johnston CC	1,288	1,226	2,514	2,427	2,330
Lenoir CC	963	936	1,899	1,657	1,675
Martin CC	299	341	640	569	617
Mayland CC	519	475	995	759	657
McDowell TCC	485	477	962	807	813
Mitchell CC	783	724	1,507	1,317	1,278
Montgomery CC	256	314	569	531	522
Nash CC	887	828	1,715	1,517	1,289
Pamlico CC	146	141	287	228	229
Piedmont CC	769	797	1,566	1,441	1,371
Pitt CC	2,149	2,034	4,183	3,864	3,760

# North Carolina Community College System

## Course FTE Information System

### Two Semester Annualized FTE

ANNTBL29

Fall 2001 - Spring 2002

Last Refresh on: 6/28/2002

Colleges	Fall	Spring	2001-2002 Annual FTE	2000-2001 Annual FTE	1999-2000 Annual FTE
Randolph CC	709	694	1,403	1,382	1,379
Richmond CC	611	581	1,192	1,083	1,068
Roanoke-Chowan CC	379	360	739	753	691
Robeson CC	932	859	1,791	1,536	1,476
Rockingham CC	811	740	1,551	1,452	1,443
Rowan-Cabarrus CC	1,642	1,498	3,139	2,784	2,658
Sampson CC	530	497	1,027	898	966
Sandhills CC	1,383	1,352	2,734	2,513	2,511
Southeastern CC	883	876	1,759	1,708	1,742
South Piedmont CC	662	629	1,290	1,199	1,107
Southwestern CC	715	714	1,429	1,381	1,391
Stanly CC	696	684	1,379	1,181	1,108
Surry CC	1,378	1,297	2,675	2,362	2,296
Tri-County CC	435	532	967	842	860
Vance-Granville CC	1,480	1,428	2,908	2,662	2,505
Wake TCC	3,579	3,382	6,961	6,460	5,932
Wayne CC	1,212	1,161	2,372	2,308	2,252
Western Piedmont CC	908	891	1,799	1,561	1,584
Wilkes CC	968	988	1,956	1,626	1,570
Wilson TCC	657	666	1,323	1,196	1,102
<b>Total 2001-2002</b>	<b>67,288</b>	<b>65,621</b>	<b>132,909</b>	<b>0</b>	<b>0</b>
<b>Total 2000-2001</b>	<b>61,329</b>	<b>58,713</b>	<b>0</b>	<b>120,042</b>	<b>0</b>
<b>Total 1999-2000</b>	<b>59,646</b>	<b>56,349</b>	<b>0</b>	<b>0</b>	<b>115,994</b>

# North Carolina Community College System

## Course FTE Information System

Two Semester Annualized FTE

Ranked by Annual FTE

ANNTBL29

Fall 2001 - Spring 2002

Last Refresh on: 6/28/2002

Rank	Colleges	Fall	Spring	2001-2002 Annual FTE	2000-2001 Annual FTE	1999-2000 Annual FTE
1	Central Piedmont CC	4,778	4,639	9,417	8,521	8,057
2	Wake TCC	3,579	3,382	6,961	6,460	5,932
3	Fayetteville TCC	3,148	3,278	6,425	5,871	5,948
4	Guilford TCC	3,152	2,879	6,030	5,487	5,161
5	Cape Fear CC	2,356	2,362	4,717	4,111	3,937
6	Forsyth TCC	2,163	2,099	4,262	3,858	3,649
7	Pitt CC	2,149	2,034	4,183	3,864	3,760
8	Asheville-Buncombe TCC	1,962	1,883	3,845	3,381	3,155
9	Gaston College	1,709	1,692	3,401	2,983	2,824
10	Central Carolina CC	1,716	1,651	3,367	3,222	2,903
11	Rowan-Cabarrus CC	1,642	1,498	3,139	2,784	2,658
12	Durham TCC	1,599	1,528	3,126	2,824	2,826
13	Coastal Carolina CC	1,485	1,429	2,914	2,726	2,706
14	Vance-Granville CC	1,480	1,428	2,908	2,662	2,505
15	Catawba Valley CC	1,453	1,418	2,871	2,619	2,439
16	Caldwell CC & TI	1,430	1,363	2,793	2,491	2,336
17	Sandhills CC	1,383	1,352	2,734	2,513	2,511
18	Surry CC	1,378	1,297	2,675	2,362	2,296
19	Alamance CC	1,285	1,279	2,564	2,089	2,104
20	Johnston CC	1,288	1,226	2,514	2,427	2,330
21	Wayne CC	1,212	1,161	2,372	2,308	2,252
22	Davidson County CC	1,056	1,021	2,077	1,839	1,740
23	Cleveland CC	984	1,001	1,984	1,501	1,566
24	Wilkes CC	968	988	1,956	1,626	1,570
25	Lenoir CC	963	936	1,899	1,657	1,675
26	Western Piedmont CC	908	891	1,799	1,561	1,584
27	Robeson CC	932	859	1,791	1,536	1,476
28	Craven CC	881	881	1,762	1,697	1,665
29	Southeastern CC	883	876	1,759	1,708	1,742
30	Nash CC	887	828	1,715	1,517	1,289
31	College of The Albemarle	799	789	1,588	1,538	1,512
32	Piedmont CC	769	797	1,566	1,441	1,371
33	Rockingham CC	811	740	1,551	1,452	1,443
34	Edgecombe CC	751	794	1,545	1,316	1,234
35	Mitchell CC	783	724	1,507	1,317	1,278
36	Isothermal CC	716	735	1,451	1,448	1,588



# North Carolina Community College System

## Course FTE Information System

Two Semester Annualized FTE

Ranked by Annual FTE

ANNTBL29

Fall 2001 - Spring 2002

Last Refresh on: 6/28/2002

Rank	Colleges	Fall	Spring	2001-2002 Annual FTE	2000-2001 Annual FTE	1999-2000 Annual FTE
37	Southwestern CC	715	714	1,429	1,381	1,391
38	Randolph CC	709	694	1,403	1,382	1,379
39	Haywood CC	704	698	1,401	1,297	1,237
40	Blue Ridge CC	697	691	1,389	1,299	1,229
41	Stanly CC	696	684	1,379	1,181	1,108
42	Halifax CC	659	708	1,367	1,102	1,277
43	Carteret CC	663	662	1,324	1,189	1,155
44	Wilson TCC	657	666	1,323	1,196	1,102
45	South Piedmont CC	662	629	1,290	1,199	1,107
46	Beaufort County CC	657	633	1,290	1,132	1,149
47	Richmond CC	611	581	1,192	1,083	1,068
48	James Sprunt CC	529	549	1,078	984	913
49	Sampson CC	530	497	1,027	898	966
50	Mayland CC	519	475	995	759	657
51	Tri-County CC	435	532	967	842	860
52	McDowell TCC	485	477	962	807	813
53	Bladen CC	456	475	931	802	800
54	Brunswick CC	387	366	754	711	698
55	Roanoke-Chowan CC	379	360	739	753	691
56	Martin CC	299	341	640	569	617
57	Montgomery CC	256	314	569	531	522
58	Pamlico CC	146	141	287	228	229
	<b>Total 2001-2002</b>	<b>67,288</b>	<b>65,621</b>	<b>132,909</b>	<b>0</b>	<b>0</b>
	<b>Total 2000-2001</b>	<b>61,329</b>	<b>58,713</b>	<b>0</b>	<b>120,042</b>	<b>0</b>
	<b>Total 1999-2000</b>	<b>59,646</b>	<b>56,349</b>	<b>0</b>	<b>0</b>	<b>115,994</b>