

**WAKE TECHNICAL COMMUNITY
COLLEGE**

FACT BOOK

**INSTITUTIONAL EFFECTIVENESS, GRANTS
DEVELOPMENT AND SPECIAL PROJECTS**

APRIL 2002

WAKE TECHNICAL COMMUNITY COLLEGE 2002 FACT BOOK

TABLE OF CONTENTS

Policy Statement	1
Purpose of this FACT BOOK	2
Mission Statement	3
Glossary	6
The College.....	11
Service Area: Wake County	33
Students	35
Continuing Education	50
Employees	58
Facilities	61
Comparisons	71

POLICY STATEMENT

AFFIRMATIVE ACTION/EQUAL OPPORTUNITY

Wake Technical Community College offers Equal Employment and Educational Opportunities to all employees, students, prospective employees, and prospective students.

Affirmative Action, Equal Educational Opportunities, and Compliance with the Americans With Disabilities Act are viewed by the Board of Trustees as an integral part of the mission and purpose of Wake Technical Community College.

Questions concerning this policy should be addressed to:

STUDENT MATTERS:

Dean of Students
Wake Technical Community College
9101 Fayetteville Road
Raleigh, NC 27603-5696

EMPLOYEE MATTERS:

Human Resources Manager
Wake Technical Community College
9101 Fayetteville Road
Raleigh, NC 27603-5696

Individuals with disabilities who need assistance or require special accommodations to access College activities should request such services in advance by calling Disability Support Services at (919) 662-3405 or (919) 779-0668 (TDD).

PURPOSE OF THIS FACT BOOK

This **Fact Book** is designed to provide the public whom we serve, college administrators, planners, and other selected individuals such as trustees, local commissioners, legislators, and key college friends with an easily readable compilation of data about the College. While some historical information is included, the data and facts provide a profile of the College for one year. Accumulations of data, such as data for the last five years, are included as appropriate to illustrate change or percent of change.

This book has been compiled by the College's Office of Institutional Effectiveness, Grants Development, and Special Projects under the direction of Dr. John B. Boone, Dean of Institutional Effectiveness, Grants Development and Special Projects.

Every effort has been made to make the **FACT BOOK** as error-free as possible. However, it will be greatly appreciated if typographical errors, incorrect data, and suggestions for improving the **FACT BOOK** are forwarded to the Office of Institutional Effectiveness, Grants Development and Special Projects, Room 143, Holding Hall. Ms. Tammy Stephenson may be reached at 662-3451 and Dr. John Boone at 662-3454

MISSION STATEMENT

The mission of Wake Technical Community College is to provide quality education and training for the workforce including vocational, technical, college/university transfer, and basic skills programs. The College is a public, two-year, comprehensive, post-secondary educational institution. The major purpose is and shall continue to be the offering of quality vocational and technical education and training. Through its open-door policy, the college offers educational opportunities to all adults regardless of age, sex, socio-economic status, ethnic origin, race, religion, or disability.

ROLE AND SCOPE

In order to implement its mission through clearly defined programs and services, the College:

offers credit programs leading to associate degrees, diplomas and certificates designed for immediate entry into employment, an associate degree in general education, and associate degrees designed to transfer to four-year institutions. The College also offers pre-curriculum programs for students to develop academic proficiency so that they may successfully complete curriculum courses.

provides occupational career enhancement programs for individuals and support for economic development to businesses, industries, and agencies. Basic skills education, English as a Second Language, and a wide variety of continuing education courses and programs for personal enrichment are offered on campus and throughout the county. The College further serves its constituents by providing a broad range of community services, partnerships and outreach programs.

provides a wide range of support services designed to assist students in successfully fulfilling their education and occupational goals. These services, developed to meet the diverse needs of individual students, begin with their initial contact with the College and continue throughout their enrollment and job placement or transfer for further study.

practices sound fiscal management and systematic planning to provide facilities, equipment, and state-of-the art technology to ensure quality education opportunities at secure facilities accessible to Wake County citizens.

OUR VISION

Wake Tech will be a leader among the 59 NCCCS institutions and will:

- ◆ strive for quality and excellence in all educational programs by closely monitoring students satisfaction and success through a comprehensive system of research and institutional effectiveness

- ◆ position itself as a primary choice of Wake County citizens for workforce development, occupational, college/university transfer, basic education, and lifelong learning opportunities.
- ◆ be a major partner in attracting new and expanding business and industry by emphasizing human resource development and technology transfer.
- ◆ maximize service to area citizens by listening and responding to changing educational needs.

COLLEGE GOALS

Student Success

Provide a dynamic learning environment to ensure successful achievement of students' goals by administering sound policies, curricula, instruction and support services.

Workforce Development

In collaboration with *Regional Economic Development Partnerships*, identify the workforce needs of emerging jobs in rural and urban economies in North Carolina. Develop and implement the educational and training programs necessary to meet the workforce needs of each region and college services area and promote recruitment, retention and development of high quality faculty and staff necessary to achieve the educational and training objectives of the community college system and provide North Carolina with a world-class workforce.

Diverse Populations Learning Needs

Provide North Carolina citizens with the opportunity to develop essential skills for lifelong learning. Upgrade and retrain North Carolina learners for the workplace through flexible, accessible, customized educational and training programs within their communities.

Resources

Continuously research, analyze and secure the resources necessary to fulfill the mission of the North Carolina Community College System and develop processes for measuring the effectiveness of resource allocations and utilization, within the North Carolina Community College System.

Technology

Encourage and support North Carolina Community College faculty and staff in the effective and efficient uses of instructional technology and administrative computing systems to improve the delivery of academic programs to North Carolina citizens.

Community Services

Provide courses and support service activities for the enrichment of the community's civic, economic, and cultural needs.

Southern Association of Colleges and Schools Accreditation

Wake Technical Community College is accredited by the Commission on Colleges of the Southern Association of Colleges and Schools (1866 Southern Lane; Decatur, Georgia 30033-4097; Telephone Number 404-679-4501) to award the associate degree.

GLOSSARY

Academic Extension (non-credit) Courses consist of single courses, each complete in itself, designed to serve the academic educational needs of adult citizens.

Academic Semester - A sixteen week period during which credit classes are offered.

Academic Year - The academic year includes fall and spring semesters as well as an eleven-week summer term.

Accreditation - A formal means of recognizing an institution for maintaining standards that qualify the graduate for admission to higher institutions or for professional practice. Accrediting agencies are responsible for establishing the standards and evaluating the school's compliance with them (e.g., Southern Association of Colleges and Schools, American Dental Association, Engineering).

Accountability - The acceptance of personal responsibility for the achievement of predetermined measurable objectives.

Adult Education - Programs offered by a community college or technical institute that provide opportunities for adults and out-of-school youth to further their education.

Associate in Applied Science Programs - These programs range from 64 to 76 semester hour credits. A full-time student can typically complete one of these programs within two years. In addition to major course work, associate in applied science degree programs require a minimum of 15 semester hour credits of general education. General education requirements include course work in communications, humanities/fine arts, social/behavioral sciences and natural sciences/mathematics. Certain courses in associate degree programs may be accepted by a four-year college or university for transfer credit in an associated field.

Average Annual FTE - The annualized FTE of the fall and spring semesters added together for a given year.

Example: One full-time equivalent (FTE) student represents 16 student membership hours per week for 16 weeks or 256 student membership hours for each semester enrolled. Thus, if:

Fall Semester = $\frac{1,301,151}{512}$ membership hours = 2541 FTE
512 membership hours annualized
(256 X 2 semesters = 512)

Spring Semester = $\frac{1,245,103}{512}$ = 2432 FTE

Average Annual FTE = 2541 (Fall)
+2432 (Spring)
4973

Avocational Extension (non-credit) Courses consist of single courses, each complete in itself, which focus on an individual's personal or leisure needs rather than his occupation, profession, or employment.

Basic Skills - One of the primary missions of Wake Tech is to offer educational opportunities for adults 16 years of age and older who are out of school. Wake Tech provides educational opportunities through five major literacy components, consisting of classes located at work sites, churches, community centers, schools, libraries, sheltered workshops, prisons and the community college campuses.

Adult Basic Education (ABE) - A program of basic skills for adults, 16 years of age or older and out of school, who function at less than a high school level.

General Educational Development (GED) - A high school equivalency program enabling adults to take the General Education Development Tests to determine if they are at the 12th grade completion level of English, social studies, science, reading, and math. Individuals achieving the required scores on the GED are awarded the High School Equivalency Diploma. The program is open to individuals 18 years or older.

Adult High School (AHS) - A program of instruction offered cooperatively with local public school systems to help students earn an adult high school diploma.

English as a Second Language (ESL) - A program of instruction to help adults with limited or no English language proficiency.

Compensatory Education - A special state-funded educational program for developmentally handicapped adults (over 17 years of age).

Base Budget - Appropriations made by the Legislature to fund the current level of operation.

Capital Outlay - Capital outlay expenditures are those that result in the acquisition of fixed assets or additions to fixed assets (i.e., expenditures for land, buildings, or equipment).

Categorical Funds (restricted) - Funds from a federal, state, local, or private source that are restricted to expenditures in a particular category or program.

Certificate Programs - These programs range from 12 to 18 semester hour credits and can usually be completed within one semester by a full-time student. Associate degree level courses within a certificate program may also be applied toward a diploma or an associate in applied science degree.

Certification - A voluntary form of recognition for knowledge and skill in a particular profession.

Clock Hour - One hour of instruction given one student. Class periods from 50-60 minutes may be counted as one clock hour depending on the type of instruction delivered.

College Transfer Programs - These programs are offered through the Associate in Arts, Associate in Fine Arts and Associate in Science degrees. The Associate in Arts and the Associate in Science programs are part of the Comprehensive Articulation Agreement (CAA). This agreement addresses the transfer of students between institutions in the North Carolina Community College System and the constituent institutions of the University of North Carolina System.

Community Service Programs consist of those continuing education (extension) programs that are directed to the academic, avocational, and development of personal skills of the community.

Competency-Based Instruction - Instruction based on measurable student performance outcomes consistent with the skills and knowledge needed by entry-level employees in a particular field.

Continuing Education/Extension Programs include New and Expanding Industry, and Self-Supporting Recreational programs in addition to the Regular Budget Extension program areas of Adult High School, Academic Extension, Avocational Extension, Occupational Extension, Practical Skills, Adult Basic Education and Compensatory Education.

Credit Hour - An instructional unit used for recognition of the amount of credit a student earns for a given course. Example: Semester Credit Hour - A student who spends one classroom hour per week in a class for sixteen weeks earns one semester hour credit.

Current Expense - Funds used for the general operation of the institution to include salaries, benefits, and other instructional costs.

Curriculum Programs - A term used to describe a wide variety of planned educational programs which range in length from one semester to two years. The programs lead to certificates, diplomas or associate degrees, depending on the nature of the curriculum. Curriculum programs include certificate, diploma, Associate in Applied Science, Associate in Arts, Associate in Fine Arts, Associate in Science and Associate in General Education programs.

Developmental Education - A program providing specialized credit courses for students who need to improve their basic skill in order to perform at the level required for admission to degree and diploma programs. Usually these courses are in reading, writing, and mathematics.

Diploma Programs - These programs range from 36 to 48 semester hour credits and can usually be completed by a full-time student within two semesters and one summer term. Associate degree level courses within a diploma program may also be applied toward an Associate in Applied Science degree.

English as a Foreign Language (EFL) A pre-curriculum program designed to help non-native speaking students acquire sufficient skills in English to enter and succeed in curriculum (academic) programs. These courses are available only on Wake Tech's 401 South Campus.

English as a Second Language (ESL) - A program of instruction to help adults with limited or no English language proficiency. These courses are usually offered through continuing education at off-campus sites for students who have non-academic goals such as improvement of job performance, better communication with family members or the general public, etc.

Expansion Budget - Additional funds from the Legislature to increase the quantity or quality of services rendered.

Fiscal Year - The twelve-month period upon which the institution's budget is based, July 1 - June 30.

Full-Time Equivalent (FTE) - One full-time equivalent (FTE) student represents 16 student membership hours per week for 16 weeks or 256 student membership hours for each semester enrolled.

Annual Curriculum FTE - The total of fall and spring FTE.

Annual Extension FTE - The total of spring, summer and fall sequenced periods FTE.

Budget Full-Time Equivalent (B/FTE) - Used to prepare the operating budget and to provide for an equitable distribution of the operating funds allocated by the State Board to the institutions.

Equipment Full-Time Equivalent (E/FTE) - Used to prepare the equipment budget and to provide for an equitable distribution of the equipment funds allocated by the State Board to the institutions.

Library Full-Time Equivalent (L/FTE) - Used to prepare the library budget to provide for an equitable distribution of library funds allocated for the purchase of library books and audiovisual materials.

Credit Hour Full-Time Equivalent (H/FTE) - Used in furnishing data to the North Carolina Commission on Higher Education Facilities and the University of North Carolina.

Construction Full-Time Equivalent (C/FTE) - Used to determine priorities and institutional eligibility for federal and state construction funds for the institutions.

Full-Time Students - A student is considered full time if he/she carries 12 or more semester credit hours of classes.

General Education Programs - These programs are designed for individuals wishing to broaden their education, with emphasis on personal interest, growth and development. The two-year General Education program provides students opportunities to study English, literature, fine arts, philosophy, social science, science and mathematics at the college level. All courses in the program are college-level courses. Many of the courses are equivalent to college transfer courses; however, the program is not principally designed for college transfer. Successful completion of 64-65 semester hour credits leads to an associate in general education degree.

Human Resources Development (HRD) - A program for chronically unemployed adults with prevocational training and counseling.

Job Training Partnership Act (JTPA) - A federal program designed to provide job training and employment opportunities for economically disadvantaged, unemployed, or underemployed persons.

Learning Laboratory Programs (Center) consists of resources to help students succeed in their courses of study at Wake Tech. A learning lab coordinator or instructor offers one-on-one tutorial assistance, combined with a variety of other techniques and materials such as audiovisual and computer equipment and self-instructional materials, in an effort to help students learn.

New and Expanding Industry Programs provide for the training needs of new industries which are moving into the state and also for existing industries undergoing a major expansion which result in the need for additional skilled manpower.

Non-Credit (Extension) Courses - Courses for professional training, upgrading or general interest.

Occupational Education - Any type of instruction or training (credit or non-credit) that prepares one to enter an occupation.

Other Costs - A term used to describe current instructional and operating instructional support costs excluding personnel and the associated fringe benefits. The term is used for supplies, travel, postage, etc.

Pell Grants - Needs-based federally funded grants.

Practical Skills Extension (non-credit) Programs consist of single courses each complete in itself, designed to provide practical training for persons pursuing additional skills which are not considered their major primary vocation but may supplement income or may reasonably lead to employment.

Regular Budget Extension Programs include Adult High School, Occupational Extension, Adult Basic Education and Compensatory Education.

Self-Supporting Recreational Programs are self-supporting courses which the college may provide at the request of the community but for which the college receives no budgetary credit.

Unduplicated Headcount - The total number of students (both full-time and part-time) enrolled in all courses during a year. Each student is counted only once during the year regardless of the number of classes he/she takes or the number of semesters for which he/she registers.

Source: A Matter of Facts, The North Carolina Community College System Fact Book, 1998.

Annual Statistical Report, 1998-1999, North Carolina Community College System.

THE COLLEGE

HISTORY

WAKE TECHNICAL COMMUNITY COLLEGE

Wake Technical Community College is a public educational institution, nonprofit and tax supported, under the control of a Board of Trustees. It is an institutional member of the North Carolina System of Community Colleges, State Board of Community Colleges. Authority for the establishment of the College is found in Chapter 115D of the General Statutes of North Carolina and the amendments thereto.

The College was chartered April 3, 1958, as the Wake County Industrial Education Center under the governance of the Wake County Board of Education. In 1961, the Board employed Dr. Kenneth M. Wold as the Center's first Director and charged him with the responsibility of "developing a program of training for adults."

Because there was no central training facility, the first training efforts were conducted in cooperation with employers and users of the training. Practical nursing classes, for example, were held at Wake Memorial Hospital; fire prevention and lifesaving classes were held among area fire departments; and instruction in machine operating and supervision was provided at industrial locations.

On October 7, 1963, operation of the Center began at its present location in a single building of 40,795 square feet and costing \$560,000. There were 34 full-time students enrolled in classes on campus and an additional 270 enrolled in industrial training programs at locations throughout the County.

On January 8, 1964, the Center was formally dedicated as the W. W. Holding Industrial Education Center and was transferred from the authority of the Board of Education to an eight-member Board of Trustees.

In September 1965, Dr. Kenneth M. Wold resigned as Director, and Robert W. LeMay, Jr., head of the Center's general adult and community service programs, was named Acting Director. Mr. LeMay was named President on February 16, 1966.

On March 3, 1966, W. W. Holding Industrial Education Center was granted approval by the State Board of Education as the W. W. Holding Technical Institute.

The name was changed to Wake Technical Institute in 1974 and to Wake Technical College on March 1, 1980. The name was changed to Wake Technical Community College on December 1, 1987, to better reflect the college-level instruction that is provided.

Robert W. LeMay, Jr., served as President through June 30, 1979, at which time James A. Cox, the College's Vice President for Administration, was appointed temporary President. He served until June 30, 1980.

Dr. Bruce I. Howell was named the College's third President on July 1, 1980.

The College has grown since 1963 from the one building of 40,795 square feet to three campuses and facilities that include twenty-two permanent structures totaling over 500,000 square feet.

Today these facilities and a staff and faculty of just over 490 people serve a curriculum unduplicated headcount of approximately 12,000. When non-credit instruction is added to the College's service to Wake County citizens, approximately 44,000 persons take one or more courses annually.

The College entered a contractual agreement with the University of North Carolina at Greensboro to offer college transfer courses in the fall of 1991. Subsequently, a college transfer program was approved to be offered by Wake Tech in the fall quarter of 1992. Students enrolled in the College Transfer program earn Associate in Arts and Associate in Science degrees. The College became a fully comprehensive community college in the fall of 1992.

The Wake Technical Community College News and Observer Adult Education Center formally opened in August 1993. The Center was made possible through a \$100,000 gift from the News and Observer Foundation. Located on Capital Boulevard, the Center provides a home for the College's basic skills program, one of the largest in the North Carolina Community College System. The Adult Education Center also is the headquarters for Wake Tech's Small Business Center.

Wake Tech's share of county and state bond referendums held in 1993 was \$41 million. These funds were designated to build a student education/classroom building, connect the main campus to Fuquay-Varina's waste water treatment plant, construct a parking deck at the Health Education Campus, and renovate and repair existing facilities. During the summer of 1994, construction began on the student education/classroom building, and it was opened on December 3, 1996.

In January 1994, Wake Tech acquired 132 acres of land on Highway 401 North for a site for a northeast Wake County campus. This campus will serve the residents of northern Wake County. Wake Tech was designated a multi-campus college by the State Board of Community Colleges on February 16, 1996.

After a two-year in-depth self-study and an on-site visit by collegiate peers from across the southeastern United States in March 1995, Wake Tech's accreditation to award the associate degree was reaffirmed by the Commission on Colleges of the Southern Association of Colleges and Schools for another ten years.

In the fall of 1997, Wake Tech, along with the other 57 colleges of the North Carolina Community College System, converted from the quarter system to the semester system.

On June 19, 1998, the State Board of Community Colleges approved Wake Tech's request to change the Allied Health Center to the Health Sciences Campus.

In 2001 Wake Tech purchased 12 acres adjacent to Tech Road (SR 2811) and the US 401 South Main Campus for the construction of additional parking spaces for faculty, staff and students.

In 2002 Wake Tech along with several other community colleges (Edgecombe, Johnston, Nash, Wayne, and Wilson) opened the eastern North Carolina Plastics Technology Center in Zebulon (Wake County). This 8,000 square foot building will house the specialized laboratory courses associated with the Manufacturing Technology/Plastics Program at each of these six institutions.

FACILITIES GROWTH

When Wake Tech opened in 1963, there was one building of 40,795 square feet on a 30.8 acre tract. This building, named in honor of W. W. Holding, a long-time member of the Wake County Board of County Commissioners, was twice enlarged to its present size of 43,348 square feet.

In 1966-67, a maintenance shop and a laboratory building of 8,990 square feet were added to the campus. Additional property was purchased between 1968 and 1972, which increased the campus size to 76.64 acres.

In 1968, the business education building of 22,540 was constructed and named in honor of Leo Pucher, the College's first Board of Trustees Chairman who was also instrumental in founding the College. Also, vocational laboratories were expanded in 1968 and a 36,405 square-foot addition, which was named in honor of Dr. I. E. Ready who was Director of the Department of Community Colleges, was completed.

Two buildings and approximately 3.5 acres adjacent to Wake Medical Center were dedicated in 1972 by the Wake County Commissioners for health education. Subsequently, a power mechanics laboratory building was completed in 1974 on the main campus.

By 1975, a student services building of 28,066 square feet was constructed for the rapidly increasing student body. This facility was named in honor of Robert W. LeMay who served as President from 1966 until 1979.

Maintenance and storage facilities were added in 1980.

The technical education building, occupied in 1982, provides 40,860 square feet of classroom, laboratory and auditorium space for the conduct of technical education.

The College continued to grow with a 8,320 square-foot microelectronics laboratory addition completed in early 1984.

A mechanical technology building was completed in 1987. In approximately 16,980 square feet of space, this building provides space for a machine shop, two automation/robotics laboratories, and three classrooms.

In late 1988, construction was completed on a 84,000 square-foot library education building. This building features a 28,000 square-foot library with study rooms, drafting and typing labs; an enlarged audiovisual area with a new studio and two darkrooms; two architectural drafting labs; and 36 additional classrooms.

The 1990-91 school year was a busy one for campus construction. A 16,600 square-foot child care center was completed. It includes classrooms, offices, child care areas, and a full-service kitchen. Also, a 32,000 square-foot health education building that houses a library, offices, classrooms, and laboratories was completed. Additional parking was provided for both facilities.

In August 1993, the College, with the assistance of a \$100,000 gift from the News and Observer Foundation, opened the News and Observer Adult Education Center. Located on Capital Boulevard, the Center provides a home for the College's basic skills program, one of the largest in the North Carolina Community College System, and is also the headquarters for Wake Tech's Small Business Center. The 21,545 square-foot leased building, previously occupied by Hardbarger Business College, includes 12 classrooms, three computer labs, a student lounge, ten offices, a seminar/conference room, and a full resource center with individualized learning materials.

In 1996, Wake Tech opened a parking deck at the Health Sciences Campus and a 110,000 square-foot Student Education building on Main Campus. The Student Education building houses the Hotel and Restaurant Management and Culinary Arts programs and the kitchens and other facilities necessary for those programs, a conference center, and new cafeteria.

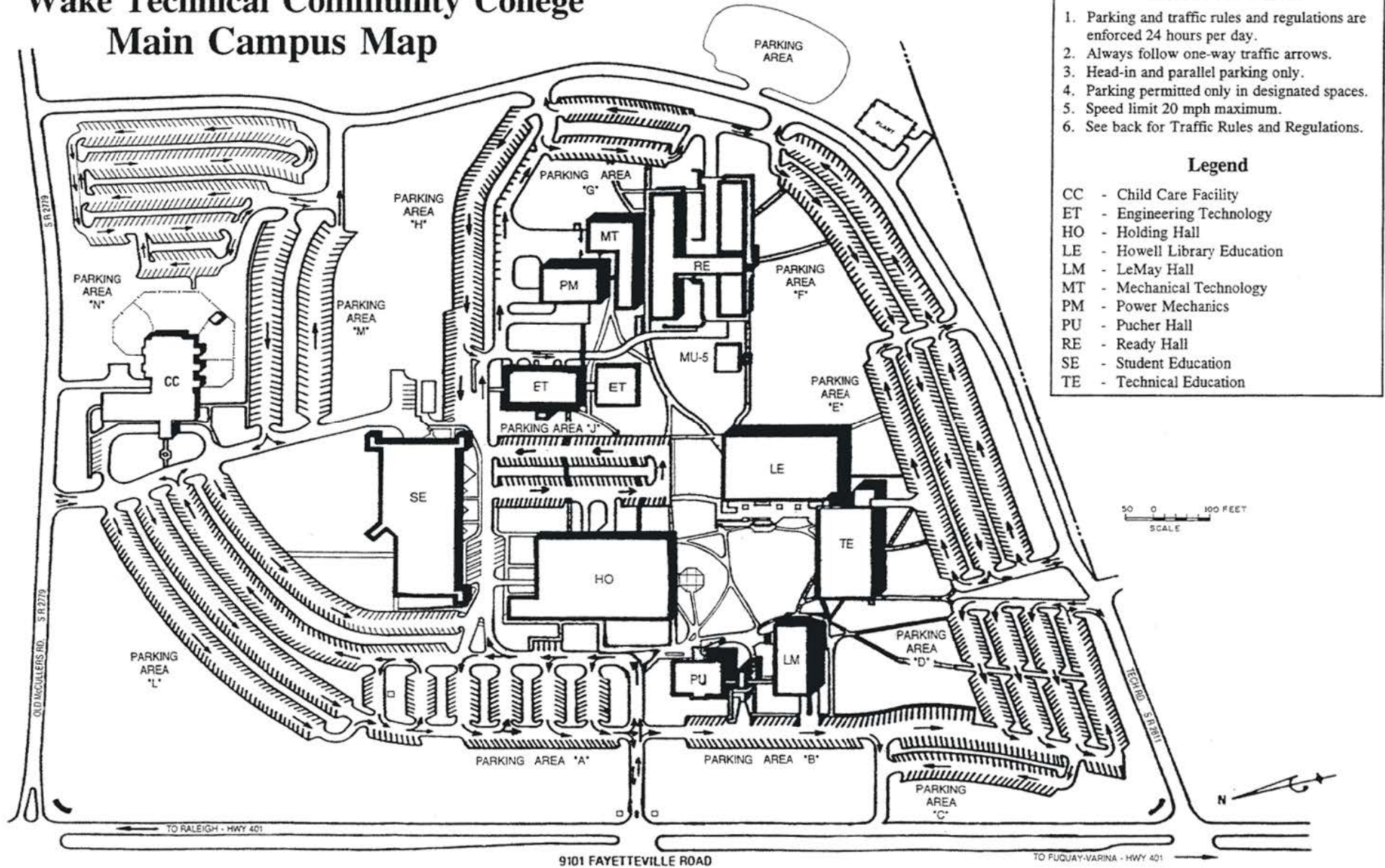
During the summer of 1998, the College purchased the Wells Furniture Company property at the corner of U.S. 401 south and Tech Road (SR 2811). This adds 14,200 square feet to the College's facilities inventory.

The College currently owns 509,779 gross square feet (exterior wall measurement), of which 22,260 is leased and 363,626 square feet are assignable to, or available for assignment to, an occupant or specific use.

In 2001 Wake Tech purchased 12 acres and constructed additional parking spaces adjacent to Tech Road (SR 2811) behind the Wells Furniture Company property.

In 2002 Wake Tech along with several other community colleges (Edgecombe, Johnston, Nash, Wayne, and Wilson) opened the Eastern North Carolina Plastics Technology Center in Zebulon (Wake County). This 8,000 square foot building will house the specialized laboratory courses associated with the Manufacturing Technology/Plastics Program at each of these six institutions.

Wake Technical Community College Main Campus Map



Parking and Traffic

1. Parking and traffic rules and regulations are enforced 24 hours per day.
2. Always follow one-way traffic arrows.
3. Head-in and parallel parking only.
4. Parking permitted only in designated spaces.
5. Speed limit 20 mph maximum.
6. See back for Traffic Rules and Regulations.

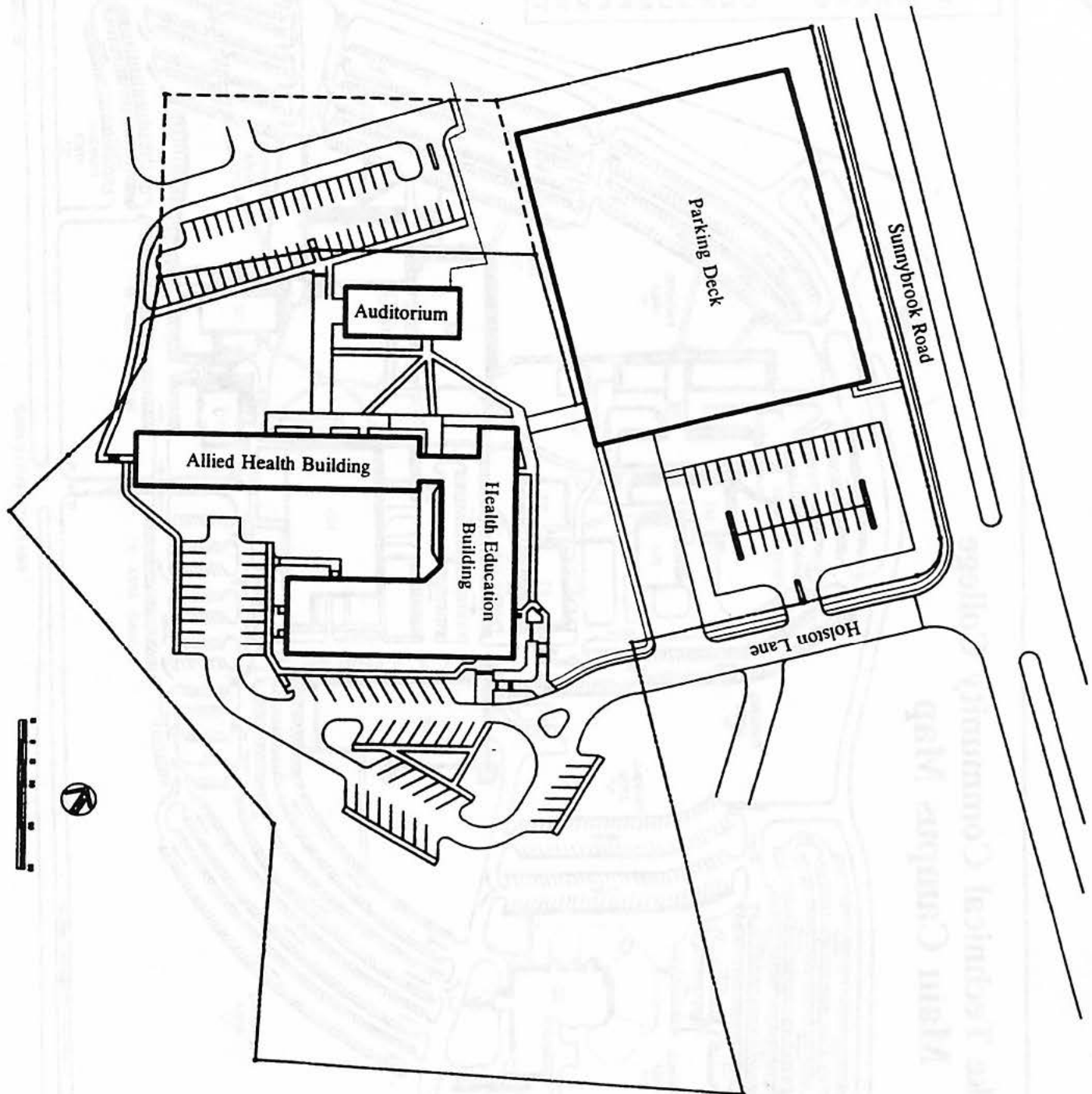
Legend

CC	- Child Care Facility
ET	- Engineering Technology
HO	- Holding Hall
LE	- Howell Library Education
LM	- LeMay Hall
MT	- Mechanical Technology
PM	- Power Mechanics
PU	- Pucher Hall
RE	- Ready Hall
SE	- Student Education
TE	- Technical Education

Wake Technical Community College

Health Sciences Campus Plan

Raleigh, North Carolina



MEMBERS OF THE BOARD OF TRUSTEES

	<u>Beginning of Term</u>	<u>End of Term</u>
** Lide Cooke Anderson	July 1993	June 2001
Robert J. Barker	June 1995	June 2001
Doris M. Burke	June 2000	June 2004
Johnny I. Farmer	October 1995	June 2003
Barbara T. Flood	July 1990	June 2001
George N. Hamrick	June 1998	June 2002
Henry C. Knight	June 1998	June 2002
Harvey L. Montague	July 1996	June 2004
Joy E. Paige	July 1999	June 2003
* Don H. Perry	January 1993	June 2002
James O. Roberson	July 1996	June 2004
James R. Talton, Jr.	October 2001	June 2003
President, Student Government Association		

FORMER MEMBERS OF THE BOARD OF TRUSTEES

**/*	Lawrence E. Allen, Sr.	July 1975	June 1995
/	William D. Ashley	November 1965	June 1973
	Joseph S. Ashworth	July 1989	February 1995
***	Thomas R. Ashworth	June 1977	June 1989
***	W. W. Balentine	October 1963	June 1965
	M. Grant Batey, Sr.	July 1981	June 1990
***	A. L. Becker	September 1967	June 1975
	David B. Bell, Jr.	July 1985	June 1996
***	W. Jennings Booth, Sr.	August 1975	September 1986
	Ralph G. Brashear	October 1979	June 1985
	Joan H. Burkhardt	July 1990	June 1998
**	Donald H. Carpenter	August 1971	June 1979
	Harry K. Clark, II	February 1974	November 1978
***	F. Roland Danielson	July 1977	September 1979
	C. P. Dean	November 1965	June 1977
	Paul A. DelaCourt	August 1967	June 1975
***	Anthony DeLisse	February 1965	June 1977
***	W. G. Enloe	December 1965	June 1966
***	Emol A. Fails	January 1976	May 1978
	Ralph E. Forrest	June 1978	June 1991
/	Mary M. Gentry	August 1971	June 1987
	William T. Graham	July 1995	June 1999

***	T. M. Grimes	October 1963	June 1971
	W.H. (Buddy) Holding	July 1979	June 1992
	Joseph Q. Holliday	September 1967	June 1977
***	William W. Johnson	October 1963	June 1967
	Walter M. Keller	February 1987	June 1995
	John W. Liles, Jr.	August 1966	June 1967
	E. A. Loeser	November 1965	December 1966
	Paul M. Maultsby	October 1995	October 2001
	Douglas Y. Perry	July 1969	June 1990
	Hal C. Perry	July 1965	April 1969
**	Robert A. Pittillo, Jr.	December 1963	June 1967
*/***	Leo E. Pucher	October 1963	June 1979
	Phillip O. Redwine	January 1970	June 1977
***	Carter S. Schaub	October 1963	June 1973
	Lee C. Smith	November 1965	August 1966
	Melba T. Sparrow	July 1987	April 1993
	Jack M. Stancil	July 1996	June 2000
*	James P. Swindell	July 1977	June 1997
	William F. Troxler	July 1979	June 1987
	Harold H. Webb	July 1973	June 1981
	Willi T. Webb	July 1991	June 1995
	James C. Wheeler	July 1990	December 1992
***	C. V. Whitley	October 1963	June 1965
	Cliffornia Wimberley	January 1979	June 1990
***	W.L. Woodard	July 1967	June 1975

*Chairman

**Vice-Chairman

***Deceased

WAKE TECHNICAL COMMUNITY COLLEGE FOUNDATION, INC.

Wake Technical Community College Foundation is a 501 (c) (3) nonprofit corporation established to serve as a conduit for a strong financial partnership with the private sector, supporting the community mission of Wake Technical Community College with gifts of cash and in-kind contributions of equipment and services that enhance the College's ability to fulfill its mission.

A 26-member Board of Directors comprised of community and business leaders in the Triangle area promote and administer a variety of funds from the private sector, including:

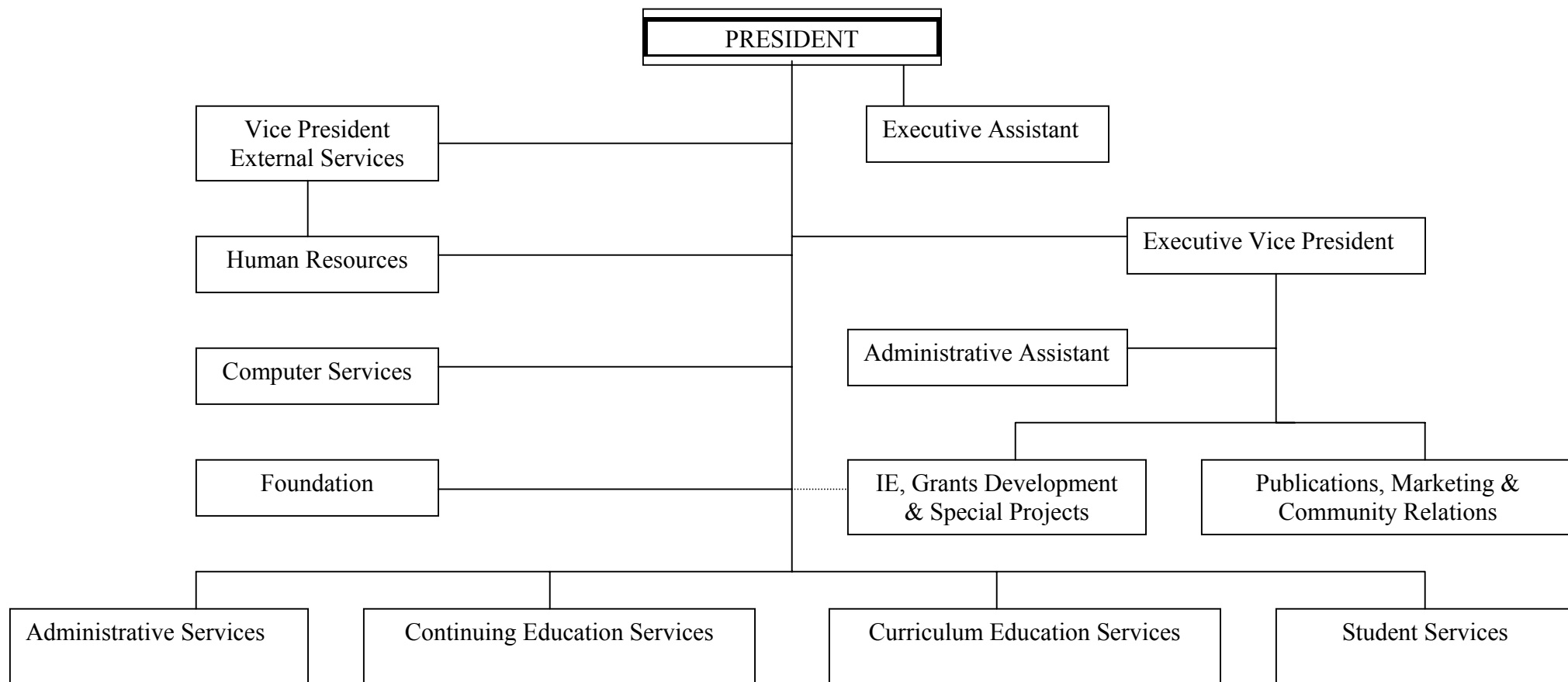
The Wake Tech Fund is the general fund that supports programs that receive limited or no support from traditional tax revenues, including institutional opportunities, student scholarships, financial aid grants, professional development needs of faculty and staff, the acquisition of state-of-the-art equipment and other areas that elevate the College's service role in the community to a greater prominence.

Donor-Restricted Funds benefit the interests of the donor as well as the College by providing restricted gifts to specific academic programs and scholarships that accommodate and address certain employment needs.

Endowment Funds are often established through various estate or major gifts which qualify for special tax consideration, creating permanent funds from which the interest income can be allocated to a specific area or serve as a source of supplemental revenues to state and local taxation.

Gifts-in-Kind from business and industry enhance and improve the quality of Wake Tech's instructional programs and labs with equipment that keeps technology current and instruction up to industry standards.

Since 1988, corporations, businesses, alumni, friends, trustees and employees have strengthened Wake Tech's programs with cash and noncash gifts to Wake Technical Community College Foundation totaling nearly \$5 million.



MEMBERSHIPS, APPROVALS, AND ACCREDITATIONS

The College Is A Member Of:

American Association of Collegiate Registrars and Admissions Officers
American Association of Community Colleges
American Association for Higher Education
American Technical Education Association
Association of Collegiate Schools of Architecture
Association of community College Trustees
Association on Higher Education and Disability
Carolinas Association of Collegiate Registrars and Admissions Officers
Chamber of Commerce--Apex
Chamber of Commerce--Cary
Chamber of Commerce--Fuquay-Varina
Chamber of Commerce--Garner
Chamber of Commerce--Knightdale
Chamber of Commerce--Morrisville
Chamber of Commerce--Raleigh
College and University Mail Services
College Board
College News Association of the Carolinas
Community College Leadership Institute
Community Education Network
Cooperative Education Association, Inc.
Council on Hotel, Restaurant, and Institutional Education
National Alliance of Community and Technical Colleges
National Association for Adults with Special Learning Needs
National Association for Foreign Student Affairs
National Association of Colleges and Employers
National Association for Student Financial Aid Administrators
National Commission for Cooperative Education
National Council for Marketing and Public Relations
National Council for Research and Planning
National Council for Student Development
National Initiative for Leadership and Institutional Effectiveness
National League for Nursing
National Prime Users Group
National Restaurant Association
National Safety Council
North Carolina Association of Colleges and Universities
North Carolina Association of Community College Business Officials
North Carolina Association of Community College Trustees
North Carolina Association of Coordinators of Veterans Affairs
North Carolina Association on Higher Education and Disability
North Carolina Bar Association
North Carolina Citizens for Business and Industry

North Carolina Restaurant Association
Project Seraphim
Raleigh-Wake Personnel Association
Society for Human Resource Management
Southeastern Association of Colleges and Employers
Southeastern Testing Association
Southern Association of Collegiate Registrars and Admissions Officers
Southern Association of Community, Junior, and Technical Colleges
Travel Council of North Carolina
Wake County Interagency Council for the Homeless
Wake County Interagency Council for Youth

The College Is Approved By:

Division of Vocational Rehabilitation
Insurance Agents Pre-Licensing Education Program
North Carolina Department of Insurance
North Carolina Office of Emergency Services
North Carolina Real Estate Licensing Board
North Carolina State Approving Agency for Veterans Education and Training
North Carolina State Board of Community Colleges

The College Is Accredited By:

Wake Technical Community College is accredited by the Commission on Colleges of the Southern Association of Colleges and Schools (1866 Southern Lane, Decatur, Georgia 30033-4097; Telephone Number (404) 679-4501 to award the associate degree.*

North Carolina Criminal Justice Education and Training Standards Commission

The College Has Certain Programs Accredited By:

Accreditation Board for Engineering Technology**
Commission on Dental Accreditation, American Dental Association***
Committee on Allied Health Education and Accreditation:
 American Association of Medical Assistant's Endowment
Joint Review Committee on Education in Radiologic Technology
 National Accrediting Agency for Clinical Laboratory Sciences
North Carolina Board of Nursing
The Medical Assisting Program is accredited by the Commission on Accreditation of Allied Health Education Programs (CAAHEP); on recommendation of the Committee on Accreditation for Medical Assistant Education****

*When it is appropriate to refer to the status between Wake Technical Community College and the Commission on Colleges in catalogs, brochures, and advertisements, the following statement is to be used: **"Wake Technical Community College is accredited by the Commission on Colleges of the Southern Association of Colleges and Schools (1866 Southern Lane, Decatur, Georgia 30033-4097; Telephone Number (404) 679-4501) to award the associate degree."**

**Five of Wake Technical Community College's Engineering Technology curriculums are nationally accredited by the Technology Accreditation Commission of the Accreditation Board for Engineering and Technology, Inc. The programs are Automation/Robotics Technology, Civil, Computer, Electronics and Mechanical Engineering Technology.

***The program in Dental Assisting is accredited by the Commission on Dental Accreditation of the American Dental Association.

****aka The Curriculum Review Board of the American Association of Medical Assistants' Endowment (AAMAE).

AREAS OF STUDY

ARTS AND SCIENCES

A10100 - Associate in Arts Degree

(for transfer to university liberal arts programs)

A10400 - Associate in Science Degree

(for transfer to university science and engineering programs)

A10300 - Associate in General Education Degree

BUSINESS EDUCATION

Associate in Applied Science Degree:

A25100 - Accounting

A25120 - Business Administration

A2512C - Business Administration/Human Resources Management

A55180 - Criminal Justice Technology

A55200 - Culinary Technology

A55220 - Early Childhood Associate

A25240 - Hotel and Restaurant Management

A25310 - Medical Office Administration

A25360 - Office Systems Technology

A2536A - Office Systems Technology/Legal

Diploma:

D55220A - Early Childhood Associate

D25360A - Office Systems Technology

Certificate:

C25120A - Business Administration: Customer Service

C25120A - Business Administration: Sales Development

C2512CA - Business Administration: Human Resources Management

C55200A - Culinary Technology

C55220B - Early Childhood Associate

C25360B - Office Systems Technology: Word Processing

C25400A - Real Estate

C25420 - Real Estate Appraisal

ENGINEERING TECHNOLOGY

Associate in Applied Science Degree:

A40100 - Architectural Technology

A40120 - Automation/Robotics Technology

A40140 - Civil Engineering Technology

A40160 - Computer Engineering Technology

A40200 - Electronics Engineering Technology
A4020A - Electronics Engineering Technology/Instrumentation
A20140 - Environmental Science Technology
A40240 - Industrial Engineering Technology
A20180 - Industrial Pharmaceutical Technology
A40260 - Landscape Architecture Technology
A40300 - Manufacturing Engineering Technology
A5032A - Manufacturing Technology/Plastics
A40320 - Mechanical Engineering Technology
A40360 - Scientific Graphics Technology
A40380 - Surveying Technology
A40400 - Telecommunications and Network Engineering Technology

Certificate:

C40100A - Architectural Technology: Architectural CAD
C40120A - Automation/Robotics Technology: Industrial Controls
C40160B - Computer Engineering Technology: C Language Programming
C40160C - Computer Engineering Technology: Personal Computer Specialist
C40160A - Computer Engineering Technology: UNIX System Management and Programming
C40200A - Electronics Engineering Technology: Basic Electronics
C40240A - Industrial Engineering Technology: Industrial Management
C40400 - Telecommunications and Network Engineering Technology: Basic
Telecommunications Electronics
C40400B - Telecommunications and Network Engineering Technology: Data Networking
Technology
C40400C - Telecommunications and Network Engineering Technology: Telecommunications
Switching

COMPUTER INFORMATION SYSTEMS

Associate in Applied Science Degree:

A25130 - Computer Programming
A25260 - Information Systems
A2526B - Information Systems: Helpdesk and Support Technology
A25290 - Internet Technologies
A25340 - Networking Technology

Certificate:

C25130C - Computer Programming: C++ Programming
C25130D - Computer Programming: Oracle Programming
C25130A - Computer Programming: Internet Programming
C25130B - Computer Programming: Visual Basic Programming
C25260F - Information Systems: Database Management
C25260C - Information Systems: Graphics Design
C25260G - Information Systems: Hardware Troubleshooting/Repair
C25260D - Information Systems: Networking
C25260A - Information Systems: Office Applications
C25260E - Information Systems: Spreadsheet Management

C25260B - Information Systems: Technical Word Processing
C25260H - Information Systems: Web Developer
C25340C - Networking Technology: CISCO Certificate
C25340D - Networking Technology: Internet Administration
C25340F - Networking Technology: Linux/Red Hat Administration
C25340A - Networking Technology: MCSE
C25340B - Networking Technology: Novell Administration
C25340E - Networking Technology: SQL Server Administration

HEALTH SCIENCES

Associate in Applied Science Degree:

A45120 - Associate Degree Nursing
A45340 - Emergency Medical Science
A45380 - Human Services Technology
A4538A - Human Services Technology/Developmental Disabilities
A4538E - Human Services Technology/Substance Abuse
A45420 - Medical Laboratory Technology
A45700 - Radiography

Diploma:

D45200 - Computed Tomography and Magnetic Resonance Imaging
D45240 - Dental Assisting
D45400A - Medical Assisting
D45740 - Surgical Technology

Certificate:

C45200A - Computed Tomography Technology
C4538EA - Human Services Technology/Substance Abuse
C45200B - Magnetic Resonance Imaging
C45480 - Nursing Assistant
C45600 - Phlebotomy
C55280 - General Occupational Technology

VOCATIONAL TECHNOLOGY

Associate in Applied Science Degree:

A35220 - Electrical/Electronics Technology
A50120 - Electronics Servicing Technology
A6024BZJ - HEATT/John Deere
A6024B - Heavy Equipment and Transport Technology/Construction Equipment Systems
A50240 - Industrial Maintenance Technology
A50300 - Machining Technology
A5030A - Machining Technology/Tool, Die and Mold Making
A50340 - Mechanical Drafting Technology

Diploma:

D35100A - Air Conditioning, Heating and Refrigeration Technology

D60160A - Automotive Systems Technology
D35220A - Electrical/Electronics Technology
D50120A - Electronics Servicing Technology
D6024BA - Heavy Equipment and Transport Technology/Construction Equipment Systems
D50240A - Industrial Maintenance Technology
D50300A - Machining Technology
D50340A - Mechanical Drafting Technology
D35300 - Plumbing
D50420A - Welding Technology

Certificate:

C35100B - Air Conditioning, Heating and Refrigeration Technology
C55120 - Basic Law Enforcement Training
C35220C - Electrical/Electronics Technology: Commercial Wiring Methods
C35220B - Electrical/Electronics Technology: Residential Wiring Methods
C60224BB - Heavy Equipment and Transport Technology/Construction Equipment Systems:
Hydraulics, Engines and Transmissions
C6024BC - Heavy Equipment and Transport Technology/Construction Equipment Systems:
Fuel Injection, Electrical and Electronics
C50240B - Industrial Maintenance Technology
C50300B - Machining Technology
C5030A - Machining Technology/Tool, Die and Mold Making: Mold Making
C50340B - Mechanical Drafting Technology
C35300B - Plumbing: Modern Plumbing, Codes and Blueprint Reading
C35300A - Plumbing: Plumbing Applications and Diagrams
C50420B - Welding Technology

COLLEGE COMMITTEES

Executive Council

President, Chairman
Vice Presidents
Administrative Employees who report to the President
Staff Council President
Faculty Association President

Curriculum Education Services Council

Vice President of Curriculum Education Services, Chairman
Curriculum Education Deans
Dean of Evening Programs

Continuing Education Services Council

Vice President of Continuing Education Services, Chairman
Continuing Education Deans
Continuing Education Directors, Coordinators, and Instructional Supervisors are invited and encouraged to attend meetings.

Planning Council

President, Chairman
Executive Council
Faculty Association Representatives
Staff Council Representative
Basic Skills Representatives

Staff Council

Staff Council President
One representative for every 10 eligible staff employees in a given service area

Drug and Substance Abuse Council

Department of Criminal Justice faculty member, Chairman
Human Resources Manager
Dean of Students
Manager of Security
One Counselor
One representative from Continuing Education Division
One faculty member from each Curriculum Division

Curriculum Committee

Vice President of Curriculum Education Services, Chairman
Curriculum Education Deans
The Registrar
Director of Cooperative Education

Educational Support Services Advisory Committee

Dean, Educational Support Services, Chairman
Director of Library Services
Health Sciences Librarian
Head of Individualized Learning Center
Head of English as a Foreign Language
Director of Audiovisual
One Representative from Continuing Education
One Representative from Howell Library
One full-time student appointed by the Student Government Association President
Six full-time faculty members--one representing each academic division

Health, Safety, and Security Committee

Manager of Security, Chairman
Facilities Manager
Dean of Students
Dean of Evening Programs
Business Manager
One student recommended by the Student Government Association
Two instructors from the Main Campus
One instructor from the Health Education Campus
One Representative recommended by the Continuing Education Services Council

Institutional Effectiveness (IE) Advisory Committee

Dean of IE, Grants Development and Special Projects, Chairman
Curriculum Education Services SGA President
Continuing Education
Student Services
Administrative Services
Adult Education Center Campus
Health Science Campus Representative
Faculty Association President
Staff Council Member

Instructional Computer Services Advisory Committee

Vice President of Computer Services, Chairman
Vice President of Curriculum Education Services
Vice President of Continuing Education Services
Dean of Computer Information Systems
Dean of Engineering Technology

Faculty Association

One faculty member serves as President, Vice President, Secretary

The Faculty Association is open to all Wake Technical Community College full-time faculty

WAKE TECHNICAL COMMUNITY COLLEGE
FUNDING GROWTH LAST 10 YEARS
Educational and General Expenditures by source of Funds

Year	State	%	County	%	Other	%	Total
1992-93	16,642,145	72	4,917,000	21	1,553,940	7	23,113,085
1993-94	16,970,124	71	5,032,970	21	1,876,193	8	23,879,287
1994-95	18,414,785	73	5,087,554	20	1,665,442	7	25,167,781
1995-96	18,986,857	73	4,909,382	19	2,011,909	8	25,907,329
1996-97	19,817,427	71	5,886,100	21	2,128,826	8	27,832,353
1997-98	21,128,693	71	6,435,000	21	2,333,350	8	29,987,043
1998-99	23,827,482	72	6,800,000	20	2,594,776	8	33,222,258
1999-00	27,968,018	72	7,202,000	19	3,383,705	9	38,553,723
2000-01	31,730,476	74	7,810,000	18	3,496,031	8	43,036,507
2001-02	34,335,261	72.4	8,495,000	17.9	4,618,009	9.7	47,448,270

Office of Research (Does not include Capital and Construction Budgets)

MARCH 2002

Source: Wake Technical Community College Controller's Office Current Operating Budget

**SERVICE AREA:
WAKE COUNTY**

SOCIOECONOMIC AND DEMOGRAPHIC INDICATORS FOR WAKE COUNTY

LAND AREA IN SQUARE MILES	833.98
Density (Persons per square mile)	759.35

PERSONS (July 2000)

Total County Population	633,288	
Total Incorporated Population	463,037	73.11%
Total Unincorporated Population	170,251	26.89%
18 and Over	473,917	

MUNICIPAL POPULATION, JULY 2000

Municipality	2000 Census	July 2000
APEX	20,212	20,473
CARY	94,536	95,386
FUQUAY VARINA	7,898	8,023
GARNER	17,757	18,163
HOLLY SPRINGS	9,192	9,281
KNIGHTDALE	5,958	6,014
MORRISVILLE	5,208	5,255
RALEIGH	276,093	278,402
ROLESVILLE	907	915
WAKE FOREST	12,588	12,758
WENDELL	4,247	4,285
ZEBULON	4,046	4,082

OFFICE OF RESEARCH/SOURCE: N.C. OFFICE OF STATE BUDGET, PLANNING, AND MANAGEMENT/AUGUST 2001

STUDENTS

WAKE TECHNICAL COMMUNITY COLLEGE

UNDUPLICATED HEADCOUNT

LAST 10 YEARS

Year	Continuing Education	Curriculum	Total
1990-1991	25,413	10,983	36,396
1991-1992	26,421	11,805	38,226
1992-1993	28,073	11,759	39,832
1993-1994	30,129	11,796	41,925
1994-1995	32,315	12,228	44,543
1995-1996	31,948	11,988	43,936
1996-1997	32,606	11,622	44,228
1997-1998	33,165	10,905	44,070
1998-1999	38,432	12,083	50,515
1999-2000	35,808	13,343	49,151
2000-2001	34,154	14,214	48,368

OFFICE OF RESEARCH Note: State fund reversions caused classes to be cancelled in 1990-91.
MARCH 2002

SOURCE: ANNUAL STATISTICAL REPORTS, 2002 FACT BOOK, SYSTEM ANNUAL REPORTS, NCCCS

WAKE TECHNICAL COMMUNITY COLLEGE

AVERAGE ANNUAL FULL TIME EQUIVALENT (FTE)

Academic Years	FTE
1990-1991	5,347
1991-1992	5,639
1992-1993	5,884
1993-1994	5,732
1994-1995	5,809
1995-1996	5,908
1996-1997	5,668
1997-1998	6,848
1998-1999	7,745
1999-2000	8,292
2000-2001	8,550

AVERAGE COST PER FTE ANALYSIS YEAR ENDING JUNE 30, 1999

	<u>Wake Tech</u>	<u>System</u>
General Administration	\$ 128.92	244.88
Instruction-Curriculum	2,603.99	2,954.88
Instruction Non-Curriculum	2,847.73	3,161.75
Learning Resources	80.87	129.86
Student Services	370.39	328.25
Plant Operation & Maintenance	0 .00	3.30
General Institution	221.85	392.97

OFFICE OF RESEARCH
MARCH 2002

SOURCE: (AVERAGE ANNUAL FULL TIME EQUIVALENT) ANNUAL STATISTICAL REPORT, 2000-2001, NCCCS
SOURCE: (AVERAGE COST PER FTE ANALYSIS) NCCCS FACT BOOK 2002

WAKE TECHNICAL COMMUNITY COLLEGE
CURRICULUM FTE LAST 5 YEARS
QUARTER SYSTEM ENDED 1996-1997
SEMESTER SYSTEM BEGAN 1997-1998

Year	Fall	Winter	Spring	Summer
1996-1997	5,034	4,396	4,193	741
1997-1998	2,541	0	2,432	844
1998-1999	2,830	0	2,716	844
1999-2000	3,029	0	2,903	875
2000-2001	3,281	0	3,183	1052

OFFICE OF RESEARCH, NOTE: There is no Winter Term under the Semester System. For an explanation of Semester System FTE, see the Glossary. To compare with the Quarter System, you must add the Fall and Spring Semesters together.

MARCH 2001

SOURCE: WAKE TECHNICAL COMMUNITY COLLEGE REGISTRAR

WAKE TECHNICAL COMMUNITY COLLEGE

STUDENT FINANCIAL AID

2000-2001

GRANTS, GIFT AWARDS SCHOLARSHIP	NUMBER OF STUDENTS	TOTAL DOLLARS	AVERAGE PER RECIPIENT
FSEOG	54	37,867	701
PELL GRANT TOTAL	1,512	2,643,706	1,748
<u>EMPLOYMENT</u>			
FWS	64	72,591	1134
VOCATIONAL REHABILITATION	178	96,176	546
VETERANS ADMINISTRATION	41	17,086	417
JOB TRAINING PARTNERSHIP			
WIA, NAFFA	36	32,830	912
<u>EXTERNAL SOURCES OF AID</u>			
<u>LOANS (STAFFORD)</u>			
SUBSIDIZED	330	647,858	1963
UNSUBSIDIZED	288	760,830	2,642
FPLUS	8	24,353	3,044
NCNESLP	27	36,250	1,343
NCHSM	5	15,000	3,000
NCSIG	17	2,580	152
N.C. COMMUNITY COLLEGE GRANT	253	159,378	630
TOTAL	2813	4,547,505	1,617

Abbreviations used in this report are:

FWS – College Work Study
 FSEOG – Federal Supplemental Education Opportunity Grant
 HPEAA – Health Professions Education Assistance Act
 HSM – Health, Science & Mathematics Student Loan Program
 JTPA – Job Training Partnership Act
 NCLTG – North Carolina Legislative Tuition Grants
 NCSIG – North Carolina Student Incentive Grants
 NESLP – Nurse Education Scholarship Loan Program
 NSP – Nurse Scholars Program
 NTA – Nurse Training Act
 SCSF – State Contractual Scholarship Fund
 SOURCE: NCHED A-10

**WAKE TECHNICAL COMMUNITY COLLEGE
NUMBER OF GRADUATES PER YEAR LAST 5 YEARS
CUMULATIVE TOTAL**

YEAR	DEGREE	DIPLOMA	CERTIFICATE	TOTAL
1996-97	578	121	390	1,089
1997-98	440	80	195	715
1998-99	536	69	322	927
1999-00	561	90	495	1,146
2000-2001	595	95	524	1,214

OFFICE OF RESEARCH
MARCH 2002
SOURCE: WAKE TECHNICAL COMMUNITY COLLEGE REGISTRAR

WAKE TECHNICAL COMMUNITY COLLEGE ADULT HIGH SCHOOL GRADUATES LAST 5 YEARS

YEAR	NUMBER GRADUATES
1996-1997	64
1997-1998	51
1998-1999	42
1999-2000	66
2000-2001	71

GED GRADUATES LAST 5 YEARS

YEAR	NUMBER GRADUATES
1996-1997	513
1997-1998	646
1998-1999	587
1999-2000	642
2000-2001	734

OFFICE OF RESEARCH
MARCH 2002
SOURCE: LEIS REPORT

WAKE TECHNICAL COMMUNITY COLLEGE

PASSING RATES FOR LICENSURE EXAMS

2000-2001

CURRICULUM	NUMBER TESTED	PERCENT PASSED
Nursing	44	98%
BLET	56	88%
Dental Assisting	18	100%
Medical Laboratory Technology		
American Society for Clinical Pathology	2	100%
National Certification Agency for Laboratory Personnel	2	100%
Phlebotomy		
American Society for Clinical Pathology	5	100%
National Certification Agency for Phlebotomy	6	100%
Medical Assisting	22	86%
Emergency Medical Technician (EMT)	208	86%
Real Estate (7/01 - 12/01)	17	71%
Radiography	21	100%
Nursing Assisting	91	100%

OFFICE OF RESEARCH
MARCH 2002
SOURCE: NCCCS Critical Success Factors 2002

GRADUATES BY CURRICULUM

ARTS AND SCIENCES

GRADUATES 2000-2001

A10100 - Associate in Arts Degree (for transfer to university liberal arts programs)	153
A10400 - Associate in Science Degree (for transfer to university science and engineering programs)	42
A10300 - Associate in General Education Degree	5

BUSINESS EDUCATION

Associate in Applied Science Degree:

A25100 - Accounting	17
A25120 - Business Administration	19
A2512C - Business Administration/Human Resources Management	11
A55180 - Criminal Justice Technology	20
A55200 - Culinary Technology	10
A55220 - Early Childhood Associate	6
A25240 - Hotel and Restaurant Management	5
A25360 - Office Systems Technology	10
A2536A - Office Systems Technology/Legal	2
A25310 - Medical Office Administration	4

Diploma:

D55220A - Early Childhood Associate	5
D25360A - Office Systems Technology	3

Certificate:

C25120A - Business Administration: Sales Development	4
C2512CA - Business Administration: Human Resources Management	8
C55220B - Early Childhood Associate	128
C25360B - Office Systems Technology: Word Processing	7
C25400A - Real Estate	0
C25420 - Real Estate Appraisal	0

ENGINEERING TECHNOLOGY

Associate in Applied Science Degree:

A40100 - Architectural Technology	4
A40120 - Automation/Robotics Technology	3
A40140 - Civil Engineering Technology	12
A40160 - Computer Engineering Technology	18
A40200 - Electronics Engineering Technology	9
A4020A - Electronics Engineering Technology/Instrumentation	0

GRADUATES 2000-2001

A20140 - Environmental Science Technology	1
A40240 - Industrial Engineering Technology	6
A20180 - Industrial Pharmaceutical Technology	10
A40260 - Landscape Architecture Technology	4
A40300 - Manufacturing Engineering Technology	6
A5032A - Manufacturing Technology/Plastics	0
A40320 - Mechanical Engineering Technology	2
A40360 - Scientific Graphics Technology	2
A40380 - Surveying Technology	11
A40400 - Telecommunications and Network Engineering Technology	3

Certificate:

C40100A - Architectural Technology: Architectural CAD	17
C40120A - Automation/Robotics Technology: Industrial Controls	0
C40160B - Computer Engineering Technology: C Language Programming	5
C40160C - Computer Engineering Technology: Personal Computer Specialist	4
C40160A - Computer Engineering Technology: UNIX System Management and Programming	6
C40240A - Industrial Engineering Technology: Industrial Management	0

COMPUTER INFORMATION SYSTEMS

Associate in Applied Science Degree:

A25260 - Information Systems	28
A2526B - Information Systems: Helpdesk and Support Technology	8
A25130 - Computer Programming	11
A25340 - Networking Technology	55

Certificate:

C25260A - Information Systems: Applications	1
C25260F - Information Systems: Database Management	2
C25260C - Information Systems: Desktop Publishing	10
C25260G - Information Systems: Hardware Troubleshooting/Repair	13
C25260D - Information Systems: Networking	18
C25260E - Information Systems: Spreadsheet Management	4
C25260B - Information Systems: Technical Word Processing	0
C25130C - Information Systems/Programming: C++Programming	7
C25130D - Information Systems/Programming: Oracle Programming	14
C25130A - Information Systems/Programming: Internet Programming	10
C25130B - Information Systems/Programming: Visual Basic Programming	20

HEALTHSCIENCES

Associate in Applied Science Degree:

A45340 - Emergency Medical Science	13
A45380 - Human Services Technology	6

GRADUATES 2000-2001

A4538A - Human Services Technology/Developmental Disabilities	0
A4538E - Human Services Technology/Substance Abuse	3
A45420 - Medical Laboratory Technology	2
A45120 - Nursing	44
A45700 - Radiography	13

Diploma:

D45240 - Dental Assisting	18
D45400A - Medical Assisting	9

Certificate:

C45480 - Nursing Assistant	4
C45600 - Phlebotomy	10
C55280 - General Occupational Technology	84

VOCATIONAL TECHNOLOGY

Associate in Applied Science Degree:

A35220 - Electrical/Electronics Technology	3
A50120 - Electronic Servicing Technology	2
A6024B - Heavy Equipment and Transport Technology/Construction Equipment Systems	4
A50240 - Industrial Maintenance Technology	0
A50300 - Machining Technology	0
A5030A - Machining Technology/Tool, Die and Mold Making	6
A50340 - Mechanical Drafting Technology	2

Diploma:

D35100A - Air Conditioning, Heating and Refrigeration Technology	8
D60160A - Automotive Systems Technology	22
D35220A - Electrical/Electronics Technology	0
D50120A - Electronic Servicing Technology	2
D6024BA - Heavy Equipment and Transport Technology/Construction Equipment Systems	7
D50240A - Industrial Maintenance Technology	1
D50300A - Machining Technology	0
D50340A - Mechanical Drafting Technology	3
D35300 - Plumbing	3
D50420A - Welding Technology	3

Certificate:

C35100B - Air Conditioning, Heating and Refrigeration Technology	12
C55120 - Basic Law Enforcement Training	23
C35220C - Electrical/Electronics Technology: Commercial Wiring Methods	3
C35220B - Electrical/Electronics Technology: Residential Wiring Methods	11

GRADUATES 2000-2001

C60224BB - Heavy Equipment and Transport Technology/Construction Equipment Systems: Hydraulics, Engines and Transmissions	1
C6024BC - Heavy Equipment and Transport Technology/Construction Equipment Systems: Fuel Injection, Electrical and Electronics	0
C50300B - Machining Technology	3
C5030A - Machining Technology/Tool, Die and Mold Making: Mold Making	0
C50340B - Mechanical Drafting Technology	8
C35300B - Plumbing: Modern Plumbing, Codes and Blueprint Reading	0
C35300A - Plumbing: Plumbing Applications and Diagrams	0
C50420B - Welding Technology	1

2001 Average Starting Salaries for A.A.S. Degree

Business Education Division	Average Starting	Range	# Return
Accounting	\$ 30,400	\$ 28,000-42,000	5
Business Administration	31,500	22,000-47,000	6
Hotel/Restaurant Management	30,000	29,000-31,000	1
Culinary Technology	23,333	20,000-26,000	3
Early Childhood Associate	22,000	18,000-24,000	3
Criminal Justice	24,000	24,000-24,000	2
Office Systems Technology	22,000	21,000-23,000	1
Office Systems/Medical	24,000	23,000-25,000	1
Computer& Information Technology Division			
Information Systems Technology	34,000	28,000-44,000	5
Computer Programming	38,333	28,000-47,000	3
Networking Technologies	38,166	26,000-47,000	12
Engineering Technology Division			
Architectural Technology	28,000	24,000-32,000	2
Civil Engineering Technology	26,000	20,000-36,000	3
Computer Engineering Technology	34,000	32,000-36,000	2
Electronics Engineering Technology	32,000	28,000-34,000	3
Surveying Technology	37,000	28,000-47,000	2
Industrial Engineering Technology	28,000	27,000-29,000	1
Industrial Pharmaceutical Technology	38,000	34,000-42,000	2
Mechanical Engineering Technology	30,000	29,000-31,000	1
Landscape Architectural Technology	25,000	24,000-26,000	2
Health Sciences Division			
Medical Laboratory	31,000	28,000-34,000	2
Nursing	33,875	20,000-47,000	24
Radiologic Technology	32,200	18,000-40,000	10
Emergency Medical Science	32,800	28,000-42,000	5
Vocational Education Division			
Machining Technology	40,000	39,000-41,000	1
Heavy Equipment	26,666	20,000-32,000	3
Electrical/Electronics	42,500	38,000-47,000	2
Mechanical Drafting Technology	36,000	34,000-38,000	2

Unrelated and part-time are not calculated in ranges and averages.

Figures taken from 2001 Graduate Placement Survey - check with Placement Office if questions - 662-3376.

2001 Average Starting Salaries for Diploma's or Certificates (C)

Health Sciences Division	Average Starting	Range	# Return
Dental Assisting	23,000	20,000-26,000	8
Medical Assisting (C)	20,000	19,000-21,000	1
Phlebotomy (C)			
Vocational Education Division			
Automotive Systems Technology	21,000	16,000-26,000	4
Plumbing	24,000	23,000-25,000	1

Curriculums not represented had 0% return for salary information.

Unrelated and part-time are not calculated in ranges and averages.

Figures taken from 2001 Graduate Placement Survey - check with Placement Office if questions - 662-3376.

PERCENT OF 1998-99 COLLEGE TRANSFER STUDENTS WITH A
GPA OF >= 2.0 AFTER TWO SEMESTERS AT A UNC INSTITUTION

INSTITUTION	TOTAL FTE	24 or More Semester Hours		Associate Degree Recipient		Total	
		Number	Percent >=2.0	Number	Percent >=2.0	Number	Percent >=2.0
Alamance CC		**	**	**	**	**	**
Asheville-Buncombe TCC		68	92.7%	24	95.8%	92	93.5%
Beaufort County CC		18	77.8%	**	**	25	76.0%
Bladen CC		**	**	17	82.4%	17	82.4%
Blue Ridge CC		37	89.2%	**	**	41	90.3%
Brunswick CC		21	66.7%	11	81.8%	32	71.9%
Caldwell CC & TI		108	83.3%	28	92.9%	136	85.3%
Cape Fear CC		261	72.8%	89	82.0%	350	75.1%
Carteret CC		16	75.0%	**	**	19	78.9%
Catawba Valley CC		88	83.0%	12	66.7%	100	81.0%
Central Carolina CC		44	86.4%	16	81.3%	60	85.0%
Central Piedmont CC		230	78.7%	73	84.9%	303	80.2%
Cleveland CC		23	73.9%	**	**	30	80.0%
Coastal Carolina CC		153	84.3%	63	84.1%	216	84.2%
College of The Albemarle		51	94.1%	37	97.3%	88	95.4%
Craven CC		107	78.5%	30	63.3%	137	75.2%
Davidson County CC		**	**	21	71.4%	21	71.4%
Durham TCC*		150	75.3%	20	100.0%	170	78.2%
Edgecombe CC		14	71.4%	**	**	17	70.6%
Fayetteville TCC		91	87.9%	38	89.5%	129	88.4%
Forsyth TCC		88	71.6%	13	100.0%	101	75.3%
Gaston College*		116	71.6%	61	75.4%	177	72.9%
Guilford TCC		62	77.4%	21	85.7%	83	79.5%
Halifax CC		17	70.6%	**	**	17	70.6%
Haywood CC		22	77.3%	13	92.3%	35	82.9%
Isothermal CC		41	85.4%	19	100.0%	60	90.0%
James Sprunt CC		20	75.0%	11	63.6%	31	71.0%
Johnston CC		62	74.2%	13	76.9%	75	74.7%
Lenoir CC		85	81.2%	26	84.6%	111	82.0%
Martin CC		11	81.8%	**	**	15	80.0%
Mayland CC		16	87.5%	**	**	24	87.5%
McDowell TCC		19	68.4%	12	83.3%	31	74.2%
Mitchell CC		51	76.5%	12	100.0%	63	81.0%
Montgomery CC		**	**	**	**	**	**
Nash CC		57	77.2%	18	94.4%	75	81.3%
Pamlico CC		**	**	**	**	**	**
Piedmont CC		**	**	**	**	16	93.8%
Pitt CC		157	76.4%	26	88.5%	183	78.1%
Randolph CC		44	84.1%	**	**	48	81.3%
Richmond CC		29	69.0%	**	**	34	70.6%
Roanoke-Chowan CC		**	**	**	**	**	**
Robeson CC		20	80.0%	**	**	20	80.0%
Rockingham CC		64	76.6%	28	92.9%	92	81.6%
Rowan-Cabarrus CC		60	71.7%	16	93.8%	76	76.4%
Sampson CC		29	72.4%	**	**	29	72.4%
Sandhills CC		114	74.6%	30	83.3%	144	76.4%
South Piedmont		**	**	**	**	**	**
Southeastern CC		56	87.5%	17	100.0%	73	90.4%
Southwestern CC		31	71.0%	11	63.6%	42	69.1%
Stanly CC		19	73.7%	**	**	28	75.0%
Surry CC*		127	85.0%	66	84.8%	193	85.0%
Tri-County CC		20	95.0%	**	**	27	96.3%
Vance-Granville CC		30	86.7%	12	91.7%	42	88.1%
Wake TCC		324	82.7%	44	88.6%	368	83.4%
Wayne CC		105	76.2%	23	91.3%	128	78.9%
Western Piedmont CC		90	71.1%	35	85.7%	125	75.2%
Wilkes CC		46	87.0%	16	93.8%	62	88.8%
Wilson TCC		13	69.3%	**	**	22	81.9%
System Totals		3547	79.0%	1099	85.8%	4646	80.6%

*Includes data collected from private colleges and universities

CONTINUING EDUCATION

WAKE TECHNICAL COMMUNITY COLLEGE

FULL-TIME EQUIVALENCY (FTE) DEFINITIONS

CURRICULUM FTE: Includes College Transfer, General Education, Technical, and Vocational Education.

EXTENSION FTE: Includes Academic, Adult High School, Avocational, Occupational, Practical Skills, ABE, Compensatory Education, Learning Lab (ILC), New and Expanding Industry, Human Resource Development, and Self-Supporting.

BASIC SKILLS (LITERACY) FTE - Includes Adult High School, ABE, and Compensatory Education

HUMAN RESOURCES DEVELOPMENT FTE - Includes Human Resources

SMALL BUSINESS CENTER FTE - Includes New and Expanding Industry, and Self-Supporting.

REGULAR BUDGET EXTENSION - Includes Adult High School, Occupational, Adult Basic Education, and Compensatory Education.

NON-REGULAR BUDGET EXTENSION - Includes Learning Laboratory, New and Expanding Industry, Human Resource Development, And Self-Supporting.

COMMUNITY SERVICE - Includes Academic, Avocational, Practical Skills, and Cultural and Civic Activities.

OCCUPATIONAL - Includes Occupational only. Occupational Extension Programs consist of single courses, complete in themselves, designed for the specific purposes of training an individual for employment, upgrading skills of persons presently employed, and retraining others for new employment in occupational fields.

SELF-SUPPORTING - Includes courses which the College may provide at the request of the community but for which the College receives no budgetary credit. The cost of such activities are borne exclusively by the participants or some contracting agency.

SPECIAL NOTE: Wake Tech and the North Carolina Community College System changed from the Quarter System to the Semester System beginning with Fall Semester 1997. The Summer of 1997 was a period of transition. Therefore, enrollment and FTE numbers for the Summer of 1997 were diminished.

When comparing annual enrollment and FTE figures for the Quarter System with the Semester System, you must remember to average the Quarter System numbers and sum the Semester System numbers.

Main Campus = 401 South Campus

AEC = Adult Education Center (News & Observer)

HSC = Health Sciences Campus

SPDC = State Personnel Development Center

Office of Research

ADULT BASIC SKILLS PROGRAM ENROLLMENTS BY TYPE 2000-2001

INSTITUTION	1990 TARGET POP.	LEIS UNDUPLICATED HEADCOUNT							% OF POP. SERVED
		ABE	AHS	CED	ESL	GED	HSG	TOTAL	
Alamance CC	25,269	748	294	159	1,026	815	155	3,197	12.65%
Asheville-Buncombe TCC	38,873	2,030	67	217	1,168	694	241	4,417	11.36%
Beaufort County CC	14,670	706	2	74	365	213	1	1,361	9.28%
Bladen CC	8,654	599	93	38	115	113	12	970	11.21%
Blue Ridge CC	18,350	595	118	43	293	242	0	1,291	7.04%
Brunswick CC	11,582	220	143	118	78	288	1	848	7.32%
Caldwell CC & TI	28,772	1,425	194	108	547	731	10	3,015	10.48%
Cape Fear CC	26,376	982	344	53	937	389	0	2,705	10.26%
Carteret CC	9,618	360	181	76	59	194	14	884	9.19%
Catawba Valley CC	37,155	1,616	*	45	1,907	522	28	4,118	11.08%
Central Carolina CC	33,532	1,254	505	218	2,213	991	1	5,182	15.45%
Central Piedmont CC	69,835	3,454	1,277	314	4,398	1,832	2	11,277	16.15%
Cleveland CC	22,089	443	198	71	53	35	0	800	3.62%
Coastal Carolina CC	15,045	2,692	267	37	262	728	1,849	5,835	38.78%
College of the Albemarle	23,648	1,303	343	82	235	620	131	2,714	11.48%
Craven CC	13,372	581	133	66	277	335	22	1,414	10.57%
Davidson County CC	39,621	1,659	349	37	657	265	121	3,088	7.79%
Durham TCC	37,648	995	352	140	2,479	424	1	4,391	11.66%
Edgecombe CC	16,212	689	196	51	161	1,145	41	2,283	14.08%
Fayetteville TCC	34,431	3,148	260	161	903	453	1,582	6,507	18.90%
Forsyth TCC	53,218	2,287	358	104	2,565	556	27	5,897	11.08%
Gaston College	63,143	2,297	305	51	523	811	20	4,007	6.35%
Guilford TCC	60,326	3,200	847	147	3,067	1,113	50	8,424	13.96%
Halifax CC	23,882	1,147	*	39	26	245	0	1,457	6.10%
Haywood CC	11,463	627	*	27	155	251	74	1,134	9.89%
Isothermal CC	20,498	767	284	84	294	278	30	1,737	8.47%
James Sprunt CC	12,239	510	34	55	160	140	11	910	7.44%
Johnston CC	20,801	423	366	96	728	374	0	1,987	9.55%
Lenoir CC	22,346	1,535	156	29	342	382	32	2,476	11.08%
Martin CC	12,346	731	38	86	112	91	1	1,059	8.58%
Mayland CC	13,255	796	*	9	142	226	18	1,191	8.99%
McDowell TCC	10,818	405	2	81	221	165	80	954	8.82%
Mitchell CC	23,014	654	*	27	398	130	10	1,219	5.30%
Montgomery CC	7,445	302	29	21	208	100	5	665	8.93%
Nash CC	19,155	1,196	121	39	193	283	57	1,889	9.86%
Pamlico CC	2,861	267	2	10	43	56	1	379	13.25%
Piedmont CC	15,027	1,414	15	12	142	231	306	2,120	14.11%
Pitt CC	19,804	1,345	86	105	414	605	145	2,700	13.63%
Randolph CC	29,749	991	142	54	736	104	71	2,098	7.05%
Richmond CC	21,587	2,197	220	42	198	545	170	3,372	15.62%
Roanoke-Chowan CC	12,873	633	*	31	57	40	0	761	5.91%
Robeson CC	29,797	1,320	358	119	71	173	0	2,041	6.85%
Rockingham CC	25,574	1,002	1	57	192	347	69	1,668	6.52%
Rowan Cabarrus CC	50,922	1,131	140	40	1,631	403	11	3,356	6.59%
Sampson CC	12,725	712	*	120	298	65	1	1,196	9.40%
Sandhills CC	18,119	1,134	74	74	416	521	19	2,238	12.35%
South Piedmont CC	15,732	1,343	211	15	595	288	30	2,482	15.78%
Southeastern CC	13,992	1,068	101	56	73	198	23	1,519	10.86%
Southwestern CC	15,080	1,300	54	28	122	107	6	1,617	10.72%
Stanly CC	23,135	516	356	10	143	369	40	1,434	6.20%
Surry CC	28,521	912	*	90	636	535	33	2,206	7.73%
Tri-County CC	10,165	328	*	22	74	64	1	489	4.81%
Vance-Granville CC	35,236	2,117	222	93	533	874	9	3,848	10.92%
Wake TCC	45,581	2,737	146	107	4,880	1,376	188	9,434	20.70%
Wayne CC	20,911	1,763	482	84	466	512	1	3,308	15.82%
Western Piedmont CC	22,709	1,862	173	270	285	844	26	3,460	15.24%
Wilkes CC	30,935	886	312	166	515	119	160	2,158	6.98%
Wilson TCC	17,230	985	151	21	591	119	17	1,884	10.93%
System Totals	1,416,966	70,339	11,102	4,629	40,378	24,669	5,954	157,071	11.09%

*Does not offer AHSD program.
Source: Planning and Research, NCCCS

PROGRESS OF BASIC SKILLS STUDENTS, 2000-2001

INSTITUTION	SYSTEM TOTAL FTE	TOTAL SERVED IN LITERACY	COMPLETED A LEVEL	PROGRESSING SAME LEVEL	EXIT NON- COMPLETERS	MOVED TO A HIGHER LEVEL	COMPOSITE PROGRESS MEASURE
Alamance CC	2,613	3197	15%	71%	7%	7%	93%
Asheville-Buncombe TCC	4,529	4417	8%	48%	25%	19%	75%
Beaufort County CC	1,662	1361	7%	53%	24%	17%	76%
Bladen CC	1,008	970	6%	65%	9%	21%	91%
Blue Ridge CC	2,020	1291	15%	37%	14%	34%	86%
Brunswick CC	1,106	848	12%	44%	27%	17%	73%
Caldwell CC & TI	3,101	3015	15%	49%	21%	15%	79%
Cape Fear CC	4,952	2705	14%	41%	25%	20%	75%
Carteret CC	1,513	884	17%	46%	18%	19%	82%
Catawba Valley CC	3,393	4118	10%	59%	22%	10%	78%
Central Carolina CC	4,442	5182	13%	47%	27%	12%	73%
Central Piedmont CC	10,950	11277	14%	47%	24%	16%	76%
Cleveland CC	1,895	800	17%	64%	8%	11%	92%
Coastal Carolina CC	3,992	5835	16%	53%	17%	14%	83%
College of the Albemarle	2,015	2714	19%	55%	18%	8%	82%
Craven CC	2,206	1414	11%	61%	14%	14%	86%
Davidson County CC	2,600	3088	9%	43%	14%	34%	86%
Durham TCC	3,544	4391	9%	40%	34%	16%	66%
Edgecombe CC	1,893	2283	12%	60%	19%	9%	81%
Fayetteville TCC	8,248	6507	6%	60%	20%	14%	80%
Forsyth TCC	5,152	5897	8%	48%	20%	25%	80%
Gaston College	3,623	4007	13%	35%	35%	17%	65%
Guilford TCC	6,996	8424	9%	58%	27%	7%	73%
Halifax CC	1,430	1457	7%	53%	9%	32%	91%
Haywood CC	1,549	1134	4%	54%	16%	26%	84%
Isothermal CC	1,962	1737	8%	57%	19%	16%	81%
James Sprunt CC	1,244	910	10%	50%	7%	32%	93%
Johnston CC	2,992	1987	10%	56%	32%	2%	68%
Lenoir CC	2,474	2476	11%	53%	23%	13%	77%
Martin CC	923	1059	11%	66%	9%	15%	91%
Mayland CC	1,211	1191	21%	30%	18%	30%	82%
McDowell TCC	1,158	954	10%	47%	22%	20%	78%
Mitchell CC	1,870	1219	14%	38%	11%	37%	89%
Montgomery CC	662	665	5%	54%	33%	8%	67%
Nash CC	2,066	1889	12%	58%	20%	10%	80%
Pamlico CC	416	379	7%	49%	22%	22%	78%
Piedmont CC	1,770	2120	7%	59%	19%	14%	81%
Pitt CC	4,463	2700	10%	58%	25%	7%	75%
Randolph CC	2,042	2098	3%	73%	7%	17%	93%
Richmond CC	1,830	3372	7%	47%	17%	29%	83%
Roanoke-Chowan CC	942	761	12%	49%	22%	17%	78%
Robeson CC	2,794	2041	14%	46%	22%	18%	78%
Rockingham CC	1,904	1668	10%	49%	23%	18%	77%
Rowan Cabarrus CC	3,742	3356	14%	38%	36%	12%	64%
Sampson CC	1,426	1196	9%	38%	30%	23%	70%
Sandhills CC	3,195	2238	8%	53%	21%	18%	79%
South Piedmont	1,652	2482	18%	29%	24%	29%	76%
Southeastern CC	2,242	1519	10%	49%	24%	17%	76%
Southwestern CC	1,977	1617	11%	45%	21%	23%	79%
Stanly CC	1,516	1434	22%	47%	25%	7%	75%
Surry CC	2,903	2206	12%	41%	27%	21%	73%
Tri-County CC	1,104	489	15%	46%	7%	32%	93%
Vance-Granville CC	3,630	3848	15%	38%	25%	21%	75%
Wake TCC	8,550	9434	8%	45%	31%	16%	69%
Wayne CC	3,149	3308	20%	45%	6%	29%	94%
Western Piedmont CC	2,380	3460	11%	52%	18%	19%	82%
Wilkes CC	2,370	2158	9%	60%	18%	13%	82%
Wilson TCC	1,757	1884	8%	43%	34%	15%	66%
System Totals	160,747	157071	11%	50%	22%	17%	78%

WAKE TECHNICAL COMMUNITY COLLEGE

**EXTENSION FTE (INCLUDES BASIC SKILLS, LEARNING LAB,
OCCUPATIONAL EXTENSION, FOCUSED INDUSTRY TRAINING,
HUMAN RESOURCES DEVELOPMENT, NEW & EXPANDING
INDUSTRY, SMALL BUSINESS CENTER, JOB TRAINING
PARTNER, & COMMUNITY SERVICE)**

YEAR	FALL	WINTER	SPRING	SUMMER
1996-1997	1,278	1,646	2,281	376
1997-1998	844	0	775	594
1998-1999	815	0	870	592
1999-2000	864	0	763.7	608.6
2000-2001	816	0	815.1	513

OFFICE OF RESEARCH NOTE: No Winter Term under Semester System. For an explanation of Semester System FTE, see Glossary. To compare with the Quarter System you must add the Fall & Spring Semesters together. Summer 1997 was transitional.

MARCH 2002

SOURCE: WAKE TECHNICAL COMMUNITY COLLEGE REGISTRAR

WAKE TECHNICAL COMMUNITY COLLEGE
BASIC SKILLS FTE (INCLUDES ADULT HIGH SCHOOL, ABE,
COMPENSATORY EDUCATION)
LAST 5 YEARS

YEAR	FALL	WINTER	SPRING	SUMMER
1996-1997	227	673	784	132
1997-1998	313	0	261	189
1998-1999	259.7	0	266	199
1999-2000	274	0	282	200
2000-2001	297	0	243.2	212

OFFICE OF RESEARCH NOTE: No Winter Term under Semester System. For an explanation of Semester System FTE, see Glossary. To compare with the Quarter System you must add the Fall & Spring Semesters together. Summer 1997 was transitional.

MARCH 2002

SOURCE: WAKE TECHNICAL COMMUNITY COLLEGE REGISTRAR

WAKE TECHNICAL COMMUNITY COLLEGE
SELF-SUPPORTING FTE (INCLUDES: OCCUPATIONAL
EXTENSION RECEIPT, FOCUSED INDUSTRY TRAINING, SMALL
BUSINESS CENTER, JOB TRAINING PARTNERSHIP, HRD,
LEARNING LAB, COMMUNITY SERVICE SELF-SUPPORTING)
LAST 5 YEARS

YEAR	FALL	WINTER	SPRING	SUMMER
1996-1997	23	74	90	14
1997-1998	32	0	25	17
1998-1999	34.95	0	109	80
1999-2000	56	0	54.8	35.2
2000-2001	40	0	50.1	19.2

NEW AND EXPANDING INDUSTRY FTE
LAST 5 YEARS

1996-1997	153	161	117	31
1997-1998	58	0	80	74
1998-1999	64.8	0	100	50
1999-2000	75.7	0	49.5	50.1
2000-2001	91	0	48.6	24.2

OFFICE OF RESEARCH NOTE: No Winter Term under Semester System. For an explanation of Semester System FTE, see Glossary. To compare with the Quarter System you must add the Fall & Spring Semesters together. Summer 1997 was transitional.

MARCH 2002

SOURCE: WAKE TECHNICAL COMMUNITY COLLEGE REGISTRAR

WAKE TECHNICAL COMMUNITY COLLEGE

CONTINUING EDUCATION SERVICES

CORRECTIONS EDUCATION

	<u>1997</u>	<u>1998</u>	<u>1999</u>	<u>2000</u>	<u>2001</u>
Classes	175	276	329	346	357
Students	2,505	3,209	4,086	3,942	4,344

EVENING DIVISION (Non-Credit)

	<u>1997</u>	<u>1998</u>	<u>1999</u>	<u>2000</u>	<u>2001</u>
FTE	481	504	620.39	437.15	405
Students	15,080	15,241	18,931	14,683	13,813

FIRE SERVICES TRAINING

	<u>1997</u>	<u>1998</u>	<u>1999</u>	<u>2000</u>	<u>2001</u>
Classes	429	448	475	504	540
Students	6,051	6,563	7,412	7,296	8,119

LAW ENFORCEMENT TRAINING

	<u>1997</u>	<u>1998</u>	<u>1999</u>	<u>2000</u>	<u>2001</u>
Classes	92	198	339	340	346
Students	1,377	4,322	5,109	4,579	4,681

WORKPLACE BASIC SKILLS (ABE/GED, WORKPLACE SPECIFIC, AND ESL)

	<u>1996-97</u>	<u>1997-98</u>	<u>1998-99</u>	<u>2000</u>	<u>2001</u>
Sites	17	13	28	18	16
Employers	14	11	23	16	15
Students	237	260	760	477	387

SOURCE: WAKE TECHNICAL COMMUNITY COLLEGE CONTINUING EDUCATION

EMPLOYEES

WAKE TECHNICAL COMMUNITY COLLEGE
FULL-TIME EMPLOYEES STATISTIC USING EEOC CLASSIFICATION
DATA EFFECTIVE NOVEMBER 2001

FULL-TIME ANNUAL	MALES	%	FEMALES	%	TOTAL
EXECUTIVE/MANAGERIAL	13	72.2	5	27.8	18
INSTRUCTIONAL/FACULTY	118	42.4	158	57.6	274
PROFESSIONAL (NON-FACULTY)	46	41.1	66	58.9	112
SECRETARIAL/CLERICAL	1	1.2	89	98.8	90
TECHNICAL/PARPROFESSIONAL	4	22.3	14	77.7	18
SKILLED CRAFTS	3	100	0	0	3
SERVICE/MAINTENANCE	9	75	3	25	12
TOTAL	194	36.8	335	63.6	527

OFFICE OF RESEARCH
MARCH 2002
SOURCE: WAKE TECHNICAL COMMUNITY COLLEGE ADMINISTRATIVE SERVICES

WAKE TECHNICAL COMMUNITY COLLEGE
PART-TIME EMPLOYEES USING EEOC CLASSIFICATION BY SEX
DATA EFFECTIVE NOVEMBER 2001

EEOC CLASSIFICATION	MALES	FEMALES	TOTAL
EXECUTIVE/MANAGERIAL	1	0	1
INSTRUCTIONAL/FACULTY	337	388	725
PROFESSIONAL (NON-FACULTY)	3	14	17
SECRETARIAL/CLERICAL	2	19	21
TECHNICAL/PROFESSIONAL	2	16	18
SKILLED CRAFTS	0	0	0
SERVICE/MAINTENANCE	0	0	0
TOTAL	345	437	782

OFFICE OF RESEARCH
MARCH 2002
SOURCE: WAKE TECHNICAL COMMUNITY COLLEGE ADMINISTRATIVE SERVICES

FACILITIES

WAKE TECHNICAL COMMUNITY COLLEGE PERMANENT FACILITIES

ACADEMIC YEAR	GROSS SQUARE FEET	LEASED
1990	349,700	
1991	404,110	
1992	404,110	
1993	404,110	22,260
1994	404,110	22,260
1995	404,110	22,260
1996	404,110	22,260
1997	509,779	22,260
1998	509,779	22,260
1999	509,779	22,260
2000	509,779	22,260
2001	509,779	22,260
2002	517,779	22,260

SOURCE: FACILITIES INVENTORY AND UTILIZATION STUDY, STATE OF NORTH CAROLINA, THE UNIVERSITY OF NORTH CAROLINA, THE UNIVERSITY OF NORTH CAROLINA COMMISSION ON HIGHER EDUCATION FACILITIES CHAPEL HILL, NORTH CAROLINA, OCTOBER 2001.

Facilities Inventory and Utilization Study 2000

The primary purpose of this research document is to provide higher education administrators with a detailed statistical profile of the facilities of their own campuses and of other colleges and universities in North Carolina (Facilities Inventory and Utilization Study, 2000).

Capacity/Enrollment Ratio

The capacity/enrollment ratio, often referred to as the C/E ratio, is the amount of instructional and library space on campus divided by the total fall term student clock hours of that institution. In analyzing and comparing the capacity/enrollment ratios, it should be kept in mind that a relatively low ratio generally indicates a high level of space utilization.

Capacity/Enrollment Ratio Table 1 (pages 14-15)

	2000	1999	1998	1997	1996
Wake Tech CC	2.21*	2.28	2.79	2.76	2.78
Central Piedmont CC	3.78	3.80	3.29	2.64	2.79
Fayetteville CC	3.49	3.14	3.04	2.66	2.87
Guilford CC	4.88	4.40	4.75	4.60	3.74
System Average	4.04	3.97	4.06	3.64	3.62

* Lowest figure among the 58 NC Community Colleges in 2000

Facilities Inventory and Utilization Study 2000
State of North Carolina Higher Education Comprehensive Planning Program
The University of North Carolina Commission on Higher Education Facilities Chapel Hill,
North Carolina, October 2001

Square Feet of Academic Facilities Per FTE Student

The ratio of an institution's square footage of academic facilities to its full-time equivalent enrollment represents an important index of the instructional utilization of campus facilities. In this table, the FTE enrollments which are reported for the institutions of the Community College System include only credit enrollment generated in all inventoried space (on-campus only = Main Campus, Adult Education Center, and the Health Education Campus)

Square Feet of Academic Facilities Per FTE Student Table 2 (pages 22-23)

	2000	1999	1998	1997	1996
Wake Tech CC	54*	58	59	66	63
Central Piedmont CC	109	102	89	81	69
Fayetteville CC	91	85	85	83	68
Guilford CC	95	103	103	104	93
System Average	98	97	98	99	87

* Pitt CC and Wake Tech CC had the lowest figures for 2000.

Facilities Inventory and Utilization Study 2000
State of North Carolina Higher Education Comprehensive Planning Program
The University of North Carolina Commission on Higher Education Facilities Chapel Hill,
North Carolina, October 2001

Average Weekly Room Hours of Instruction in Classroom

Is the average number of hours that an institution's classrooms are used for instructional purposes each week.

For the purpose of this study, a classroom is defined as a room used to conduct classes that do not require special-purpose equipment for student use.

Daytime utilization is based on all classes with beginning times between and including 5:00 a.m. and 4:59 p.m.; nighttime utilization is based on all other classes. The "All Hours" section in Table 3 indicates the sum of the daytime and nighttime figures for the last five years.

Average Weekly Room Hours of Instruction in Classrooms Table 3 (pages 28-29)

	Daytime Hours	Nighttime Hours	2000	1999	1998	1997	1996
			All Hours				
Wake Tech CC	24.3	4.9	29.2	30.0	27.0	24.4	26.0
Central Piedmont CC	15.7	5.5	21.2	20.9	22.8	22.2	26.5
Fayetteville CC	16.6	5.7	22.3	23.2	23.4	24.9	30.1
Guilford CC	11.0	2.9	13.9	17.6	16.2	14.9	15.5
System Average	15.0	5.4	20.4	20.6	20.0	20.2	22.6

* Pitt CC had the highest figure for 2000: 33.7 (All Hours)
Nash CC had the second highest figure for 2000: 29.8
Surry CC had the third highest figure for 2000: 29.4
Wake Tech CC had the fourth highest figure for 2000: 29.2

Facilities Inventory and Utilization Study 2000
State of North Carolina Higher Education Comprehensive Planning Program
The University of North Carolina Commission on Higher Education Facilities Chapel Hill,
North Carolina, October 2001

Average Weekly Room Hours of Instruction in Class Laboratories

Is the average number of hours that an institution's class laboratories are used for instructional purposes each week.

For purposes of this study, a class laboratory is defined as a room used primarily for regularly scheduled classes that require special-purpose equipment for student participation, experimentation, observation or practice in a field of study.

Daytime utilization is based on all classes with beginning times between and including 5:00 a.m. and 4:59 p.m.; nighttime utilization is based on all other classes. The "All Hours" section in Table 4 indicates the sum of the daytime and nighttime figures for the last five years.

**Average Weekly Room Hours of Instruction in Class Laboratories Table 4
(pages 34-35)**

	Daytime Hours	Nighttime Hours	2000	1999	1998	1997	1996
			All Hours				
Wake Tech CC	23.2	6.8	30.0*	27.3	28.8	26.3	28.6
Central Piedmont CC	13.2	5.2	18.4	18.0	20.1	19.4	26.0
Fayetteville CC	13.3	3.6	16.9	17.7	17.6	20.2	17.5
Guilford CC	10.2	3.7	13.9	14.7	13.1	13.2	13.9
System Average	13.1	4.9	18.0	17.8	17.6	17.9	19.0

* Wake Tech CC had the highest figure for 2000: 30.0

Facilities Inventory and Utilization Study 2000
State of North Carolina Higher Education Comprehensive Planning Program
The University of North Carolina Commission on Higher Education Facilities Chapel Hill,
North Carolina, October 2001

Average Weekly Use of Student Stations in Classrooms

The average number of hours each week that each classroom student station (seat) is used.

Average Weekly Use of Student Stations in Classrooms Table 5 (pages 40-41)

	Daytime Hours	Nighttime Hours	2000	1999	1998	1997	1996
			All Hours				
Wake Tech CC	15.5	2.9	18.4	18.8	17.1	15.1	15.2
Central Piedmont CC	8.0	2.8	10.8	10.5	12.2	12.2	14.6
Fayetteville CC	8.8	2.3	11.1	12.4	12.3	12.2	15.5
Guilford CC	7.7	1.9	9.6	11.6	10.5	10.0	9.5
System Average	8.6	2.6	11.2	11.5	11.2	11.2	12.6

* Pitt CC had the highest figure for 2000: 20.9

Wake Tech CC had the second highest figure for 2000: 18.4

Facilities Inventory and Utilization Study 2000

State of North Carolina Higher Education Comprehensive Planning Program

The University of North Carolina Commission on Higher Education Facilities Chapel Hill,
North Carolina, October 2001

Average Weekly Use of Student Stations in Class Laboratories

The average number of hours each week that each class lab student station is used.

Average Weekly Use of Student Stations in Class Laboratories Table 6 (pages 46-47)

	Daytime Hours	Nighttime Hours	All Hours				
			2000	1999	1998	1997	1996
Wake Tech CC	17.3	5.6	22.9*	21.5*	23.3	19.7	20.7
Central Piedmont CC	6.0	2.5	8.5	9.3	11.2	10.5	13.8
Fayetteville CC	7.3	1.6	8.9	9.7	9.8	10.6	10.6
Guilford CC	8.0	2.7	10.7	10.1	9.3	9.9	9.7
System Average	8.0	2.6	10.6	10.6	10.7	10.6	11.5

* Wake Tech CC had the highest figure for 2000: 22.9

Facilities Inventory and Utilization Study 2000

State of North Carolina Higher Education Comprehensive Planning Program

The University of North Carolina Commission on Higher Education Facilities Chapel Hill,
North Carolina, October 2001

Percent Student Station Utilization Classrooms and Class Laboratories

Percent student station utilization indicates the average percentage of student stations (seats) that are occupied when classrooms or class laboratories are in use.

Percent Student Station Utilization Classrooms and Class Laboratories Table 7 (pages 52-53)

Classrooms

CLASSROOMS	2000	1999	1998	1997	1996
Wake Tech CC	63.6*	64.2	64.2	61.8	59.4
Central Piedmont CC	47.5	48.1	52.9	53.4	53.6
Fayetteville CC	46.1	49.9	50.2	47.3	49.7
Guilford CC	61.1	62.6	61.6	64.8	58.1
System Average	52.0	53.1	53.0	52.6	52.8

* Wake Tech CC had the highest classroom figure for 2000: 63.6

Class Laboratories

LABORATORIES	2000	1999	1998	1997	1996
Wake Tech CC	70.1*	72.2	75.6	71.3	67.8
Central Piedmont CC	43.9	49.7	48.1	45.2	44.7
Fayetteville CC	50.5	53.4	54.2	52.3	57.0
Guilford CC	65.8	61.7	65.0	67.2	63.4
System Average	53.9	54.8	55.8	54.5	55.8

* Wake Tech CC had the highest figure for Class Laboratories for 2000: 70.1

Facilities Inventory and Utilization Study 2000
State of North Carolina Higher Education Comprehensive Planning Program
The University of North Carolina Commission on Higher Education Facilities Chapel Hill,
North Carolina, October 2001

Enrollments

This table for 1996-1998 lists only fall on-campus (inventoried space) credit enrollment. Noncredit enrollments are not included. Instruction which took place in facilities not on a community college's facilities inventory was not considered in determining the FTE enrollment listed. For 1999 and 2000, the fall on-campus credit FTE is provided, but as a means of comparison, the total fall credit FTE (representing both on-campus and off-campus credit instruction) is listed for all colleges in parentheses.

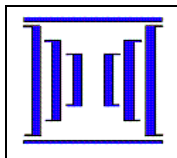
FTE Enrollments Table 12 (pages 74-75)

	2000	1999	1998	1997	1996
Wake Tech CC	5,846 (6,556)	5,338 (7,788)	5,022	4,452	4,250
Central Piedmont CC	6,188 (8,850)	6,426 (10,666)	6,966	6,810	7,943
Fayetteville CC	4,652 (5,748)	4,832 (8,088)	4,514	4,296	4,997
Guilford CC	5,568 (5,842)	5,160 (6,566)	4,994	4,670	5,076

* Figures in parentheses represent total FTE enrollments (both on and off campus).

Facilities Inventory and Utilization Study 2000
 State of North Carolina Higher Education Comprehensive Planning Program
 The University of North Carolina Commission on Higher Education Facilities Chapel Hill,
 North Carolina, October 2001

COMPARISONS



North Carolina Community College System

Curriculum/Continuing Education Information System

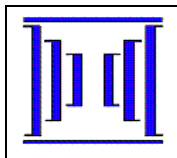
Annual Curriculum and Continuing Education Student Enrollment by College

ANNTBL1
Report Period: 2000-2001

Last Refresh on: 01/30/02

	Curriculum Programs					Continuing Education Programs													
Colleges	ASSOCIATE	CERTIFICATE	DIPLOMA	TRANSITION	CURR SUB-TOTAL	BASIC SKILLS	OCC RB	BUDGET SUBTOTAL	LEARN LAB	OCC SS	FIT	HRD	NIT EIT	SBC	COMM SVC	NON OCC SS	CON-ED SUBTOTAL	UNDULICATED TOTAL	
Alamance CC	3,003	473	338	1,277	4,969	3,251	4,969	8,140	0	321	59	144	79	44	780	729	9,883	14,443	
Asheville-Buncombe TCC	3,549	270	411	3,480	7,415	4,274	8,423	12,580	0	818	56	992	1,603	482	568	2,196	17,919	24,356	
Beaufort County CC	1,227	25	181	584	1,977	1,423	2,557	3,955	0	372	24	256	206	293	179	634	5,526	7,240	
Bladen CC	520	37	191	676	1,391	970	1,667	2,573	14	0	15	406	133	146	152	1,057	4,081	5,248	
Blue Ridge CC	1,449	249	249	775	2,634	1,943	4,695	6,432	33	613	151	737	262	332	239	4,279	11,953	14,193	
Brunswick CC	801	112	174	208	1,273	853	2,251	3,074	0	283	9	310	700	169	392	1,485	5,995	7,095	
Caldwell CC & TI	2,225	422	744	1,160	4,425	3,032	4,404	7,362	12	107	132	866	129	900	701	1,051	10,531	14,233	
Cape Fear CC	5,676	467	363	1,275	7,629	2,842	6,518	9,238	786	396	111	1,596	284	338	143	6,008	17,733	23,871	
Carteret CC	1,122	103	148	930	2,242	899	2,709	3,575	0	262	25	402	0	515	200	141	4,886	6,868	
Catawba Valley CC	3,335	436	242	1,720	5,589	4,189	3,966	8,082	0	2,300	207	789	772	457	713	2,982	15,445	20,379	
Central Carolina CC	2,900	1,374	460	1,221	5,829	5,207	5,659	10,768	0	280	163	807	461	168	610	501	13,240	18,505	
Central Piedmont CC	14,212	563	702	14,346	28,952	12,366	9,982	22,111	0	10,682	117	487	1,514	29	0	3,033	36,461	62,882	
Cleveland CC	1,547	210	446	1,386	3,504	800	2,079	2,866	0	203	59	845	205	243	496	489	5,136	8,306	
Coastal Carolina CC	4,323	447	355	858	5,816	5,980	9,993	15,655	547	1,728	45	492	306	565	609	2,965	21,315	25,675	
College of The Albemarle	1,883	102	226	1,068	3,211	2,765	3,343	6,057	0	98	4	760	29	1,331	0	689	8,419	10,971	
Craven CC	2,707	85	182	998	3,906	1,450	4,044	5,440	12	646	108	809	246	480	177	816	8,211	11,728	
Davidson County CC	1,785	214	271	1,299	3,474	3,212	7,583	10,684	0	1,087	385	1,043	232	507	220	637	13,889	16,438	
Durham TCC	3,830	212	230	3,523	7,507	4,225	6,316	10,495	0	75	78	1,269	257	0	255	226	12,342	19,335	
Edgecombe CC	1,724	3	215	921	2,819	2,299	2,303	4,230	0	0	0	303	1,426	545	91	81	6,455	9,001	
Fayetteville TCC	6,734	161	678	5,548	12,642	6,540	12,128	18,284	0	4,323	101	802	81	466	2,306	322	25,082	36,294	
Forsyth TCC	4,746	413	491	1,793	7,329	6,017	8,517	14,371	0	3,488	494	557	47	736	712	2,114	21,312	27,801	
Gaston College	3,972	345	410	1,170	5,806	3,981	5,060	8,964	0	3,215	129	1,093	414	404	227	1,181	14,577	19,692	
Guilford TCC	8,720	63	230	1,918	10,871	5,318	6,104	11,289	0	1,485	297	855	492	527	898	5,164	19,855	29,930	
Halifax CC	1,262	204	148	312	1,898	1,482	3,029	4,414	8	303	201	46	84	1,004	254	83	6,019	7,654	

* Unduplicated headcounts are reported in each cell. Rows and columns will not add up.



North Carolina Community College System

Curriculum/Continuing Education Information System

Annual Curriculum and Continuing Education Student Enrollment by College

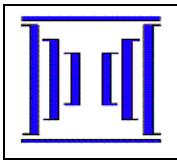
ANNTBL1

Report Period: 2000-2001

Last Refresh on: 01/30/02

	Curriculum Programs					Continuing Education Programs													
Colleges	ASSOCIATE	CERTIFICATE	DIPLOMA	TRANSITION	CURR SUB-TOTAL	BASIC SKILLS	OCC RB	BUDGET SUBTOTAL	LEARN LAB	OCC SS	FIT	HRD	NIT EIT	SBC	COMM SVC	NON OCC SS	CON-ED SUBTOTAL	UNDUPLICATED TOTAL	
Haywood CC	1,197	272	113	770	2,296	964	2,146	3,070	616	0	0	884	984	250	238	847	6,270	7,823	
Isothermal CC	1,369	173	375	859	2,709	1,767	1,361	3,082	0	0	78	432	493	589	154	4,363	8,102	10,286	
James Sprunt CC	764	197	270	642	1,816	918	1,729	2,627	273	0	84	240	52	633	188	1,170	4,964	6,337	
Johnston CC	2,066	1,251	294	1,022	4,572	1,828	4,164	5,977	1,092	750	111	214	192	1,444	178	950	10,125	13,354	
Lenoir CC	1,813	170	115	1,027	3,040	2,523	4,728	7,158	0	0	62	766	873	901	202	1,706	10,868	13,481	
Martin CC	611	6	93	216	904	1,056	1,877	2,911	0	73	6	293	0	257	408	81	3,845	4,615	
Mayland CC	633	346	158	383	1,477	1,200	2,728	3,844	0	148	56	659	47	183	69	511	5,158	6,303	
McDowell TCC	875	129	247	397	1,612	1,079	2,984	4,023	0	2,858	266	1,403	92	102	214	766	8,963	10,204	
Mitchell CC	1,547	92	400	726	2,664	2,333	3,495	5,782	0	555	101	1,153	738	286	81	887	8,964	11,266	
Montgomery CC	593	147	106	284	1,091	671	1,134	1,780	0	378	19	192	56	299	45	62	2,609	3,573	
Nash CC	1,999	480	90	757	3,278	1,905	4,040	5,904	193	177	110	661	241	584	260	201	7,881	10,812	
Pamlico CC	194	157	35	74	452	382	792	1,114	19	0	8	83	0	188	108	32	1,473	1,831	
Piedmont CC	1,056	643	224	984	2,855	2,199	1,794	3,900	0	541	110	844	282	305	178	0	5,708	8,202	
Pitt CC	4,899	275	257	2,271	7,454	2,731	4,005	6,671	0	3,039	164	364	921	97	167	206	11,008	17,769	
Randolph CC	1,622	182	281	624	2,649	2,129	4,484	6,558	0	398	271	599	173	263	260	1,623	9,373	11,663	
Richmond CC	1,502	106	74	276	1,918	3,391	1,814	4,808	0	20	201	901	249	328	38	0	5,624	7,325	
Roanoke-Chowan CC	851	45	240	301	1,387	766	846	1,602	0	0	16	35	0	333	372	12	2,341	3,638	
Robeson CC	1,754	322	164	286	2,475	3,131	5,159	8,202	0	859	175	123	397	427	337	163	10,187	12,339	
Rockingham CC	1,467	454	218	529	2,548	1,671	3,675	5,210	0	511	97	291	91	559	358	2,326	8,914	10,937	
Rowan-Cabarrus CC	3,466	868	344	1,675	6,135	3,366	6,557	9,862	0	986	328	1,237	1,163	530	252	94	13,188	18,664	
Sampson CC	1,045	214	139	599	1,899	1,204	2,012	3,096	0	79	0	2,253	0	379	286	1,129	6,497	7,975	
Sandhills CC	2,828	215	129	863	3,967	2,269	5,406	7,448	0	907	125	133	212	1,307	239	1,085	10,575	14,045	
Southeastern CC	1,682	314	284	621	2,782	1,546	2,684	4,174	0	57	8	354	155	531	1,531	23	6,335	8,509	
South Piedmont CC	1,042	523	379	957	2,782	2,502	2,843	5,235	0	313	140	946	25	315	86	319	6,830	9,033	

* Unduplicated headcounts are reported in each cell. Rows and columns will not add up.



North Carolina Community College System

Curriculum/Continuing Education Information System

Annual Curriculum and Continuing Education Student Enrollment by College

ANNTBL1

Report Period: 2000-2001

Last Refresh on: 01/30/02

Colleges	Curriculum Programs					Continuing Education Programs												UNDUPLICATED TOTAL
	ASSOCIATE	CERTIFICATE	DIPLOMA	TRANSITION	CURR SUB-TOTAL	BASIC SKILLS	OCC RB	BUDGET SUBTOTAL	LEARN LAB	OCC SS	FIT	HRD	NIT EIT	SBC	COMM SVC	NON OCC SS	CON-ED SUBTOTAL	
Southwestern CC	1,583	89	35	724	2,372	1,630	3,141	4,473	0	306	8	574	94	283	0	622	5,790	7,890
Stanly CC	1,092	345	121	835	2,282	1,414	2,616	3,945	0	18	58	120	70	279	164	0	4,431	6,353
Surry CC	2,597	164	484	1,140	4,199	2,221	4,495	6,542	0	56	1,499	666	0	708	763	263	9,771	13,353
Tri-County CC	1,088	67	149	264	1,525	479	1,343	1,800	0	348	0	642	387	229	438	219	3,656	4,767
Vance-Granville CC	2,525	282	418	1,672	4,830	3,858	5,885	9,503	0	205	1,162	309	907	288	562	378	12,538	16,598
Wake TCC	9,370	2,097	464	2,792	14,214	9,619	14,694	24,035	2,247	2,582	182	308	1,555	914	3,518	302	34,154	45,387
Wayne CC	3,166	126	253	956	4,408	3,312	4,766	7,879	484	140	134	149	31	680	934	161	10,250	14,091
Western Piedmont CC	2,119	202	147	866	3,266	3,601	4,674	8,055	255	1,800	71	587	73	292	366	1,554	11,481	14,197
Wilkes CC	1,892	180	177	727	2,903	2,210	5,236	7,250	0	636	789	928	291	251	263	160	9,566	11,861
Wilson TCC	1,361	228	194	690	2,391	1,906	4,405	6,269	0	393	143	402	212	596	851	32	8,436	10,531
Total 2000-2001	145,155	18,287	15,506	75,432	244,508	156,271	230,320	378,985	6,581	51,757	9,516	36,271	20,989	26,042	24,935	60,993	569,172	772,280
Total 1999-2000	141,826	16,609	15,749	68,233	233,514	147,259	241,699	381,416	6,600	56,399	8,653	24,814	18,004	24,422	28,535	60,121	564,454	757,747
Total 1998-1999	134,456	15,927	16,932	68,671	227,113	140,540	262,516	395,845	7,335	50,031	10,659	23,498	19,095	21,577	41,505	50,549	573,717	759,938

* Unduplicated headcounts are reported in each cell. Rows and columns will not add up.

North Carolina Community College System

Course/FTE Information System

Annualized Average Full-Time Equivalent (FTE)

ANNTBL26

Report Period: 2000-2001

Last Refresh on: 9/25/2001

Colleges	Curriculum Programs (Fall & Spring)					Extension Programs (Spring, Summer & Fall)												TOTAL
	Associate	Certificate	Diploma	Transitional	TOTAL	Basic Skills	Occ Rb	SUBTOTAL BUDGET	Community Service - Grant Supported & Receipt Supported	Focused Industry Training Fit	Human Resources Development Hrd	Learning Laboratory	New And Expanded Industry Nit & Eit	Self Supported - Non Occupational	Self Supported Occupational Extension	Small Business Center Sbc	SUBTOTAL NON BUDGET	
Alamance CC	1,503	121	195	272	2,090	212	187	399	19	7	9	0	30	43	15	0	124	2,613
Asheville-Buncombe TCC	2,142	127	244	868	3,381	346	558	904	31	6	45	0	32	73	53	2	243	4,529
Beaufort County CC	822	28	154	128	1,132	259	189	448	25	0	9	0	15	29	2	1	82	1,662
Bladen CC	327	17	148	311	802	49	127	176	9	1	7	1	6	5	0	1	30	1,008
Blue Ridge CC	815	127	190	167	1,299	179	408	587	12	7	12	1	31	60	10	1	133	2,020
Brunswick CC	462	81	124	44	711	178	160	338	14	0	7	0	6	27	3	1	58	1,106
Caldwell CC & TI	1,501	288	429	272	2,491	236	288	524	25	3	28	0	12	15	0	3	86	3,101
Cape Fear CC	3,366	300	233	212	4,111	278	414	692	0	3	30	7	14	88	6	2	149	4,952
Carteret CC	686	57	123	323	1,189	151	136	287	17	0	8	0	0	4	2	5	37	1,513
Catawba Valley CC	1,931	203	151	335	2,619	174	277	451	27	18	16	0	162	59	38	3	323	3,393
Central Carolina CC	1,810	700	347	364	3,222	734	371	1,104	29	6	29	0	27	12	14	0	116	4,442
Central Piedmont CC	5,494	134	243	2,650	8,521	882	822	1,704	3	5	51	0	300	66	301	0	725	10,950
Cleveland CC	803	81	304	313	1,501	134	142	276	57	2	10	0	37	4	4	2	117	1,895
Coastal Carolina CC	2,135	169	297	125	2,726	242	883	1,125	34	2	29	4	22	20	23	7	141	3,992
College of The Albemarle	1,101	52	169	216	1,538	255	157	412	0	0	38	0	0	16	2	9	65	2,015
Craven CC	1,315	55	157	171	1,697	153	233	385	7	4	20	0	59	24	5	2	123	2,206
Davidson County CC	1,103	127	230	380	1,839	261	431	692	2	8	20	0	3	13	20	3	69	2,600
Durham TCC	1,893	95	137	696	2,821	370	318	689	6	0	9	0	4	11	3	0	34	3,544
Edgecombe CC	911	3	176	225	1,316	320	125	444	12	0	13	0	105	2	0	1	133	1,893
Fayetteville TCC	3,983	91	474	1,322	5,871	877	1,107	1,983	131	5	70	0	24	7	155	2	394	8,248
Forsyth TCC	3,009	143	304	401	3,858	441	574	1,016	52	9	19	0	36	81	78	4	279	5,152
Gaston College	2,385	160	239	198	2,983	244	251	495	20	4	26	0	4	17	70	4	145	3,623
Guilford TCC	4,907	34	132	414	5,487	548	525	1,073	81	18	38	0	93	119	84	4	436	6,996

North Carolina Community College System

Course/FTE Information System

Annualized Average Full-Time Equivalent (FTE)

ANNTBL26

Report Period: 2000-2001

Last Refresh on: 9/25/2001

Colleges	Curriculum Programs (Fall & Spring)					Extension Programs (Spring, Summer & Fall)												TOTAL
	Associate	Certificate	Diploma	Transitional	TOTAL	Basic Skills	Occ Rb	SUBTOTAL BUDGET	Community Service - Grant Supported & Receipt Supported	Focused Industry Training Fit	Human Resources Development Hrd	Learning Laboratory	New And Expanded Industry Nit & Eit	Self Supported - Non Occupational	Self Supported Occupational Extension	Small Business Center Sbc	SUBTOTAL NON BUDGET	
Halifax CC	800	139	110	54	1,102	108	167	275	20	3	9	0	6	3	3	8	52	1,430
Haywood CC	926	91	113	168	1,297	76	123	199	3	1	7	2	0	38	0	1	52	1,549
Isothermal CC	923	91	242	192	1,448	131	94	225	0	2	12	0	160	110	0	5	288	1,962
James Sprunt CC	541	111	179	152	984	93	89	182	31	3	15	4	7	14	0	5	79	1,244
Johnston CC	1,293	670	228	237	2,427	297	183	480	13	3	22	7	1	26	10	4	85	2,992
Lenoir CC	1,205	138	80	234	1,656	310	346	656	23	1	32	0	40	57	0	8	162	2,474
Martin CC	462	3	64	40	569	197	105	302	33	1	15	0	0	1	1	1	52	923
Mayland CC	373	234	80	72	759	157	245	402	8	1	20	0	11	8	1	1	50	1,211
McDowell TCC	508	88	122	88	807	147	117	263	19	4	20	0	33	5	6	1	88	1,158
Mitchell CC	947	61	197	113	1,317	113	198	311	6	1	11	0	189	25	7	2	242	1,870
Montgomery CC	337	69	70	56	531	43	63	106	5	1	5	0	2	2	8	2	25	662
Nash CC	1,162	135	67	153	1,517	196	295	491	16	3	21	1	4	8	1	3	58	2,066
Pamlico CC	101	90	18	19	228	101	61	162	5	0	17	0	0	4	0	1	26	416
Piedmont CC	623	299	161	357	1,440	122	105	227	18	3	48	0	24	0	9	2	104	1,770
Pitt CC	3,080	131	212	441	3,864	221	220	441	12	4	11	0	93	10	25	2	158	4,463
Randolph CC	1,080	82	136	83	1,382	241	324	566	4	4	6	0	29	47	3	2	95	2,042
Richmond CC	918	65	37	64	1,083	506	169	674	1	4	57	0	7	0	1	3	73	1,830
Roanoke-Chowan CC	537	14	159	44	753	85	44	129	51	3	2	0	0	0	0	4	60	942
Robeson CC	1,111	206	162	57	1,536	766	359	1,124	8	5	19	0	77	10	13	2	134	2,794
Rockingham CC	977	217	156	102	1,452	87	278	365	20	8	27	0	5	19	4	5	87	1,904
Rowan-Cabarrus CC	1,887	359	246	292	2,784	191	496	687	14	6	46	0	195	2	5	3	272	3,742
Sampson CC	625	113	68	93	898	283	122	406	40	0	69	0	0	9	1	3	122	1,426
Sandhills CC	2,160	119	94	140	2,513	303	282	585	1	2	7	0	29	30	11	15	96	3,195

North Carolina Community College System

Course/FTE Information System

Annualized Average Full-Time Equivalent (FTE)

ANNTBL26

Report Period: 2000-2001

Last Refresh on: 9/25/2001

Colleges	Curriculum Programs (Fall & Spring)					Extension Programs (Spring, Summer & Fall)												TOTAL
	Associate	Certificate	Diploma	Transitional	TOTAL	Basic Skills	Occ Rb	SUBTOTAL BUDGET	Community Service - Grant Supported & Receipt Supported	Focused Industry Training Fit	Human Resources Development Hrd	Learning Laboratory	New And Expanind Industry Nit & Eit	Self Supported - Non Occupational	Self Supported Occupational Extension	Small Business Center Sbc	SUBTOTAL NON BUDGET	
Southeastern CC	1,215	176	215	102	1,708	302	146	448	42	1	39	0	0	1	3	2	87	2,242
South Piedmont CC	567	223	185	224	1,199	210	142	352	2	-3	73	0	17	6	3	2	100	1,652
Southwestern CC	1,149	38	34	160	1,381	194	356	551	0	0	11	0	8	14	10	1	45	1,977
Stanly CC	710	261	61	150	1,181	106	180	286	15	5	4	0	18	0	4	2	48	1,516
Surry CC	1,795	42	302	223	2,362	148	312	460	45	8	12	0	0	8	1	5	80	2,903
Tri-County CC	624	9	117	92	842	25	116	141	35	0	5	0	71	4	6	1	121	1,104
Vance-Granville CC	1,473	251	288	650	2,662	344	449	793	18	10	33	0	90	20	3	2	176	3,630
Wake TCC	5,018	604	273	565	6,460	780	822	1,602	174	20	36	16	185	2	51	4	488	8,550
Wayne CC	1,877	87	186	157	2,308	317	433	750	50	7	7	7	10	2	3	5	91	3,149
Western Piedmont CC	1,257	74	87	143	1,561	459	228	687	45	4	21	3	12	10	34	2	132	2,380
Wilkes CC	1,372	57	84	114	1,626	181	369	550	12	9	11	0	128	22	10	2	194	2,370
Wilson TCC	751	121	170	154	1,196	139	284	422	97	4	18	0	8	1	8	3	139	1,757
Total 2000-2001	84,787	8,658	10,202	16,393	120,040	15,503	17,002	32,505	1,501	238	1,313	53	2,478	1,310	1,134	175	8,203	160,748
Total 1999-2000	83,621	7,710	10,331	14,332	115,994	14,952	18,300	33,252	2,034	239	1,362	64	2,673	1,224	1,383	173	9,152	158,399
Total 1998-1999	79,928	7,432	10,803	14,510	112,674	14,608	17,529	32,137	2,384	251	1,355	84	2,990	1,090	1,362	155	9,670	154,481

North Carolina Community College System

Course FTE Information System

Two Semester Annualized FTE

Ranked by Annual FTE

ANNTBL29

Fall 2000 - Spring 2001

Last Refresh on: 9/25/2001

Rank	Colleges	Fall	Spring	2000-2001 Annual FTE	1999-2000 Annual FTE	1998-1999 Annual FTE
1	Central Piedmont CC	4,425	4,097	8,521	8,057	8,231
2	Wake TCC	3,278	3,183	6,460	5,932	5,545
3	Fayetteville TCC	2,874	2,997	5,871	5,948	5,636
4	Guilford TCC	2,921	2,567	5,487	5,161	5,016
5	Cape Fear CC	2,100	2,011	4,111	3,937	3,514
6	Pitt CC	2,013	1,850	3,864	3,760	3,466
7	Forsyth TCC	2,002	1,856	3,858	3,649	3,289
8	Asheville-Buncombe TCC	1,756	1,625	3,381	3,155	3,055
9	Central Carolina CC	1,670	1,551	3,222	2,903	2,775
10	Gaston College	1,464	1,519	2,983	2,824	2,705
11	Durham TCC	1,435	1,389	2,824	2,826	2,915
12	Rowan-Cabarrus CC	1,450	1,335	2,784	2,658	2,572
13	Coastal Carolina CC	1,401	1,325	2,726	2,706	2,705
14	Vance-Granville CC	1,380	1,282	2,662	2,505	2,367
15	Catawba Valley CC	1,346	1,273	2,619	2,439	2,566
16	Sandhills CC	1,319	1,194	2,513	2,511	2,324
17	Caldwell CC & TI	1,256	1,235	2,491	2,336	2,273
18	Johnston CC	1,221	1,206	2,427	2,330	2,285
19	Surry CC	1,221	1,142	2,362	2,296	2,182
20	Wayne CC	1,156	1,151	2,308	2,252	2,340
21	Alamance CC	1,077	1,012	2,089	2,104	2,101
22	Davidson County CC	947	892	1,839	1,740	1,756
23	Southeastern CC	871	837	1,708	1,742	1,584
24	Craven CC	855	842	1,697	1,665	1,712
25	Lenoir CC	841	815	1,657	1,675	1,753
26	Wilkes CC	845	781	1,626	1,570	1,504
27	Western Piedmont CC	806	756	1,561	1,584	1,634
28	College of The Albemarle	807	732	1,538	1,512	1,448
29	Robeson CC	773	763	1,536	1,476	1,425
30	Nash CC	772	744	1,517	1,289	1,398
31	Cleveland CC	740	762	1,501	1,566	1,410
32	Rockingham CC	764	688	1,452	1,443	1,363
33	Isothermal CC	733	715	1,448	1,588	1,366
34	Piedmont CC	738	703	1,441	1,371	1,252
35	Randolph CC	718	664	1,382	1,379	1,197
36	Southwestern CC	687	694	1,381	1,391	1,374

North Carolina Community College System

Course FTE Information System

Two Semester Annualized FTE

Ranked by Annual FTE

ANNTBL29

Fall 2000 - Spring 2001

Last Refresh on: 9/25/2001

Rank	Colleges	Fall	Spring	2000-2001 Annual FTE	1999-2000 Annual FTE	1998-1999 Annual FTE
37	Mitchell CC	678	639	1,317	1,278	1,234
38	Edgecombe CC	673	642	1,316	1,234	1,339
39	Blue Ridge CC	664	635	1,299	1,229	1,246
40	Haywood CC	640	657	1,297	1,237	1,344
41	South Piedmont CC	607	592	1,199	1,107	1,104
42	Wilson TCC	593	603	1,196	1,102	1,106
43	Carteret CC	606	583	1,189	1,155	1,060
44	Stanly CC	602	579	1,181	1,108	1,270
45	Beaufort County CC	563	569	1,132	1,149	1,194
46	Halifax CC	545	557	1,102	1,277	1,258
47	Richmond CC	537	546	1,083	1,068	1,111
48	James Sprunt CC	528	455	984	913	994
49	Sampson CC	471	427	898	966	951
50	Tri-County CC	380	462	842	860	689
51	McDowell TCC	420	387	807	813	793
52	Bladen CC	403	399	802	800	691
53	Mayland CC	347	412	759	657	629
54	Roanoke-Chowan CC	383	370	753	691	716
55	Brunswick CC	371	340	711	698	640
56	Martin CC	283	285	569	617	533
57	Montgomery CC	262	269	531	522	528
58	Pamlico CC	109	119	228	229	208
	Total 2000-2001	61,329	58,713	120,042	0	0
	Total 1999-2000	59,646	56,349	0	115,994	0
	Total 1998-1999	57,581	55,093	0	0	112,674

**WAKE TECHNICAL COMMUNITY COLLEGE
INSTITUTIONAL EFFECTIVENESS DATA COLLECTION PROCEDURES**

ITEM	PERSON(S) RESPONSIBLE	DEADLINE/ FREQUENCY	METHOD OF DOCUMENTATION/DISEMINATION
1. College Support Services	Dean of IE	Once a year in the spring semester	Copies of report sent to the President and Vice Presidents. Written comments sent to the President for him to distribute
2. Graduate Survey	Dean of IE	Once a year after graduation	Copies of report sent to Director of Placement
3. Non-Completers Survey	Dean of IE	Once a year in the beginning of fall semester	Copies of report sent to NCCCS office
4. Employer Survey	Dean of IE	Once a year after the Graduate survey is finished	Copies of report sent to Director of Placement
5. (IPEDS) Integrated Postsecondary Education Data System	Dean of IE	Collection occurs in the fall and spring	Data sent to U.S. Department of Education and NCCCS
6. U.S. Higher Education Data Survey (NCHED)	Dean of IE	Collection occurs in the summer and fall	Data sent to UNC-GA and NCCCS
7. Curriculum Instructor Course Evaluation	Vice President of Curriculum Services	Once in the fall semester for every class and then in the spring semester as needed.	Copies of reports sent to the Curriculum Deans
8. Continuing Education Instructor Course Evaluation	Vice President of Continuing Education	Every class gets evaluations once a term	Copies of reports sent to Instructor Supervisors and eventually to the instructor
9. ACT Current Student Survey	Dean of IE/ Director of Grants	Once a year in the spring semester	Copies of reports are sent to the Vice President of Student Services.