

WAKE TECHNICAL COMMUNITY COLLEGE 2001 FACT BOOK

TABLE OF CONTENTS

Policy Statement	1
Purpose of this FACT BOOK	2
Mission Statement	3
Glossary	6
The College.....	11
Service Area: Wake County	33
Students	35
Continuing Education	50
Employees	58
Facilities	61
Comparisons	71

POLICY STATEMENT

AFFIRMATIVE ACTION/EQUAL OPPORTUNITY

Wake Technical Community College offers Equal Employment and Educational Opportunities to all employees, students, prospective employees, and prospective students.

Affirmative Action, Equal Educational Opportunities, and Compliance with the Americans With Disabilities Act are viewed by the Board of Trustees as an integral part of the mission and purpose of Wake Technical Community College.

Questions concerning this policy should be addressed to:

STUDENT MATTERS:

Dean of Students
Wake Technical Community College
9101 Fayetteville Road
Raleigh, NC 27603-5696

EMPLOYEE MATTERS:

Human Resources Manager
Wake Technical Community College
9101 Fayetteville Road
Raleigh, NC 27603-5696

Individuals with disabilities who need assistance or require special accommodations to access College activities should request such services in advance by calling Disability Support Services at (919) 662-3405 or (919) 779-0668 (TDD).

PURPOSE OF THIS FACT BOOK

This **Fact Book** is designed to provide the public whom we serve, college administrators, planners, and other selected individuals such as trustees, local commissioners, legislators, and key college friends with an easily readable compilation of data about the College. While some historical information is included, the data and facts provide a profile of the College for one year. Accumulations of data, such as data for the last five years, are included as appropriate to illustrate change or percent of change.

This book has been compiled by the College's Office of Institutional Effectiveness, Grants Development, and Special Projects under the direction of Dr. John B. Boone, Dean of Institutional Effectiveness, Grants Development and Special Projects.

Every effort has been made to make the **FACT BOOK** as error-free as possible. However, it will be greatly appreciated if typographical errors, incorrect data, and suggestions for improving the **FACT BOOK** are forwarded to the Office of Institutional Effectiveness, Grants Development and Special Projects, Room 143, Holding Hall. Ms. Tammy Stephenson may be reached at 662-3451 and Dr. John Boone at 662-3454

MISSION STATEMENT

The mission of Wake Technical Community College is to provide quality education and training for the workforce including vocational, technical, college/university transfer, and basic skills programs. The College is a public, two-year, comprehensive, post-secondary educational institution. The major purpose is and shall continue to be the offering of quality vocational and technical education and training. Through its open-door policy, the college offers educational opportunities to all adults regardless of age, sex, socio-economic status, ethnic origin, race, religion, or disability.

ROLE AND SCOPE

In order to implement its mission through clearly defined programs and services, the College:

offers credit programs leading to associate degrees, diplomas and certificates designed for immediate entry into employment, an associate degree in general education, and associate degrees designed to transfer to four-year institutions. The College also offers pre-curriculum programs for students to develop academic proficiency so that they may successfully complete curriculum courses.

provides occupational career enhancement programs for individuals and support for economic development to businesses, industries, and agencies. Basic skills education, English as a Second Language, and a wide variety of continuing education courses and programs for personal enrichment are offered on campus and throughout the county. The College further serves its constituents by providing a broad range of community services, partnerships and outreach programs.

provides a wide range of support services designed to assist students in successfully fulfilling their education and occupational goals. These services, developed to meet the diverse needs of individual students, begin with their initial contact with the College and continue throughout their enrollment and job placement or transfer for further study.

practices sound fiscal management and systematic planning to provide facilities, equipment, and state-of-the art technology to ensure quality education opportunities at secure facilities accessible to Wake County citizens.

OUR VISION

Wake Tech will be a leader among the 59 NCCCS institutions and will:

- ◆ strive for quality and excellence in all educational programs by closely monitoring students satisfaction and success through a comprehensive system of research and institutional effectiveness

- ◆ position itself as a primary choice of Wake County citizens for workforce development, occupational, college/university transfer, basic education, and lifelong learning opportunities.
- ◆ be a major partner in attracting new and expanding business and industry by emphasizing human resource development and technology transfer.
- ◆ maximize service to area citizens by listening and responding to changing educational needs.

COLLEGE GOALS

Student Success

Provide a dynamic learning environment to ensure successful achievement of students' goals by administering sound policies, curricula, instruction and support services.

Workforce Development

In collaboration with *Regional Economic Development Partnerships*, identify the workforce needs of emerging jobs in rural and urban economies in North Carolina. Develop and implement the educational and training programs necessary to meet the workforce needs of each region and college services area and promote recruitment, retention and development of high quality faculty and staff necessary to achieve the educational and training objectives of the community college system and provide North Carolina with a world-class workforce.

Diverse Populations Learning Needs

Provide North Carolina citizens with the opportunity to develop essential skills for lifelong learning. Upgrade and retrain North Carolina learners for the workplace through flexible, accessible, customized educational and training programs within their communities.

Resources

Continuously research, analyze and secure the resources necessary to fulfill the mission of the North Carolina Community College System and develop processes for measuring the effectiveness of resource allocations and utilization, within the North Carolina Community College System.

Technology

Encourage and support North Carolina Community College faculty and staff in the effective and efficient uses of instructional technology and administrative computing systems to improve the delivery of academic programs to North Carolina citizens.

Community Services

Provide courses and support service activities for the enrichment of the community's civic, economic, and cultural needs.

Southern Association of Colleges and Schools Accreditation

Wake Technical Community College is accredited by the Commission on Colleges of the Southern Association of Colleges and Schools (1866 Southern Lane; Decatur, Georgia 30033-4097; Telephone Number 404-679-4501) to award the associate degree.

GLOSSARY

Academic Extension (non-credit) Courses consist of single courses, each complete in itself, designed to serve the academic educational needs of adult citizens.

Academic Semester - A sixteen week period during which credit classes are offered.

Academic Year - The academic year includes fall and spring semesters as well as an eleven-week summer term.

Accreditation - A formal means of recognizing an institution for maintaining standards that qualify the graduate for admission to higher institutions or for professional practice. Accrediting agencies are responsible for establishing the standards and evaluating the school's compliance with them (e.g., Southern Association of Colleges and Schools, American Dental Association, Engineering).

Accountability - The acceptance of personal responsibility for the achievement of predetermined measurable objectives.

Adult Education - Programs offered by a community college or technical institute that provide opportunities for adults and out-of-school youth to further their education.

Associate in Applied Science Programs - These programs range from 64 to 76 semester hour credits. A full-time student can typically complete one of these programs within two years. In addition to major course work, associate in applied science degree programs require a minimum of 15 semester hour credits of general education. General education requirements include course work in communications, humanities/fine arts, social/behavioral sciences and natural sciences/mathematics. Certain courses in associate degree programs may be accepted by a four-year college or university for transfer credit in an associated field.

Average Annual FTE - The annualized FTE of the fall and spring semesters added together for a given year.

Example: One full-time equivalent (FTE) student represents 16 student membership hours per week for 16 weeks or 256 student membership hours for each semester enrolled. Thus, if:

Fall Semester = $\frac{1,301,151}{512}$ membership hours = 2541 FTE
512 membership hours annualized
(256 X 2 semesters = 512)

Spring Semester = $\frac{1,245,103}{512}$ = 2432 FTE

Average Annual FTE = 2541 (Fall)
+2432 (Spring)
4973

Avocational Extension (non-credit) Courses consist of single courses, each complete in itself, which focus on an individual's personal or leisure needs rather than his occupation, profession, or employment.

Basic Skills - One of the primary missions of Wake Tech is to offer educational opportunities for adults 16 years of age and older who are out of school. Wake Tech provides educational opportunities through five major literacy components, consisting of classes located at work sites, churches, community centers, schools, libraries, sheltered workshops, prisons and the community college campuses.

Adult Basic Education (ABE) - A program of basic skills for adults, 16 years of age or older and out of school, who function at less than a high school level.

General Educational Development (GED) - A high school equivalency program enabling adults to take the General Education Development Tests to determine if they are at the 12th grade completion level of English, social studies, science, reading, and math. Individuals achieving the required scores on the GED are awarded the High School Equivalency Diploma. The program is open to individuals 18 years or older.

Adult High School (AHS) - A program of instruction offered cooperatively with local public school systems to help students earn an adult high school diploma.

English as a Second Language (ESL) - A program of instruction to help adults with limited or no English language proficiency.

Compensatory Education - A special state-funded educational program for developmentally handicapped adults (over 17 years of age).

Base Budget - Appropriations made by the Legislature to fund the current level of operation.

Capital Outlay - Capital outlay expenditures are those that result in the acquisition of fixed assets or additions to fixed assets (i.e., expenditures for land, buildings, or equipment).

Categorical Funds (restricted) - Funds from a federal, state, local, or private source that are restricted to expenditures in a particular category or program.

Certificate Programs - These programs range from 12 to 18 semester hour credits and can usually be completed within one semester by a full-time student. Associate degree level courses within a certificate program may also be applied toward a diploma or an associate in applied science degree.

Certification - A voluntary form of recognition for knowledge and skill in a particular profession.

Clock Hour - One hour of instruction given one student. Class periods from 50-60 minutes may be counted as one clock hour depending on the type of instruction delivered.

College Transfer Programs - These programs are offered through the Associate in Arts, Associate in Fine Arts and Associate in Science degrees. The Associate in Arts and the Associate in Science programs are part of the Comprehensive Articulation Agreement (CAA). This agreement addresses the transfer of students between institutions in the North Carolina Community College System and the constituent institutions of the University of North Carolina System.

Community Service Programs consist of those continuing education (extension) programs that are directed to the academic, avocational, and development of personal skills of the community.

Competency-Based Instruction - Instruction based on measurable student performance outcomes consistent with the skills and knowledge needed by entry-level employees in a particular field.

Continuing Education/Extension Programs include New and Expanding Industry, and Self-Supporting Recreational programs in addition to the Regular Budget Extension program areas of Adult High School, Academic Extension, Avocational Extension, Occupational Extension, Practical Skills, Adult Basic Education and Compensatory Education.

Credit Hour - An instructional unit used for recognition of the amount of credit a student earns for a given course. Example: Semester Credit Hour - A student who spends one classroom hour per week in a class for sixteen weeks earns one semester hour credit.

Current Expense - Funds used for the general operation of the institution to include salaries, benefits, and other instructional costs.

Curriculum Programs - A term used to describe a wide variety of planned educational programs which range in length from one semester to two years. The programs lead to certificates, diplomas or associate degrees, depending on the nature of the curriculum. Curriculum programs include certificate, diploma, Associate in Applied Science, Associate in Arts, Associate in Fine Arts, Associate in Science and Associate in General Education programs.

Developmental Education - A program providing specialized credit courses for students who need to improve their basic skill in order to perform at the level required for admission to degree and diploma programs. Usually these courses are in reading, writing, and mathematics.

Diploma Programs - These programs range from 36 to 48 semester hour credits and can usually be completed by a full-time student within two semesters and one summer term. Associate degree level courses within a diploma program may also be applied toward an Associate in Applied Science degree.

English as a Foreign Language (EFL) A pre-curriculum program designed to help non-native speaking students acquire sufficient skills in English to enter and succeed in curriculum (academic) programs. These courses are available only on Wake Tech's 401 South Campus.

English as a Second Language (ESL) - A program of instruction to help adults with limited or no English language proficiency. These courses are usually offered through continuing education at off-campus sites for students who have non-academic goals such as improvement of job performance, better communication with family members or the general public, etc.

Expansion Budget - Additional funds from the Legislature to increase the quantity or quality of services rendered.

Fiscal Year - The twelve-month period upon which the institution's budget is based, July 1 - June 30.

Full-Time Equivalent (FTE) - One full-time equivalent (FTE) student represents 16 student membership hours per week for 16 weeks or 256 student membership hours for each semester enrolled.

Annual Curriculum FTE - The total of fall and spring FTE.

Annual Extension FTE - The total of spring, summer and fall sequenced periods FTE.

Budget Full-Time Equivalent (B/FTE) - Used to prepare the operating budget and to provide for an equitable distribution of the operating funds allocated by the State Board to the institutions.

Equipment Full-Time Equivalent (E/FTE) - Used to prepare the equipment budget and to provide for an equitable distribution of the equipment funds allocated by the State Board to the institutions.

Library Full-Time Equivalent (L/FTE) - Used to prepare the library budget to provide for an equitable distribution of library funds allocated for the purchase of library books and audiovisual materials.

Credit Hour Full-Time Equivalent (H/FTE) - Used in furnishing data to the North Carolina Commission on Higher Education Facilities and the University of North Carolina.

Construction Full-Time Equivalent (C/FTE) - Used to determine priorities and institutional eligibility for federal and state construction funds for the institutions.

Full-Time Students - A student is considered full time if he/she carries 12 or more semester credit hours of classes.

General Education Programs - These programs are designed for individuals wishing to broaden their education, with emphasis on personal interest, growth and development. The two-year General Education program provides students opportunities to study English, literature, fine arts, philosophy, social science, science and mathematics at the college level. All courses in the program are college-level courses. Many of the courses are equivalent to college transfer courses; however, the program is not principally designed for college transfer. Successful completion of 64-65 semester hour credits leads to an associate in general education degree.

Human Resources Development (HRD) - A program for chronically unemployed adults with prevocational training and counseling.

Job Training Partnership Act (JTPA) - A federal program designed to provide job training and employment opportunities for economically disadvantaged, unemployed, or underemployed persons.

Learning Laboratory Programs (Center) consists of resources to help students succeed in their courses of study at Wake Tech. A learning lab coordinator or instructor offers one-on-one tutorial assistance, combined with a variety of other techniques and materials such as audiovisual and computer equipment and self-instructional materials, in an effort to help students learn.

New and Expanding Industry Programs provide for the training needs of new industries which are moving into the state and also for existing industries undergoing a major expansion which result in the need for additional skilled manpower.

Non-Credit (Extension) Courses - Courses for professional training, upgrading or general interest.

Occupational Education - Any type of instruction or training (credit or non-credit) that prepares one to enter an occupation.

Other Costs - A term used to describe current instructional and operating instructional support costs excluding personnel and the associated fringe benefits. The term is used for supplies, travel, postage, etc.

Pell Grants - Needs-based federally funded grants.

Practical Skills Extension (non-credit) Programs consist of single courses each complete in itself, designed to provide practical training for persons pursuing additional skills which are not considered their major primary vocation but may supplement income or may reasonably lead to employment.

Regular Budget Extension Programs include Adult High School, Occupational Extension, Adult Basic Education and Compensatory Education.

Self-Supporting Recreational Programs are self-supporting courses which the college may provide at the request of the community but for which the college receives no budgetary credit.

Unduplicated Headcount - The total number of students (both full-time and part-time) enrolled in all courses during a year. Each student is counted only once during the year regardless of the number of classes he/she takes or the number of semesters for which he/she registers.

Source: A Matter of Facts, The North Carolina Community College System Fact Book, 1998.

Annual Statistical Report, 1998-1999, North Carolina Community College System.

THE COLLEGE

HISTORY OF WAKE TECHNICAL COMMUNITY COLLEGE

Wake Technical Community College is a public educational institution, nonprofit and tax supported, under the control of a Board of Trustees. It is an institutional member of the North Carolina System of Community Colleges, State Board of Community Colleges. Authority for the establishment of the College is found in Chapter 115D of the General Statutes of North Carolina and the amendments thereto.

The College was chartered April 3, 1958, as the Wake County Industrial Education Center under the governance of the Wake County Board of Education. In 1961, the Board employed Dr. Kenneth M. Wold as the Center's first Director and charged him with the responsibility of "developing a program of training for adults."

Because there was no central training facility, the first training efforts were conducted in cooperation with employers and users of the training. Practical nursing classes, for example, were held at Wake Memorial Hospital; fire prevention and lifesaving classes were held among area fire departments; and instruction in machine operating and supervision was provided at industrial locations.

On October 7, 1963, operation of the Center began at its present location in a single building of 40,795 square feet and costing \$560,000. There were 34 full-time students enrolled in classes on campus and an additional 270 enrolled in industrial training programs at locations throughout the County.

On January 8, 1964, the Center was formally dedicated as the W. W. Holding Industrial Education Center and was transferred from the authority of the Board of Education to an eight-member Board of Trustees.

In September 1965, Dr. Kenneth M. Wold resigned as Director, and Robert W. LeMay, Jr., head of the Center's general adult and community service programs, was named Acting Director. Mr. LeMay was named President on February 16, 1966.

On March 3, 1966, W. W. Holding Industrial Education Center was granted approval by the State Board of Education as the W. W. Holding Technical Institute.

The name was changed to Wake Technical Institute in 1974 and to Wake Technical College on March 1, 1980. The name was changed to Wake Technical Community College on December 1, 1987, to better reflect the college-level instruction that is provided.

Robert W. LeMay, Jr., served as President through June 30, 1979, at which time James A. Cox, the College's Vice President for Administration, was appointed temporary President. He served until June 30, 1980.

Dr. Bruce I. Howell was named the College's third President on July 1, 1980.

The College has grown since 1963 from the one building of 40,795 square feet to three campuses and facilities that include twenty-two permanent structures totaling over 500,000 square feet.

Today these facilities and a staff and faculty of just over 490 people serve a curriculum unduplicated headcount of approximately 12,000. When non-credit instruction is added to the College's service to Wake county citizens, approximately 44,000 persons take one or more courses annually.

The College entered a contractual agreement with the University of North Carolina at Greensboro to offer college transfer courses in the fall of 1991. Subsequently, a college transfer program was approved to be offered by Wake Tech in the fall quarter of 1992. Students enrolled in the College Transfer program earn Associate in Arts and Associate in Science degrees. The College became a fully comprehensive community college in the fall of 1992.

The Wake Technical Community College News and Observer Adult Education Center formally opened in August 1993. The Center was made possible through a \$100,000 gift from the News and Observer Foundation. Located on Capital Boulevard, the Center provides a home for the College's basic skills program, one of the largest in the North Carolina Community College System. The Adult Education Center also is the headquarters for Wake Tech's Small Business Center.

Wake Tech's share of county and state bond referendums held in 1993 was \$41 million. These funds were designated to build a student education/classroom building, connect the main campus to Fuquay-Varina's waste water treatment plant, construct a parking deck at the Health Education Campus, and renovate and repair existing facilities. During the summer of 1994, construction began on the student education/classroom building, and it was opened on December 3, 1996.

In January 1994, Wake Tech acquired 132 acres of land on Highway 401 North for a site for a northeast Wake County campus. This campus will serve the residents of northern Wake County. Wake Tech was designated a multi-campus college by the State Board of Community Colleges on February 16, 1996.

After a two-year in-depth self-study and an on-site visit by collegiate peers from across the southeastern United States in March 1995, Wake Tech's accreditation to award the associate degree was reaffirmed by the Commission on Colleges of the Southern Association of Colleges and Schools for another ten years.

In the fall of 1997, Wake Tech, along with the other 57 colleges of the North Carolina Community College System, converted from the quarter system to the semester system.

On June 19, 1998, the State Board of Community Colleges approved Wake Tech's request to change the Allied Health Center to the Health Sciences Campus.

In 2001 Wake Tech purchased 12 acres adjacent to Tech Road (SR 2811) and the US 401 South Main Campus for the construction of additional parking spaces for faculty, staff and students.

FACILITIES GROWTH

When Wake Tech opened in 1963, there was one building of 40,795 square feet on a 30.8 acre tract. This building, named in honor of W. W. Holding, a long-time member of the Wake County Board of County Commissioners, was twice enlarged to its present size of 43,348 square feet.

In 1966-67, a maintenance shop and a laboratory building of 8,990 square feet were added to the campus. Additional property was purchased between 1968 and 1972, which increased the campus size to 76.64 acres.

In 1968, the business education building of 22,540 was constructed and named in honor of Leo Pucher, the College's first Board of Trustees Chairman who was also instrumental in founding the College. Also, vocational laboratories were expanded in 1968 and a 36,405 square-foot addition, which was named in honor of Dr. I. E. Ready who was Director of the Department of Community Colleges, was completed.

Two buildings and approximately 3.5 acres adjacent to Wake Medical Center were dedicated in 1972 by the Wake County Commissioners for health education. Subsequently, a power mechanics laboratory building was completed in 1974 on the main campus.

By 1975, a student services building of 28,066 square feet was constructed for the rapidly increasing student body. This facility was named in honor of Robert W. LeMay who served as President from 1966 until 1979.

Maintenance and storage facilities were added in 1980.

The technical education building, occupied in 1982, provides 40,860 square feet of classroom, laboratory and auditorium space for the conduct of technical education.

The College continued to grow with a 8,320 square-foot microelectronics laboratory addition completed in early 1984.

A mechanical technology building was completed in 1987. In approximately 16,980 square feet of space, this building provides space for a machine shop, two automation/robotics laboratories, and three classrooms.

In late 1988, construction was completed on a 84,000 square-foot library education building. This building features a 28,000 square-foot library with study rooms, drafting and typing labs; an enlarged audiovisual area with a new studio and two darkrooms; two architectural drafting labs; and 36 additional classrooms.

The 1990-91 school year was a busy one for campus construction. A 16,600 square-foot child care center was completed. It includes classrooms, offices, child care areas, and a full-service kitchen. Also, a 32,000 square-foot health education building that houses a library, offices, classrooms, and laboratories was completed. Additional parking was provided for both facilities.

In August 1993, the College, with the assistance of a \$100,000 gift from the News and Observer Foundation, opened the News and Observer Adult Education Center. Located on Capital Boulevard, the Center provides a home for the College's basic skills program, one of the largest in the North Carolina Community College System, and is also the headquarters for Wake Tech's Small Business Center. The 21,545 square-foot leased building, previously occupied by Hardbarger Business College, includes 12 classrooms, three computer labs, a student lounge, ten offices, a seminar/conference room, and a full resource center with individualized learning materials.

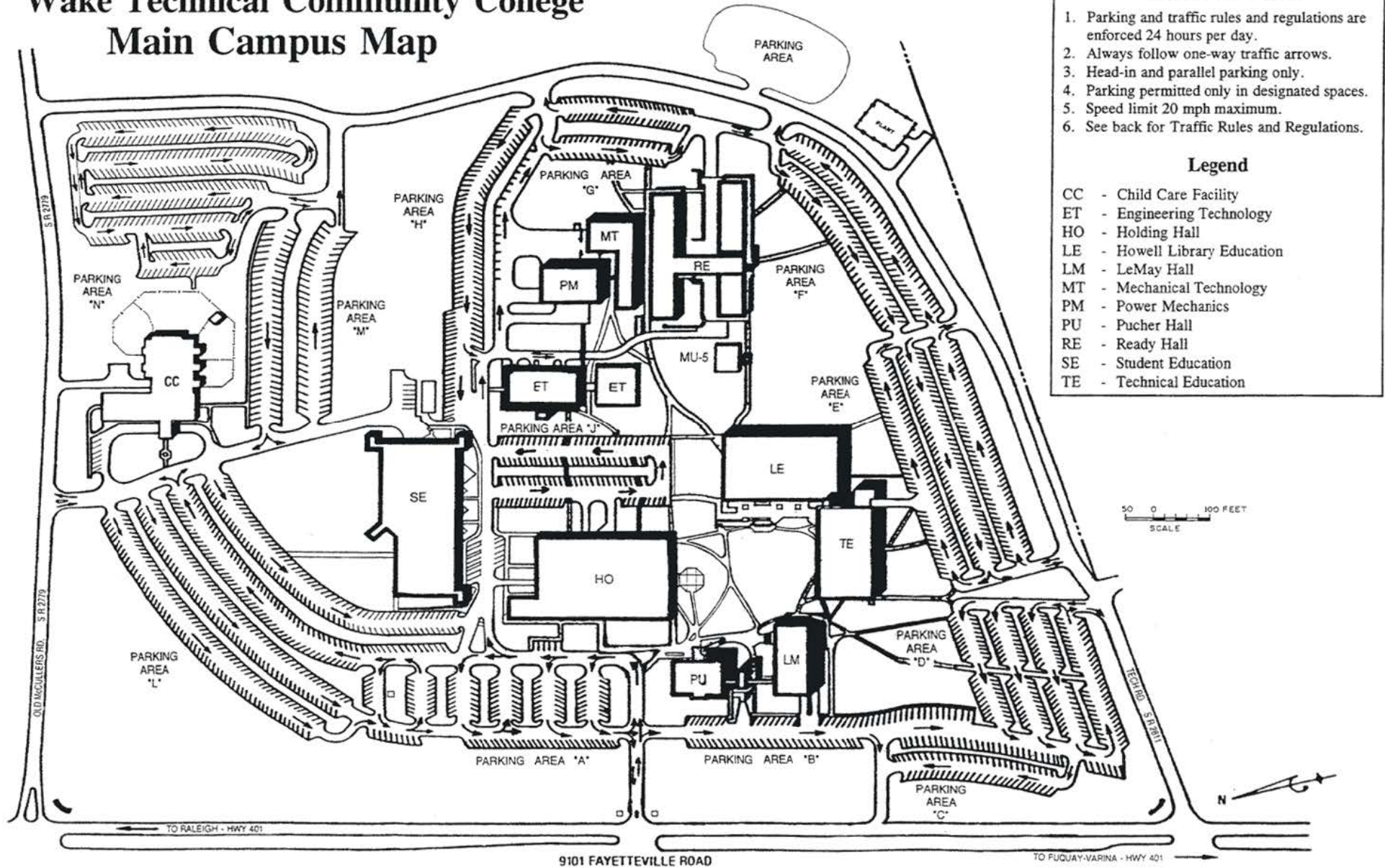
In 1996, Wake Tech opened a parking deck at the Health Sciences Campus and a 110,000 square-foot Student Education building on Main Campus. The Student Education building houses the Hotel and Restaurant Management and Culinary Arts programs and the kitchens and other facilities necessary for those programs, a conference center, and new cafeteria.

During the summer of 1998, the College purchased the Wells Furniture Company property at the corner of U.S. 401 south and Tech Road (SR 2811). This adds 14,200 square feet to the College's facilities inventory.

The College currently owns 509,779 gross square feet (exterior wall measurement), of which 22,260 is leased and 363,626 square feet are assignable to, or available for assignment to, an occupant or specific use.

In 2001 Wake Tech purchased 12 acres and constructed additional parking spaces adjacent to Tech Road (SR 2811) behind the Wells Furniture Company property.

Wake Technical Community College Main Campus Map



Parking and Traffic

1. Parking and traffic rules and regulations are enforced 24 hours per day.
2. Always follow one-way traffic arrows.
3. Head-in and parallel parking only.
4. Parking permitted only in designated spaces.
5. Speed limit 20 mph maximum.
6. See back for Traffic Rules and Regulations.

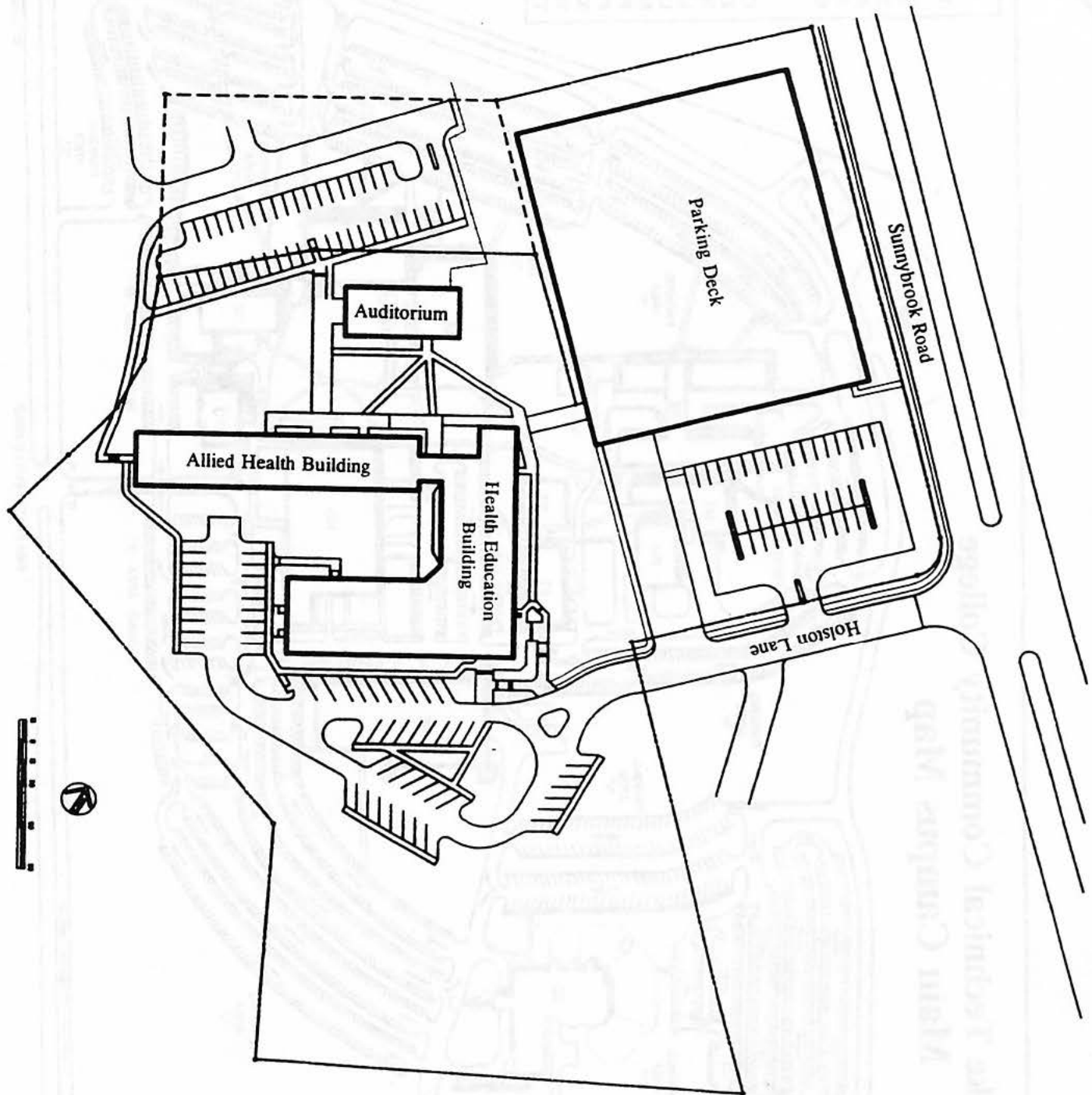
Legend

CC	- Child Care Facility
ET	- Engineering Technology
HO	- Holding Hall
LE	- Howell Library Education
LM	- LeMay Hall
MT	- Mechanical Technology
PM	- Power Mechanics
PU	- Pucher Hall
RE	- Ready Hall
SE	- Student Education
TE	- Technical Education

Wake Technical Community College

Health Sciences Campus Plan

Raleigh, North Carolina



MEMBERS OF THE BOARD OF TRUSTEES

	<u>Beginning of Term</u>	<u>End of Term</u>
** Lide Cooke Anderson	July 1993	June 2001
Robert J. Barker	June 1995	June 2001
Doris M. Burke	June 2000	June 2004
Johnny I. Farmer	October 1995	June 2003
Barbara T. Flood	July 1990	June 2001
George N. Hamrick	June 1998	June 2002
Henry C. Knight	June 1998	June 2002
Paul M. Maulsby	October 1995	June 2003
Harvey L. Montague	July 1996	June 2004
Joy E. Paige	July 1999	June 2003
* Don H. Perry	January 1993	June 2002
James O. Roberson	July 1996	June 2004
President, Student Government Association		

FORMER MEMBERS OF THE BOARD OF TRUSTEES

**/*	Lawrence E. Allen, Sr.	July 1975	June 1995
/	William D. Ashley	November 1965	June 1973
	Joseph S. Ashworth	July 1989	February 1995
***	Thomas R. Ashworth	June 1977	June 1989
***	W. W. Balentine	October 1963	June 1965
	M. Grant Batey, Sr.	July 1981	June 1990
***	A. L. Becker	September 1967	June 1975
	David B. Bell, Jr.	July 1985	June 1996
***	W. Jennings Booth, Sr.	August 1975	September 1986
	Ralph G. Brashear	October 1979	June 1985
	Joan H. Burkhardt	July 1990	June 1998
**	Donald H. Carpenter	August 1971	June 1979
	Harry K. Clark, II	February 1974	November 1978
***	F. Roland Danielson	July 1977	September 1979
	C. P. Dean	November 1965	June 1977
	Paul A. DelaCourt	August 1967	June 1975
***	Anthony DeLisse	February 1965	June 1977
***	W. G. Enloe	December 1965	June 1966
***	Emol A. Fails	January 1976	May 1978
	Ralph E. Forrest	June 1978	June 1991
/	Mary M. Gentry	August 1971	June 1987
	William T. Graham	July 1995	June 1999

***	T. M. Grimes	October 1963	June 1971
	W.H. (Buddy) Holding	July 1979	June 1992
	Joseph Q. Holliday	September 1967	June 1977
***	William W. Johnson	October 1963	June 1967
	Walter M. Keller	February 1987	June 1995
	John W. Liles, Jr.	August 1966	June 1967
	E. A. Loeser	November 1965	December 1966
	Harold W. Miller	July 1987	June 1996
	Douglas Y. Perry	July 1969	June 1990
	Hal C. Perry	July 1965	April 1969
**	Robert A. Pittillo, Jr.	December 1963	June 1967
*/***	Leo E. Pucher	October 1963	June 1979
	Phillip O. Redwine	January 1970	June 1977
***	Carter S. Schaub	October 1963	June 1973
	Lee C. Smith	November 1965	August 1966
	Melba T. Sparrow	July 1987	April 1993
	Jack M. Stancil	July 1996	June 2000
*	James P. Swindell	July 1977	June 1997
	William F. Troxler	July 1979	June 1987
	Harold H. Webb	July 1973	June 1981
	Willi T. Webb	July 1991	June 1995
	James C. Wheeler	July 1990	December 1992
***	C. V. Whitley	October 1963	June 1965
	Cliffornia Wimberley	January 1979	June 1990
***	W.L. Woodard	July 1967	June 1975

*Chairman

**Vice-Chairman

***Deceased

WAKE TECHNICAL COMMUNITY COLLEGE FOUNDATION, INC.

Wake Technical Community College Foundation is a 501 (c) (3) nonprofit corporation established to serve as a conduit for a strong financial partnership with the private sector, supporting the community mission of Wake Technical Community College with gifts of cash and in-kind contributions of equipment and services that enhance the College's ability to fulfill its mission.

A 26-member Board of Directors comprised of community and business leaders in the Triangle area promote and administer a variety of funds from the private sector, including:

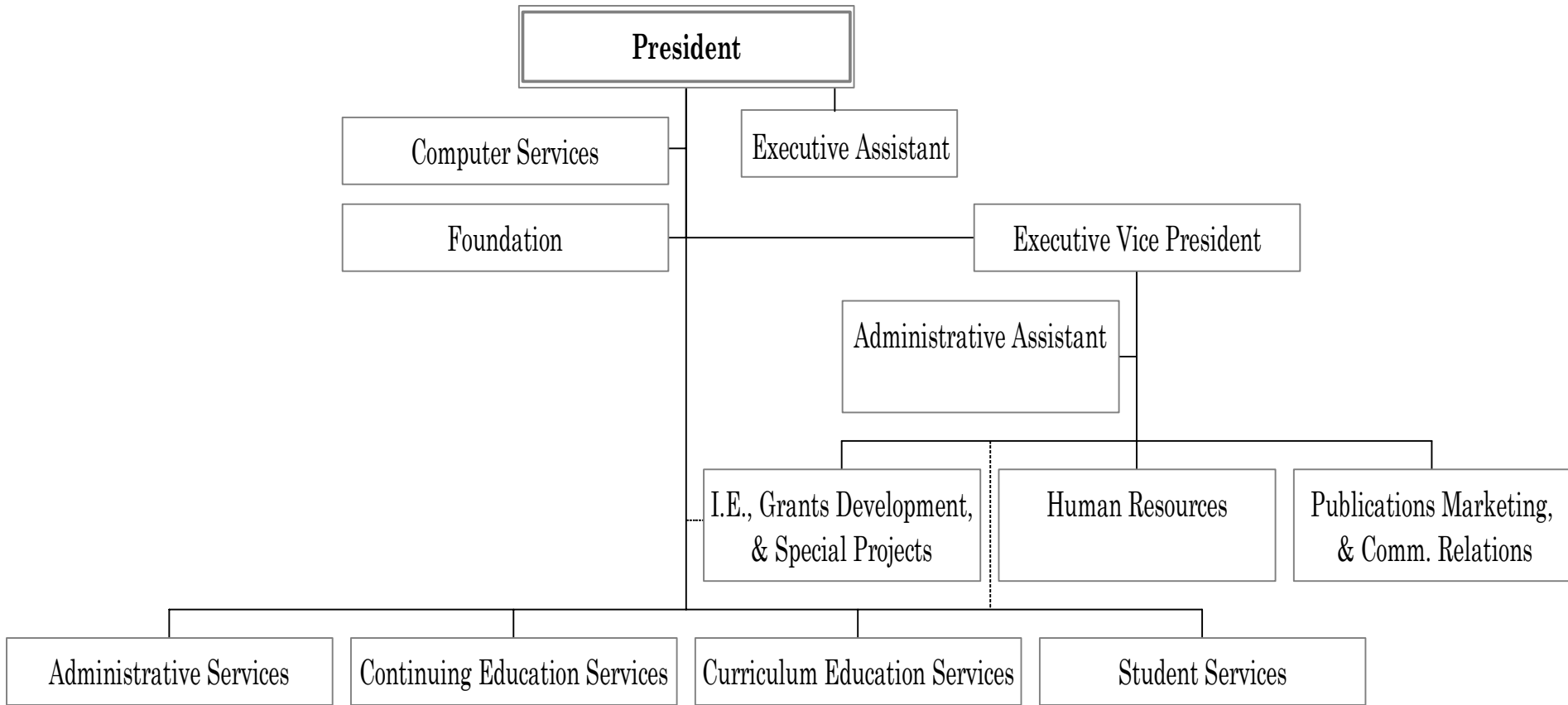
The Wake Tech Fund is the general fund that supports programs that receive limited or no support from traditional tax revenues, including institutional opportunities, student scholarships, financial aid grants, professional development needs of faculty and staff, the acquisition of state-of-the-art equipment and other areas that elevate the College's service role in the community to a greater prominence.

Donor-Restricted Funds benefit the interests of the donor as well as the College by providing restricted gifts to specific academic programs and scholarships that accommodate and address certain employment needs.

Endowment Funds are often established through various estate or major gifts which qualify for special tax consideration, creating permanent funds from which the interest income can be allocated to a specific area or serve as a source of supplemental revenues to state and local taxation.

Gifts-in-Kind from business and industry enhance and improve the quality of Wake Tech's instructional programs and labs with equipment that keeps technology current and instruction up to industry standards.

Since 1988, corporations, businesses, alumni, friends, trustees and employees have strengthened Wake Tech's programs with cash and noncash gifts to Wake Technical Community College Foundation totaling nearly \$5 million.



MEMBERSHIPS, APPROVALS, AND ACCREDITATIONS

The College Is A Member Of:

American Association of Collegiate Registrars and Admissions Officers
American Association of Community Colleges
American Association for Higher Education
American Technical Education Association
Association of Collegiate Schools of Architecture
Association of community College Trustees
Association on Higher Education and Disability
Carolinas Association of Collegiate Registrars and Admissions Officers
Chamber of Commerce--Apex
Chamber of Commerce--Cary
Chamber of Commerce--Fuquay-Varina
Chamber of Commerce--Garner
Chamber of Commerce--Knightdale
Chamber of Commerce--Morrisville
Chamber of Commerce--Raleigh
College and University Mail Services
College Board
College News Association of the Carolinas
Community College Leadership Institute
Community Education Network
Cooperative Education Association, Inc.
Council on Hotel, Restaurant, and Institutional Education
National Alliance of Community and Technical Colleges
National Association for Adults with Special Learning Needs
National Association for Foreign Student Affairs
National Association of Colleges and Employers
National Association for Student Financial Aid Administrators
National Commission for Cooperative Education
National Council for Marketing and Public Relations
National Council for Research and Planning
National Council for Student Development
National Initiative for Leadership and Institutional Effectiveness
National League for Nursing
National Prime Users Group
National Restaurant Association
National Safety Council
North Carolina Association of Colleges and Universities
North Carolina Association of Community College Business Officials
North Carolina Association of Community College Trustees
North Carolina Association of Coordinators of Veterans Affairs
North Carolina Association on Higher Education and Disability
North Carolina Bar Association
North Carolina Citizens for Business and Industry

North Carolina Restaurant Association
Project Seraphim
Raleigh-Wake Personnel Association
Society for Human Resource Management
Southeastern Association of Colleges and Employers
Southeastern Testing Association
Southern Association of Collegiate Registrars and Admissions Officers
Southern Association of Community, Junior, and Technical Colleges
Travel Council of North Carolina
Wake County Interagency Council for the Homeless
Wake County Interagency Council for Youth

The College Is Approved By:

Division of Vocational Rehabilitation
Insurance Agents Pre-Licensing Education Program
North Carolina Department of Insurance
North Carolina Office of Emergency Services
North Carolina Real Estate Licensing Board
North Carolina State Approving Agency for Veterans Education and Training
North Carolina State Board of Community Colleges

The College Is Accredited By:

Wake Technical Community College is accredited by the Commission on Colleges of the Southern Association of Colleges and Schools (1866 Southern Lane, Decatur, Georgia 30033-4097; Telephone Number (404) 679-4501 to award the associate degree.*

North Carolina Criminal Justice Education and Training Standards Commission

The College Has Certain Programs Accredited By:

Accreditation Board for Engineering Technology**
Commission on Dental Accreditation, American Dental Association***
Committee on Allied Health Education and Accreditation:
 American Association of Medical Assistant's Endowment
Joint Review Committee on Education in Radiologic Technology
 National Accrediting Agency for Clinical Laboratory Sciences
North Carolina Board of Nursing
The Medical Assisting Program is accredited by the Commission on Accreditation of Allied Health Education Programs (CAAHEP); on recommendation of the Committee on Accreditation for Medical Assistant Education****

*When it is appropriate to refer to the status between Wake Technical Community College and the Commission on Colleges in catalogs, brochures, and advertisements, the following statement is to be used: **"Wake Technical Community College is accredited by the Commission on Colleges of the Southern Association of Colleges and Schools (1866 Southern Lane, Decatur, Georgia**

30033-4097; Telephone Number (404) 679-4501) to award the associate degree."

****Five of Wake Technical Community College's Engineering Technology curriculums are nationally accredited by the Technology Accreditation Commission of the Accreditation Board for Engineering and Technology, Inc. The programs are Automation/Robotics Technology, Civil, Computer, Electronics and Mechanical Engineering Technology.**

*****The program in Dental Assisting is accredited by the Commission on Dental Accreditation of the American Dental Association.**

******aka The Curriculum Review Board of the American Association of Medical Assistants' Endowment (AAMAE).**

AREAS OF STUDY

ARTS AND SCIENCES

A10100 - Associate in Arts Degree

(for transfer to university liberal arts programs)

A10400 - Associate in Science Degree

(for transfer to university science and engineering programs)

A10300 - Associate in General Education Degree

BUSINESS EDUCATION

Associate in Applied Science Degree:

A25100 - Accounting

A25120 - Business Administration

A2512C - Business Administration/Human Resources Management

A55180 - Criminal Justice Technology

A55200 - Culinary Technology

A55220 - Early Childhood Associate

A25240 - Hotel and Restaurant Management

A25310 - Medical Office Administration

A25360 - Office Systems Technology

A2536A - Office Systems Technology/Legal

Diploma:

D55220A - Early Childhood Associate

D25360A - Office Systems Technology

Certificate:

C25120A - Business Administration: Customer Service

C25120A - Business Administration: Sales Development

C2512CA - Business Administration: Human Resources Management

C55200A - Culinary Technology

C55220B - Early Childhood Associate

C25360B - Office Systems Technology: Word Processing

C25400A - Real Estate

C25420 - Real Estate Appraisal

ENGINEERING TECHNOLOGY

Associate in Applied Science Degree:

A40100 - Architectural Technology

A40120 - Automation/Robotics Technology

A40140 - Civil Engineering Technology

A40160 - Computer Engineering Technology

A40200 - Electronics Engineering Technology
A4020A - Electronics Engineering Technology/Instrumentation
A20140 - Environmental Science Technology
A40240 - Industrial Engineering Technology
A20180 - Industrial Pharmaceutical Technology
A40260 - Landscape Architecture Technology
A40300 - Manufacturing Engineering Technology
A5032A - Manufacturing Technology/Plastics
A40320 - Mechanical Engineering Technology
A40360 - Scientific Graphics Technology
A40380 - Surveying Technology
A40400 - Telecommunications and Network Engineering Technology

Certificate:

C40100A - Architectural Technology: Architectural CAD
C40120A - Automation/Robotics Technology: Industrial Controls
C40160B - Computer Engineering Technology: C Language Programming
C40160C - Computer Engineering Technology: Personal Computer Specialist
C40160A - Computer Engineering Technology: UNIX System Management and Programming
C40200A - Electronics Engineering Technology: Basic Electronics
C40240A - Industrial Engineering Technology: Industrial Management
C40400 - Telecommunications and Network Engineering Technology: Basic
Telecommunications Electronics
C40400B - Telecommunications and Network Engineering Technology: Data Networking
Technology
C40400C - Telecommunications and Network Engineering Technology: Telecommunications
Switching

COMPUTER INFORMATION SYSTEMS

Associate in Applied Science Degree:

A25130 - Computer Programming
A25260 - Information Systems
A2526B - Information Systems: Helpdesk and Support Technology
A25290 - Internet Technologies
A25340 - Networking Technology

Certificate:

C25130C - Computer Programming: C++ Programming
C25130D - Computer Programming: Oracle Programming
C25130A - Computer Programming: Internet Programming
C25130B - Computer Programming: Visual Basic Programming
C25260F - Information Systems: Database Management
C25260C - Information Systems: Graphics Design
C25260G - Information Systems: Hardware Troubleshooting/Repair
C25260D - Information Systems: Networking
C25260A - Information Systems: Office Applications
C25260E - Information Systems: Spreadsheet Management

C25260B - Information Systems: Technical Word Processing
C25260H - Information Systems: Web Developer
C25340C - Networking Technology: CISCO Certificate
C25340D - Networking Technology: Internet Administration
C25340F - Networking Technology: Linus/Red Hot Administration
C25340A - Networking Technology: MCSE
C25340B - Networking Technology: Novell Administration
C25340E - Networking Technology: SQL Server Administration

HEALTH SCIENCES

Associate in Applied Science Degree:

A45120 - Associate Degree Nursing
A45340 - Emergency Medical Science
A45380 - Human Services Technology
A4538A - Human Services Technology/Developmental Disabilities
A4538E - Human Services Technology/Substance Abuse
A45420 - Medical Laboratory Technology
A45700 - Radiography

Diploma:

D45240 - Dental Assisting
D45400A - Medical Assisting

Certificate:

C45480 - Nursing Assistant
C45600 - Phlebotomy
C55280 - General Occupational Technology

VOCATIONAL TECHNOLOGY

Associate in Applied Science Degree:

A35220 - Electrical/Electronics Technology
A50120 - Electronic Servicing Technology
A6024B - Heavy Equipment and Transport Technology/Construction Equipment Systems
A50240 - Industrial Maintenance Technology
A50300 - Machining Technology
A5030A - Machining Technology/Tool, Die and Mold Making
A50340 - Mechanical Drafting Technology

Diploma:

D35100A - Air Conditioning, Heating and Refrigeration Technology
D60160A - Automotive Systems Technology
D35220A - Electrical/Electronics Technology
D50120A - Electronic Servicing Technology
D6024BA - Heavy Equipment and Transport Technology/Construction Equipment Systems
D50240A - Industrial Maintenance Technology
D50300A - Machining Technology

D50340A - Mechanical Drafting Technology

D35300 - Plumbing

D50420A - Welding Technology

Certificate:

C35100B - Air Conditioning, Heating and Refrigeration Technology

C55120 - Basic Law Enforcement Training

C35220C - Electrical/Electronics Technology: Commercial Wiring Methods

C35220B - Electrical/Electronics Technology: Residential Wiring Methods

C60224BB - Heavy Equipment and Transport Technology/Construction Equipment Systems:
Hydraulics, Engines and Transmissions

C6024BC - Heavy Equipment and Transport Technology/Construction Equipment Systems:
Fuel Injection, Electrical and Electronics

C50240B - Industrial Maintenance Technology

C50300B - Machining Technology

C5030A - Machining Technology/Tool, Die and Mold Making: Mold Making

C50340B - Mechanical Drafting Technology

C35300B - Plumbing: Modern Plumbing, Codes and Blueprint Reading

C35300A - Plumbing: Plumbing Applications and Diagrams

C50420B - Welding Technology

COLLEGE COMMITTEES

Executive Council

President, Chairman
Vice Presidents
Administrative Employees who report to the President
Staff Council President
Faculty Association President

Curriculum Education Services Council

Vice President of Curriculum Education Services, Chairman
Curriculum Education Deans
Dean of Evening Programs

Continuing Education Services Council

Vice President of Continuing Education Services, Chairman
Continuing Education Deans
Continuing Education Directors, Coordinators, and Instructional Supervisors are invited and encouraged to attend meetings.

Planning Council

President, Chairman
Executive Council
Faculty Association Representatives
Staff Council Representative
Basic Skills Representatives

Staff Council

Staff Council President
One representative for every 10 eligible staff employees in a given service area

Drug and Substance Abuse Council

Department of Criminal Justice faculty member, Chairman
Human Resources Manager
Dean of Students
Manager of Security
One Counselor
One representative from Continuing Education Division
One faculty member from each Curriculum Division

Curriculum Committee

Vice President of Curriculum Education Services, Chairman
Curriculum Education Deans
The Registrar
Director of Cooperative Education

Educational Support Services Advisory Committee

Dean, Educational Support Services, Chairman
Director of Library Services
Health Sciences Librarian
Head of Individualized Learning Center
Head of English as a Foreign Language
Director of Audiovisual
One Representative from Continuing Education
One Representative from Howell Library
One full-time student appointed by the Student Government Association President
Six full-time faculty members--one representing each academic division

Health, Safety, and Security Committee

Manager of Security, Chairman
Facilities Manager
Dean of Students
Dean of Evening Programs
Business Manager
One student recommended by the Student Government Association
Two instructors from the Main Campus
One instructor from the Health Education Campus
One Representative recommended by the Continuing Education Services Council

Institutional Effectiveness (IE) Advisory Committee

Dean of IE, Grants Development and Special Projects, Chairman
Curriculum Education Services SGA President
Continuing Education
Student Services
Administrative Services
Adult Education Center Campus
Health Science Campus Representative
Faculty Association President
Staff Council Member

Instructional Computer Services Advisory Committee

Vice President of Computer Services, Chairman
Vice President of Curriculum Education Services
Vice President of Continuing Education Services
Dean of Computer Information Systems
Dean of Engineering Technology

Faculty Association

One faculty member serves as President, Vice President, Secretary

The Faculty Association is open to all Wake Technical Community College full-time faculty

WAKE TECHNICAL COMMUNITY COLLEGE
FUNDING GROWTH LAST 10 YEARS
Educational and General Expenditures by source of Funds

Year	State	%	County	%	Other	%	Total
1991-92	14,524,305	71	4,767,000	23	1,226,214	6	20,517,519
1992-93	16,642,145	72	4,917,000	21	1,553,940	7	23,113,085
1993-94	16,970,124	71	5,032,970	21	1,876,193	8	23,879,287
1994-95	18,414,785	73	5,087,554	20	1,665,442	7	25,167,781
1995-96	18,986,857	73	4,909,382	19	2,011,909	8	25,907,329
1996-97	19,817,427	71	5,886,100	21	2,128,826	8	27,832,353
1997-98	21,128,693	71	6,435,000	21	2,333,350	8	29,987,043
1998-99	23,827,482	72	6,800,000	20	2,594,776	8	33,222,258
1999-00	27,968,018	72	7,202,000	19	3,383,705	9	38,553,723
2000-01	31,730,476	74	7,810,000	18	3,496,031	8	43,036,507

Office of Research (Does not include Capital and Construction Budgets)

MARCH 2001

Source: Wake Technical Community College Controller's Office Current Operating Budget

**SERVICE AREA:
WAKE COUNTY**

SOCIOECONOMIC AND DEMOGRAPHIC INDICATORS FOR WAKE COUNTY

LAND AREA IN SQUARE MILES	833.98
Density (Persons per square mile)	752.83

PERSONS (As of April, 2000 – U.S. Census Bureau)

Total County Population	627,846	
Total Incorporated Population	458,642	73.05%
Total Unincorporated Population	169,204	26.94%
18 and Over	470,249	

MUNICIPAL POPULATION, APRIL 2000

Municipality	1990 Census	2000 Census	Percent Change April 1990 to April 2000
APEX	4,789	20,212	322.0
CARY	44,397	94,536	112.9
FUQUAY VARINA	4,447	7,898	77.6
GARNER	14,716	17,757	20.6
HOLLY SPRINGS	1,024	9,192	797.6
KNIGHTDALE	1,884	5,958	216.2
MORRISVILLE	1,489	5,208	249.7
RALEIGH	212,092	276,093	30.1
ROLESVILLE	572	907	58.5
WAKE FOREST	5,832	12,588	115.8
WENDELL	2,921	4,247	45.3
ZEBULON	3,173	4,046	27.5

OFFICE OF RESEARCH/MARCH 2001/SOURCE: U.S. CENSUS BUREAU

STUDENTS

WAKE TECHNICAL COMMUNITY COLLEGE

UNDUPLICATED HEADCOUNT

LAST 10 YEARS

Year	Continuing Education	Curriculum	Total
1989-1990	27,354	10,852	38,206
1990-1991	25,413	10,983	36,396
1991-1992	26,421	11,805	38,226
1992-1993	28,073	11,759	39,832
1993-1994	30,129	11,796	41,925
1994-1995	32,315	12,228	44,543
1995-1996	31,948	11,988	43,936
1996-1997	32,606	11,622	44,228
1997-1998	33,165	10,905	44,070
1998-1999	38,432	12,083	47,413
1999-2000	35,808	13,343	46,135

OFFICE OF RESEARCH Note: State fund reversions caused classes to be cancelled in 1990-91.

MARCH 2001

SOURCE: ANNUAL STATISTICAL REPORTS, 2000 FACT BOOK, SYSTEM ANNUAL REPORTS, NCCCS

WAKE TECHNICAL COMMUNITY COLLEGE

AVERAGE ANNUAL FULL TIME EQUIVALENT (FTE)

Academic Years	FTE
1989-1990	5,541
1990-1991	5,347
1991-1992	5,639
1992-1993	5,884
1993-1994	5,732
1994-1995	5,809
1995-1996	5,908
1996-1997	5,668
1997-1998	6,848
1998-1999	7,745
1999-2000	8,292

AVERAGE COST PER FTE ANALYSIS YEAR ENDING JUNE 30, 1999

	<u>Wake Tech</u>	<u>System</u>
General Administration	\$ 137.03	259.40
Instruction-Curriculum	2,547.18	2,782.51
Instruction Non-Curriculum	2,790.07	3,024.67
Learning Resources	94.30	143.16
Student Services	348.84	354.46
Plant Operation & Maintenance	0 .00	3.64
General Institution	125.86	401.65

OFFICE OF RESEARCH

MARCH 2001

SOURCE: (AVERAGE ANNUAL FULL TIME EQUIVALENT) ANNUAL STATISTICAL REPORT, 1998-1999, NCCCS

SOURCE: (AVERAGE COST PER FTE ANALYSIS) NCCCS FACT BOOK 2000

WAKE TECHNICAL COMMUNITY COLLEGE
CURRICULUM FTE LAST 5 YEARS
QUARTER SYSTEM ENDED 1996-1997
SEMESTER SYSTEM BEGAN 1997-1998

Year	Fall	Winter	Spring	Summer
1995-96	5,021	4,254	4,235	1,911
1996-97	5,034	4,396	4,193	741
1997-98	2,541	0	2,432	844
1998-99	2,830	0	2,716	844
1999-2000	3,029	0	2,903	875

OFFICE OF RESEARCH, NOTE: There is no Winter Term under the Semester System. For an explanation of Semester System FTE, see the Glossary. To compare with the Quarter System, you must add the Fall and Spring Semesters together.

MARCH 2001

SOURCE: WAKE TECHNICAL COMMUNITY COLLEGE REGISTRAR

WAKE TECHNICAL COMMUNITY COLLEGE

STUDENT FINANCIAL AID

1999-2000

GRANTS, GIFT AWARDS SCHOLARSHIP	NUMBER OF STUDENTS	TOTAL DOLLARS	AVERAGE PER RECIPIENT
FSEOG	43	30,091	700
PELL GRANT TOTAL	1,352	2,280,074	1,686
<u>EMPLOYMENT</u>			
FWS	34	41,542	1,221
VOCATIONAL REHABILITATION	214	96,743	452
VETERANS ADMINISTRATION	300	1,367,843	4,559
JOB TRAINING PARTNERSHIP ACT (JTPA)	73	35,416	485
<u>EXTERNAL SOURCES OF AID</u>			
<u>LOANS (STAFFORD)</u>			
SUBSIDIZED	445	939,363	2,482
UNSUBSIDIZED	390	1,133,332	
FPLUS	6	15,137	2,523
NCNESLP	25	33,300	1,332
NCHSM	5	12,000	2,400
NCSIG	16	3,405	212
NCSIE	228	65,386	287
TOTAL	3,131	6,053,632	18,339

Abbreviations used in this report are:

FWS – College Work Study
 FSEOG – Federal Supplemental Education Opportunity Grant
 HPEAA – Health Professions Education Assistance Act
 HSM – Health, Science & Mathematics Student Loan Program
 JTPA – Job Training Partnership Act
 NCLTG – North Carolina Legislative Tuition Grants
 NCSIG – North Carolina Student Incentive Grants
 NESLP – Nurse Education Scholarship Loan Program
 NSP – Nurse Scholars Program
 NTA – Nurse Training Act
 SCSF – State Contractual Scholarship Fund
 SOURCE: NCHED A-10

**WAKE TECHNICAL COMMUNITY COLLEGE
NUMBER OF GRADUATES PER YEAR LAST 5 YEARS
CUMULATIVE TOTAL**

YEAR	DEGREE	DIPLOMA	CERTIFICATE	TOTAL
1995-96	525	112	302	939
1996-97	578	121	390	1,089
1997-98	440	80	195	715
1998-99	536	69	322	927
1999-00	561	90	495	1,146

OFFICE OF RESEARCH
MARCH 2001
SOURCE: WAKE TECHNICAL COMMUNITY COLLEGE REGISTRAR

WAKE TECHNICAL COMMUNITY COLLEGE ADULT HIGH SCHOOL GRADUATES LAST 5 YEARS

YEAR	NUMBER GRADUATES
1995-1996	97
1996-1997	64
1997-1998	51
1998-1999	42
1999-2000	66

GED GRADUATES LAST 5 YEARS

YEAR	NUMBER GRADUATES
1995-1996	531
1996-1997	513
1997-1998	646
1998-1999	587
1999-2000	642

OFFICE OF RESEARCH
MARCH 2001
SOURCE: LEIS REPORT

WAKE TECHNICAL COMMUNITY COLLEGE

PASSING RATES FOR LICENSURE EXAMS

1999-2000

CURRICULUM	NUMBER TESTED	PERCENT PASSED
Nursing	45	100%
BLET	55	98%
Dental Assisting	17	94%
Medical Laboratory Technology		
American Society for Clinical Pathology	7	100%
National Certification Agency for Laboratory Personnel	2	100%
Phlebotomy		
American Society for Clinical Pathology	4	100%
National Certification Agency for Phlebotomy	3	100%
Medical Assisting	15	87%
Emergency Medical Technician (EMT)	167	84%
Real Estate		
Sales	42	62%
Broker	3	67%
Radiography	19	100%

OFFICE OF RESEARCH
MARCH 2001
SOURCE: NCCCS Critical Success Factors 2001

GRADUATES BY CURRICULUM

ARTS AND SCIENCES

GRADUATES 1999-2000

A10100 - Associate in Arts Degree (for transfer to university liberal arts programs)	116
A10400 - Associate in Science Degree (for transfer to university science and engineering programs)	21
A10300 - Associate in General Education Degree	7

BUSINESS EDUCATION

Associate in Applied Science Degree:

A25100 - Accounting	23
A25120 - Business Administration	22
A2512C - Business Administration/Human Resources Management	8
A55180 - Criminal Justice Technology	29
A55200 - Culinary Technology	6
A55220 - Early Childhood Associate	13
A25240 - Hotel and Restaurant Management	5
A25360 - Office Systems Technology	10
A2536A - Office Systems Technology/Legal	0
A2536B - Office Systems Technology/Medical	11

Diploma:

D55220A - Early Childhood Associate	3
D25360A - Office Systems Technology	2

Certificate:

C25120A - Business Administration: Sales Development	7
C2512CA - Business Administration: Human Resources Management	5
C55220B - Early Childhood Associate	100
C25360B - Office Systems Technology: Word Processing	4
C25400A - Real Estate	0
C25420 - Real Estate Appraisal	0

ENGINEERING TECHNOLOGY

Associate in Applied Science Degree:

A40100 - Architectural Technology	8
A40120 - Automation/Robotics Technology	1
A40140 - Civil Engineering Technology	3
A40160 - Computer Engineering Technology	19
A40200 - Electronics Engineering Technology	15
A4020A - Electronics Engineering Technology/Instrumentation	0

GRADUATES 1999-2000

A20140 - Environmental Science Technology	8
A40240 - Industrial Engineering Technology	4
A20180 - Industrial Pharmaceutical Technology	8
A40260 - Landscape Architecture Technology	4
A40300 - Manufacturing Engineering Technology	3
A5032A - Manufacturing Technology/Plastics	0
A40320 - Mechanical Engineering Technology	8
A40360 - Scientific Graphics Technology	0
A40380 - Surveying Technology	5
A40400 - Telecommunications and Network Engineering Technology	4

Certificate:

C40100A - Architectural Technology: Architectural CAD	13
C40120A - Automation/Robotics Technology: Industrial Controls	0
C40160B - Computer Engineering Technology: C Language Programming	0
C40160C - Computer Engineering Technology: Personal Computer Specialist	4
C40160A - Computer Engineering Technology: UNIX System Management and Programming	11
C40240A - Industrial Engineering Technology: Industrial Management	1

COMPUTER INFORMATION SYSTEMS

Associate in Applied Science Degree:

A25260 - Information Systems	40
A2526B - Information Systems: Helpdesk and Support Technology	3
A25130 - Computer Programming	12
A25340 - Networking Technology	29

Certificate:

C25260A - Information Systems: Applications	5
C25260F - Information Systems: Database Management	8
C25260C - Information Systems: Desktop Publishing	21
C25260G - Information Systems: Hardware Troubleshooting/Repair	23
C25260D - Information Systems: Networking	34
C25260E - Information Systems: Spreadsheet Management	2
C25260B - Information Systems: Technical Word Processing	2
C25130C - Information Systems/Programming: C++Programming	5
C25130D - Information Systems/Programming: Oracle Programming	7
C25130A - Information Systems/Programming: Internet Programming	2
C25130B - Information Systems/Programming: Visual Basic Programming	21

HEALTHSCIENCES

Associate in Applied Science Degree:

A45340 - Emergency Medical Science	10
A45380 - Human Services Technology	4

GRADUATES 1999-2000

A4538A - Human Services Technology/Developmental Disabilities	1
A4538E - Human Services Technology/Substance Abuse	2
A45420 - Medical Laboratory Technology	7
A45120 - Nursing	45
A45700 - Radiography	17

Diploma:

D45240 - Dental Assisting	19
D45400A - Medical Assisting	14

Certificate:

C45480 - Nursing Assistant	13
C45600 - Phlebotomy	9
C55280 - General Occupational Technology	49

VOCATIONAL TECHNOLOGY

Associate in Applied Science Degree:

A35220 - Electrical/Electronics Technology	6
A50120 - Electronic Servicing Technology	3
A6024B - Heavy Equipment and Transport Technology/Construction Equipment Systems	3
A50240 - Industrial Maintenance Technology	1
A50300 - Machining Technology	4
A5030A - Machining Technology/Tool, Die and Mold Making	0
A50340 - Mechanical Drafting Technology	7

Diploma:

D35100A - Air Conditioning, Heating and Refrigeration Technology	4
D60160A - Automotive Systems Technology	24
D35220A - Electrical/Electronics Technology	1
D50120A - Electronic Servicing Technology	1
D6024BA - Heavy Equipment and Transport Technology/Construction Equipment Systems	4
D50240A - Industrial Maintenance Technology	1
D50300A - Machining Technology	0
D50340A - Mechanical Drafting Technology	0
D35300 - Plumbing	2
D50420A - Welding Technology	3

Certificate:

C35100B - Air Conditioning, Heating and Refrigeration Technology	15
C55120 - Basic Law Enforcement Training	55
C35220C - Electrical/Electronics Technology: Commercial Wiring Methods	7
C35220B - Electrical/Electronics Technology: Residential Wiring Methods	9

GRADUATES 1999-2000

C60224BB - Heavy Equipment and Transport Technology/Construction Equipment Systems: Hydraulics, Engines and Transmissions	5
C6024BC - Heavy Equipment and Transport Technology/Construction Equipment Systems: Fuel Injection, Electrical and Electronics	6
C50300B - Machining Technology	6
C5030A - Machining Technology/Tool, Die and Mold Making: Mold Making	0
C50340B - Mechanical Drafting Technology	5
C35300B - Plumbing: Modern Plumbing, Codes and Blueprint Reading	0
C35300A - Plumbing: Plumbing Applications and Diagrams	0
C50420B - Welding Technology	2

2000 Average Starting Salaries for A.A.S. Degree

Business Education Division	Average Starting	Range	% Return
Accounting	\$ 26,888	\$ 21,000-33,000	54%
Business Administration	27,875	15,000-43,000	52%
Hotel/Restaurant Management	32,000	31,000-33,000	17%
Culinary Technology	19,333	15,000-25,000	43%
Early Childhood Associate	18,800	15,000-23,000	67%
Criminal Justice	31,000	25,000-37,000	48%
Office Systems Technology	23,200	17,000-27,000	70%
Office Systems/Medical	24,000	21,000-27,000	40%
Computer& Information Technology Division			
Information Systems Technology	31,666	25,000-41,000	63%
Computer Programming	41,000	33,000-47,000	58%
Networking Technologies	32,800	19,000-43,000	17%
Engineering Technology Division			
Architectural Technology	25,600	23,000-27,000	91%
Automation/Robotics Technology	34,000	33,000-35,000	100%
Civil Engineering Technology	28,000	27,000-29,000	33%
Computer Engineering Technology	29,600	23,000-35,000	56%
Electronics Engineering Technology	32,000	25,000-39,000	33%
Environmental Science Technology	26,000	25,000-27,000	22%
Surveying Technology	31,250	17,000-47,000	80%
Telecom & Networking Engineering Technology	38,000	37,000-39,000	25%
Industrial Engineering Technology	34,000	33,000-35,000	25%
Industrial Pharmaceutical Technology	27,600	23,000-39,000	60%
Mechanical Engineering Technology	29,000	27,000-31,000	50%
Health Sciences Division			
Medical Laboratory	24,000	21,000-27,000	100%
Nursing	31,455	25,000-39,000	91%
Radiologic Technology	29,385	17,000-37,000	100%
Emergency Medical Science	36,500	25,000-47,000	40%
Vocational Education Division			
Machining Technology	26,000	23,000-29,000	67%
Industrial Maintenance	34,000	33,000-35,000	100%
Heavy Equipment	26,000	25,000-27,000	67%
Electrical/Electronics	27,000	21,000-33,000	33%

Curriculums not represented had 0% return for salary information.

Unrelated and part-time are not calculated in ranges and averages.

Figures taken from 2000 Graduate Placement Survey - check with Placement Office if questions - 662-3376.

2000 Average Starting Salaries for Diploma

Business Education Division	Average Starting	Range	% Return
Early Childhood	\$ 16,000	\$ 15,000-17,000	100%
Health Sciences Division			
Dental Assisting	25,429	19,000-31,000	94%
Medical Assisting	23,333	19,000-29,000	79%
Vocational Education Division			
Automotive Systems Technology	27,333	19,000-41,000	21%
Welding	24,000	23,000-25,000	33%
Plumbing	30,000	29,000-31,000	100%

Curriculums not represented had 0% return for salary information.

Unrelated and part-time are not calculated in ranges and averages.

Figures taken from 2000 Graduate Placement Survey - check with Placement Office if questions - 662-3376.

PERCENT OF 1997-98 COLLEGE TRANSFER STUDENTS WITH A
GPA OF > = 2.0 AFTER TWO SEMESTERS AT A UNC INSTITUTION

COLLEGE	TOTAL FTE	24 OR MORE SEMESTER HOURS		ASSOCIATE DEGREE RECIPIENT		TOTAL	
		NUMBER	PERCENT >=2.0	NUMBER	PERCENT >=2.0	NUMBER	PERCENT >=2.0
Alamance CC	2,697	**	**	134	74	134	74
Asheville-Buncombe TCC	4,180	61	84	31	77	92	82
Beaufort County CC	1,675	19	84	**	**	26	77
Bladen CC	983	**	**	**	**	**	**
Blue Ridge CC	1,911	21	91	**	**	27	89
Brunswick CC	1,110	**	**	13	62	14	62
Caldwell CC & TI	2,916	73	80	30	93	103	84
Cape Fear CC	4,796	148	78	77	75	225	77
Carteret CC	1,452	**	**	**	**	**	**
Catawba Valley CC	3,265	39	74	**	**	47	63
Central Carolina CC	4,302	33	85	17	71	50	80
Central Piedmont CC	10,731	104	81	51	78	155	80
Cleveland CC	1,983	22	64	16	63	38	63
Coastal Carolina CC	4,041	94	81	70	89	164	84
College of The Albemarle	1,960	53	83	30	93	83	87
Craven CC	2,104	52	71	41	73	93	72
Davidson County CC	2,450	**	**	34	82	34	82
Durham TCC	3,682	88	76	20	80	108	77
Edgecombe CC	1,800	**	**	12	75	19	58
Fayetteville TCC	8,722	64	89	37	89	101	89
Forsyth TCC	5,144	48	71	26	77	74	73
Gaston College	3,522	81	59	43	61	124	60
Guilford TCC	6,771	99	72	36	86	135	76
Halifax CC	1,663	10	50	10	70	20	60
Haywood CC	1,564	15	73	16	75	31	74
Isothermal CC	2,049	18	72	17	71	35	71
James Sprunt CC	1,157	15	60	12	58	27	59
Johnston CC	2,943	40	78	11	27	51	67
Lenoir CC	2,472	54	78	20	75	74	77
Martin CC	1,000	**	**	**	**	12	53
Mayland CC	1,035	10	80	**	**	14	79
McDowell TCC	1,142	16	69	11	82	27	74
Mitchell CC	1,699	19	90	20	80	39	85
Montgomery CC	657	**	**	**	**	**	**
Nash CC	1,880	23	78	**	**	32	78
Pamlico CC	431	**	**	**	**	**	**
Piedmont CC	1,680	**	**	**	**	11	64
Pitt CC	4,281	103	78	20	85	123	79
Randolph CC	2,060	28	89	**	**	29	89
Richmond CC	1,844	**	**	**	**	12	58
Roanoke-Chowan CC	886	**	**	**	**	**	**
Robeson CC	2,611	11	82	**	**	18	83
Rockingham CC	1,915	55	80	30	67	85	75
Rowan-Cabarrus CC	3,851	20	70	15	60	35	66
Sampson CC	1,539	**	**	**	**	10	63
Sandhills CC	3,342	104	67	47	72	151	69
South Piedmont CC	1,502	**	**			**	**
Southeastern CC	2,319	32	88	22	96	54	91
Southwestern CC	1,945	18	67	**	**	27	74
Stanly CC	1,474	11	64	**	**	12	64
Surry CC*	2,876	96	70	62	87	158	77
Tri-County CC	1,054	**	**	12	75	20	75
Vance-Granville CC	3,464	28	71	19	74	47	72
Wake TCC	8,292	103	79	55	89	158	82
Wayne CC	3,095	45	64	17	88	62	71
Western Piedmont CC	2,396	50	66	36	83	86	73
Wilkes CC	2,345	17	88	32	78	49	82
Wilson TCC	1,740	10	70	**	**	11	70
System Totals	158,399	2,105	75	1,287	78	3,392	76

*Includes data collected from private colleges and universities.

**Number too small to report without violating students' privacy.

CONTINUING EDUCATION

WAKE TECHNICAL COMMUNITY COLLEGE

FULL-TIME EQUIVALENCY (FTE) DEFINITIONS

CURRICULUM FTE: Includes College Transfer, General Education, Technical, and Vocational Education.

EXTENSION FTE: Includes Academic, Adult High School, Avocational, Occupational, Practical Skills, ABE, Compensatory Education, Learning Lab (ILC), New and Expanding Industry, Human Resource Development, and Self-Supporting.

BASIC SKILLS (LITERACY) FTE - Includes Adult High School, ABE, and Compensatory Education

HUMAN RESOURCES DEVELOPMENT FTE - Includes Human Resources

SMALL BUSINESS CENTER FTE - Includes New and Expanding Industry, and Self-Supporting.

REGULAR BUDGET EXTENSION - Includes Adult High School, Occupational, Adult Basic Education, and Compensatory Education.

NON-REGULAR BUDGET EXTENSION - Includes Learning Laboratory, New and Expanding Industry, Human Resource Development, And Self-Supporting.

COMMUNITY SERVICE - Includes Academic, Avocational, Practical Skills, and Cultural and Civic Activities.

OCCUPATIONAL - Includes Occupational only. Occupational Extension Programs consist of single courses, complete in themselves, designed for the specific purposes of training an individual for employment, upgrading skills of persons presently employed, and retraining others for new employment in occupational fields.

SELF-SUPPORTING - Includes courses which the College may provide at the request of the community but for which the College receives no budgetary credit. The cost of such activities are borne exclusively by the participants or some contracting agency.

SPECIAL NOTE: Wake Tech and the North Carolina Community College System changed from the Quarter System to the Semester System beginning with Fall Semester 1997. The Summer of 1997 was a period of transition. Therefore, enrollment and FTE numbers for the Summer of 1997 were diminished.

When comparing annual enrollment and FTE figures for the Quarter System with the Semester System, you must remember to average the Quarter System numbers and sum the Semester System numbers.

Main Campus = 401 South Campus

AEC = Adult Education Center (News & Observer)

HSC = Health Sciences Campus

SPDC = State Personnel Development Center

Office of Research: January 1999 (CONED.FTE)

ADULT BASIC SKILLS PROGRAM ENROLLMENTS BY TYPE 1999-2000

INSTITUTION	TOTAL FTE	1990 TARGET POP.	LEIS UNDUPLICATED HEADCOUNT						TOTAL	% OF POP. SERVED
			ABE	AHS	CED	ESL	GED	HSG		
Alamance CC	2,697	25,269	491	361	170	905	872	202	3,001	11.88%
Asheville-Buncombe TCC	4,180	38,873	1,762	34	206	844	698	102	3,646	9.38%
Beaufort County CC	1,675	14,670	564	*	79	344	255	0	1,242	8.47%
Bladen CC	983	8,654	394	41	32	200	111	0	778	8.99%
Blue Ridge CC	1,911	18,350	561	169	120	318	546	1	1,715	9.35%
Brunswick CC	1,110	11,582	184	89	120	44	248	0	685	5.91%
Caldwell CC & TI	2,916	28,772	1,268	212	110	546	621	3	2,760	9.59%
Cape Fear CC	4,796	26,376	663	484	89	739	366	0	2,341	8.88%
Carteret CC	1,452	9,618	235	193	97	72	272	17	886	9.21%
Catawba Valley CC	3,265	37,155	1,353	*	126	1,634	581	87	3,781	10.18%
Central Carolina CC	4,302	33,532	886	641	197	1,726	1,142	0	4,592	13.69%
Central Piedmont CC	10,731	69,835	3,063	1,525	341	4,270	1,644	1	10,844	15.53%
Cleveland CC	1,983	22,089	621	256	71	45	55	0	1,048	4.74%
Coastal Carolina CC	4,041	15,045	2,358	336	39	246	887	1,744	5,610	37.29%
College of the Albemarle	1,960	23,648	1,099	359	43	155	629	107	2,392	10.12%
Craven CC	2,104	13,372	401	218	68	244	409	34	1,374	10.28%
Davidson County CC	2,450	39,621	1,569	417	91	592	342	207	3,218	8.12%
Durham TCC	3,682	37,648	1,027	384	153	2,746	390	1	4,701	12.49%
Edgecombe CC	1,800	16,212	571	230	59	78	1,156	23	2,117	13.06%
Fayetteville TCC	8,722	34,431	2,672	345	251	901	405	657	5,231	15.19%
Forsyth TCC	5,144	53,218	2,315	490	233	2,159	713	65	5,975	11.23%
Gaston College	3,522	63,143	2,126	389	49	312	700	28	3,604	5.71%
Guilford TCC	6,771	60,326	2,452	701	236	3,107	912	112	7,520	12.47%
Halifax CC	1,663	23,882	1,014	*	43	50	192	0	1,299	5.44%
Haywood CC	1,564	11,463	504	*	65	149	268	130	1,116	9.74%
Isothermal CC	2,049	20,498	877	418	113	277	337	41	2,063	10.06%
James Sprunt CC	1,157	12,239	475	34	67	193	135	2	906	7.40%
Johnston CC	2,943	20,801	468	542	82	405	301	0	1,798	8.64%
Lenoir CC	2,472	22,346	1,438	154	103	189	564	62	2,510	11.23%
Martin CC	1,000	12,346	899	97	81	105	91	0	1,273	10.31%
Mayland CC	1,035	13,255	651	*	74	128	235	0	1,088	8.21%
McDowell TCC	1,142	10,818	312	*	119	258	239	510	1,438	13.29%
Mitchell CC	1,699	23,014	1,071	*	61	649	354	170	2,305	10.02%
Montgomery CC	657	7,445	281	9	20	188	74	3	575	7.72%
Nash CC	1,880	19,155	1,246	143	45	130	222	56	1,842	9.62%
Pamlico CC	431	2,861	198	*	44	61	112	2	417	14.58%
Piedmont CC	1,680	15,027	1,346	*	77	32	162	342	1,959	13.04%
Pitt CC	4,281	19,804	1,086	77	115	246	883	213	2,620	13.23%
Randolph CC	2,060	29,749	894	173	113	572	93	65	1,910	6.42%
Richmond CC	1,844	21,587	2,277	147	51	158	430	214	3,277	15.18%
Roanoke-Chowan CC	886	12,873	626	*	35	28	37	3	729	5.66%
Robeson CC	2,611	29,797	1,619	402	144	225	214	0	2,604	8.74%
Rockingham CC	1,915	25,574	1,113	*	53	295	354	322	2,137	8.36%
Rowan Cabarrus CC	3,851	50,922	956	163	81	1,110	415	19	2,744	5.39%
Sampson CC	1,539	12,725	667	*	131	253	56	1	1,108	8.71%
Sandhills CC	3,342	18,119	1,238	51	98	313	600	33	2,333	12.88%
South Piedmont CC	1,502	15,732	1,150	218	53	400	292	21	2,134	13.56%
Southeastern CC	2,319	13,992	951	197	67	72	371	159	1,817	12.99%
Southwestern CC	1,945	15,080	1,220	32	43	65	99	29	1,488	9.87%
Stanly CC	1,474	23,135	524	282	49	124	164	28	1,171	5.06%
Surry CC	2,876	28,521	789	*	130	527	521	18	1,985	6.96%
Tri-County CC	1,054	10,165	343	*	74	28	106	2	553	5.44%
Vance-Granville CC	3,464	35,236	1,490	358	98	344	1,050	20	3,360	9.54%
Wake TCC	8,292	45,581	1,891	235	336	4,790	1,866	567	9,685	21.25%
Wayne CC	3,095	20,911	1,520	369	74	257	517	0	2,737	13.09%
Western Piedmont CC	2,396	22,709	1,789	251	294	283	727	18	3,362	14.80%
Wilkes CC	2,345	30,935	925	297	145	406	127	140	2,040	6.59%
Wilson TCC	1,740	17,230	929	151	78	313	235	22	1,728	10.03%
System Totals	158,400	1,416,966	63,412	12,674	6,236	35,850	26,397	6,603	151,172	10.67%

PERCENT OF BASIC SKILLS STUDENTS WHO PROGRESS TO ANOTHER LEVEL, 1999-2000

COLLEGE	TOTAL FTE	TOTAL SERVED IN LITERACY	COMPLETED A LEVEL or GOAL	PROGRESSING SAME LEVEL	EXIT NON-COMPLETERS	MOVED TO A HIGHER LEVEL	COMPOSITE PROGRESS PERCENT	COMPOSITE PROGRESS PERCENT (Inmates Transferred-Out Excluded)
Alamance CC	2,697	3,001	53%	29%	6%	12%	94%	94%
Asheville-Buncombe TCC	4,180	3,646	56%	18%	12%	14%	88%	88%
Beaufort County CC	1,675	1,242	39%	31%	24%	7%	76%	76%
Bladen CC	983	778	11%	52%	22%	14%	78%	77%
Blue Ridge CC	1,911	1,715	32%	26%	21%	21%	79%	79%
Brunswick CC	1,110	685	51%	21%	18%	10%	82%	82%
Caldwell CC & TI	2,916	2,760	47%	30%	6%	17%	94%	94%
Cape Fear CC	4,796	2,341	36%	27%	29%	9%	71%	71%
Carteret CC	1,452	886	33%	40%	23%	4%	77%	78%
Catawba Valley CC	3,265	3,781	66%	11%	12%	11%	88%	88%
Central Carolina CC	4,302	4,592	27%	36%	30%	6%	70%	70%
Central Piedmont CC	10,731	10,844	79%	8%	6%	7%	94%	94%
Cleveland CC	1,983	1,048	57%	15%	14%	14%	86%	85%
Coastal Carolina CC	4,041	5,610	63%	6%	12%	19%	88%	88%
College of the Albemarle	1,960	2,392	48%	21%	18%	13%	82%	83%
Craven CC	2,104	1,374	56%	21%	16%	7%	84%	84%
Davidson County CC	2,450	3,218	56%	11%	17%	16%	83%	83%
Durham TCC	3,682	4,701	18%	32%	42%	8%	58%	58%
Edgecombe CC	1,800	2,117	41%	25%	29%	5%	71%	73%
Fayetteville TCC	8,722	5,231	43%	24%	21%	12%	79%	79%
Forsyth TCC	5,144	5,975	61%	11%	17%	11%	83%	83%
Gaston College	3,522	3,604	14%	32%	33%	21%	67%	67%
Guilford TCC	6,771	7,520	33%	19%	37%	11%	63%	63%
Halifax CC	1,663	1,299	42%	30%	4%	24%	96%	96%
Haywood CC	1,564	1,116	61%	11%	11%	17%	89%	90%
Isothermal CC	2,049	2,063	33%	37%	11%	19%	89%	90%
James Sprunt CC	1,157	906	42%	15%	22%	21%	78%	78%
Johnston CC	2,943	1,798	39%	32%	25%	4%	75%	74%
Lenoir CC	2,472	2,510	40%	27%	22%	10%	78%	78%
Martin CC	1,000	1,273	33%	28%	20%	18%	80%	80%
Mayland CC	1,035	1,088	50%	13%	9%	27%	91%	91%
McDowell TCC	1,142	1,438	61%	13%	16%	10%	84%	84%
Mitchell CC	1,699	2,305	32%	32%	24%	12%	76%	76%
Montgomery CC	657	575	7%	48%	41%	5%	59%	59%
Nash CC	1,880	1,842	40%	24%	26%	10%	74%	75%
Pamlico CC	431	417	69%	9%	17%	6%	83%	84%
Piedmont CC	1,680	1,959	76%	5%	5%	14%	95%	95%
Pitt CC	4,281	2,620	22%	41%	29%	7%	71%	71%
Randolph CC	2,060	1,910	43%	22%	26%	9%	74%	74%
Richmond CC	1,844	3,277	55%	18%	15%	12%	85%	84%
Roanoke-Chowan CC	886	729	11%	50%	28%	11%	72%	73%
Robeson CC	2,611	2,604	51%	18%	21%	10%	79%	79%
Rockingham CC	1,915	2,137	41%	21%	21%	17%	79%	79%
Rowan Cabarrus CC	3,851	2,744	27%	34%	28%	11%	72%	72%
Sampson CC	1,539	1,108	25%	19%	29%	27%	71%	72%
Sandhills CC	3,342	2,333	30%	34%	22%	14%	78%	79%
South Piedmont CC	1,502	2,134	20%	29%	21%	29%	79%	80%
Southeastern CC	2,319	1,817	34%	22%	25%	19%	75%	78%
Southwestern CC	1,945	1,488	29%	32%	22%	17%	78%	78%
Stanly CC	1,474	1,171	42%	29%	21%	8%	79%	79%
Surry CC	2,876	1,985	44%	24%	23%	8%	77%	78%
Tri-County CC	1,054	553	62%	6%	7%	25%	93%	93%
Vance-Granville CC	3,464	3,360	30%	29%	25%	16%	75%	76%
Wake TCC	8,292	9,775	23%	32%	34%	11%	66%	67%
Wayne CC	3,095	2,737	65%	5%	10%	20%	90%	90%
Western Piedmont CC	2,396	3,362	47%	19%	18%	16%	82%	82%
Wilkes CC	2,345	2,040	49%	18%	16%	17%	84%	84%
Wilson TCC	1,740	1,728	10%	57%	25%	8%	75%	75%
System Totals	158,400	151,262	43%	23%	21%	13%	79%	79%

WAKE TECHNICAL COMMUNITY COLLEGE

**EXTENSION FTE (INCLUDES BASIC SKILLS, LEARNING LAB,
OCCUPATIONAL EXTENSION, FOCUSED INDUSTRY TRAINING,
HUMAN RESOURCES DEVELOPMENT, NEW & EXPANDING
INDUSTRY, SMALL BUSINESS CENTER, JOB TRAINING
PARTNER, & COMMUNITY SERVICE)**

YEAR	FALL	WINTER	SPRING	SUMMER
1995-1996	1,298	1,761	2,301	1,893
1996-1997	1,278	1,646	2,281	376
1997-1998	844	0	775	594
1998-1999	815	0	870	592
1999-2000	864	0	763.7	608.6

OFFICE OF RESEARCH NOTE: No Winter Term under Semester System. For an explanation of Semester System FTE, see Glossary. To compare with the Quarter System you must add the Fall & Spring Semesters together. Summer 1997 was transitional.

MARCH 2001

SOURCE: WAKE TECHNICAL COMMUNITY COLLEGE REGISTRAR

WAKE TECHNICAL COMMUNITY COLLEGE
BASIC SKILLS FTE (INCLUDES ADULT HIGH SCHOOL, ABE,
COMPENSATORY EDUCATION)
LAST 5 YEARS

YEAR	FALL	WINTER	SPRING	SUMMER
1995-1996	122	719	679	787
1996-1997	227	673	784	132
1997-1998	313	0	261	189
1998-1999	259.7	0	266	199
1999-2000	274	0	282	200

OFFICE OF RESEARCH NOTE: No Winter Term under Semester System. For an explanation of Semester System FTE, see Glossary. To compare with the Quarter System you must add the Fall & Spring Semesters together. Summer 1997 was transitional.

MARCH 2001

SOURCE: WAKE TECHNICAL COMMUNITY COLLEGE REGISTRAR

WAKE TECHNICAL COMMUNITY COLLEGE
SELF-SUPPORTING FTE (INCLUDES: OCCUPATIONAL
EXTENSION RECEIPT, FOCUSED INDUSTRY TRAINING, SMALL
BUSINESS CENTER, JOB TRAINING PARTNERSHIP, HRD,
LEARNING LAB, COMMUNITY SERVICE SELF-SUPPORTING)
LAST 5 YEARS

YEAR	FALL	WINTER	SPRING	SUMMER
1995-1996	53	48	52	29
1996-1997	23	74	90	14
1997-1998	32	0	25	17
1998-1999	34.95	0	109	80
1999-2000	127.0	0	119.9	97.1

NEW AND EXPANDING INDUSTRY FTE
LAST 5 YEARS

1995-1996	169	274	225	185
1996-1997	153	161	117	31
1997-1998	58	0	80	74
1998-1999	64.8	0	100	50
1999-2000	75.7	0	49.5	50.1

OFFICE OF RESEARCH NOTE: No Winter Term under Semester System. For an explanation of Semester System FTE, see Glossary. To compare with the Quarter System you must add the Fall & Spring Semesters together. Summer 1997 was transitional.

MARCH 2001

SOURCE: WAKE TECHNICAL COMMUNITY COLLEGE REGISTRAR

WAKE TECHNICAL COMMUNITY COLLEGE

CONTINUING EDUCATION SERVICES

CORRECTIONS EDUCATION

	<u>1997</u>	<u>1998</u>	<u>1999</u>	<u>2000</u>
Classes	175	276	329	346
Students	2,505	3,209	4,086	3,942

EVENING DIVISION (Non-Credit)

	<u>1997</u>	<u>1998</u>	<u>1999</u>	<u>2000</u>
FTE	481	504	620.39	437.15
Students	15,080	15,241	18,931	14,683

FIRE SERVICES TRAINING

	<u>1997</u>	<u>1998</u>	<u>1999</u>	<u>2000</u>
Classes	429	448	475	504
Students	6,051	6,563	7,412	7,296

LAW ENFORCEMENT TRAINING

	<u>1997</u>	<u>1998</u>	<u>1999</u>	<u>2000</u>
Classes	92	198	339	340
Students	1,377	4,322	5,109	4,579

WORKPLACE BASIC SKILLS (ABE/GED, WORKPLACE SPECIFIC, AND ESL)

	<u>1996-97</u>	<u>1997-98</u>	<u>1998-99</u>	<u>2000</u>
Sites	17	13	28	18
Employers	14	11	23	16
Students	237	260	760	477

SOURCE: WAKE TECHNICAL COMMUNITY COLLEGE REGISTRAR
WAKE TECHNICAL COMMUNITY COLLEGE CONTINUING EDUCATION

EMPLOYEES

WAKE TECHNICAL COMMUNITY COLLEGE
FULL-TIME EMPLOYEES STATISTIC USING EEOC CLASSIFICATION
DATA EFFECTIVE OCTOBER 28, 2000

FULL-TIME ANNUAL	MALES	%	FEMALES	%	TOTAL
EXECUTIVE/MANAGERIAL	12	70.6	5	29.4	17
INSTRUCTIONAL/FACULTY	111	43.0	147	57.0	258
PROFESSIONAL (NON-FACULTY)	44	42.3	60	57.7	104
SECRETARIAL/CLERICAL	1	1.0	91	98.9	92
TECHNICAL/PARPROFESSIONAL	3	21.4	11	78.6	14
SKILLED CRAFTS	5	100	0	0	5
SERVICE/MAINTENANCE	9	75.0	3	25.0	12
TOTAL	185	36.7	317	63.3	502

OFFICE OF RESEARCH
MARCH 2001
SOURCE: WAKE TECHNICAL COMMUNITY COLLEGE ADMINISTRATIVE SERVICES

WAKE TECHNICAL COMMUNITY COLLEGE
PART-TIME EMPLOYEES USING EEOC CLASSIFICATION BY SEX
DATA EFFECTIVE OCTOBER 28, 2000

EEOC CLASSIFICATION	MALES	FEMALES	TOTAL
EXECUTIVE/MANAGERIAL	1	0	1
INSTRUCTIONAL/FACULTY	375	380	755
PROFESSIONAL (NON-FACULTY)	3	12	15
SECRETARIAL/CLERICAL	4	24	28
TECHNICAL/PROFESSIONAL	16	37	53
SKILLED CRAFTS	0	0	0
SERVICE/MAINTENANCE	4	0	4
TOTAL	403	453	856

OFFICE OF RESEARCH
MARCH 2001
SOURCE: WAKE TECHNICAL COMMUNITY COLLEGE ADMINISTRATIVE SERVICES

FACILITIES

WAKE TECHNICAL COMMUNITY COLLEGE PERMANENT FACILITIES

ACADEMIC YEAR	GROSS SQUARE FEET	LEASED
1988	357,100	
1989	354,080	
1990	349,700	
1991	404,110	
1992	404,110	
1993	404,110	22,260
1994	404,110	22,260
1995	404,110	22,260
1996	404,110	22,260
1997	509,779	22,260
1998	509,779	22,260
1999	509,779	22,260

SOURCE: FACILITIES INVENTORY AND UTILIZATION STUDY, STATE OF NORTH CAROLINA, THE UNIVERSITY OF NORTH CAROLINA, THE UNIVERSITY OF NORTH CAROLINA COMMISSION ON HIGHER EDUCATION FACILITIES CHAPEL HILL, NORTH CAROLINA, APRIL 1999.

Facilities Inventory and Utilization Study 1999

The primary purpose of this research document is to provide higher education administrators with a detailed statistical profile of the facilities of their own campuses and of other colleges and universities in North Carolina (Facilities Inventory and Utilization Study, 1999).

Capacity/Enrollment Ratio

The capacity/enrollment ratio, often referred to as the C/E ratio, is the amount of instructional and library space on campus divided by the total fall term student clock hours of that institution. In analyzing and comparing the capacity/enrollment ratios, it should be kept in mind that a relatively low ratio generally indicates a high level of space utilization.

Capacity/Enrollment Ratio Table 1 (pages 14-15)

	1999	1998	1997	1996	1995
Wake Tech CC	2.28*	2.79	2.76	2.78	2.78
Central Piedmont CC	3.80	3.29	2.64	2.79	2.47
Fayetteville CC	3.14	3.04	2.66	2.87	2.62
Guilford CC	4.40	4.75	4.60	3.74	3.57
System Average	3.97	4.06	3.64	3.62	3.55

* Lowest figure among the 58 NC Community Colleges in 1999

Square Feet of Academic Facilities Per FTE Student

The ratio of an institution's square footage of academic facilities to its full-time equivalent enrollment represents an important index of the instructional utilization of campus facilities. In this table, the FTE enrollments which are reported for the institutions of the Community College System include only credit enrollment generated in all inventoried space (on-campus only = Main Campus, Adult Education Center, and the Health Education Campus)

Square Feet of Academic Facilities Per FTE Student Table 2 (pages 22-23)

	1999	1998	1997	1996	1995
Wake Tech CC	58	59	66	63	61
Central Piedmont CC	102	89	81	69	60
Fayetteville CC	85	85	83	68	69
Guilford CC	103	103	104	93	83
System Average	97	98	99	87	84

* Pitt CC had the lowest figure for 1999 = 54; Wake Tech CC was second lowest

Average Weekly Room Hours of Instruction in Classroom

Is the average number of hours that an institution's classrooms are used for instructional purposes each week.

For the purpose of this study, a classroom is defined as a room used to conduct classes that do not require special-purpose equipment for student use.

Daytime utilization is based on all classes with beginning times between and including 5:00 a.m. and 4:59 p.m.; nighttime utilization is based on all other classes. The "All Hours" section in Table 3 indicates the sum of the daytime and nighttime figures for the last five years.

Average Weekly Room Hours of Instruction in Classrooms Table 3 (pages 28-29)

	Daytime Hours	Nighttime Hours	1999	1998	1997	1996	1995
			All Hours				
Wake Tech CC	25.2	4.8	30.0	27.0	24.4	26.0	25.7
Central Piedmont CC	15.5	5.4	20.9	22.8	22.2	26.5	28.0
Fayetteville CC	17.5	5.7	23.2	23.4	24.9	30.1	26.8
Guilford CC	12.9	4.7	17.6	16.2	14.9	15.5	22.5
System Average	15.1	5.5	20.6	20.0	20.2	22.6	23.3

* Pitt CC had the highest figure for 1999: 34.2 (All Hours)

Nash CC had the second highest figure for 1999: 30.5

Wake Tech CC had the third highest figure for 1999

Average Weekly Room Hours of Instruction in Class Laboratories

Is the average number of hours that an institution's class laboratories are used for instructional purposes each week.

For purposes of this study, a class laboratory is defined as a room used primarily for regularly scheduled classes that require special-purpose equipment for student participation, experimentation, observation or practice in a field of study.

Daytime utilization is based on all classes with beginning times between and including 5:00 a.m. and 4:59 p.m.; nighttime utilization is based on all other classes. The "All Hours" section in Table 4 indicates the sum of the daytime and nighttime figures for the last five years.

Average Weekly Room Hours of Instruction in Class Laboratories Table 4
(pages 34-35)

	Daytime Hours	Nighttime Hours	1999	1998	1997	1996	1995
			All Hours				
Wake Tech CC	20.6	6.7	27.3	28.8	26.3	28.6	27.3
Central Piedmont CC	13.2	4.8	18.0	20.1	19.4	26.0	26.0
Fayetteville CC	13.7	4.0	17.7	17.6	20.2	17.5	17.1
Guilford CC	11.0	3.7	14.7	13.1	13.2	13.9	14.7
System Average	13.0	4.8	17.8	17.6	17.9	19.0	18.7

* Surry CC had the highest figure for 1999: 28.0

Wake Tech CC had the second highest figure for 1999: 27.3

Average Weekly Use of Student Stations in Classrooms

The average number of hours each week that each classroom student station (seat) is used.

Average Weekly Use of Student Stations in Classrooms Table 5 (pages 40-41)

	Daytime Hours	Nighttime Hours	1999	1998	1997	1996	1995
			All Hours				
Wake Tech CC	16.0	2.8	18.8	17.1	15.1	15.2	15.2
Central Piedmont CC	7.8	2.7	10.5	12.2	12.2	14.6	14.8
Fayetteville CC	10.0	2.4	12.4	12.3	12.2	15.5	14.3
Guilford CC	8.9	2.7	11.6	10.5	10.0	9.5	12.6
System Average	8.8	2.7	11.5	11.2	11.2	12.6	20.6

* Pitt CC had the highest figure for 1999: 20.6

Wake Tech CC had the second highest figure for 1999: 18.8

Average Weekly Use of Student Stations in Class Laboratories

The average number of hours each week that each class lab student station is used.

Average Weekly Use of Student Stations in Class Laboratories Table 6 (pages 46-47)

	Daytime Hours	Nighttime Hours	1999	1998	1997	1996	1995
			All Hours				
Wake Tech CC	15.8	5.7	21.5*	23.3	19.7	20.7	19.6
Central Piedmont CC	6.5	2.8	9.3	11.2	10.5	13.8	13.1
Fayetteville CC	7.8	1.9	9.7	9.8	10.6	10.6	10.9
Guilford CC	7.7	2.4	10.1	9.3	9.9	9.7	10.1
System Average	8.0	2.6	10.6	10.7	10.6	11.5	11.2

* Wake Tech CC had the highest figure for 1999: 21.5

Percent Student Station Utilization Classrooms and Class Laboratories

Percent student station utilization indicates the average percentage of student stations (seats) that are occupied when classrooms or class laboratories are in use.

Percent Student Station Utilization Classrooms and Class Laboratories Table 7 (pages 52-53)

Classrooms

CLASSROOMS	1999	1998	1997	1996	1995
Wake Tech CC	64.2	64.2	61.8	59.4	59.2
Central Piedmont CC	48.1	52.9	53.4	53.6	50.7
Fayetteville CC	49.9	50.2	47.3	49.7	50.1
Guilford CC	62.6	61.6	64.8	58.1	54.5
System Average	53.1	53.0	52.6	52.8	53.5

* Cape Fear CC had the highest classroom figure for 1999: 66.2

* Wake Tech CC had the second highest classroom figure

Class Laboratories

LABORATORIES	1999	1998	1997	1996	1995
Wake Tech CC	72.2	75.6	71.3	67.8	67.0
Central Piedmont CC	49.7	48.1	45.2	44.7	41.5
Fayetteville CC	53.4	54.2	52.3	57.0	60.4
Guilford CC	61.7	65.0	67.2	63.4	59.3
System Average	54.8	55.8	54.5	55.8	54.9

* Wake Tech CC had the highest figure for Class Laboratories for 1999: 72.2

Enrollments

This table for 1995-1998 lists only fall on-campus (inventoried space) credit enrollment. Noncredit enrollments are not included. Instruction which took place in facilities not on a community college's facilities inventory was not considered in determining the FTE enrollment listed. For 1999, the fall on-campus credit FTE is provided, but as a means of comparison, the total fall credit FTE (representing both on-campus and off-campus credit instruction) is listed for all colleges.

FTE Enrollments Table 12 (pages 74-75)

	1999	1998	1997	1996	1995
Wake Tech CC	5,338 (7,788)	5,022	4,452	4,250	4,330
Central Piedmont CC	6,426 (10,666)	6,966	6,810	7,943	8,620
Fayetteville CC	4,832 (8,088)	4,514	4,296	4,997	4,861
Guilford CC	5,160 (6,566)	4,994	4,670	5,076	4,957

* Figures in parentheses represent total FTE enrollments (both on and off campus).

COMPARISONS

Table 1
Student Enrollment by College Annual 1999-2000
North Carolina Community College System
(Unduplicated Headcount)*

Colleges	Curriculum Programs					Extension Programs												Unduplicated Total
	Asso- ciate	Dip- loma	Certi- ficate	Trans- ition	Curr. Sub- total	Basic Skills	OCC RB	Learn Lab	OCC SS	FIT	HRD	NIT EIT	SBC	JT PA	Comm Svc.	NON OCC SS	Exten. Sub total	
Alamance CC	2,929	358	480	1,215	4,753	3,049	4,598	0	666	104	59	155	0	0	280	1,153	9,639	14,035
Asheville-Buncombe TCC	3,265	393	276	3,224	6,915	3,681	9,020	0	1,068	46	914	592	0	0	2,050	3,323	19,485	25,511
Beaufort County CC	1,286	185	43	500	1,986	1,251	2,609	0	387	6	137	153	296	0	186	721	5,437	7,157
Bladen CC	486	217	42	800	1,491	922	1,473	50	0	20	276	15	160	0	102	793	3,419	4,673
Blue Ridge CC	1,422	268	198	737	2,558	1,718	4,897	41	1,182	122	260	340	272	0	500	3,400	11,647	13,802
Brunswick CC	842	177	82	197	1,275	690	2,565	0	351	25	203	77	175	0	286	1,618	5,684	6,809
Caldwell CC & TI	2,132	786	364	1,201	4,345	2,777	4,657	10	0	92	1,497	76	1,143	0	164	1,167	10,277	13,927
Cape Fear CC	5,354	391	443	1,410	7,423	2,413	6,263	841	551	117	823	0	361	0	784	5,167	16,093	22,108
Carteret CC	1,107	152	145	950	2,278	889	2,711	0	109	0	82	5	656	0	197	144	4,567	6,602
Catawba Valley CC	3,154	223	372	1,724	5,362	3,850	4,410	0	1,890	195	152	556	415	0	777	2,848	14,336	19,071
Central Carolina CC	2,674	382	1,181	1,070	5,201	4,569	5,312	0	238	163	387	906	0	0	869	636	12,391	17,122
Central Piedmont CC	12,142	622	269	10,424	23,071	11,651	10,785	0	12,550	185	536	2,419	0	0	0	2,664	38,547	59,292
Cleveland CC	1,599	431	164	1,417	3,538	1,048	2,298	0	255	75	128	152	324	0	505	407	4,919	8,100
Coastal Carolina CC	4,309	348	415	851	5,738	5,864	10,528	237	3,067	97	531	208	711	0	632	3,372	22,355	26,551
College of The Albemarle	1,930	222	198	887	3,194	2,416	3,254	0	98	0	342	62	367	0	0	377	6,686	9,444
Craven CC	2,711	189	128	821	3,766	1,368	4,133	71	629	16	132	56	370	0	121	679	7,173	10,591
Davidson County CC	1,772	188	209	1,256	3,332	2,372	4,549	0	998	98	939	215	350	0	19	392	9,288	11,826
Durham TCC	3,740	216	196	3,797	7,641	3,941	6,589	0	36	25	173	311	0	0	91	383	11,386	18,438
Edgecombe CC	1,703	197	5	777	2,639	2,002	2,393	0	0	0	218	825	274	0	77	66	5,382	7,771
Fayetteville TCC	9,769	797	317	2,477	13,031	5,257	14,481	0	5,214	71	994	52	344	0	2,668	397	27,824	39,279
Forsyth TCC	4,863	741	250	2,589	8,154	5,851	9,590	0	3,453	309	312	44	819	0	691	2,159	21,859	29,127
Gaston College	3,905	368	388	1,312	5,858	3,527	4,262	0	4,379	92	281	494	398	0	1,124	196	13,758	18,972
Guilford TCC	7,385	204	94	1,963	9,588	5,730	9,517	0	2,044	282	1,471	578	822	0	1,292	8,121	27,646	36,164
Halifax CC	1,385	138	335	354	2,166	1,317	3,143	9	315	305	35	87	666	0	401	94	5,856	7,722
Haywood CC	1,126	122	215	827	2,242	1,129	2,196	438	39	60	1,133	197	326	0	59	868	5,959	7,559
Isothermal CC	1,476	370	264	827	2,878	2,210	1,418	0	0	44	210	75	305	0	0	3,210	6,909	9,430
James Sprunt CC	730	303	168	477	1,623	913	1,559	229	18	43	140	12	482	0	230	1,307	4,670	5,942
Johnston CC	2,068	299	1,241	861	4,415	1,834	4,667	1,260	683	102	130	65	838	0	285	719	9,972	13,091
Lenoir CC	1,841	128	169	973	3,033	2,582	4,336	0	0	55	371	305	1,059	0	336	1,846	10,225	12,882
Martin CC	650	103	2	285	1,021	1,209	1,838	0	78	9	226	0	275	0	386	37	3,830	4,628

* Unduplicated headcounts are reported in each cell. Rows and columns will not add up.

Table 1
Student Enrollment by College Annual 1999-2000
North Carolina Community College System
(Unduplicated Headcount)*

Colleges	Curriculum Programs					Extension Programs													Unduplicated Total
	Asso- ciate	Dip- loma	Certi- ficate	Trans- ition	Curr. Sub- total	Basic Skills	OCC RB	Learn Lab	OCC SS	FIT	HRD	NIT EIT	SBC	JT PA	Comm Svc.	OCC SS	NON Sub total	Exten. total	
Mayland CC	587	140	401	352	1,445	1,094	2,270	0	156	51	336	282	178	0	161	381	4,512	5,678	
McDowell TCC	851	264	122	414	1,596	1,355	2,896	0	98	253	857	44	102	0	178	602	5,898	7,169	
Mitchell CC	1,536	362	61	565	2,440	2,318	3,337	0	595	30	283	106	270	0	141	553	7,033	9,124	
Montgomery CC	614	101	101	263	1,023	582	1,331	1	294	45	202	67	284	0	53	100	2,738	3,621	
Nash CC	1,886	85	315	806	3,059	1,873	4,391	101	93	39	353	453	472	0	307	223	8,004	10,709	
Pamlico CC	228	9	191	39	465	417	788	9	0	3	91	0	125	0	109	55	1,457	1,810	
Piedmont CC	975	235	548	726	2,448	1,979	1,787	0	604	71	479	222	286	0	200	0	5,237	7,328	
Pitt CC	4,731	295	283	2,208	7,292	2,635	3,508	0	2,317	112	267	508	231	0	316	272	9,565	16,288	
Randolph CC	1,636	249	202	567	2,581	1,955	4,238	0	504	369	252	100	463	0	197	1,159	8,564	10,793	
Richmond CC	1,440	77	87	257	1,835	3,286	2,389	0	122	90	929	274	390	0	170	9	6,202	7,828	
Roanoke-Chowan CC	827	227	49	249	1,306	731	926	0	6	123	22	0	348	0	412	23	2,462	3,669	
Robeson CC	1,585	130	369	402	2,444	2,626	4,811	0	1,029	267	192	186	333	0	296	272	9,365	11,473	
Rockingham CC	1,472	238	393	692	2,690	2,156	3,700	0	788	98	300	12	803	0	401	1,708	9,186	11,354	
Rowan-Cabarrus CC	3,325	345	845	1,742	6,094	2,941	6,567	0	551	321	601	3,539	472	0	425	59	14,504	19,840	
Sampson CC	1,060	125	228	527	1,877	1,181	2,211	0	153	0	1,079	17	624	0	326	1,003	5,647	7,127	
Sandhills CC	2,855	155	150	830	3,922	2,358	5,496	0	1,024	67	133	204	1,921	0	37	1,188	11,330	14,757	
South Piedmont CC	1,160	433	267	738	2,508	2,149	2,780	56	282	222	383	226	224	0	108	173	6,121	8,122	
Southeastern CC	1,710	285	368	685	2,939	1,837	2,627	0	63	19	550	43	671	0	1,152	30	6,154	8,422	
Southwestern CC	1,547	24	94	762	2,379	1,502	3,479	0	1,663	16	1,023	22	303	0	70	637	7,918	9,944	
Stanly CC	1,095	76	228	623	1,937	1,200	3,083	0	94	79	95	57	348	0	204	0	4,881	6,427	
Surry CC	2,524	508	235	1,059	4,130	2,007	5,118	0	103	1,031	435	0	598	0	629	246	9,337	12,744	
Tri-County CC	1,110	151	89	371	1,679	561	1,630	0	479	0	349	72	236	0	532	165	3,553	4,862	
Vance-Granville CC	2,310	561	77	1,560	4,434	3,371	6,148	0	83	1,480	333	597	267	0	397	362	12,276	16,100	
Wake TCC	8,680	414	1,617	3,067	13,343	9,925	15,905	2,545	2,473	96	518	1,186	783	0	4,372	268	35,808	46,135	
Wayne CC	2,995	286	91	897	4,177	2,747	4,762	512	111	65	253	155	565	0	712	508	9,823	13,400	
Western Piedmont CC	1,964	154	246	956	3,247	3,422	4,824	200	1,885	146	726	149	359	0	372	1,561	11,596	14,243	
Wilkes CC	1,738	214	188	701	2,756	2,068	5,157	0	633	567	336	303	199	0	296	424	9,097	11,316	
Wilson TCC	1,364	192	196	704	2,364	1,739	4,934	0	470	250	442	189	530	0	941	96	8,910	10,915	
Total 01 1999-2000	141,826	15,749	16,609	68,233	233,514	147,259	241,700	6,600	56,399	8,653	24,814	18,004	24,422	0	28,535	60,121	564,455	757,745	
Total 01 1998-1999	134,456	16,932	15,927	68,671	227,113	140,540	262,516	7,335	50,031	10,659	23,498	19,095	21,577	0	41,505	50,549	573,715	759,936	
Total 01 1997-1998	124,288	15,377	13,026	61,178	211,440	130,723	244,761	8,369	46,109	7,167	19,889	18,394	20,989	0	36,910	49,889	536,462	710,681	

* Unduplicated headcounts are reported in each cell. Rows and columns will not add up.

TABLE 26
ANNUALIZED AVERAGE ANNUAL
FULL-TIME EQUIVALENT (FTE)

1999-00

CURRICULUM PROGRAMS						EXTENSION PROGRAMS														
COLLEGES	ASSO- CIATE	CERTIFI- CATE	DIPLOMA	TRANSI- TIONAL	SUB TOTAL	BASIC SKILLS	OCC RB	SUB TOTAL	LEARN LAB	OCC SS	FIT	HRD	NIT/EIT	SBC	JTPA	COMM SVC	NON OCC SS	TOTAL		
	DEGREE																			
ALAMANCE CC	1,541	110	207	247	2,104	213	192	405		89	2	8	13			36	39	2,697		
ASHEVILLE-BUNCOMBE TCC	1,992	127	239	798	3,155	306	507	813		37	2	44	13			70	45	4,180		
BEAUFORT COUNTY CC	844	42	165	97	1,149	240	202	442		4		16	2	2		30	31	1,675		
BLADEN CC	288	23	166	323	800	46	105	151			2	11		1		10	8	983		
BLUE RIDGE CC	795	106	157	170	1,229	161	384	545	1	6	2	16	43	1		28	41	1,911		
BRUNSWICK CC	469	53	139	37	698	184	155	338		4	2	13	9	1		20	24	1,110		
CALDWELL CC & TI	1,417	251	418	250	2,336	198	290	489		1	2	40		7		16	26	2,916		
CAPE FEAR CC	3,193	256	261	227	3,937	258	463	721	10	9	6	24		1		38	50	4,796		
CARTERET CC	657	82	116	300	1,155	141	128	269				5		5		15	3	1,452		
CATAMBA VALLEY CC	1,818	171	133	317	2,439	162	280	442		28	14	28	211	3		34	66	3,265		
CENTRAL CAROLINA CC	1,714	536	345	308	2,903	743	383	1,125		18	3	18	175			44	15	4,302		
CENTRAL PIEDMONT CC	5,590	64	261	2,142	8,057	775	952	1,726		322	6	49	500	2		68		10,731		
CLEVELAND CC	843	68	311	344	1,566	135	151	286		3	3	9	61	2		50	3	1,983		
COASTAL CAROLINA CC	2,128	156	288	134	2,706	258	957	1,215	1	23	2	27	7	7		34	19	4,041		
COLLEGE OF ALBEMARLE	1,107	76	148	181	1,512	255	139	394		2		38		1			13	1,960		
CRAVEN CC	1,299	76	146	144	1,665	134	228	361	1	6	2	12	11	3		16	26	2,104		
DAVIDSON COUNTY CC	1,105	135	156	343	1,740	241	388	629		32	8	19	3	7		5	8	2,450		
DURHAM TCC	1,841	80	141	764	2,826	411	399	809			1	5	7			20	13	3,682		
EDGEcombe CC	877	3	179	175	1,234	333	156	489			1	15	39	2		19	1	1,800		
FAYETTEVILLE TCC	4,866	112	506	465	5,948	780	1,384	2,163		320	8	86	5	1		183	6	8,722		
FORSYTH TCC	2,840	68	312	429	3,649	485	737	1,222		50	2	20	7	8		82	104	5,144		
GASTON COLLEGE	2,258	163	203	200	2,824	211	315	526		68	2	50	10	3		36	3	3,522		
GUILFORD TCC	4,579	63	136	383	5,161	507	589	1,097		55	12	48	172	4		85	138	6,771		
HALIFAX CC	938	192	94	52	1,277	150	179	330		4	7	2	9	8		26	2	1,663		
HAYWOOD CC	862	93	109	173	1,237	95	130	225	1			8	31	1		6	55	1,564		
ISOTHERMAL CC	1,025	130	252	180	1,588	133	127	260			2	17	82				101	2,049		
JAMES SPRUNT CC	518	80	203	112	913	106	70	176	5		3	5		7		30	18	1,157		
JOHNSTON CC	1,269	646	239	175	2,330	321	193	514	9	11	2	25	1	4		30	18	2,943		
LENOIR CC	1,234	144	96	201	1,675	308	359	668			12	35	4	6		35	38	2,472		
MARTIN CC	475		101	41	617	189	135	324		4	2	10		1		41	1	1,080		
MAYLAND CC	370	167	65	56	658	140	187	327		1	1	18	1	3		16	10	1,035		
MCDOWELL TCC	497	73	151	92	813	165	105	270		1	3	24	7			19	5	1,142		
MITCHELL CC	939	55	202	81	1,278	121	216	337		7		9	31	2		20	16	1,699		
MONTGOMERY CC	373	41	58	49	522	42	67	109		6	3	5	1	2		7	3	657		
NASH CC	1,004	54	69	163	1,289	222	275	496	1		2	27	23	3		32	5	1,880		
PAMLICO CC	124	90	8	7	229	114	56	169	1			13		1		17		431		
PIEDMONT CC	616	306	173	277	1,371	119	89	208		8	4	50	16	2		20		1,680		
PITT CC	2,955	176	227	403	3,760	208	234	442		20	3	25	2	2		6	20	4,281		
RANDOLPH CC	1,083	80	124	92	1,379	225	376	601		7	8	4	7	3		12	39	2,060		

TABLE 26
ANNUALIZED AVERAGE ANNUAL
FULL-TIME EQUIVALENT (FTE)

1999-00

CURRICULUM PROGRAMS						EXTENSION PROGRAMS													
COLLEGES	ASSO- CIATE DEGREE	CERTIFI- CATE	DIPLOMA	TRANSI- TIONAL	SUB TOTAL	BASIC SKILLS	OCC RB	SUB TOTAL	LEARN LAB	OCC SS	FIT	HRD	NIT/EIT	SBC	JTPA	COMM SVC	NON OCC SS	TOTAL	
RICHMOND CC	910	51	47	61	1,068	496	194	690		2	6	40	15	3		19		1,844	
ROANOKE-CHOWAN CC	501	15	139	36	691	86	47	132			1	2		5		54		886	
ROBESON CC	1,001	256	133	86	1,476	669	360	1,029		6	5	27	38	3		21	6	2,611	
ROCKINGHAM CC	934	232	144	133	1,443	90	280	370		7	4	25	16	4		28	18	1,915	
ROMAN-CABARRUS CC	1,803	350	223	283	2,658	200	454	655		7	7	42	448	2		31	1	3,851	
SAMPSON CC	679	120	79	88	966	294	157	450		2		69	8	2		34	7	1,539	
SANDHILLS CC	2,196	85	97	133	2,511	308	313	621		18	1	12	130	12		2	35	3,342	
SOUTH PIEDMONT CC	641	119	210	137	1,108	189	110	299	1	2	6	50	25	1		9	2	1,502	
SOUTHEASTERN CC	1,194	225	229	94	1,742	301	169	470		1	1	40	13	3		47	2	2,319	
SOUTHWESTERN CC	1,152	34	14	191	1,391	126	379	505		17		6	8	2		3	13	1,945	
STANLY CC	773	156	45	135	1,108	95	209	304		5	2	4	29	3		18		1,474	
SURRY CC	1,758	61	307	171	2,296	122	370	493		1	12	14		4		46	10	2,876	
TRI-COUNTY CC	640	18	117	85	860	30	104	133		4		7	11	2		34	2	1,054	
VANCE-GRANVILLE CC	1,416	62	421	606	2,505	322	482	804		1	14	27	70	2		31	10	3,464	
WAKE TCC	4,667	448	242	574	5,932	739	1,038	1,777	22	51	24	44	226	6		208	3	8,292	
WAYNE CC	1,820	57	210	164	2,252	299	432	731	7	2	4	13	12	6		57	12	3,095	
WESTERN PIEDMONT CC	1,213	92	106	172	1,584	428	235	663	2	40	7	23	10	3		50	15	2,396	
WILKES CC	1,285	65	111	109	1,570	170	379	549		60	8	17	98	1		36	6	2,345	
WILSON TCC	697	112	151	142	1,102	156	306	462		9	5	24	14	3		117	4	1,740	
TOTAL 1999-00	83,621	7,710	10,331	14,333	115,996	14,952	18,300	33,252	64	1,383	239	1,362	2,673	173		2,034	1,224	158,399	

CURRICULUM
TWO SEMESTER ANNUALIZED FTE
(RANKED BY 1999-00 ANNUAL FTE COLUMN)
FALL 1999 - SPRING 2000

TABLE 30

RANK	COLLEGES	FALL	SPRING	1999-00 ANNUAL FTE	1998-99 ANNUAL FTE	1997-98 ANNUAL FTE
1	CENTRAL PIEDMONT CC	4,289	3,768	8,057	8,231	7,677
2	FAYETTEVILLE TCC	2,983	2,965	5,948	5,635	5,291
3	WAKE TCC	3,029	2,903	5,932	5,546	4,963
4	GUILFORD TCC	2,664	2,497	5,161	5,016	4,699
5	CAPE FEAR CC	2,008	1,929	3,937	3,514	3,165
6	PITT CC	1,939	1,821	3,760	3,466	3,276
7	FORSYTH TCC	1,902	1,748	3,650	3,289	2,870
8	ASHEVILLE-BUNCOMBE TCC	1,628	1,527	3,155	3,056	2,820
9	CENTRAL CAROLINA CC	1,490	1,413	2,903	2,774	2,562
10	DURHAM TCC	1,448	1,378	2,826	2,915	2,675
11	GASTON COLLEGE	1,383	1,441	2,824	2,706	2,557
12	COASTAL CAROLINA CC	1,423	1,283	2,706	2,705	2,545
13	ROWAN-CABARRUS CC	1,408	1,251	2,659	2,572	2,307
14	SANDHILLS CC	1,278	1,233	2,511	2,324	2,148
15	VANCE-GRANVILLE CC	1,323	1,182	2,505	2,367	2,094
16	CATAWBA VALLEY CC	1,278	1,161	2,439	2,566	2,359
17	CALDWELL CC & TI	1,166	1,170	2,336	2,273	2,146
18	JOHNSTON CC	1,156	1,173	2,329	2,284	2,031
19	SURRY CC	1,190	1,107	2,297	2,181	2,085
20	WAYNE CC	1,146	1,106	2,252	2,339	2,151
21	ALAMANCE CC	1,097	1,008	2,105	2,101	1,983
22	SOUTHEASTERN CC	853	890	1,743	1,584	1,528
23	DAVIDSON COUNTY CC	891	848	1,739	1,756	1,778
24	LENOIR CC	879	796	1,675	1,752	1,552
25	CRAVEN CC	833	832	1,665	1,712	1,631
26	ISOTHERMAL CC	790	798	1,588	1,366	1,187
27	WESTERN PIEDMONT CC	830	754	1,584	1,633	1,583
28	WILKES CC	825	745	1,570	1,504	1,479
29	CLEVELAND CC	800	767	1,567	1,410	1,368
30	COLLEGE OF ALBEMARLE	800	712	1,512	1,448	1,508
31	ROBESON CC	770	706	1,476	1,425	1,323
32	ROCKINGHAM CC	750	693	1,443	1,363	1,358
33	SOUTHWESTERN CC	674	717	1,391	1,374	1,421
34	RANDOLPH CC	718	661	1,379	1,197	1,063
35	PIEDMONT CC	710	662	1,372	1,251	1,124
36	NASH CC	660	629	1,289	1,398	1,277
37	MITCHELL CC	665	613	1,278	1,234	1,180
38	HALIFAX CC	618	659	1,277	1,258	1,160
39	HAYWOOD CC	636	602	1,238	1,344	1,296
40	EDGEcombe CC	650	584	1,234	1,339	1,395
41	BLUE RIDGE CC	621	608	1,229	1,245	1,069
42	CARTERET CC	600	556	1,156	1,059	1,057
43	BEAUFORT COUNTY CC	589	559	1,148	1,194	1,103
44	SOUTH PIEDMONT CC	571	537	1,108	1,105	812
45	STANLY CC	545	563	1,108	1,270	1,205
46	WILSON TCC	583	519	1,102	1,107	1,077
47	RICHMOND CC	561	508	1,069	1,111	935
48	SAMPSON CC	525	441	966	951	791
49	JAMES SPRUNT CC	478	434	912	994	843
50	TRI-COUNTY CC	456	405	861	689	671
51	MCDOWELL TCC	435	378	813	793	808
52	BLADEN CC	418	382	800	691	675
53	BRUNSWICK CC	353	345	698	640	620
54	ROANOKE-CHOWAN CC	348	343	691	716	653
55	MAYLAND CC	299	358	657	629	556
56	MARTIN CC	307	311	618	533	582
57	MONTGOMERY CC	259	263	522	528	559
58	PAMLICO CC	120	110	230	208	118
<hr/>						
	TOTAL 1999-00	59,648	56,352	116,000	0	0
	TOTAL 1998-99	57,578	55,093		112,671	0
	TOTAL 1997-98	52,830	51,919		0	104,749